

N 38° 04' 00"

N 38° 03' 40"

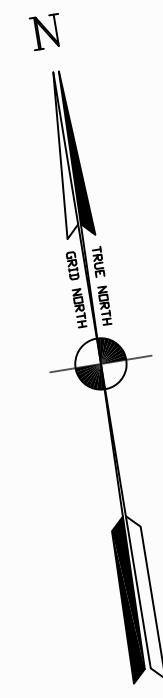
N 1786000

N 1785000

N 1784000

MATCHLINE - SHEET 6

N 1783000



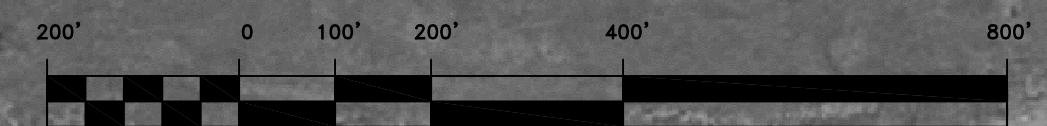
PORT CHICAGO REACH

Suisun Bay Channel Lighted Buoy 17

PIER NO. 3

PRELIMINARY ISSUE
THIS PLAN ISSUED FOR
ADVANCE INFORMATION ONLY

GRAPHICS SCALE 1" = 200'



FLOOD
EBB


US Army Corps
of Engineers
San Francisco District
1455 Market Street
San Francisco, CA 94103

Mark	Description	Date	Appr.

DESIGNED BY:	PDT	CHECKED BY:	PDT	DRAWN BY:	PDT
DATE:	05/22/2012	DATE:	05/22/2012	DATE:	05/22/2012
APPROVED:	TORREY A. DICIRO LT. COLONEL, U.S. DISTRICT ENGINEER	APPROVED:	TORREY A. DICIRO LT. COLONEL, U.S. DISTRICT ENGINEER	APPROVED:	TORREY A. DICIRO LT. COLONEL, U.S. DISTRICT ENGINEER

CALIFORNIA
CONTRA COSTA COUNTY
SUISUN BAY CHANNEL
CONDITION SURVEY
7-8, 10-11, 17 MAY 2012

Sheet
reference
number
G7