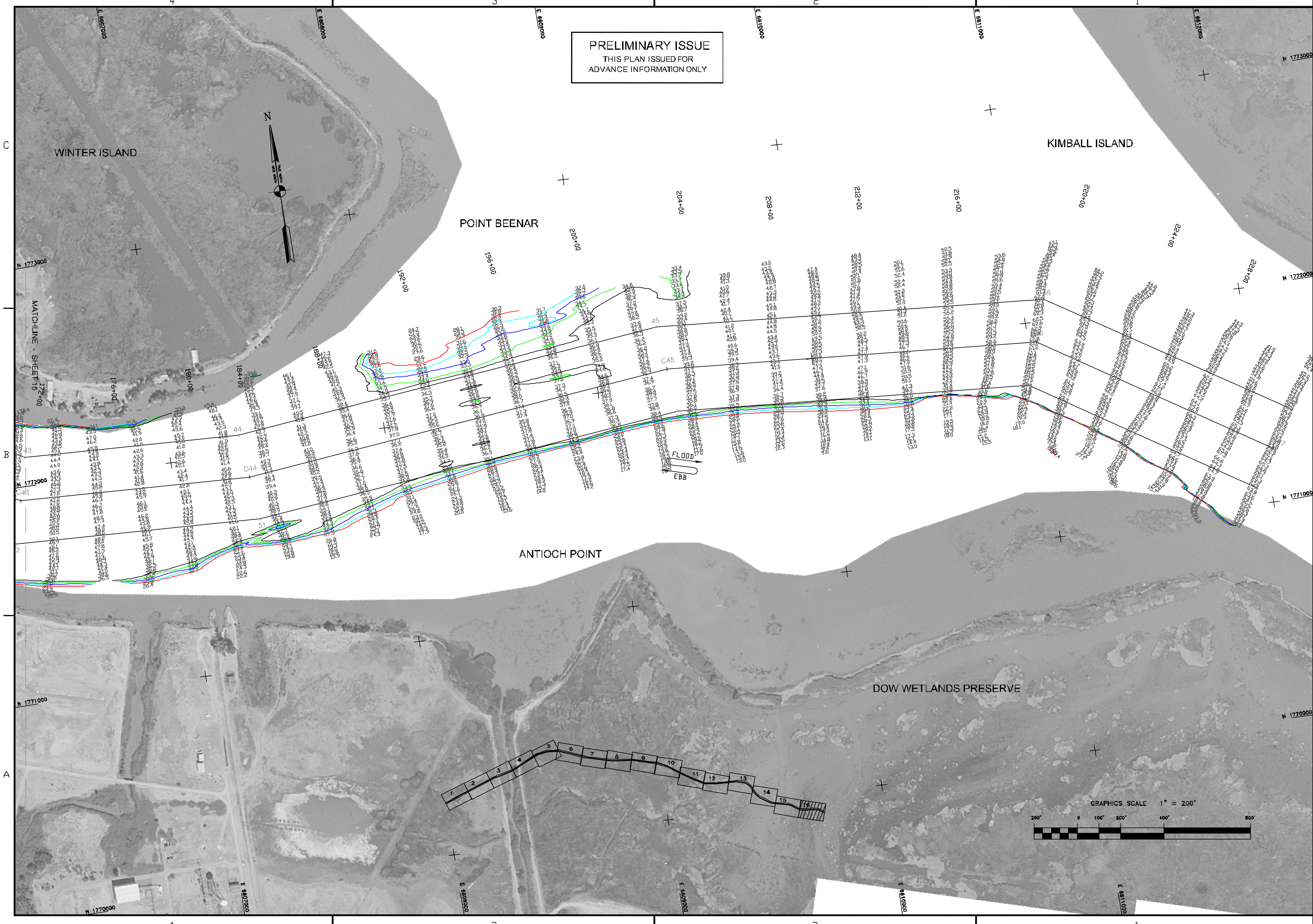



PRELIMINARY ISSUE
THIS PLAN ISSUED FOR
ADVANCE INFORMATION ONLY




US Army Corps
of Engineers
San Francisco District
1455 Market Street
San Francisco, CA 94103

Mark	Description	Date	Appr.

DESIGNED BY:	MC	CHECKED BY:	TJM	DRAWN BY:	EWK
DATE:	5/5/2008	SHEET NO.:	16 OF 16	DRAWING NO.:	2 234
APPROVAL RECOMMENDED:	DRIVER, Technical Support Section	PREPARED UNDER THE DIRECTION OF CRAIG W. KILLEY LT. COLONEL, C.E., DISTRICT ENGINEER			
APPROVED:					

CALIFORNIA
CONTRA COSTA COUNTY
NEW YORK SLOUGH
CONDITION SURVEY
16-17 APRIL 2008

Sheet
reference
number
C16