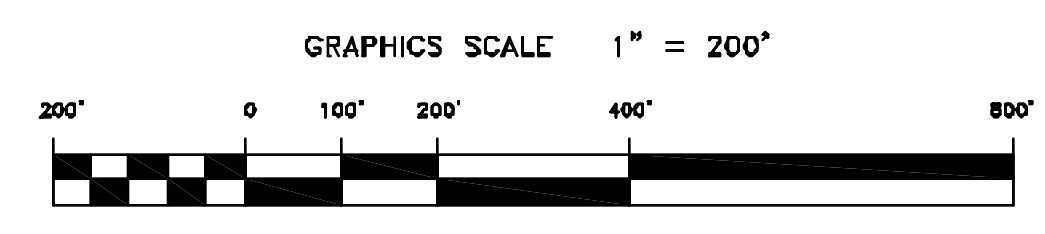
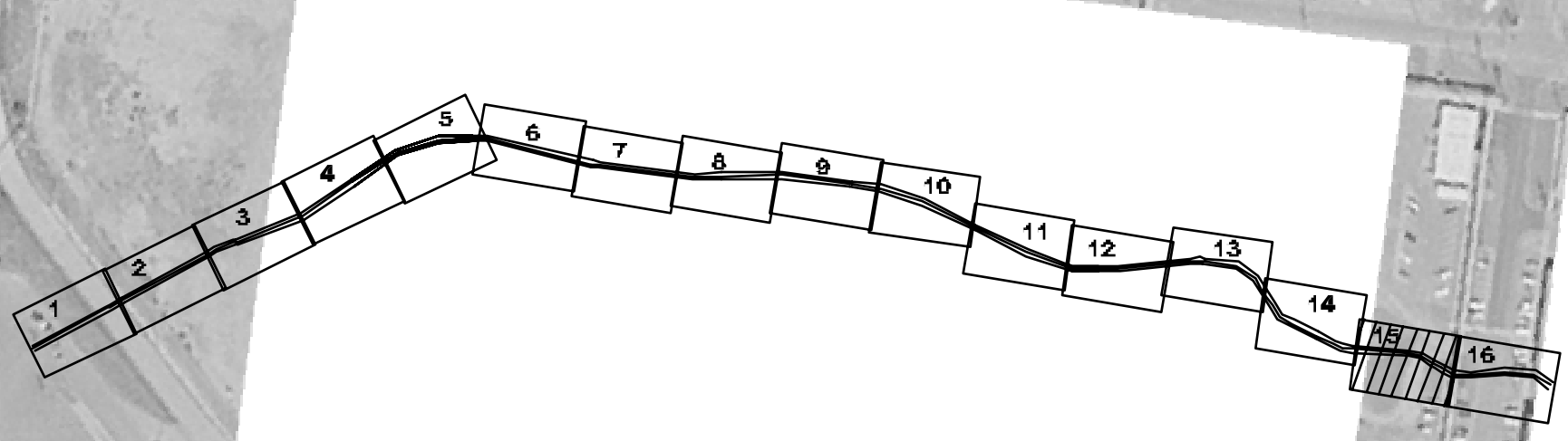
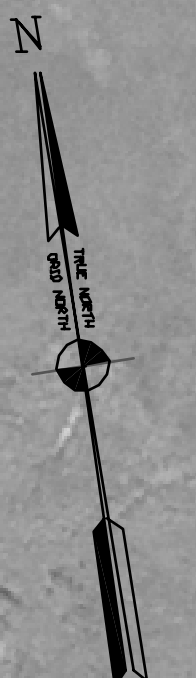



PRELIMINARY ISSUE
THIS PLAN ISSUED FOR
ADVANCE INFORMATION ONLY




 US Army Corps
of Engineers
San Francisco District
1455 Market Street
San Francisco, CA 94103

Mark	Description	Date	Appr.

SUBMITTED: MC CIVIL ENGINEER APPROVAL RECOMMENDED: CIVIL ENGINEER APPROVED: CIVIL ENGINEER	DESIGNED BY: TVW DRAWING NO.: 15 OF 16 DATE: 5/5/2008	CHECKED BY: DRAWN BY: DATE: 5/5/2008 PREPARED UNDER THE DIRECTION OF CRAIG W. KILEY LT. COLONEL, C.E., DISTRICT ENGINEER
--	--	--

CALIFORNIA
 CONTRA COSTA COUNTY
 NEW YORK SLOUGH
 CONDITION SURVEY
 16-17 APRIL 2008

Sheet
reference
number
C15

MATCHLINE - SHEET 16

MATCHLINE - SHEET 14

N 1775000
E 6801000
N 1774000
N 1772000
N 1771000

E 6803000
E 6804000
E 6805000
E 6806000
E 6807000
E 6808000
E 6809000
E 6810000

BROWNS ISLAND

WINTER ISLAND

112+00
116+00
120+00
124+00
128+00
132+00
136+00
140+00
144+00
148+00
152+00
156+00
160+00
164+00

+

+

+

+

+

+

+

+

+

+

+

+

+

+

+

+

+

+

+

+

+

+

+

+

+

+

+

+

+

+

+

+

+

+

+

+

+

+

+

+

+

+

+

+