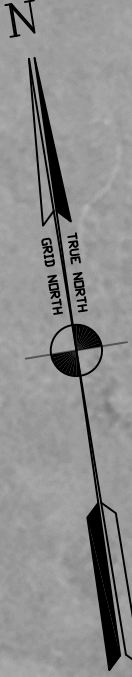


W 121° 53' 00"
W 121° 52' 40"
W 121° 52' 20"
W 121° 52' 00"



US Army Corps of Engineers
San Francisco District
1455 Market Street
San Francisco, CA 94103

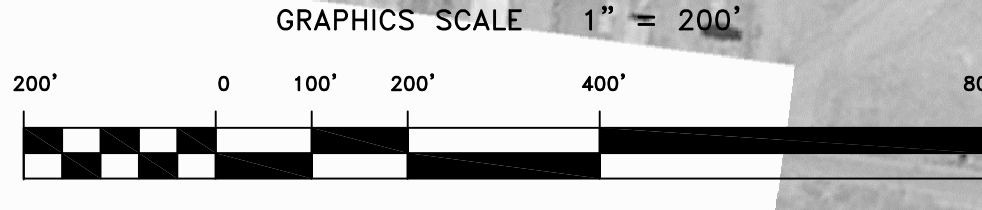
Mark	Description	Date	Appr.

SUBMITTED BY: Survey Section Team Leader	PDT	SHEET NO.	DRAWING NO.	DRAWN BY:	PDT
APPROVAL RECOMMENDER: Chief, Hydro Survey Section			PREPARED UNDER THE DIRECTION OF JOHN K. BAKER		
APPROVED:			LT. COLONEL, C.E., DISTRICT ENGINEER		

CALIFORNIA
CONTRA COSTA COUNTY
NEW YORK SLOUGH
POSTDRIDGE SURVEY
21-22 AUGUST 2013

Sheet reference number
C14

PRELIMINARY ISSUE
THIS PLAN ISSUED FOR
ADVANCE INFORMATION ONLY



MATCHLINE - SHEET 13

MATCHLINE - SHEET 15

POINT EMMET

BROWNS ISLAND

PITTSBURG MARINA