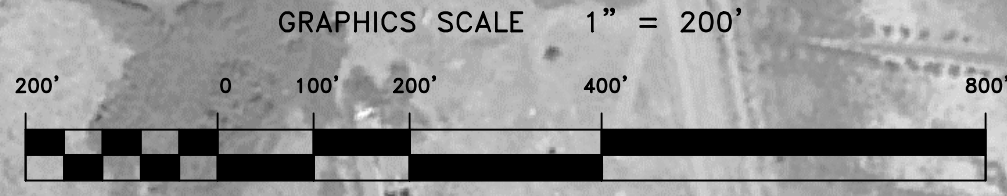
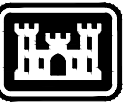


PRELIMINARY ISSUE
THIS PLAN ISSUED FOR
ADVANCE INFORMATION ONLY




US Army Corps
of Engineers
San Francisco District
1455 Market Street
San Francisco, CA 94103

Mark	Description	Date	Appr.

DESIGNED BY:	PDT	CHECKED BY:	PDT	DRAWN BY:	PDT
DATE:	8/2/2013	DATE:	8/2/2013	DATE:	8/2/2013
APPROVAL RECOMMENDED:	CHIEF, Hydro Survey Station	APPROVAL RECOMMENDED:	CHIEF, Construction Branch	APPROVAL RECOMMENDED:	CHIEF, Construction Branch
APPROVED:	JOHN K. BAKER	APPROVED:	LT. COLONEL, C.E., DISTRICT ENGINEER	APPROVED:	JOHN K. BAKER
PREPARED UNDER THE DIRECTION OF			PREPARED UNDER THE DIRECTION OF		
SHEET NO. 16 OF 16			SHEET NO. 4 OF 4		
DRAWING NO. 2			DRAWING NO. 2		
PDT 218			PDT 218		

CALIFORNIA
CONTRA COSTA COUNTY
NEW YORK SLOUGH
CONDITION SURVEY
22-23, 30 JULY 2013
01 AUGUST 2013

Sheet
reference
number
C16