

US Army Corps  
of Engineers  
San Francisco District  
1455 Market Street  
San Francisco, CA 94103

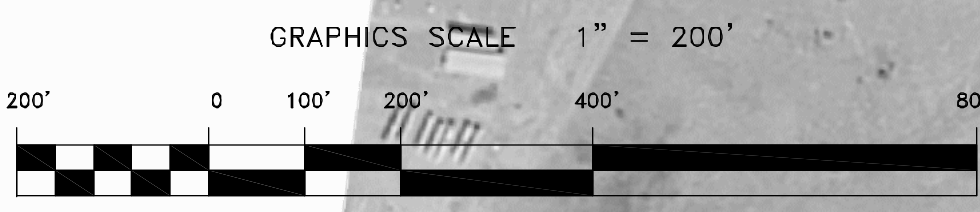
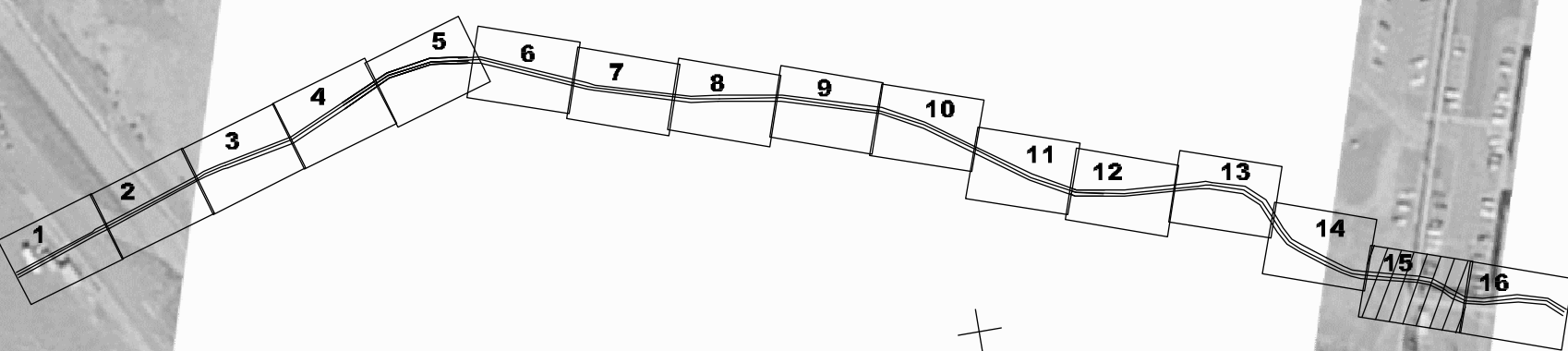
APP#	DATE	DESCRIPTION	MARK

APP#	DATE	DESCRIPTION	MARK

<b>SUBMITTED:</b>	<b>DESIGNED BY:</b>	<b>CHECKED BY:</b>	<b>DRAWN BY:</b>
Survey Section Team Leader			
<b>APPROVAL RECOMMENDED:</b>	<b>DATE:</b> 12/11/2008	<b>SHEET NO.:</b> 15 OF 16	<b>DRAWING NO.:</b> 238
Chief, Technical Support Section	PREPARED UNDER THE DIRECTION OF		
<b>APPROVED:</b>	LAURENCE M. FARRELL		
	LT. COLONEL, C.E., DISTRICT ENGINEER		

CALIFORNIA  
CONTRA COSTA COUNTY  
NEW YORK SLOUGH  
COMPOSITE CONDITION SURVEY  
18 & 19 DECEMBER 2008  
09 & 11 JANUARY 2009

Sheet  
reference  
number  
**C15**



PRELIMINARY ISSUE  
THIS PLAN IS ISSUED FOR  
ADVANCE INFORMATION ONLY