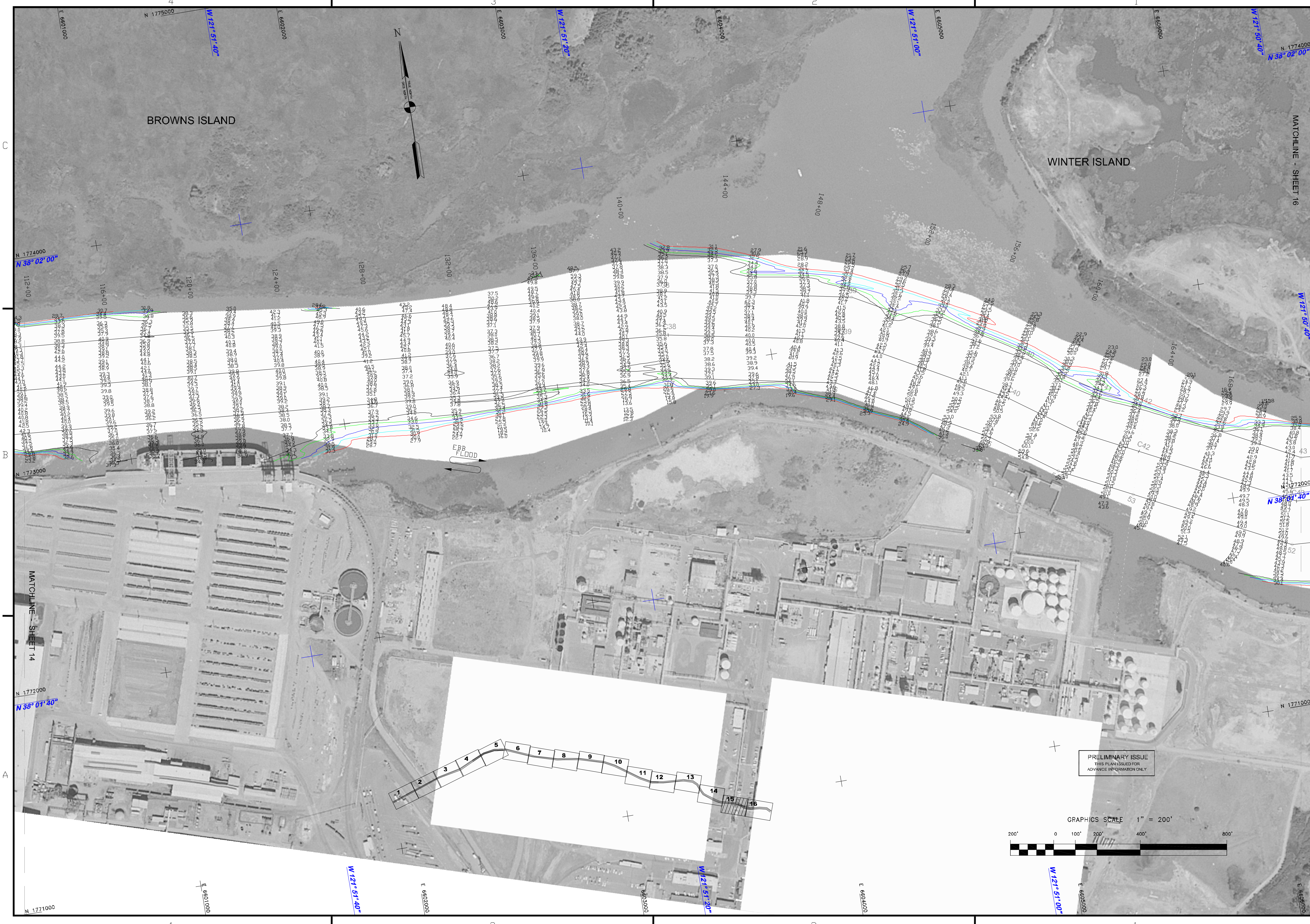


Mark	Description	Date	Appr.

SUBMITTED:	PDT	CHECKED BY:	DRAWN BY:
Survey Section Team Leader	PDT	PDT	PDT
APPROVAL RECOMMENDED:	SHEET NO.	DATE:	DRAWING NO.
CHIEF, Water Survey Section	04/17/2013	15 OF 16	4 2
APPROVED:	PREPARED UNDER THE DIRECTION OF		
CHIEF, Construction Branch	JOHN K. BAKER		
	LT. COLONEL, C.E., DISTRICT ENGINEER		

CONTRA COSTA COUNTY  
 CALIFORNIA  
**NEW YORK SLOUGH**  
 CONDITION SURVEY  
 08 APRIL 2013

Sheet  
 reference  
 number  
**C15**



PRELIMINARY ISSUE  
 THIS PLAN ISSUED FOR  
 ADVANCE INFORMATION ONLY

