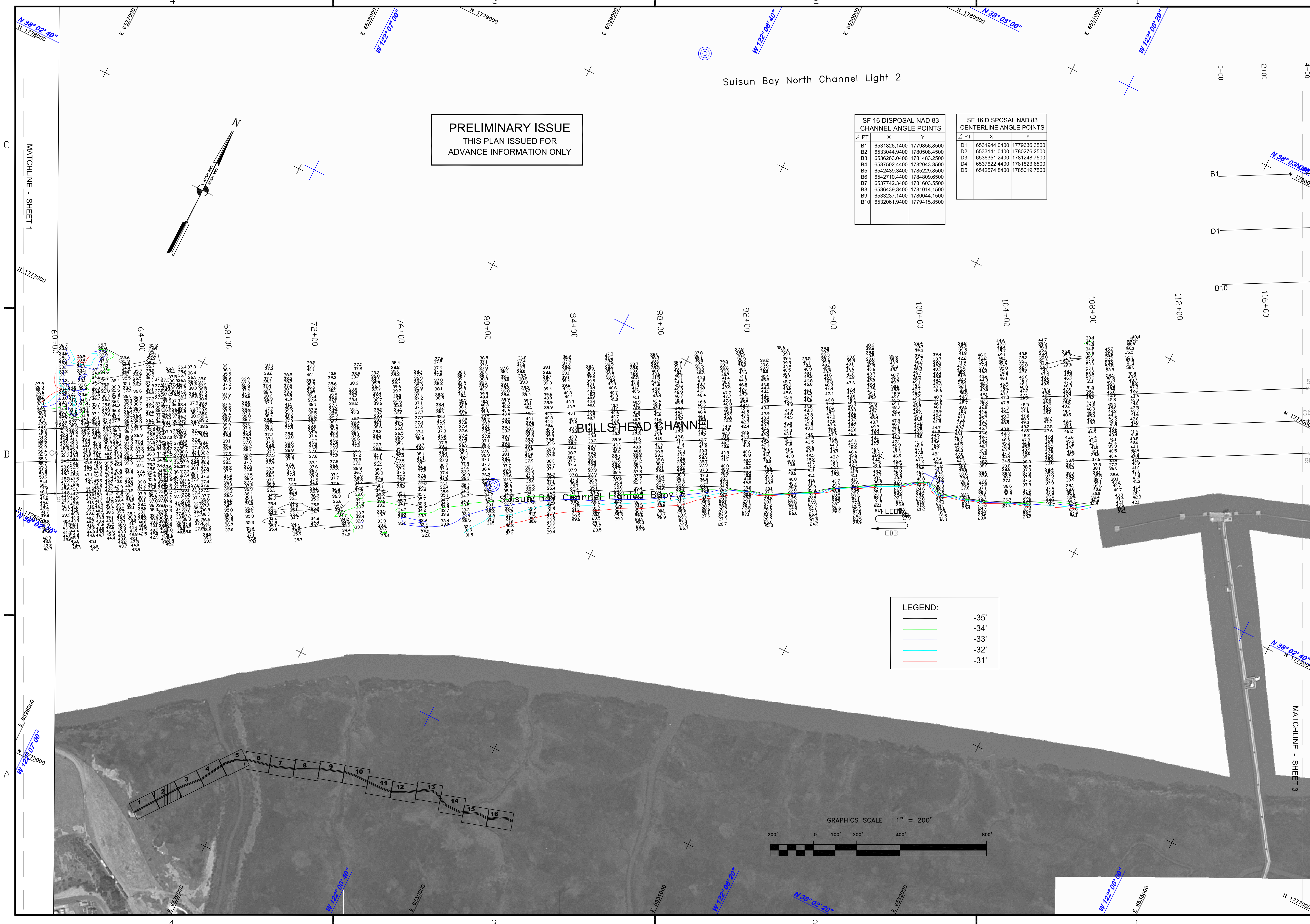
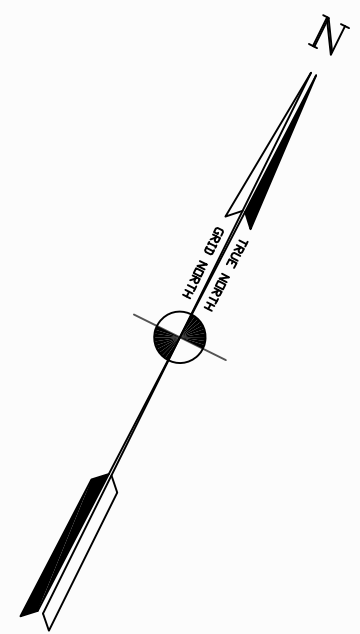


Suisun Bay North Channel Light 2

PRELIMINARY ISSUE
THIS PLAN ISSUED FOR
ADVANCE INFORMATION ONLY

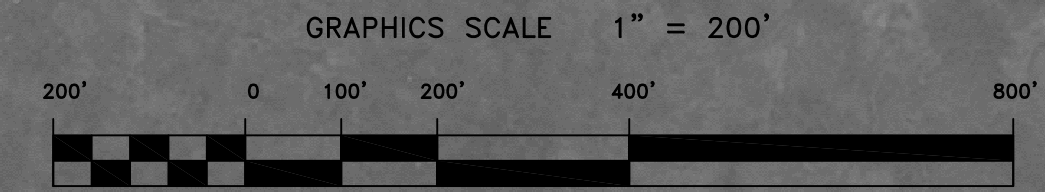
SF 16 DISPOSAL NAD 83 CHANNEL ANGLE POINTS			
∠ PT	X	Y	
B1	6531826.1400	1779856.8500	
B2	6533044.9400	1780508.4500	
B3	6536263.0400	1781483.2500	
B4	6537502.4400	1782043.8500	
B5	6542439.3400	1785229.8500	
B6	6542710.4400	1784809.6500	
B7	6537742.3400	1781603.5500	
B8	6536439.3400	1781014.1500	
B9	6533237.1400	1780044.1500	
B10	6532061.9400	1779415.8500	

SF 16 DISPOSAL NAD 83 CENTERLINE ANGLE POINTS			
∠ PT	X	Y	
D1	6531844.0400	1779836.3500	
D2	6533141.0400	1780276.2500	
D3	6536351.2400	1781248.7500	
D4	6537622.4400	1781823.6500	
D5	6542574.8400	1785019.7500	



LEGEND:

—	-35'
—	-34'
—	-33'
—	-32'
—	-31'



Mark	Description	Date	Appr.

DESIGNED BY:	PDT	CHECKED BY:	PDT	DRAWN BY:	PDT
DATE:	11/14/2011	DATE:	11/14/2011	DATE:	11/14/2011
APPROVAL RECOMMENDED:	CHIEF, Geomatics Section	APPROVED:	TORREY A. DICIRO	APPROVED:	LT. COLONEL, C.E., DISTRICT ENGINEER
PREPARED UNDER THE DIRECTION OF:	TORREY A. DICIRO				

CALIFORNIA
CONTRA COSTA COUNTY
SUISUN BAY BULLS HEAD CHANNEL
CONDITION SURVEY
14 NOVEMBER 2011

Sheet reference number
G2