

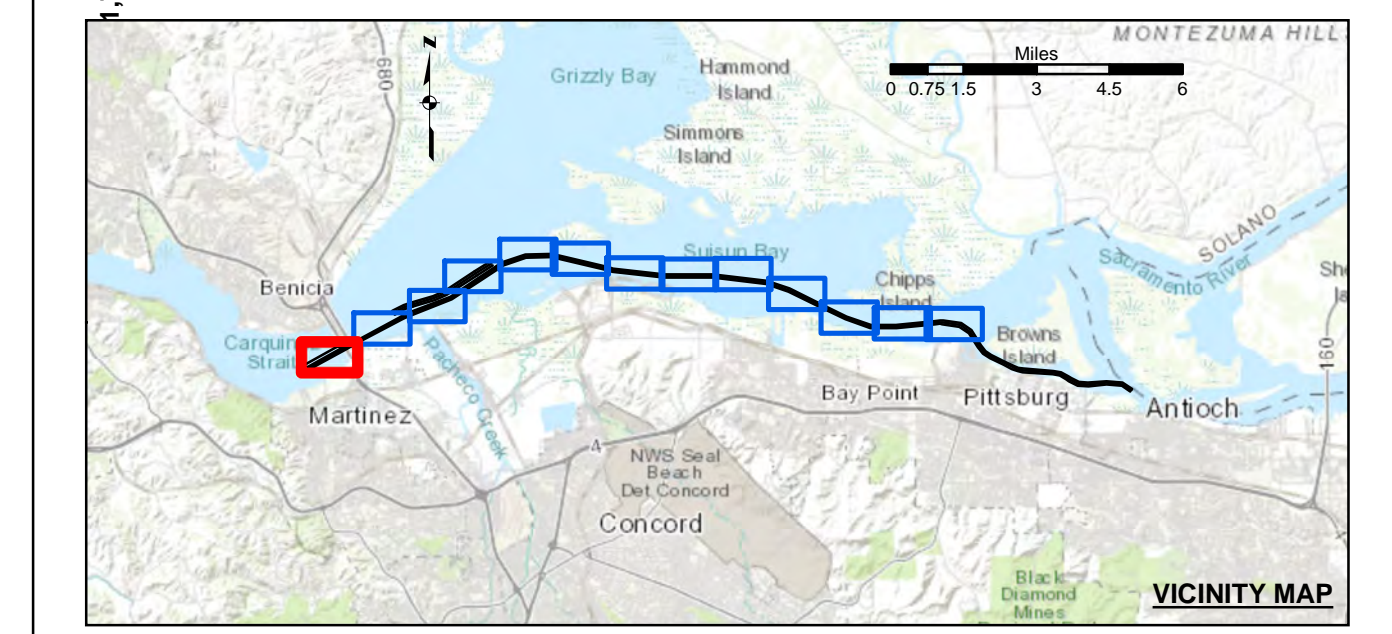
US Army Corps of Engineers
San Francisco District
450 Golden Gate Ave
San Francisco, CA 94102

DISCLAIMER
The United States Government furnishes this information as a service to the public and does not warrant, express or implied, the accuracy, completeness, reliability, usability or suitability for any particular purpose of the information. The user is responsible for the results of any application of the data for other than the intended purpose. These data belong to the Government. Therefore the recipient may not transfer or disseminate these data to others without also transferring this disclaimer.

Prepared Under the Direction of	Chart Date:
KEVIN P. ARNETT	May 31, 2023
Submitted by	Designed by:
Hydro Survey Team Leader	PDT
Recommended by	Checked by:
Chief, Hydro Survey Section	PDT
Approved by	Drawn by:
Chief, Construction Branch	PDT

CALIFORNIA
CONTRA COSTA COUNTY
SUISUN BAY CHANNEL
CONDITION SURVEY
3, 10 & 25 MAY 2023

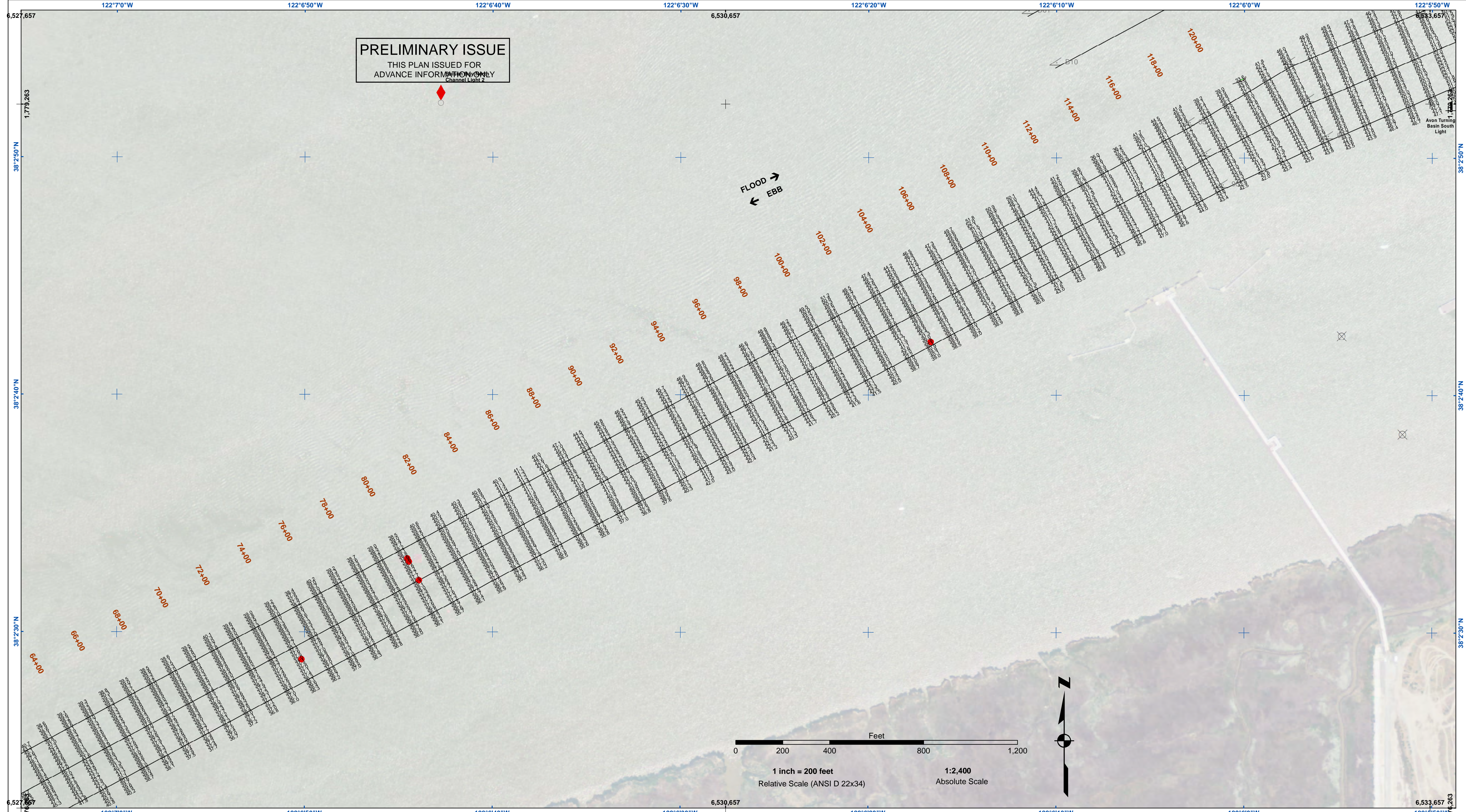
Sheet Reference Number
1 of 13



- | | | |
|----------------------------|--------------------|-----------------|
| Federal Navigation Channel | Beacon, General | Contours |
| Shoaling Area | Obstruction Point | |
| Placement Area | Navigation Buoy | |
| Anchorage Area | Navigation Buoy | |
| Wreck Area | Shoalest Sounding* | |
| Submerged Wreck | | -35 |
| Angle Point | | -34 |
| | | -33 |
| | | -32 |
| | | -31 |

NOTES:
HORIZONTAL COORDINATE SYSTEM: NORTH AMERICAN DATUM OF 1983 (NAD83), PROJECTED TO THE STATE PLANE COORDINATE SYSTEM (SPCS), CALIFORNIA ZONE II. DISTANCE UNITS IN U.S. SURVEY FEET.
VERTICAL DATUM: SOUNDINGS ARE SHOWN IN FEET AND INDICATE DEPTHS BELOW MEAN LOWER LOW WATER.
THE INFORMATION DEPICTED ON THIS MAP REPRESENTS THE RESULTS OF A SURVEY CONDUCTED ON THE DATE INDICATED AND CAN ONLY BE CONSIDERED TO REPRESENT THE GENERAL CONDITION EXISTING AT THAT TIME.
PLANE GRID, BEARING AND COORDINATES ARE BASED ON THE STATE OF CALIFORNIA COORDINATE SYSTEM, LAMBERT CONFORMAL PROJECTION, ZONE II NAD 83, CALIFORNIA, AS DESCRIBED IN SPECIAL PUBLICATION NO. 235, PUBLISHED BY NATIONAL OCEAN SURVEY.
BASE MAPS ARE USDA NAIP 2010.
*SHOALEST SOUNDING PER QUARTER PER REACH
DRAWING NOT TO BE USED FOR NAVIGATION, ONLY CHANNEL CONDITION AT DATE OF SURVEY.
THE LOCATION OF ALL NAVIGATION AIDS ARE BASED ON INFORMATION PROVIDED BY THE U.S. COAST GUARD. BUOY LOCATIONS REPRESENT THE POSITION OF THE SINKER ONLY.

SURVEYED BY THE CORPS OF ENGINEERS.
SOUNDING FOR THE CHANNEL MEASURED WITH MULTIBEAM ECHOSOUNDER AND ARE SHOWN TO THE NEAREST TENTH FOOT.
SOUNDINGS ARE BASED ON THE DATUM OF MEAN LOWER LOW WATER AT THE LOCALITY.
THE PROJECT DEPTH IS 35 FEET.
VERTICAL CONTROL: SUISUN BAY CHANNEL (LINES 04-00 TO 66-00) BENCHMARK "9" (1948), USC&GS DISK ELEV 14.875 FT MLLW, TIDE GAUGE LOCATED AT PORT OF BENICIA DOCK. (LINES 150+00 TO 500+00) BENCHMARK "5144-P" (1990 RESET 1997), USC&GS DISK ELEV 21.76 FT MLLW. TIDE GAUGE LOCATED AT CONCORD NAVAL WEAPONS STATION TUG DOCK, NOAA STATION. (LINES 660+00 TO 733+45) BENCHMARK "5098-B", USC&GS DISK ELEV 21.76 FT MLLW. TIDE GAUGE LOCATED AT DIABLO SERVICE DOCK.
HORIZONTAL GPS CONTROL: COAST GUARD D-BEACON



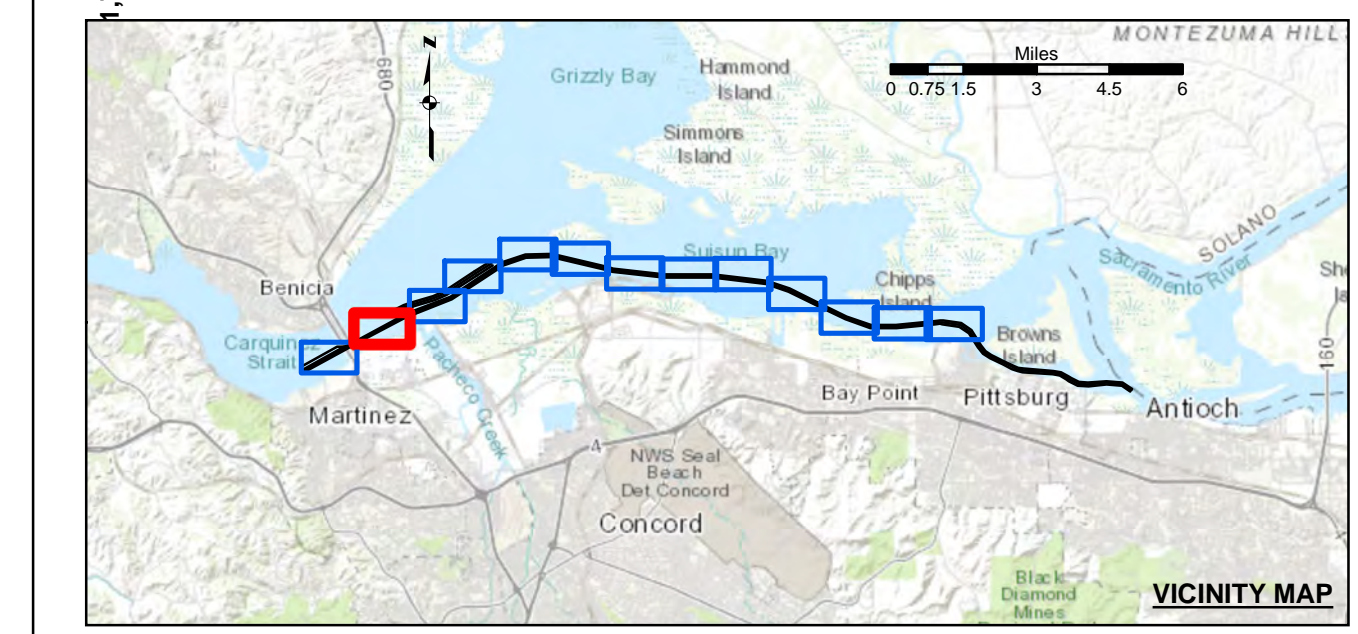
US Army Corps of Engineers
San Francisco District
450 Golden Gate Ave
San Francisco, CA 94102

DISCLAIMER
The United States Government furnishes this information as a service to the public and does not warrant the accuracy, completeness, or reliability of the information. The user is responsible for the results of any application of the data for other than its intended purpose. The user is responsible for the results of any application of the data for other than its intended purpose. The user is responsible for the results of any application of the data for other than its intended purpose.

Chart Date:	May 31, 2023
Surveyed By:	LT COLONEL K. P. ARNETT
Plotted By:	PDT
Designed By:	PDT
Checked By:	PDT
Drawn by:	PDT

CALIFORNIA
CONTRA COSTA COUNTY
SUISUN BAY CHANNEL
CONDITION SURVEY
3, 10 & 25 MAY 2023

Sheet Reference Number
2 of 13



- Federal Navigation Channel
 - Shoaling Area
 - Placement Area
 - Anchorage Area
 - Wreck Area
 - Submerged Wreck
 - Angle Point
 - Beacon, General
 - Obstruction Point
 - Navigation Buoy
 - Navigation Buoy
 - Shoalest Sounding*
- Contours**
- 35
 - 34
 - 33
 - 32
 - 31

NOTES:

HORIZONTAL COORDINATE SYSTEM:
NORTH AMERICAN DATUM OF 1983 (NAD83), PROJECTED TO THE STATE PLANE COORDINATE SYSTEM (SPCS), CALIFORNIA ZONE II. DISTANCE UNITS IN U.S. SURVEY FEET.

VERTICAL DATUM:
SOUNDINGS ARE SHOWN IN FEET AND INDICATE DEPTHS BELOW MEAN LOWER LOW WATER.

THE INFORMATION DEPICTED ON THIS MAP REPRESENTS THE RESULTS OF A SURVEY CONDUCTED ON THE DATE INDICATED AND CAN ONLY BE CONSIDERED TO REPRESENT THE GENERAL CONDITION EXISTING AT THAT TIME.

PLANE GRID, BEARING AND COORDINATES ARE BASED ON THE STATE OF CALIFORNIA COORDINATE SYSTEM, LAMBERT CONFORMAL PROJECTION, ZONE II NAD 83, CALIFORNIA, AS DESCRIBED IN SPECIAL PUBLICATION NO. 235, PUBLISHED BY NATIONAL OCEAN SURVEY.

BASE MAPS ARE USDA NAIP 2010.

*SHOALEST SOUNDING PER QUARTER PER REACH

DRAWING NOT TO BE USED FOR NAVIGATION, ONLY CHANNEL CONDITION AT DATE OF SURVEY. THE LOCATION OF ALL NAVIGATION AIDS ARE BASED ON INFORMATION PROVIDED BY THE U.S. COAST GUARD. BUOY LOCATIONS REPRESENT THE POSITION OF THE SINKER ONLY.

SURVEYED BY THE CORPS OF ENGINEERS.

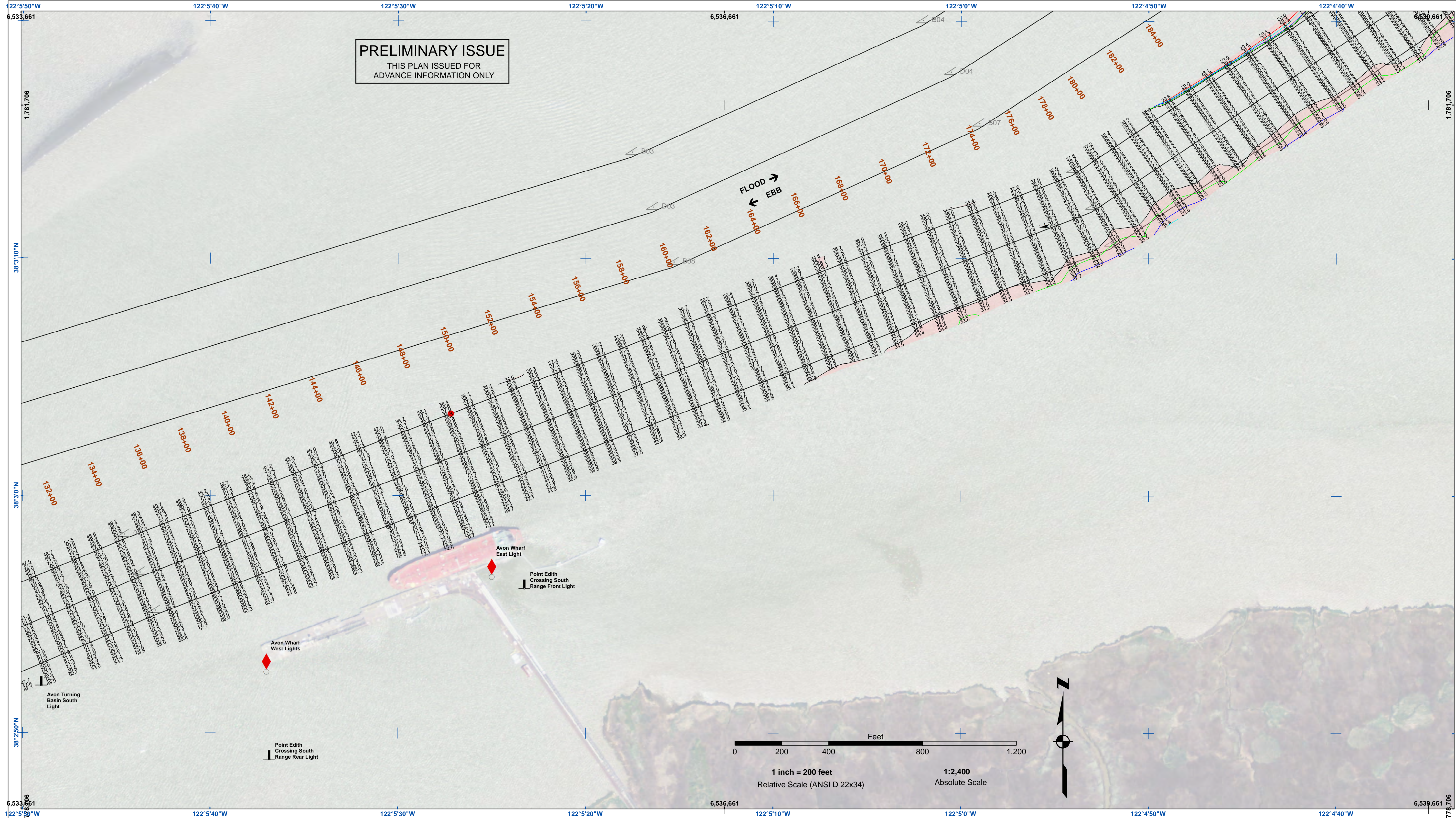
SOUNDING FOR THE CHANNEL MEASURED WITH MULTIBEAM ECHOSOUNDER AND ARE SHOWN TO THE NEAREST TENTH FOOT

SOUNDINGS ARE BASED ON THE DATUM OF MEAN LOWER LOW WATER AT THE LOCALITY.

THE PROJECT DEPTH IS 35 FEET.

VERTICAL CONTROL:
SUISUN BAY CHANNEL
(LINES 00+00 TO 660+00) BENCHMARK "5144-P" (1948), USC&GS DISK ELEV 14.875 FT MLLW.
TIDE GAUGE LOCATED AT PORT OF BENICIA DOCK.
(LINES 660+00 TO 734+45) BENCHMARK "5144-P" (1990 RESET 1997), USC&GS DISK ELEV 21.76 FT MLLW.
TIDE GAUGE LOCATED AT CONCORD NAVAL WEAPONS STATION TUG DOCK, NOAA STATION.
(LINES 734+45 TO 734+45) BENCHMARK "5096-B", USC&GS DISK ELEV 21.76 FT MLLW.
TIDE GAUGE LOCATED AT DIABLO SERVICE DOCK.

HORIZONTAL GPS CONTROL: COAST GUARD D-BEACON



PRELIMINARY ISSUE
THIS PLAN ISSUED FOR
ADVANCE INFORMATION ONLY

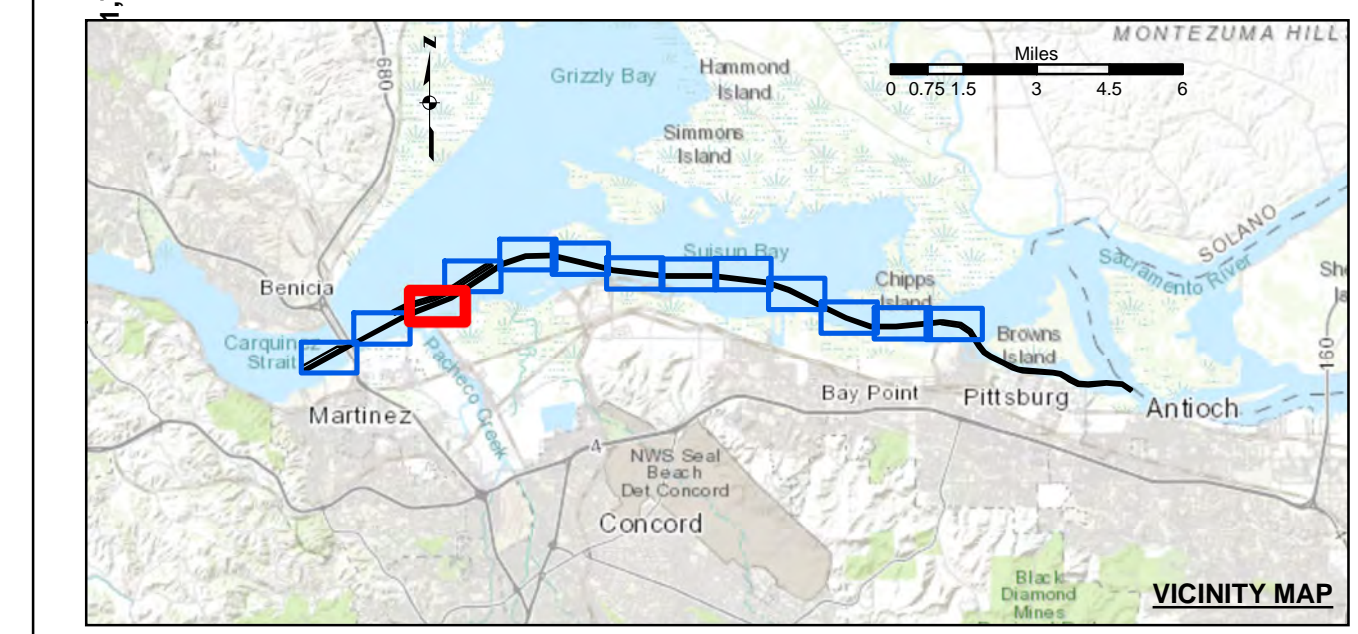
US Army Corps of Engineers
San Francisco District
450 Golden Gate Ave
San Francisco, CA 94102

DISCLAIMER
The United States Government furnishes this information as a service to the public and does not warrant, express or implied, the accuracy, completeness, or reliability of the information for any particular purpose. The user is responsible for the results of any application of the data for other than its intended purpose. These data belong to the Government. Therefore, the user may not reproduce or disseminate these data to others without also transferring this disclaimer.

Chart Date:	May 31, 2023
Surveyed By:	KEVIN P. ARNETT
Plotted By:	PDT
Designed By:	PDT
Checked By:	PDT
Drawn by:	PDT

CALIFORNIA
CONTRA COSTA COUNTY
SUISUN BAY CHANNEL
CONDITION SURVEY
3, 10 & 25 MAY 2023

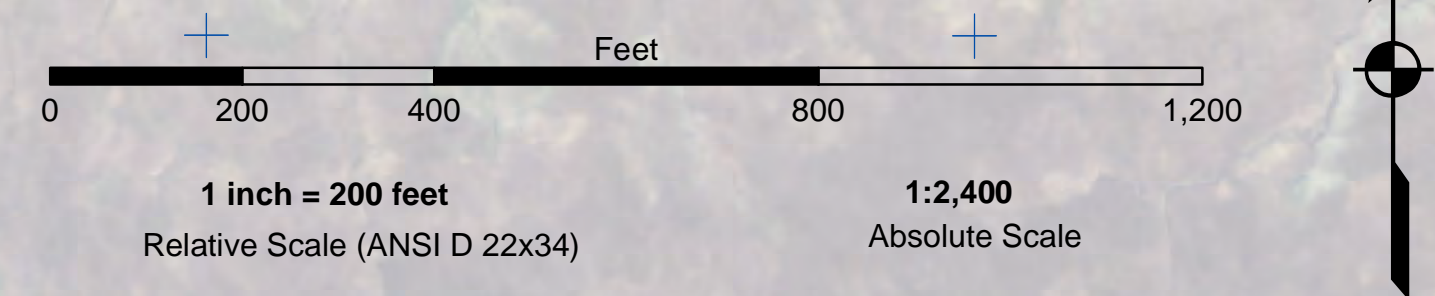
Sheet Reference Number
3 of 13

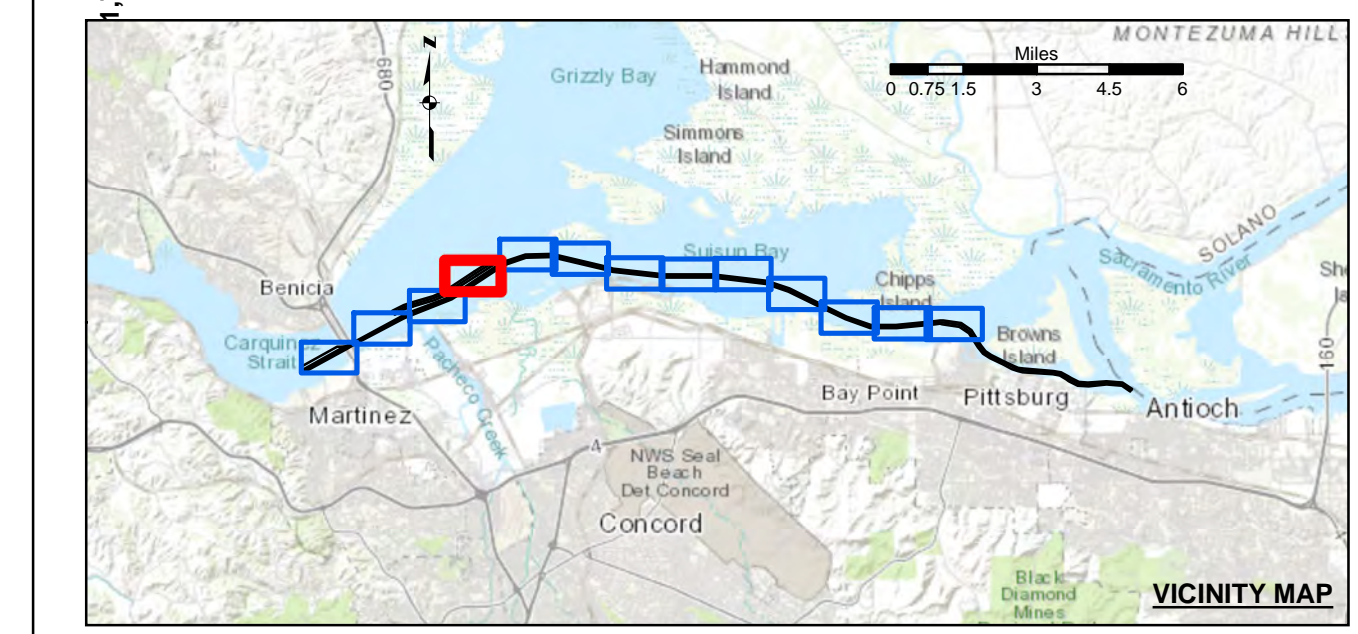
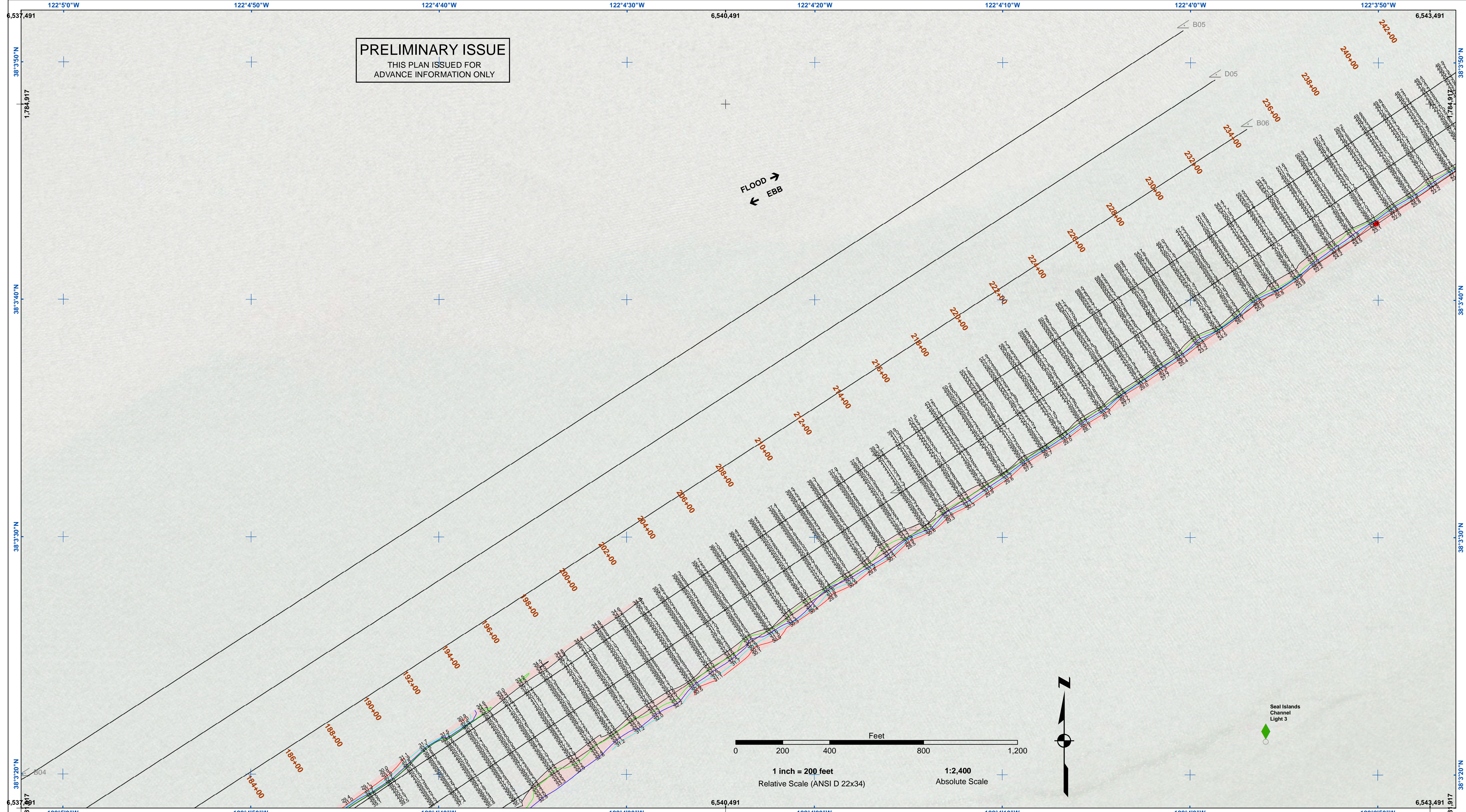


Federal Navigation Channel	Beacon, General	Contours
Shoaling Area	Obstruction Point	
Placement Area	Navigation Buoy	-35
Anchorage Area	Navigation Buoy	-34
Wreck Area	Shoalest Sounding*	-33
Submerged Wreck		-32
Angle Point		-31

NOTES:
HORIZONTAL COORDINATE SYSTEM: NORTH AMERICAN DATUM OF 1983 (NAD83), PROJECTED TO THE STATE PLANE COORDINATE SYSTEM (SPCS), CALIFORNIA ZONE II. DISTANCE UNITS IN U.S. SURVEY FEET.
VERTICAL DATUM: SOUNDINGS ARE SHOWN IN FEET AND INDICATE DEPTHS BELOW MEAN LOWER LOW WATER.
THE INFORMATION DEPICTED ON THIS MAP REPRESENTS THE RESULTS OF A SURVEY CONDUCTED ON THE DATE INDICATED AND CAN ONLY BE CONSIDERED TO REPRESENT THE GENERAL CONDITION EXISTING AT THAT TIME.
PLANE GRID, BEARING AND COORDINATES ARE BASED ON THE STATE OF CALIFORNIA COORDINATE SYSTEM, LAMBERT CONFORMAL PROJECTION, ZONE II NAD 83, CALIFORNIA, AS DESCRIBED IN SPECIAL PUBLICATION NO. 235, PUBLISHED BY NATIONAL OCEAN SURVEY. BASE MAPS ARE USDA NAIP 2010.
*SHOALEST SOUNDING PER QUARTER PER REACH
DRAWING NOT TO BE USED FOR NAVIGATION, ONLY CHANNEL CONDITION AT DATE OF SURVEY. THE LOCATION OF ALL NAVIGATION AIDS ARE BASED ON INFORMATION PROVIDED BY THE U.S. COAST GUARD. BUOY LOCATIONS REPRESENT THE POSITION OF THE SINKER ONLY.

SURVEYED BY THE CORPS OF ENGINEERS.
SOUNDING FOR THE CHANNEL MEASURED WITH MULTIBEAM ECHOSOUNDER AND ARE SHOWN TO THE NEAREST TENTH FOOT.
SOUNDINGS ARE BASED ON THE DATUM OF MEAN LOWER LOW WATER AT THE LOCALITY.
THE PROJECT DEPTH IS 35 FEET.
VERTICAL CONTROL: SUISUN BAY CHANNEL (LINES 00+00 TO 160+00) BENCHMARK "9" (1948), USC&GS DISK ELEV 14.875 FT MLLW, TIDE GAUGE LOCATED AT PORT OF BENICIA DOCK. (LINES 150+00 TO 500+00) BENCHMARK "5144-P" (1990 RESET 1997), (LINES 500+00 TO 660+00) BENCHMARK "5144-P" (1990 RESET 1997), USC&GS DISK ELEV 11.83 FT MLLW, TIDE GAUGE LOCATED AT CONCORD NAVAL WEAPONS STATION TUG DOCK, NOAA STATION. (LINES 660+00 TO 733+45) BENCHMARK "5096-B", USC&GS DISK ELEV 21.76 FT MLLW, TIDE GAUGE LOCATED AT DIABLO SERVICE DOCK.
HORIZONTAL GPS CONTROL: COAST GUARD D-BEACON





	Federal Navigation Channel		Beacon, General	Contours	
	Shoaling Area		Obstruction Point		
	Placement Area		Navigation Buoy		
	Anchorage Area		Navigation Buoy		
	Wreck Area		Shoalest Sounding*		
	Submerged Wreck				-35
	Angle Point				-34
					-33
					-32
					-31

NOTES:

HORIZONTAL COORDINATE SYSTEM:
NORTH AMERICAN DATUM OF 1983 (NAD83), PROJECTED TO THE STATE PLANE COORDINATE SYSTEM (SPCS), CALIFORNIA ZONE II. DISTANCE UNITS IN U.S. SURVEY FEET.

VERTICAL DATUM:
SOUNDINGS ARE SHOWN IN FEET AND INDICATE DEPTHS BELOW MEAN LOWER LOW WATER.

THE INFORMATION DEPICTED ON THIS MAP REPRESENTS THE RESULTS OF A SURVEY CONDUCTED ON THE DATE INDICATED AND CAN ONLY BE CONSIDERED TO REPRESENT THE GENERAL CONDITION EXISTING AT THAT TIME.

PLANE GRID, BEARING AND COORDINATES ARE BASED ON THE STATE OF CALIFORNIA COORDINATE SYSTEM, LAMBERT CONFORMAL PROJECTION, ZONE II NAD 83, CALIFORNIA, AS DESCRIBED IN SPECIAL PUBLICATION NO. 235, PUBLISHED BY NATIONAL OCEAN SURVEY.

BASE MAPS ARE USDA NAIP 2010.

*SHOALEST SOUNDING PER QUARTER PER REACH

DRAWING NOT TO BE USED FOR NAVIGATION, ONLY CHANNEL CONDITION AT DATE OF SURVEY.

THE LOCATION OF ALL NAVIGATION AIDS ARE BASED ON INFORMATION PROVIDED BY THE U.S. COAST GUARD. BUOY LOCATIONS REPRESENT THE POSITION OF THE SINKER ONLY.

SURVEYED BY THE CORPS OF ENGINEERS.

SOUNDING FOR THE CHANNEL MEASURED WITH MULTIBEAM ECHOSOUNDER AND ARE SHOWN TO THE NEAREST TENTH FOOT

SOUNDINGS ARE BASED ON THE DATUM OF MEAN LOWER LOW WATER AT THE LOCALITY.

THE PROJECT DEPTH IS 35 FEET.

VERTICAL CONTROL:
SUISUN BAY CHANNEL
(LINES 00+00 TO 160+00) BENCHMARK "9" (1948), USC&GS DISK ELEV 14.875 FT MLLW.
TIDE GAUGE LOCATED AT PORT OF BENICIA DOCK.

(LINES 150+00 TO 500+00) BENCHMARK "5144-P" (1990 RESET 1997), (LINES 500+00 TO 660+00) BENCHMARK "5144-P" (1990 RESET 1997), USC&GS DISK ELEV 11.83 FT MLLW.
TIDE GAUGE LOCATED AT CONCORD NAVAL WEAPONS STATION TUG DOCK, NOAA STATION.

(LINES 660+00 TO 734+45) BENCHMARK "5098-B", USC&GS DISK ELEV 21.76 FT MLLW.
TIDE GAUGE LOCATED AT DIABLO SERVICE DOCK.

HORIZONTAL GPS CONTROL: COAST GUARD D-BEACON

US Army Corps of Engineers
San Francisco District
450 Golden Gate Ave
San Francisco, CA 94102

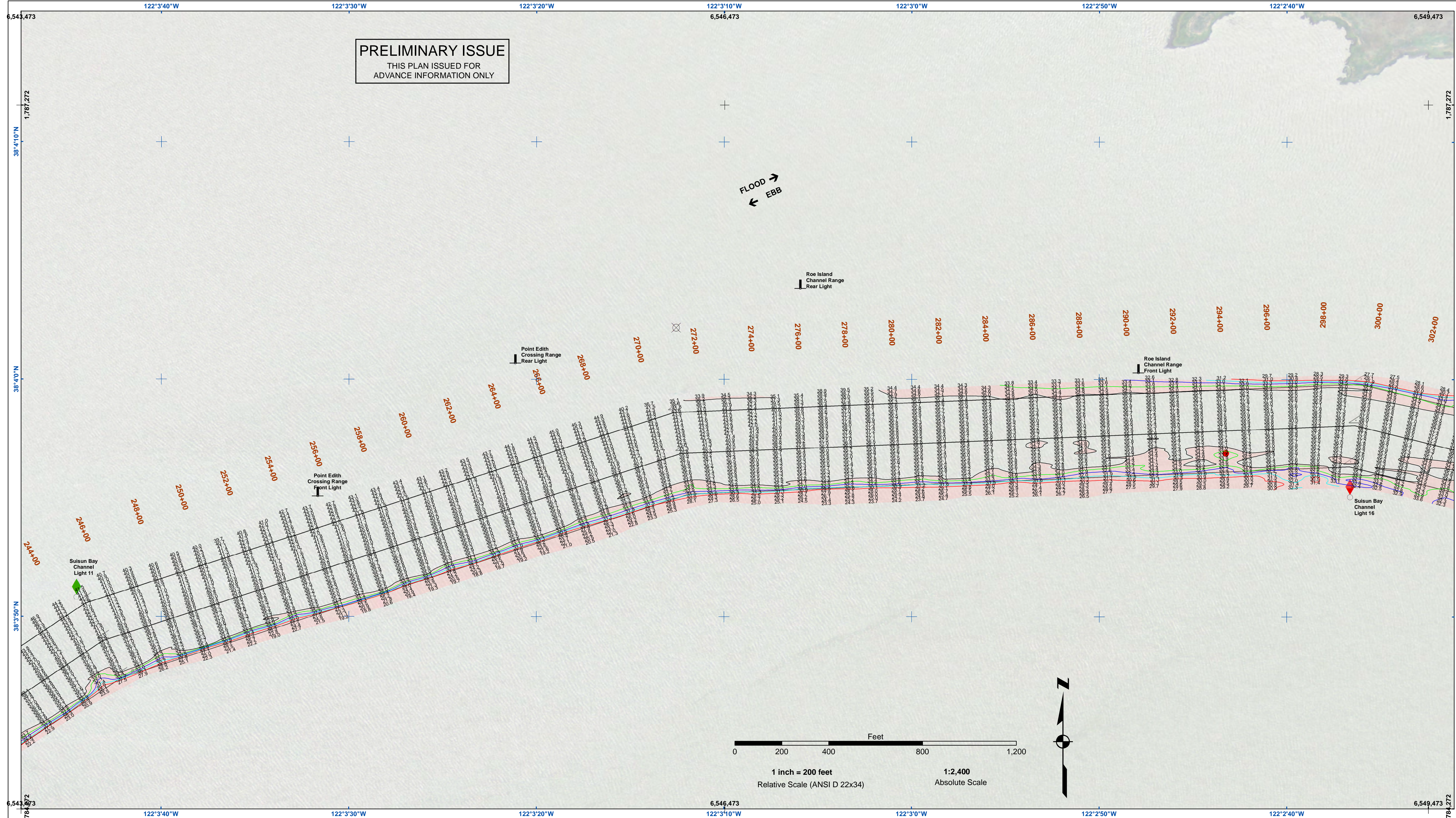
DISCLAIMER
Access Constraints: The United States Government furnishes this information as a service to the public and does not warrant the accuracy, reliability, usability, or suitability for any particular purpose of the information. The user is responsible for the results of any application of the data for other than its intended purpose. These data belong to the Government. Therefore the recipient may not transfer these data to others without also transferring this disclaimer.

Distribution Liability: The data represents the results of data Engineers activity and indicates the general existing conditions. As such, it is only valid for its intended use, content, time and accuracy specifications. The user is responsible for the results of any application of the data for other than its intended purpose.

Prepared Under the Direction of KEVIN P. ARNETT LT Colonel, C.E., District Engineer	Chart Date: May 31, 2023
Submittal: Hydro Survey Team Leader	Designed by: PDT
Recommendation: Chief, Hydro Survey Section	Drawn by: PDT
Approval: Chief, Construction Branch	

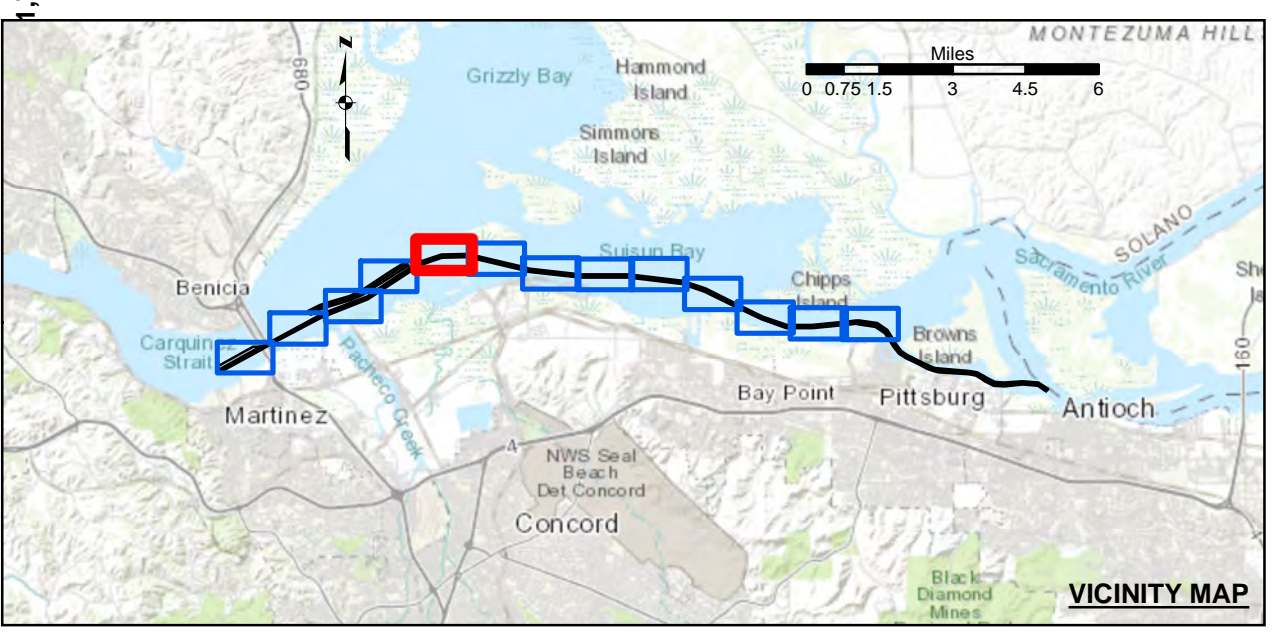
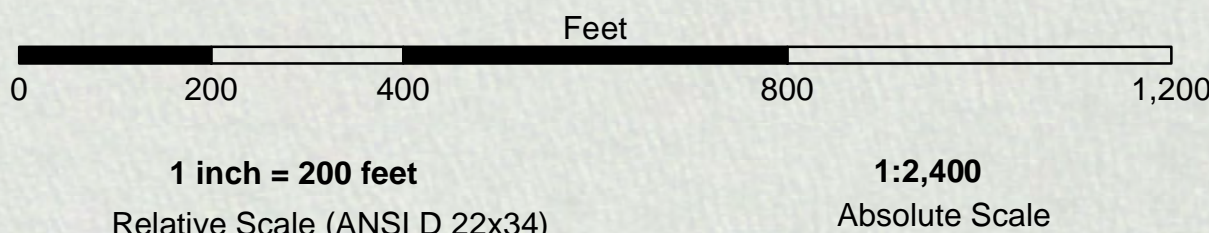
CALIFORNIA
CONTRA COSTA COUNTY
SUISUN BAY CHANNEL
CONDITION SURVEY
3, 10 & 25 MAY 2023

Sheet Reference Number
4 of 13



PRELIMINARY ISSUE
THIS PLAN ISSUED FOR
ADVANCE INFORMATION ONLY

FLOOD →
← EBB



- | | | |
|----------------------------|--------------------|-----------------|
| Federal Navigation Channel | Beacon, General | Contours |
| Shoaling Area | Obstruction Point | |
| Placement Area | Navigation Buoy | |
| Anchorage Area | Navigation Buoy | |
| Wreck Area | Shoalest Sounding* | |
| Submerged Wreck | | -35 |
| Angle Point | | -34 |
| | | -33 |
| | | -32 |
| | | -31 |

NOTES:
HORIZONTAL COORDINATE SYSTEM:
NORTH AMERICAN DATUM OF 1983 (NAD83), PROJECTED TO THE STATE PLANE COORDINATE SYSTEM (SPCS), CALIFORNIA ZONE II. DISTANCE UNITS IN U.S. SURVEY FEET.
VERTICAL DATUM:
SOUNDINGS ARE SHOWN IN FEET AND INDICATE DEPTHS BELOW MEAN LOWER LOW WATER.
THE INFORMATION DEPICTED ON THIS MAP REPRESENTS THE RESULTS OF A SURVEY CONDUCTED ON THE DATE INDICATED AND CAN ONLY BE CONSIDERED TO REPRESENT THE GENERAL CONDITION EXISTING AT THAT TIME.
PLANE GRID, BEARING AND COORDINATES ARE BASED ON THE STATE OF CALIFORNIA COORDINATE SYSTEM, LAMBERT CONFORMAL PROJECTION, ZONE II NAD 83, CALIFORNIA, AS DESCRIBED IN SPECIAL PUBLICATION NO. 235, PUBLISHED BY NATIONAL OCEAN SURVEY.
BASE MAPS ARE USDA NAIP 2010.
*SHOALEST SOUNDING PER QUARTER PER REACH
DRAWING NOT TO BE USED FOR NAVIGATION, ONLY CHANNEL CONDITION AT DATE OF SURVEY.
THE LOCATION OF ALL NAVIGATION AIDS ARE BASED ON INFORMATION PROVIDED BY THE U.S. COAST GUARD. BUOY LOCATIONS REPRESENT THE POSITION OF THE SINKER ONLY.

SURVEYED BY THE CORPS OF ENGINEERS.
SOUNDING FOR THE CHANNEL MEASURED WITH MULTIBEAM ECHOSOUNDER AND ARE SHOWN TO THE NEAREST TENTH FOOT.
SOUNDINGS ARE BASED ON THE DATUM OF MEAN LOWER LOW WATER AT THE LOCALITY.
THE PROJECT DEPTH IS 35 FEET.
VERTICAL CONTROL:
SUISUN BAY CHANNEL (LINES 00+00 TO 660+00) BENCHMARK "9" (1948), USC&GS DISK ELEV 14.875 FT MLLW., TIDE GAUGE LOCATED AT PORT OF BENICIA DOCK.
(LINES 150+00 TO 500+00) BENCHMARK "5144-P" (1990 RESET 1997), (LINES 500+00 TO 660+00) BENCHMARK "5144-P" (1990 RESET 1997), USC&GS DISK ELEV 11.83 FT MLLW., TIDE GAUGE LOCATED AT CONCORD NAVAL WEAPONS STATION TUG DOCK, NOAA STATION.
(LINES 660+00 TO 734+45) BENCHMARK "5096-B", USC&GS DISK ELEV 21.76 FT MLLW., TIDE GAUGE LOCATED AT DIABLO SERVICE DOCK.
HORIZONTAL GPS CONTROL: COAST GUARD D-BEACON



DISCLAIMER
The United States Government furnishes this information as a public service. It is not intended to be used for any purpose other than that for which it was prepared. The user is responsible for the results of any application of the data for other than its intended purpose. The user is responsible for the results of any application of the data for other than its intended purpose. The user is responsible for the results of any application of the data for other than its intended purpose.

Prepared Under the Direction of KEVIN P. ARNETT LT COLONEL, C.E., DISTRICT ENGINEER	Chart Date: May 31, 2023
Submitted: Hydro Survey Team Leader	Designed by: PDT
Recommended: Chief, Hydro Survey Section	Plotted by: PDT
Approved: Chief, Construction Branch	Checked by: PDT
	Drawn by: PDT

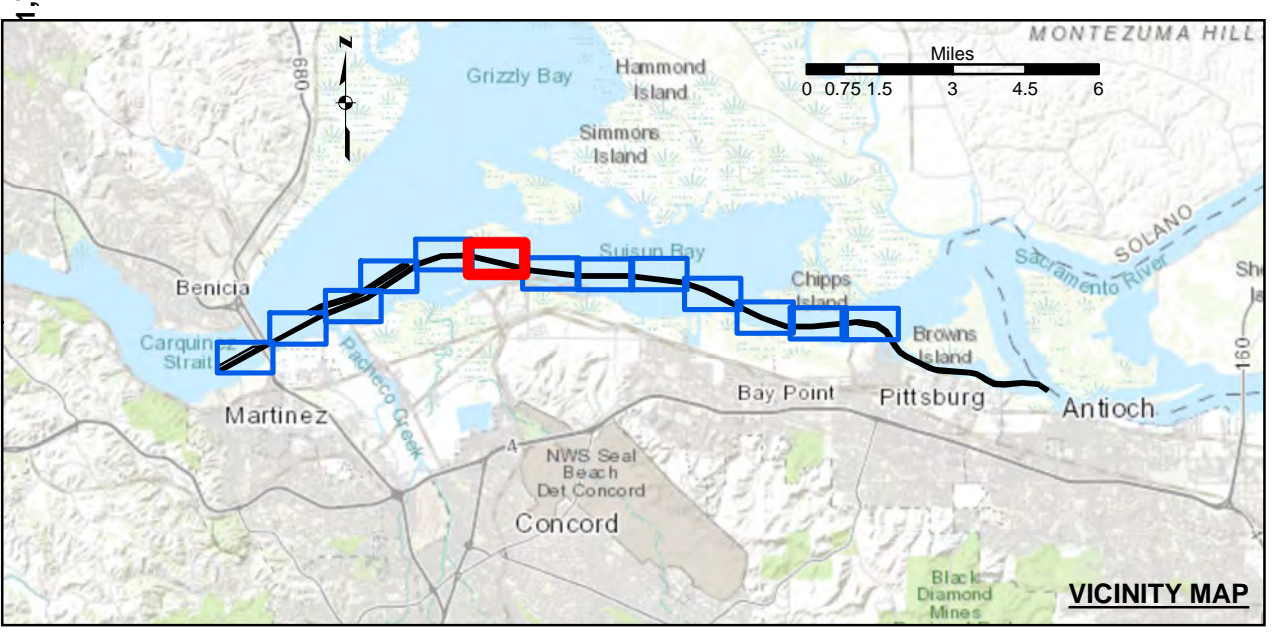
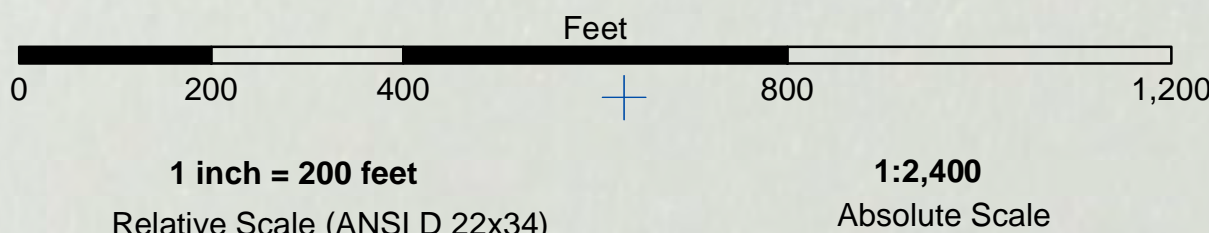
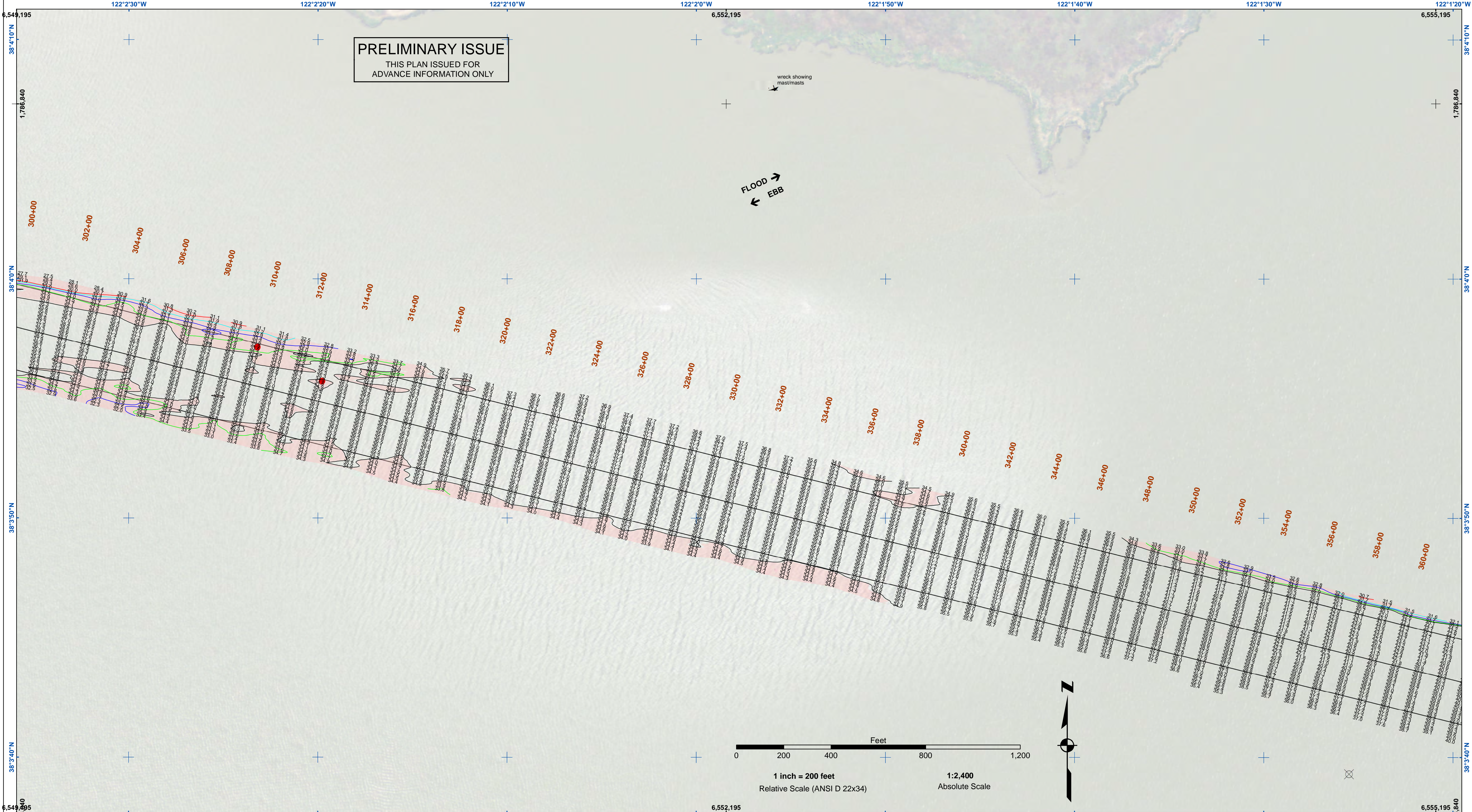
CALIFORNIA
CONTRA COSTA COUNTY
SUISUN BAY CHANNEL
CONDITION SURVEY
3, 10 & 25 MAY 2023

Sheet Reference Number
5 of 13

PRELIMINARY ISSUE
THIS PLAN ISSUED FOR
ADVANCE INFORMATION ONLY

US Army Corps of Engineers
San Francisco District
450 Golden Gate Ave
San Francisco, CA 94102

DISCLAIMER
The United States Government furnishes this information as a service to the public and does not warrant, express or implied, the accuracy, completeness, or reliability of the information for any particular purpose. The user is responsible for the results of any application of the data for other than its intended purpose. These data belong to the Government. Therefore, the user may not reproduce or disseminate these data to others without also transferring this disclaimer.



- | | | |
|----------------------------|--------------------|----------|
| Federal Navigation Channel | Beacon, General | Contours |
| Shoaling Area | Obstruction Point | -35 |
| Placement Area | Navigation Buoy | -34 |
| Anchorage Area | Navigation Buoy | -33 |
| Wreck Area | Shoalest Sounding* | -32 |
| Submerged Wreck | | -31 |
| Angle Point | | |

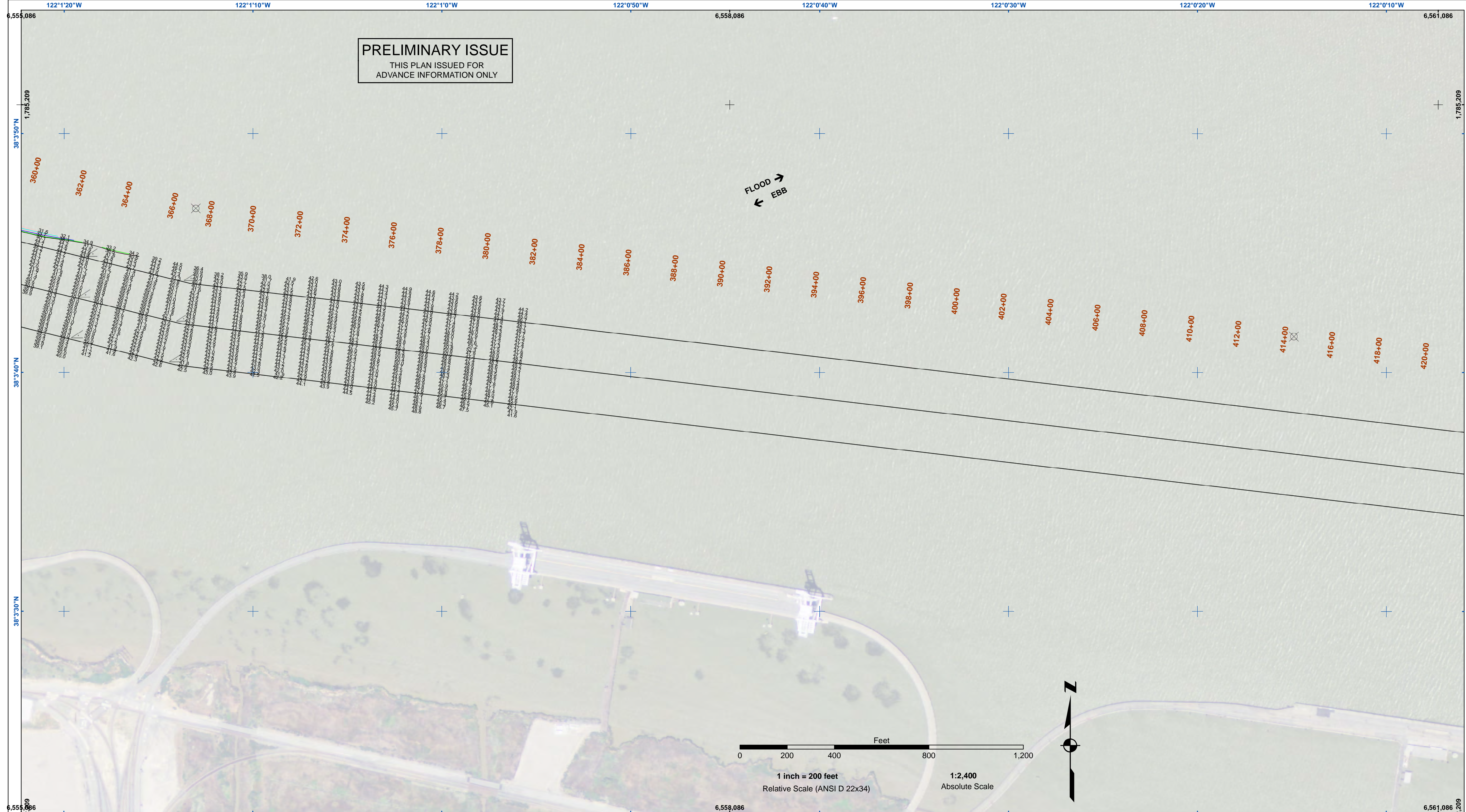
NOTES:
HORIZONTAL COORDINATE SYSTEM: NORTH AMERICAN DATUM OF 1983 (NAD83), PROJECTED TO THE STATE PLANE COORDINATE SYSTEM (SPCS), CALIFORNIA ZONE II. DISTANCE UNITS IN U.S. SURVEY FEET.
VERTICAL DATUM: SOUNDINGS ARE SHOWN IN FEET AND INDICATE DEPTHS BELOW MEAN LOWER LOW WATER.
THE INFORMATION DEPICTED ON THIS MAP REPRESENTS THE RESULTS OF A SURVEY CONDUCTED ON THE DATE INDICATED AND CAN ONLY BE CONSIDERED TO REPRESENT THE GENERAL CONDITION EXISTING AT THAT TIME.
PLANE GRID, BEARING AND COORDINATES ARE BASED ON THE STATE OF CALIFORNIA COORDINATE SYSTEM, LAMBERT CONFORMAL PROJECTION, ZONE II NAD 83, CALIFORNIA, AS DESCRIBED IN SPECIAL PUBLICATION NO. 235, PUBLISHED BY NATIONAL OCEAN SURVEY.
BASE MAPS ARE USDA NAIP 2010.
*SHOALEST SOUNDING PER QUARTER PER REACH
DRAWING NOT TO BE USED FOR NAVIGATION, ONLY CHANNEL CONDITION AT DATE OF SURVEY.
THE LOCATION OF ALL NAVIGATION AIDS ARE BASED ON INFORMATION PROVIDED BY THE U.S. COAST GUARD. BUOY LOCATIONS REPRESENT THE POSITION OF THE SINKER ONLY.

SURVEYED BY THE CORPS OF ENGINEERS.
SOUNDING FOR THE CHANNEL MEASURED WITH MULTIBEAM ECHOSOUNDER AND ARE SHOWN TO THE NEAREST TENTH FOOT.
SOUNDINGS ARE BASED ON THE DATUM OF MEAN LOWER LOW WATER AT THE LOCALITY.
THE PROJECT DEPTH IS 35 FEET.
VERTICAL CONTROL: SUISUN BAY CHANNEL (LINES 00+00 TO 660+00) BENCHMARK "9" (1948), USC&GS DISK ELEV 14.875 FT MLLW. TIDE GAUGE LOCATED AT PORT OF BENICIA DOCK. (LINES 150+00 TO 500+00) BENCHMARK "5144-P" (1990 RESET 1997), USC&GS DISK ELEV 11.83 FT MLLW. TIDE GAUGE LOCATED AT CONCORD NAVAL WEAPONS STATION TUG DOCK, NOAA STATION. (LINES 660+00 TO 734+45) BENCHMARK "5096-B", USC&GS DISK ELEV 21.76 FT MLLW. TIDE GAUGE LOCATED AT DIABLO SERVICE DOCK.
HORIZONTAL GPS CONTROL: COAST GUARD D-BEACON

Prepared Under the Direction of KEVIN P. ARNETT LT Colonel, C.E., District Engineer	Chart Date: May 31, 2023
Submitted: Hydro Survey Team Leader	Designed by: PDT
Recommended: Chief, Hydro Survey Section	Plotted by: PDT
Approved: Chief, Construction Branch	Checked by: PDT
	Drawn by: PDT

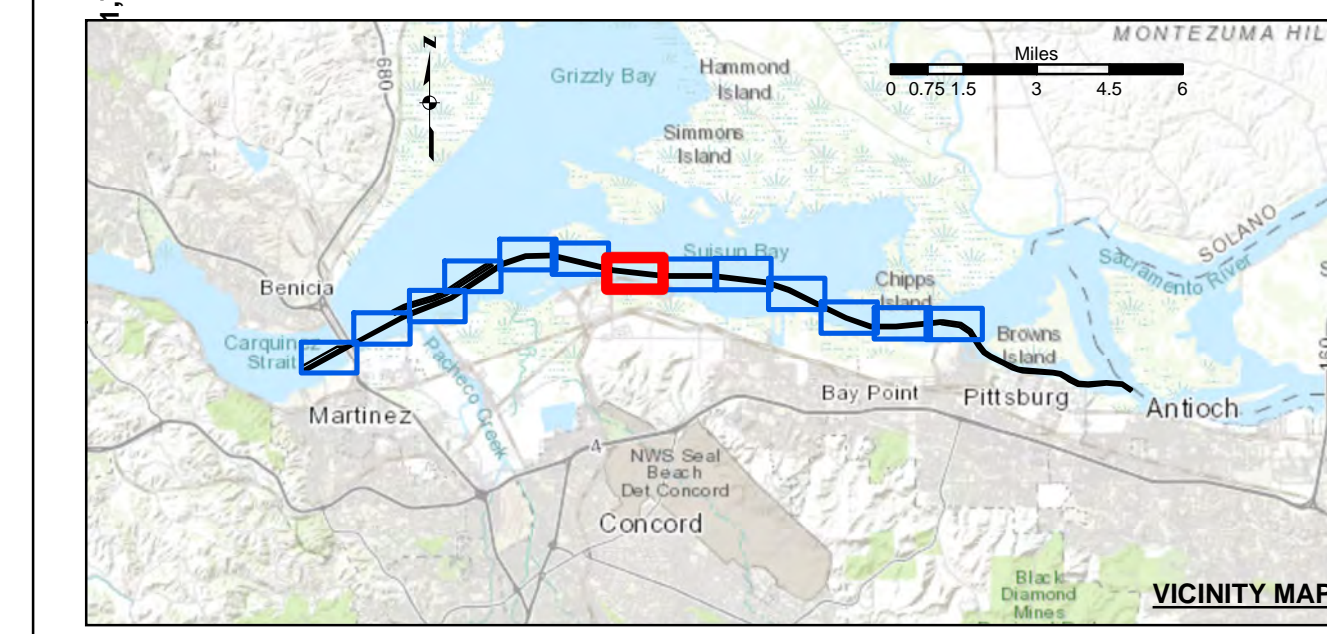
CALIFORNIA
CONTRA COSTA COUNTY
SUISUN BAY CHANNEL
CONDITION SURVEY
3, 10 & 25 MAY 2023

Sheet Reference Number
6 of 13



PRELIMINARY ISSUE
THIS PLAN ISSUED FOR
ADVANCE INFORMATION ONLY

FLOOD →
← EBB



- | | | | | | |
|--|----------------------------|--|--------------------|-----------------|-----|
| | Federal Navigation Channel | | Beacon, General | Contours | |
| | Shoaling Area | | Obstruction Point | | |
| | Placement Area | | Navigation Buoy | | |
| | Anchorage Area | | Navigation Buoy | | |
| | Wreck Area | | Shoalest Sounding* | | |
| | Submerged Wreck | | | | -35 |
| | Angle Point | | | | -34 |
| | | | | | -33 |
| | | | | | -32 |
| | | | | | -31 |

NOTES:
HORIZONTAL COORDINATE SYSTEM:
NORTH AMERICAN DATUM OF 1983 (NAD83), PROJECTED TO THE STATE PLANE COORDINATE SYSTEM (SPCS), CALIFORNIA ZONE II. DISTANCE UNITS IN U.S. SURVEY FEET.
VERTICAL DATUM:
SOUNDINGS ARE SHOWN IN FEET AND INDICATE DEPTHS BELOW MEAN LOWER LOW WATER.
THE INFORMATION DEPICTED ON THIS MAP REPRESENTS THE RESULTS OF A SURVEY CONDUCTED ON THE DATE INDICATED AND CAN ONLY BE CONSIDERED TO REPRESENT THE GENERAL CONDITION EXISTING AT THAT TIME.
PLANE GRID, BEARING AND COORDINATES ARE BASED ON THE STATE OF CALIFORNIA COORDINATE SYSTEM, LAMBERT CONFORMAL PROJECTION, ZONE II NAD 83, CALIFORNIA, AS DESCRIBED IN SPECIAL PUBLICATION NO. 235, PUBLISHED BY NATIONAL OCEAN SURVEY.
BASE MAPS ARE USDA NAIP 2010.
*SHOALEST SOUNDING PER QUARTER PER REACH
DRAWING NOT TO BE USED FOR NAVIGATION, ONLY CHANNEL CONDITION AT DATE OF SURVEY.
THE LOCATION OF ALL NAVIGATION AIDS ARE BASED ON INFORMATION PROVIDED BY THE U.S. COAST GUARD. BUOY LOCATIONS REPRESENT THE POSITION OF THE SINKER ONLY.

SURVEYED BY THE CORPS OF ENGINEERS.
SOUNDING FOR THE CHANNEL MEASURED WITH MULTIBEAM ECHOSOUNDER AND ARE SHOWN TO THE NEAREST TENTH FOOT.
SOUNDINGS ARE BASED ON THE DATUM OF MEAN LOWER LOW WATER AT THE LOCALITY.
THE PROJECT DEPTH IS 35 FEET.
VERTICAL CONTROL:
SUISUN BAY CHANNEL
(LINES 00+00 TO 660+00) BENCHMARK "9" (1948), USC&GS DISK ELEV 14.875 FT MLLW.
TIDE GAUGE LOCATED AT PORT OF BENICIA DOCK.
(LINES 660+00 TO 733+45) BENCHMARK "5144-P" (1990 RESET 1997), USC&GS DISK ELEV 21.76 FT MLLW.
TIDE GAUGE LOCATED AT CONCORD NAVAL WEAPONS STATION TUG DOCK, NOAA STATION.
(LINES 733+45 TO 733+45) BENCHMARK "5096-B", USC&GS DISK ELEV 21.76 FT MLLW.
TIDE GAUGE LOCATED AT DIABLO SERVICE DOCK.
HORIZONTAL GPS CONTROL: COAST GUARD D-BEACON



DISCLAIMER
The United States Government furnishes this information as a service to the public. It is not intended to be used for any purpose other than that intended by the Government. The user is responsible for the results of any application of the data for other than the intended purpose. The user is responsible for the results of any application of the data for other than the intended purpose. The user is responsible for the results of any application of the data for other than the intended purpose.

Prepared Under the Direction of	Chart Date:
LT COLONEL K.E. ARNETT	May 31, 2023
Subproject:	Designed by:
Hydro Survey Team Leader	PDT
Recommended:	Checked by:
Chief, Hydro Survey Section	PDT
Approved:	Drawn by:
Chief, Construction Branch	PDT

CALIFORNIA
CONTRA COSTA COUNTY
SUISUN BAY CHANNEL
CONDITION SURVEY
3, 10 & 25 MAY 2023

Sheet Reference Number
7 of 13