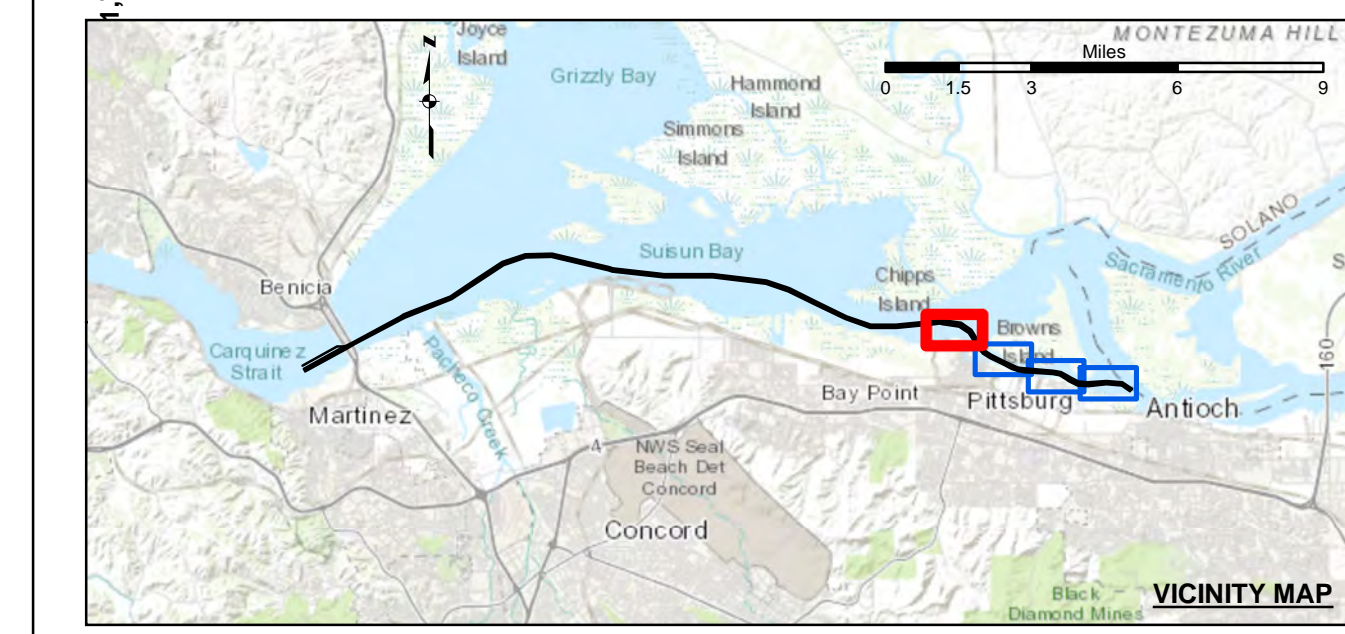


Angle Point	Easting	Northing
01	6522251.24	1773544.02
01-A	6522058.94	1773894.77
02	6526638.33	1775949.19
02-A	6525876.51	1775995.5
03	6526814.71	1776043.48
04	6527523.96	1776423.75
05	6532628.85	1779160.81
06	6533058.01	1779418.58
07	6534097.47	1779856.02
08	6538142.48	1781404.93
09	6541140.44	1783407.77
10	6543746.5	1785148.8
11	6546257.51	1786960.74
12	6549181.52	1788980.86
13	6555384.18	1794554.99
14	6555800.55	1794452.57
15	6561371.57	1793900.48
16	6563022.2	1793817.72
17	6566831.6	1793855.42
18	6570705.41	1793336.79
19	6572444.64	1793115.37
20	6574974.06	1792266.36
21	6576022.73	1790780.8
22	6581155.52	179254.25
23	6583747.56	1778351.3
24	6585358.69	1778330.5
25	6586492.14	1778315.87
26	6590754.42	1778766.38
27	6591256.1	1778845.54
28	6591599.01	1778800.33
29	6593537.77	1778544.71
30	6594899.78	1777747.44
31	6595729.72	1776115.57
32	6596208.21	1775521.7
33	6596646.81	1775104.81
34	6598023.91	1774462.21
35	6599256.55	1773901.57
36	6599759.13	1773700.06
37	6600293.83	1773614.79
38	6603558.93	1773364.99
39	6604408.52	1773200.93
40	6605166.76	1772783.99
41	6605493.42	1772571.98
42	6605866.48	1772482.32
43	6606339.33	1772133.75
44	6607329.74	1772075.69
45	6609314.54	1772257.76
46	6611103.07	1772096.82
47	6612148.35	1771412.18

Angle Point	Easting	Northing
48	6611928.32	1771078.24
49	6610969.28	1771713.82
50	6609351.08	1771859.43
51	6607368.28	1771677.36
52	6606234.39	1771743.72
53	6605546.71	1772096.55
54	6605222.02	1772254.31
55	6604935.26	1772457.79
56	6604271.82	1772822.6
57	6603528.42	1772966.17
58	6602633.32	1773215.96
59	6599652.22	1773313.41
60	6599077.86	1773543.71
61	6598135.33	1774014.34
62	6596868.12	1774746.95
63	6596938.27	1775223.39
64	6596391.45	1775902.1
65	6594404.78	1777464.31
66	6593391.34	1778160.67
67	6591480.44	1778412.52
68	6591255.17	1778442.21
69	6590791.21	1778418.32
70	6586528.94	1777967.81
71	6585297.54	1777983.71
72	6583688.58	1778004.51
73	6581002.2	1778939.63
74	6577859.51	1780422.27
75	6574841.16	1781841.78
76	6572368.08	1782772.55
77	6570644.56	1782991.71
78	6568611.24	1783505.19
79	6562960.36	1783467.06
80	6561352.98	1783450.27
81	655738.17	1784107.49
82	6555323.24	1784209.4
83	6549136.2	1785728.94
84	6546319.67	1785613
85	6543900.48	1784830.75
86	6541295.27	1783090.31
87	6538304.13	1781092.05
88	6534227.97	1779531.21
89	6533218.72	1779102.27
90	6532770.08	1778896.24
91	6527855.58	1778153.9
92	6526956.17	1775778.89
93	6522395.41	1773280.93



	Federal Navigation Channel		Beacon, General	Contours
	Shoaling Area		Obstruction Point	
	Placement Area		Navigation Buoy	
	Anchorage Area		Navigation Buoy	
	Wreck Area		Navigation Buoy	
	Submerged Wreck		Shoalest Sounding*	
	Angle Point			

NOTES:

HORIZONTAL COORDINATE SYSTEM:
NORTH AMERICAN DATUM OF 1983 (NAD83), PROJECTED TO THE STATE PLANE COORDINATE SYSTEM (SPCS), CALIFORNIA ZONE II. DISTANCE UNITS IN U.S. SURVEY FEET.

VERTICAL DATUM:
SOUNDINGS ARE SHOWN IN FEET AND INDICATE DEPTHS BELOW MEAN LOWER LOW WATER.

THE INFORMATION DEPICTED ON THIS MAP REPRESENTS THE RESULTS OF A SURVEY CONDUCTED ON THE DATE INDICATED AND CAN ONLY BE CONSIDERED TO REPRESENT THE GENERAL CONDITION EXISTING AT THAT TIME.

PLANE GRID, BEARING AND COORDINATES ARE BASED ON THE STATE OF CALIFORNIA COORDINATE SYSTEM, LAMBERT CONFORMAL PROJECTION, ZONE II NAD 83, CALIFORNIA, AS DESCRIBED IN SPECIAL PUBLICATION NO. 235, PUBLISHED BY NATIONAL AERONAUTICS AND SPACE ADMINISTRATION, WASHINGTON, D.C., 1985.

BASE MAPS ARE USDA NAIP 2010.

*SHOALEST SOUNDING PER QUARTER PER EACH

DRAWING NOT TO BE USED FOR NAVIGATION, ONLY CHANNEL CONDITION AT DATE OF SURVEY.

THE LOCATION OF ALL NAVIGATION AIDS ARE BASED ON INFORMATION PROVIDED BY THE U.S. COAST GUARD. BUOY LOCATIONS REPRESENT THE POSITION OF THE SINKER ONLY.

SURVEYED BY THE CORPS OF ENGINEERS.

SOUNDINGS WERE TAKEN BY FATHOMETER AND ARE SHOWN TO THE NEAREST TENTH OF A FOOT. SOUNDINGS ARE BASED ON THE DATUM OF MEAN LOWER LOW WATER AT THE LOCALITY.

THE PROJECT DEPTH IS 35 FEET.

VERTICAL CONTROL:
SUISUN BAY CHANNEL
(LINES 00+00 TO 160+00) BENCHMARK "9" (1948), USC&GS DISK
ELEV 14.875 FT MLLW.
TIDE GAUGE LOCATED AT PORT OF BENICIA DOCK.

(LINES 190+00 TO 500+00) BENCHMARK "5144-P" (1990 RESET 1997), USC&GS DISK, ELEV 11.83 FT MLLW.
TIDE GAUGE LOCATED AT CONCORD NAVAL WEAPONS STATION TUG DOCK, NOAA STATION.

(LINES 660+00 TO 733+45) BENCHMARK "5096-B", USC&GS DISK, ELEV 21.76 FT MLLW.
TIDE GAUGE LOCATED AT DIABLO SERVICE DOCK.

HORIZONTAL GPS CONTROL: COAST GUARD D-BEACON

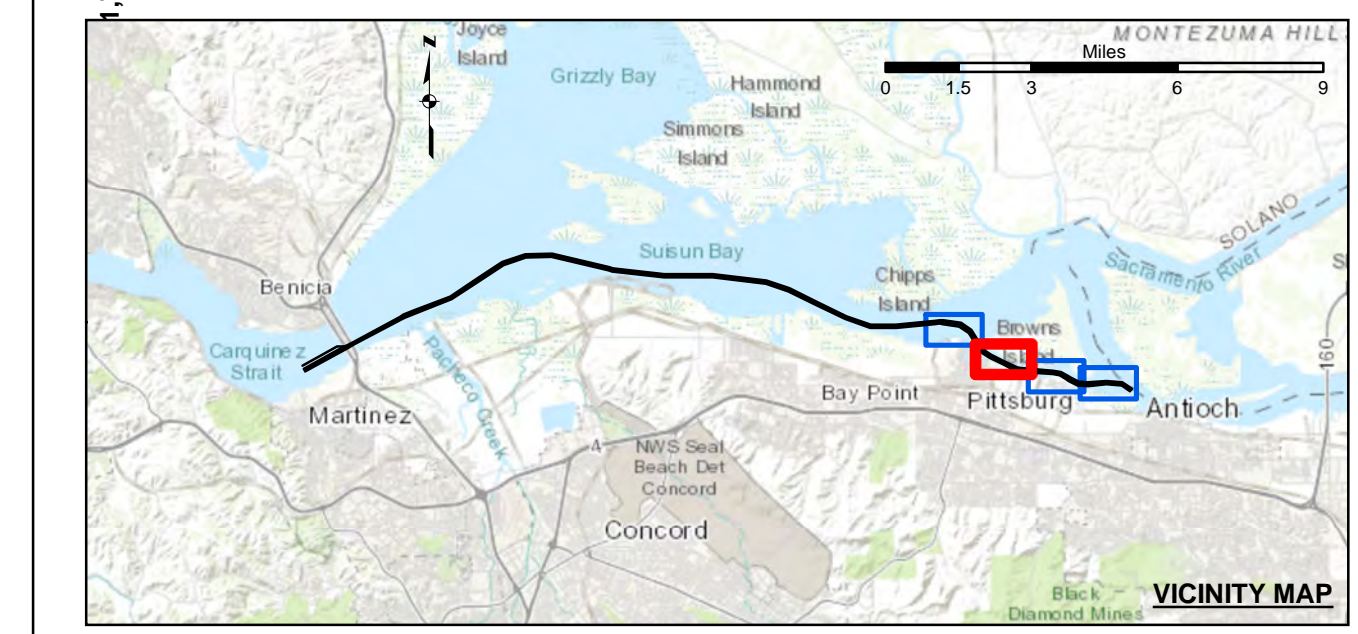
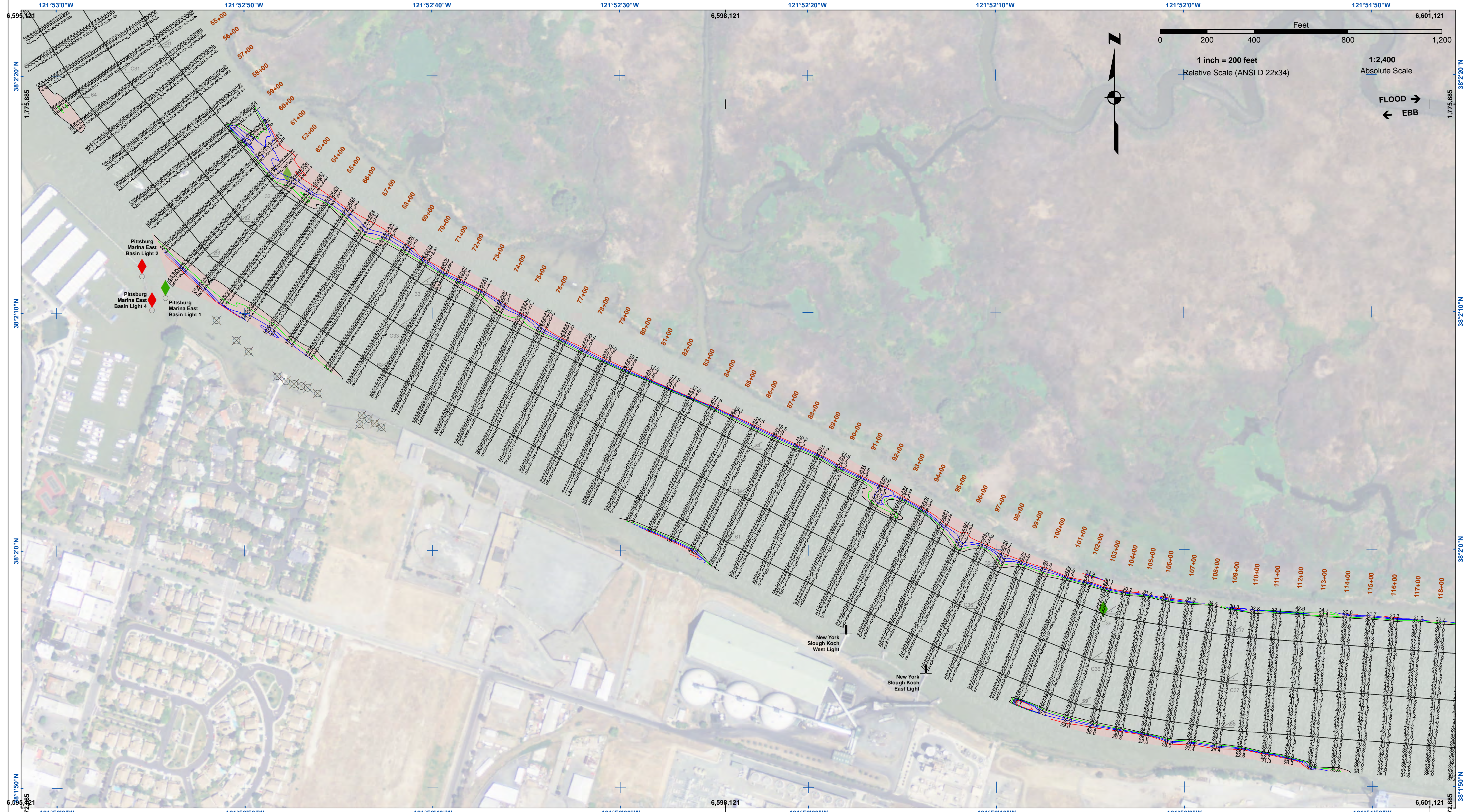
US Army Corps of Engineers
San Francisco District
450 Golden Gate Ave
San Francisco, CA 94102

DISCLAIMER
The United States Government furnishes this information for the general information of the user. The user is responsible for the results of any application of this data for other than its intended purpose. The user is responsible for the accuracy of the data for other than its intended purpose. The user is responsible for the accuracy of the data for other than its intended purpose. The user is responsible for the accuracy of the data for other than its intended purpose.

Chart Date:	Dec 06, 2019
Designed by:	PDT
Plotted by:	PDT
Checked by:	PDT
Drawn by:	PDT

CONTRA COSTA COUNTY
CALIFORNIA
SUISUN BAY CHANNEL
NEW YORK SLOUGH
POST-DREDGE SURVEY
30 SEPTEMBER 2019
17, 22 & 26 OCTOBER 2019

Sheet Reference Number
1 of 4



	Federal Navigation Channel		Beacon, General	Contours	
	Shoaling Area		Obstruction Point		
	Placement Area		Navigation Buoy		
	Anchorage Area		Navigation Buoy		
	Wreck Area		Shoalest Sounding*		
	Submerged Wreck				-35
	Angle Point				-34
					-33
					-32
					-31

NOTES:

HORIZONTAL COORDINATE SYSTEM:
NORTH AMERICAN DATUM OF 1983 (NAD83), PROJECTED TO THE STATE PLANE COORDINATE SYSTEM (SPCS), CALIFORNIA ZONE II. DISTANCE UNITS IN U.S. SURVEY FEET.

VERTICAL DATUM:
SOUNDINGS ARE SHOWN IN FEET AND INDICATE DEPTHS BELOW MEAN LOWER LOW WATER.

THE INFORMATION DEPICTED ON THIS MAP REPRESENTS THE RESULTS OF A SURVEY CONDUCTED ON THE DATE INDICATED AND CAN ONLY BE CONSIDERED TO REPRESENT THE GENERAL CONDITION EXISTING AT THAT TIME.

PLANE GRID, BEARING AND COORDINATES ARE BASED ON THE STATE OF CALIFORNIA COORDINATE SYSTEM, LAMBERT CONFORMAL PROJECTION, ZONE II NAD 83, CALIFORNIA, AS DESCRIBED IN SPECIAL PUBLICATION NO. 235, PUBLISHED BY NATIONAL OCEAN SURVEY, BASE MAPS ARE USDA NAIP 2010.

*SHOALEST SOUNDING PER QUARTER PER REACH

DRAWING NOT TO BE USED FOR NAVIGATION, ONLY CHANNEL CONDITION AT DATE OF SURVEY. THE LOCATION OF ALL NAVIGATION AIDS ARE BASED ON INFORMATION PROVIDED BY THE U.S. COAST GUARD. BUOY LOCATIONS REPRESENT THE POSITION OF THE SINKER ONLY.

SURVEYED BY THE CORPS OF ENGINEERS.

SOUNDINGS WERE TAKEN BY FATHOMETER AND ARE SHOWN TO THE NEAREST TENTH OF A FOOT. SOUNDINGS ARE BASED ON THE DATUM OF MEAN LOWER LOW WATER AT THE LOCALITY.

THE PROJECT DEPTH IS 35 FEET.

VERTICAL CONTROL:
SUISUN BAY CHANNEL
(LINES 00+00 TO 160+00) BENCHMARK "9" (1948), USC&GS DISK ELEV 14.875 FT MLLW.
TIDE GAUGE LOCATED AT PORT OF BENICIA DOCK.

(LINES 190+00 TO 500+00) BENCHMARK "5144-P" (1990 RESET 1997), USC&GS DISK ELEV 11.83 FT MLLW.
TIDE GAUGE LOCATED AT CONCORD NAVAL WEAPONS STATION TUG DOCK, NOAA STATION.

(LINES 660+00 TO 733+45) BENCHMARK "5096-B", USC&GS DISK ELEV 21.76 FT MLLW.
TIDE GAUGE LOCATED AT DIABLO SERVICE DOCK.

HORIZONTAL GPS CONTROL: COAST GUARD D-BEACON

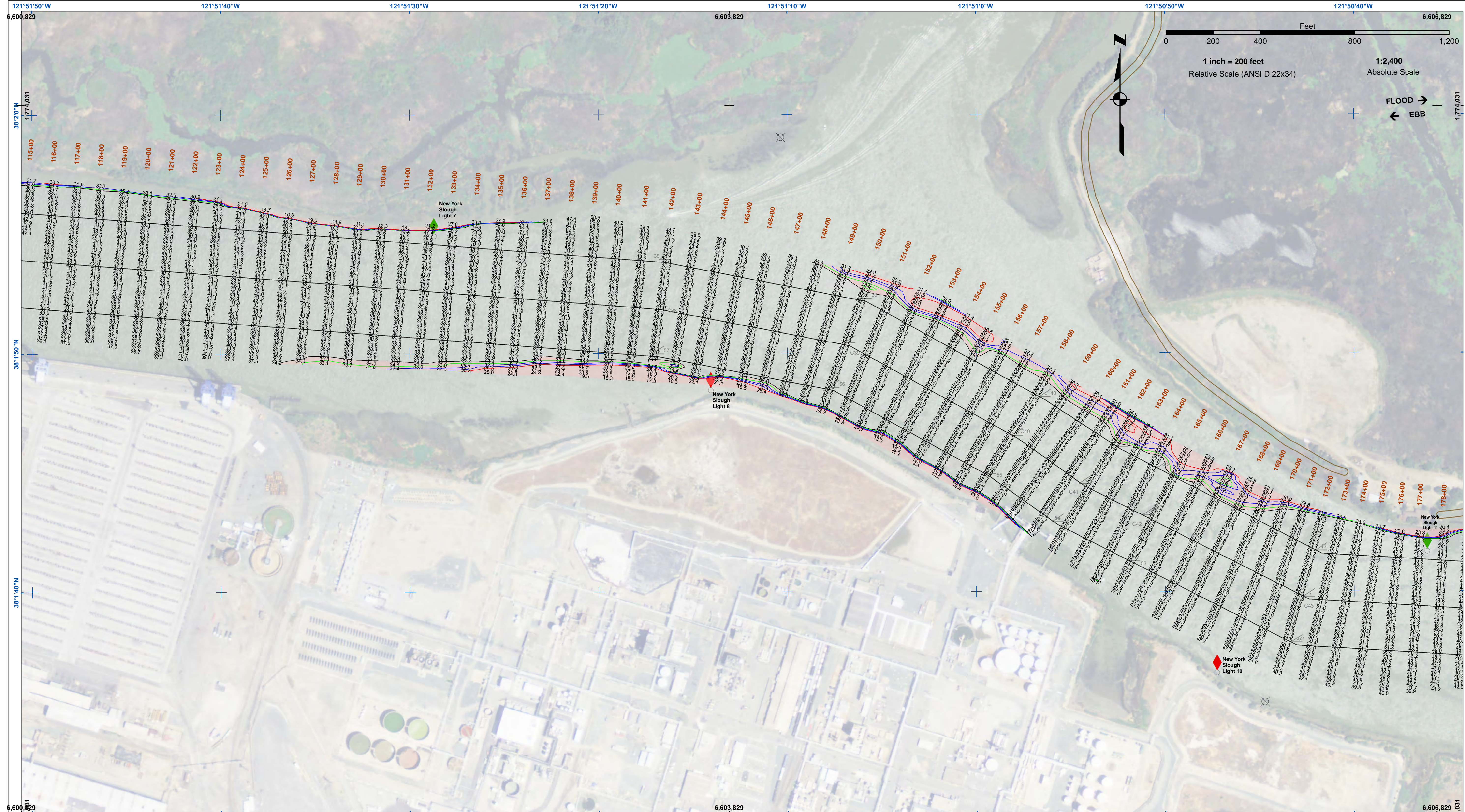
US Army Corps of Engineers
San Francisco District
450 Golden Gate Ave
San Francisco, CA 94102

DISCLAIMER
The United States Government furnishes this information for the general information of the user. The user is responsible for the results of any application of the data for other than its intended purpose. The user is responsible for the results of any application of the data for other than its intended purpose. The user is responsible for the results of any application of the data for other than its intended purpose.

Chart Date:	Dec 06, 2019
Designed by:	PDT
Plotted by:	PDT
Checked by:	PDT
Drawn by:	PDT

CALIFORNIA
CONTRA COSTA COUNTY
SUISUN BAY CHANNEL
NEW YORK SLOUGH
POST-DREDGE SURVEY
30 SEPTEMBER 2019
17, 22 & 26 OCTOBER 2019

Sheet Number
2 of 4



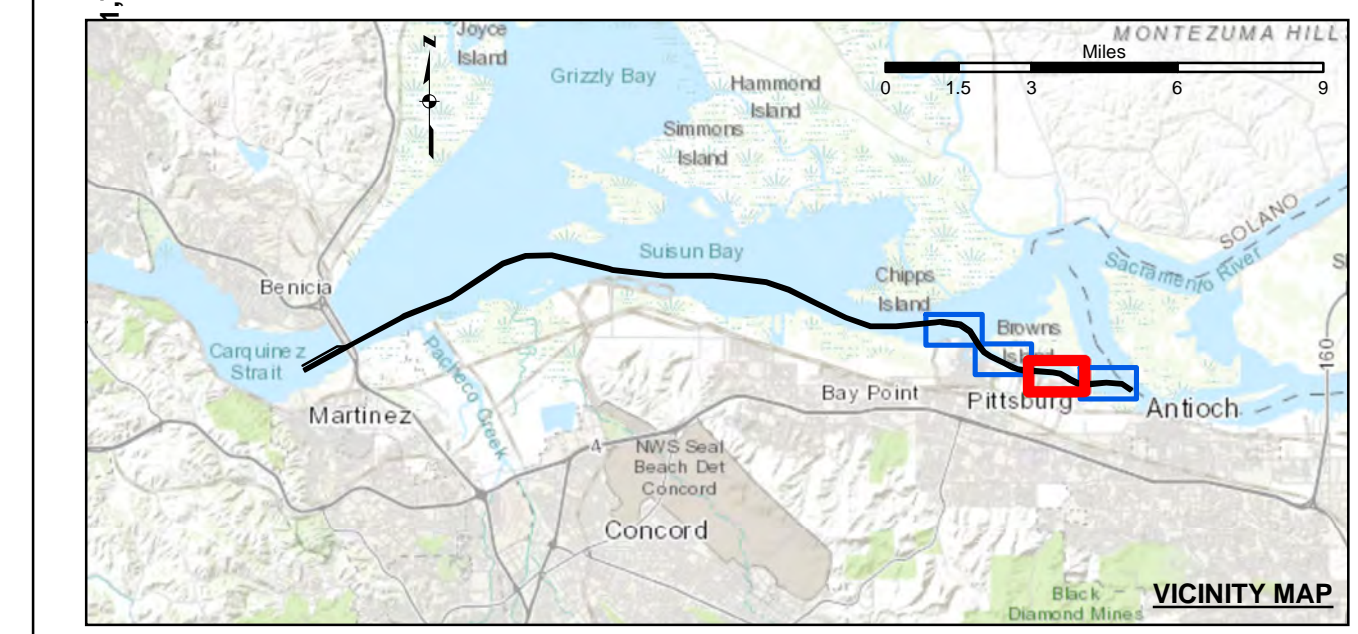
US Army Corps of Engineers
 San Francisco District
 450 Golden Gate Ave
 San Francisco, CA 94102

DISCLAIMER
 The United States Government furnishes this information as a service to the public and does not warrant, express or implied, the accuracy, completeness, or timeliness of the information. The user is responsible for the results of any application of the data for other than its intended purpose. The user may not transfer these data to others without also transferring this Disclaimer.

Chart Date:	Dec 06, 2019
Designed by:	PDT
Plotted By:	PDT
Checked By:	PDT
Drawn by:	PDT

CALIFORNIA
 CONTRA COSTA COUNTY
SUISUN BAY CHANNEL
NEW YORK SLOUGH
POST-DREDGE SURVEY
 30 SEPTEMBER 2019
 17, 22 & 26 OCTOBER 2019

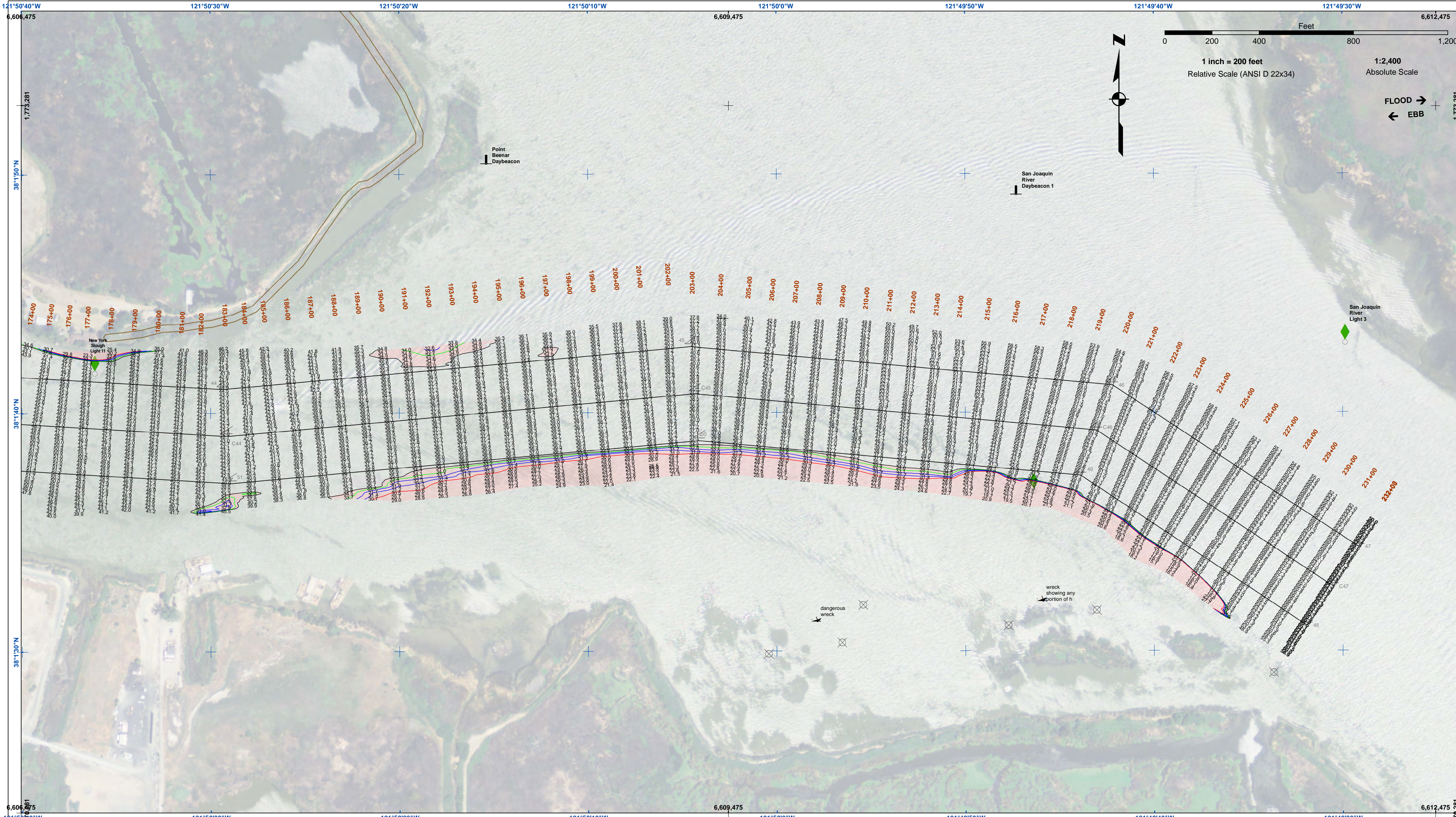
Sheet
Number
 3 of 4



Federal Navigation Channel	Beacon, General	Contours
Shoaling Area	Obstruction Point	-35
Placement Area	Navigation Buoy	-34
Anchorage Area	Navigation Buoy	-33
Wreck Area	Shoalest Sounding*	-32
Submerged Wreck		-31
Angle Point		

NOTES:
 HORIZONTAL COORDINATE SYSTEM:
 NORTH AMERICAN DATUM OF 1983 (NAD83), PROJECTED TO THE STATE PLANE COORDINATE SYSTEM (SPCS), CALIFORNIA ZONE II. DISTANCE UNITS IN U.S. SURVEY FEET.
 VERTICAL DATUM:
 SOUNDINGS ARE SHOWN IN FEET AND INDICATE DEPTHS BELOW MEAN LOWER LOW WATER.
 THE INFORMATION DEPICTED ON THIS MAP REPRESENTS THE RESULTS OF A SURVEY CONDUCTED ON THE DATE INDICATED AND CAN ONLY BE CONSIDERED TO REPRESENT THE GENERAL CONDITION EXISTING AT THAT TIME.
 PLANE GRID, BEARING AND COORDINATES ARE BASED ON THE STATE OF CALIFORNIA COORDINATE SYSTEM, LAMBERT CONFORMAL PROJECTION, ZONE II NAD 83, CALIFORNIA, AS DESCRIBED IN SPECIAL PUBLICATION NO. 235, PUBLISHED BY NATIONAL OCEAN SURVEY, BASE MAPS ARE USDA NAIP 2010.
 *SHOALEST SOUNDING PER QUARTER PER REACH
 DRAWING NOT TO BE USED FOR NAVIGATION, ONLY CHANNEL CONDITION AT DATE OF SURVEY.
 THE LOCATION OF ALL NAVIGATION AIDS ARE BASED ON INFORMATION PROVIDED BY THE U.S. COAST GUARD. BUOY LOCATIONS REPRESENT THE POSITION OF THE SINKER ONLY.

SURVEYED BY THE CORPS OF ENGINEERS.
 SOUNDINGS WERE TAKEN BY FATHOMETER AND ARE SHOWN TO THE NEAREST TENTH OF A FOOT. SOUNDINGS ARE BASED ON THE DATUM OF MEAN LOWER LOW WATER AT THE LOCALITY.
 THE PROJECT DEPTH IS 35 FEET.
 VERTICAL CONTROL:
 SUISUN BAY CHANNEL
 (LINES 00+00 TO 160+00) BENCHMARK "9" (1948), USC&GS DISK ELEV 14.875 FT MLLW.
 TIDE GAUGE LOCATED AT PORT OF BENICIA DOCK.
 (LINES 190+00 TO 500+00) BENCHMARK "5144-P" (1990 RESET 1997), USC&GS DISK, ELEV 11.83 FT MLLW.
 TIDE GAUGE LOCATED AT CONCORD NAVAL WEAPONS STATION TUG DOCK, NOAA STATION.
 (LINES 660+00 TO 733+45) BENCHMARK "5096-B", USC&GS DISK, ELEV 21.76 FT MLLW.
 TIDE GAUGE LOCATED AT DIABLO SERVICE DOCK.
 HORIZONTAL GPS CONTROL: COAST GUARD D-BEACON



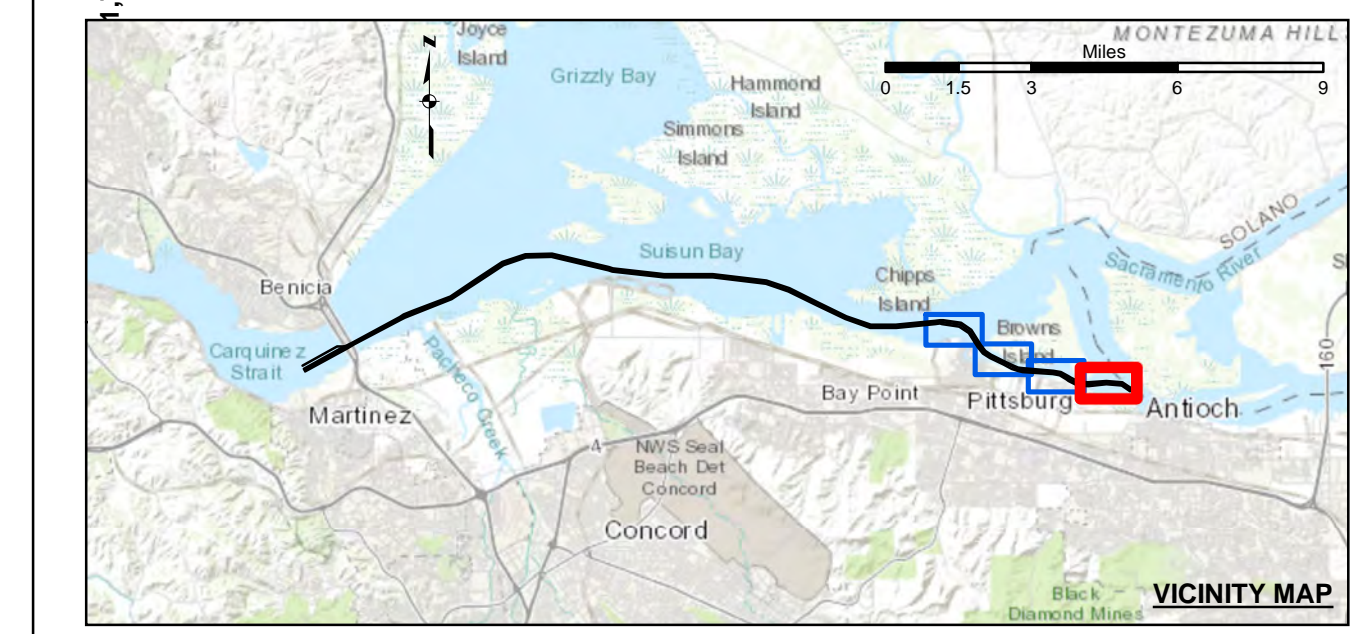
US Army Corps of Engineers
 San Francisco District
 450 Golden Gate Ave
 San Francisco, CA 94102

DISCLAIMER
 The United States Government furnishes the data represented on this chart for general information only. It is not intended for navigation. The user is responsible for the results of any application of the data for other than its intended purpose. The United States Government makes no warranty, expressed or implied, concerning the accuracy, completeness, or timeliness of the information furnished. The user is responsible for the results of any application of the data for other than its intended purpose. These data belong to the Government. Therefore, the user is not to transfer these data to others without also transferring the Disclaimer.

Chart Date:	Dec 06, 2019
Designed by:	PDT
Plotted By:	PDT
Checked By:	PDT
Drawn by:	PDT

CONTRA COSTA COUNTY
SUISUN BAY CHANNEL
 NEW YORK SLOUGH
 POST-DREDGE SURVEY
 30 SEPTEMBER 2019
 17, 22 & 26 OCTOBER 2019

Sheet Number
 4 of 4



Federal Navigation Channel	Beacon, General	Contours
Shoaling Area	Obstruction Point	-35
Placement Area	Navigation Buoy	-34
Anchorage Area	Navigation Buoy	-33
Wreck Area	Shoalest Sounding*	-32
Submerged Wreck		-31
Angle Point		

NOTES:
 HORIZONTAL COORDINATE SYSTEM:
 NORTH AMERICAN DATUM OF 1983 (NAD83), PROJECTED TO THE STATE PLANE COORDINATE SYSTEM (SPCS), CALIFORNIA ZONE II. DISTANCE UNITS IN U.S. SURVEY FEET.
 VERTICAL DATUM:
 SOUNDINGS ARE SHOWN IN FEET AND INDICATE DEPTHS BELOW MEAN LOWER LOW WATER.
 THE INFORMATION DEPICTED ON THIS MAP REPRESENTS THE RESULTS OF A SURVEY CONDUCTED ON THE DATE INDICATED AND CAN ONLY BE CONSIDERED TO REPRESENT THE GENERAL CONDITION EXISTING AT THAT TIME.
 PLANE GRID, BEARING AND COORDINATES ARE BASED ON THE STATE OF CALIFORNIA COORDINATE SYSTEM, LAMBERT CONFORMAL PROJECTION, ZONE II NAD 83, CALIFORNIA, AS DESCRIBED IN SPECIAL PUBLICATION NO. 235, PUBLISHED BY NATIONAL OCEAN SURVEY, BASE MAPS ARE USDA NAIP 2010.
 *SHOALEST SOUNDING PER QUARTER PER REACH
 DRAWING NOT TO BE USED FOR NAVIGATION, ONLY CHANNEL CONDITION AT DATE OF SURVEY.
 THE LOCATION OF ALL NAVIGATION AIDS ARE BASED ON INFORMATION PROVIDED BY THE U.S. COAST GUARD. BUOY LOCATIONS REPRESENT THE POSITION OF THE SINKER ONLY.

SURVEYED BY THE CORPS OF ENGINEERS.
 SOUNDINGS WERE TAKEN BY FATHOMETER AND ARE SHOWN TO THE NEAREST TENTH OF A FOOT. SOUNDINGS ARE BASED ON THE DATUM OF MEAN LOWER LOW WATER AT THE LOCALITY.
 THE PROJECT DEPTH IS 35 FEET.
 VERTICAL CONTROL:
 SUISUN BAY CHANNEL
 (LINES 00+00 TO 160+00) BENCHMARK "9" (1948), USC&GS DISK ELEV 14.875 FT MLLW.
 TIDE GAUGE LOCATED AT PORT OF BENICIA DOCK.
 (LINES 190+00 TO 500+00) BENCHMARK "5144-P" (1990 RESET 1997), USC&GS DISK ELEV 11.83 FT MLLW.
 TIDE GAUGE LOCATED AT CONCORD NAVAL WEAPONS STATION TUG DOCK, NOAA STATION.
 (LINES 660+00 TO 733+45) BENCHMARK "5096-B", USC&GS DISK ELEV 21.76 FT MLLW.
 TIDE GAUGE LOCATED AT DIABLO SERVICE DOCK.
 HORIZONTAL GPS CONTROL: COAST GUARD D-BEACON