

US Army Corps of Engineers
San Francisco District
450 Golden Gate Ave
San Francisco, CA 94102

DISCLAIMER
The United States Government makes no warranty, expressed or implied concerning the accuracy, completeness, timeliness, or use of the information contained herein. The user is responsible for the results of any application of the data for other than its intended purpose. The user shall indemnify and hold the United States Government harmless from any liability whatsoever to any person by reason of any use made hereof. These data belong to the Government. Therefore the recipient may not transfer these data to others without also transferring this Disclaimer.

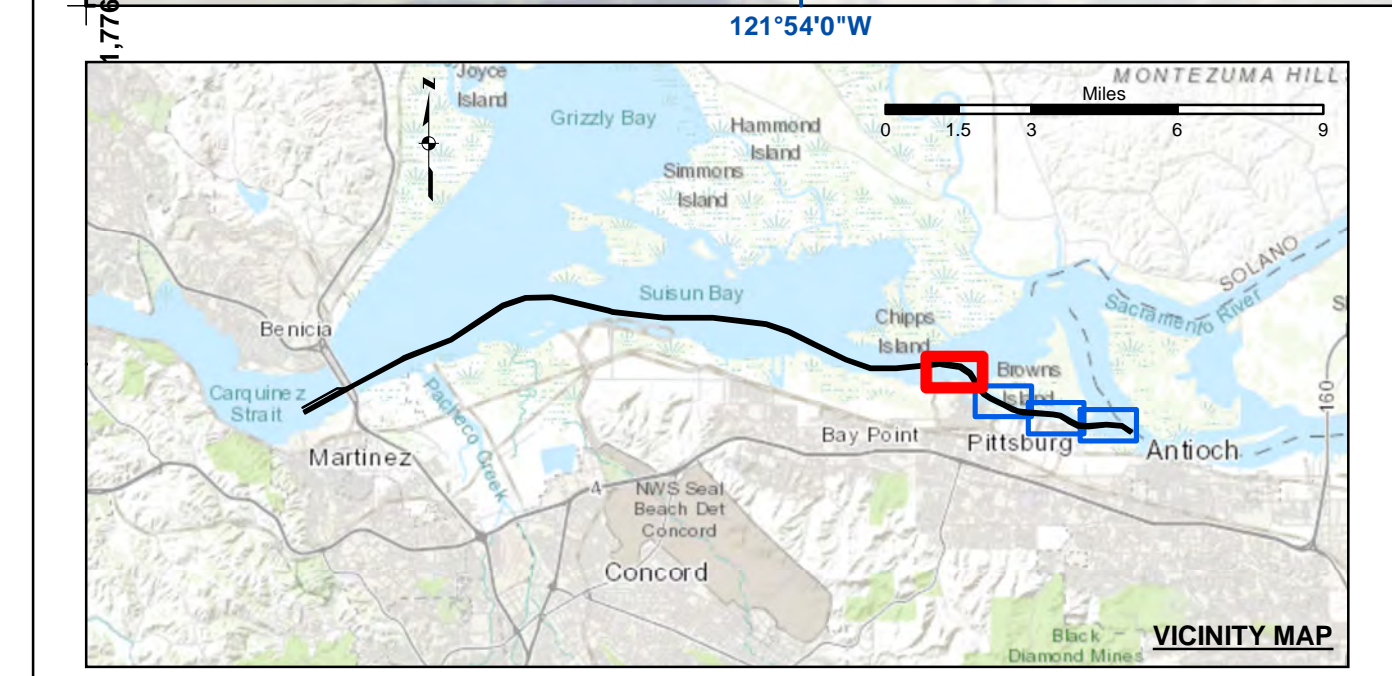
Chart Date:	Oct 02, 2019
Designed by:	PDT
Plotted by:	PDT
Checked by:	PDT
Drawn by:	PDT

CONTRA COSTA COUNTY
SUISUN BAY CHANNEL
NEW YORK SLOUGH
CONDITION SURVEY
25 SEPTEMBER 2019

Sheet Reference Number
1 of 4

Angle Point	Easting	Northing
01	6522251.24	1773544.02
01-A	6522058.94	1773894.77
02	6526638.33	1775949.19
02-A	6525876.51	1775995.5
03	6526814.71	1776043.48
04	6527523.96	1776423.75
05	6532628.85	1779160.81
06	6533058.01	1779418.58
07	6534097.47	1779856.02
08	6538142.48	1781404.93
09	6541140.44	1783407.77
10	6543746.5	1785148.8
11	6546257.51	1786960.74
12	6549181.52	1788980.86
13	6555384.18	1794554.99
14	6555800.55	1794452.57
15	6561371.57	1783800.48
16	6563022.2	1783817.72
17	6566831.6	1783855.42
18	6570705.41	1783336.79
19	6572444.64	1783115.37
20	6574974.06	1782266.36
21	6576022.73	1780780.8
22	6581155.52	1779254.25
23	6583747.56	1778351.3
24	6585358.69	1778330.5
25	6586492.14	1778315.87
26	6590754.42	1778766.38
27	6591256.1	1778845.54
28	6591599.01	1778800.33
29	6593537.77	1778544.71
30	6594899.78	1777747.44
31	6595729.72	1776115.57
32	6596208.21	1775521.7
33	6596646.81	1775104.81
34	6598253.91	1774402.21
35	6599256.55	1773901.57
36	6599759.13	1773700.06
37	6600293.83	1773614.79
38	6603558.93	1773364.99
39	6604408.52	1773200.93
40	6605166.76	1772783.99
41	6605493.42	1772571.98
42	6605866.48	1772482.32
43	6606339.33	1772133.75
44	6607329.74	1772075.69
45	6609314.54	1772257.76
46	661103.07	1772096.82
47	6612148.35	1771412.18

Angle Point	Easting	Northing
48	6611928.32	1771078.24
49	6610969.28	1771713.82
50	6609351.08	1771859.43
51	6607366.28	1771677.36
52	6606234.39	1771743.72
53	6605546.71	1772090.55
54	6605222.02	1772254.31
55	6604935.26	1772457.79
56	6604271.82	1772822.6
57	6603528.42	1772966.17
58	660263.32	1773215.96
59	6599652.22	1773313.41
60	6599077.86	1773543.71
61	6598135.33	1774014.34
62	6596668.12	1774746.95
63	6596938.27	1775223.39
64	6596391.45	1775902.1
65	6594404.78	1777464.31
66	6593391.34	1778160.67
67	6591480.44	1778412.52
68	6591255.17	1778442.21
69	6590791.21	1778418.32
70	6586528.94	177967.81
71	6585297.54	177983.71
72	6583686.58	1778004.51
73	6581002.2	1778959.63
74	657959.51	1780422.27
75	6574841.16	1781941.78
76	6572366.08	1782772.55
77	6570644.56	1782991.71
78	6566611.24	1783505.19
79	6562960.36	1783467.06
80	6561352.98	1783450.27
81	655738.17	1784107.49
82	6555323.24	1784209.4
83	6549136.2	1785728.94
84	6546319.67	1785613
85	6543900.48	1784830.75
86	6541295.27	1783090.31
87	6538304.13	1781092.05
88	6534227.97	1779531.21
89	6533218.72	1779102.27
90	6532770.08	1778896.24
91	6527855.58	1778153.9
92	6526956.17	1775778.89
93	6522395.41	1773280.93



	Federal Navigation Channel		Beacon, General	Contours
	Shoaling Area		Obstruction Point	
	Placement Area		Navigation Buoy	
	Anchorage Area		Navigation Buoy	
	Wreck Area		Shoalest Sounding*	
	Submerged Wreck			
	Angle Point			

NOTES:

HORIZONTAL COORDINATE SYSTEM:
NORTH AMERICAN DATUM OF 1983 (NAD83), PROJECTED TO THE STATE PLANE COORDINATE SYSTEM (SPCS), CALIFORNIA ZONE II. DISTANCE UNITS IN U.S. SURVEY FEET.

VERTICAL DATUM:
SOUNDINGS ARE SHOWN IN FEET AND INDICATE DEPTHS BELOW MEAN LOWER LOW WATER.

THE INFORMATION DEPICTED ON THIS MAP REPRESENTS THE RESULTS OF A SURVEY CONDUCTED ON THE DATE INDICATED AND CAN ONLY BE CONSIDERED TO REPRESENT THE GENERAL CONDITION EXISTING AT THAT TIME.

PLANE GRID, BEARING AND COORDINATES ARE BASED ON THE STATE OF CALIFORNIA COORDINATE SYSTEM, LAMBERT CONFORMAL PROJECTION, ZONE II NAD 83, CALIFORNIA, AS DESCRIBED IN SPECIAL PUBLICATION NO. 235, PUBLISHED BY NATIONAL OCEANIC AND ATMOSPHERIC ADMINISTRATION, U.S. DEPARTMENT OF COMMERCE, 1983.

*SHOALEST SOUNDING PER QUARTER PER EACH

DRAWING NOT TO BE USED FOR NAVIGATION, ONLY CHANNEL CONDITION AT DATE OF SURVEY.

THE LOCATION OF ALL NAVIGATION AIDS ARE BASED ON INFORMATION PROVIDED BY THE U.S. COAST GUARD. BUOY LOCATIONS REPRESENT THE POSITION OF THE SINKER ONLY.

SURVEYED BY THE CORPS OF ENGINEERS.

SOUNDINGS WERE TAKEN BY FATHOMETER AND ARE SHOWN TO THE NEAREST TENTH OF A FOOT. SOUNDINGS ARE BASED ON THE DATUM OF MEAN LOWER LOW WATER AT THE LOCALITY.

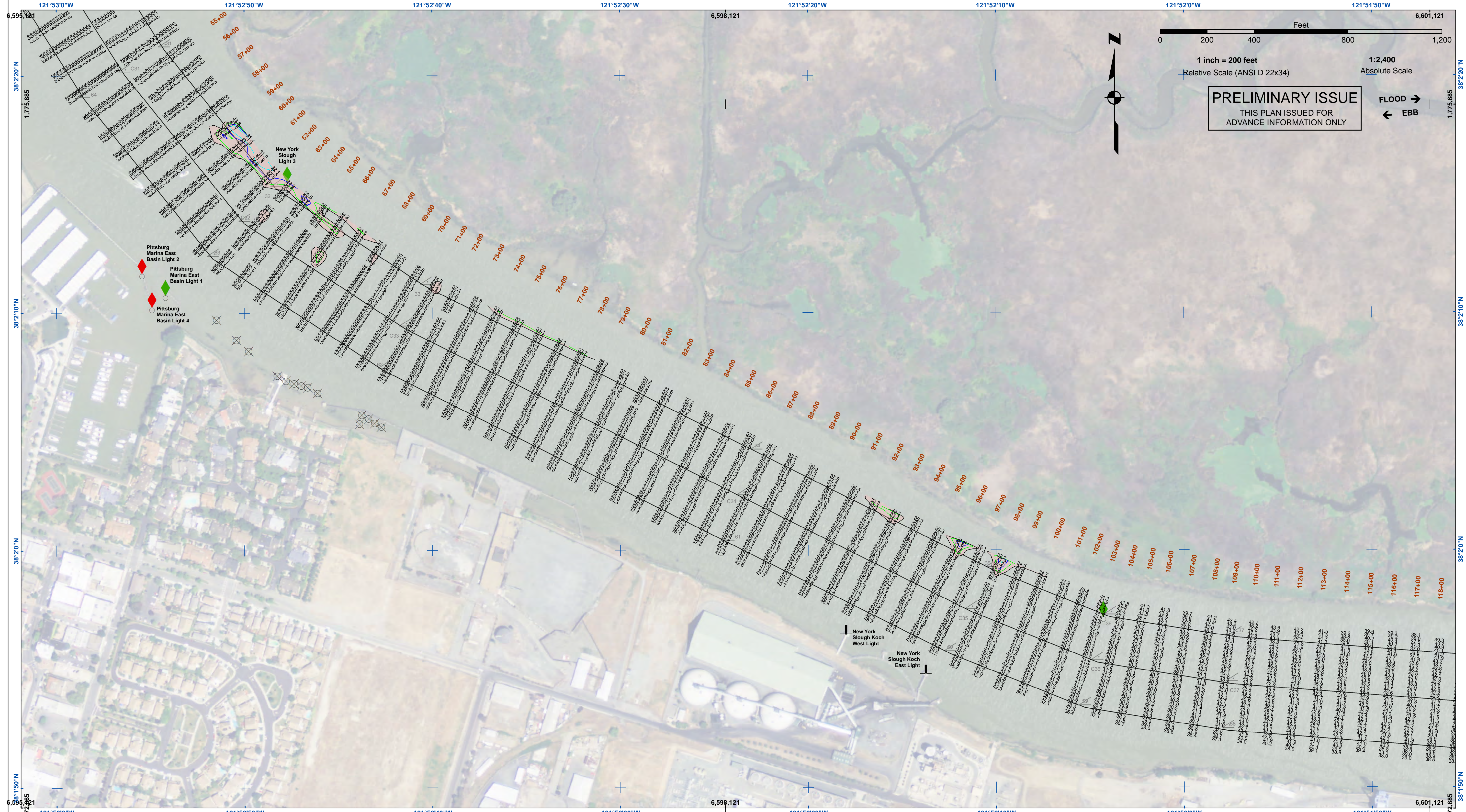
THE PROJECT DEPTH IS 35 FEET.

VERTICAL CONTROL:
SUISUN BAY CHANNEL
(LINES 00+00 TO 160+00) BENCHMARK "9" (1948), USC&GS DISK ELEV 14.875 FT MLLW.
TIDE GAUGE LOCATED AT PORT OF BENICIA DOCK.

(LINES 190+00 TO 500+00) BENCHMARK "5144-P" (1990 RESET 1997), USC&GS DISK, ELEV 11.83 FT MLLW.
TIDE GAUGE LOCATED AT CONCORD NAVAL WEAPONS STATION TUG DOCK, NOAA STATION.

(LINES 660+00 TO 733+45) BENCHMARK "5096-B", USC&GS DISK, ELEV 21.76 FT MLLW.
TIDE GAUGE LOCATED AT DIABLO SERVICE DOCK.

HORIZONTAL GPS CONTROL: COAST GUARD D-BEACON

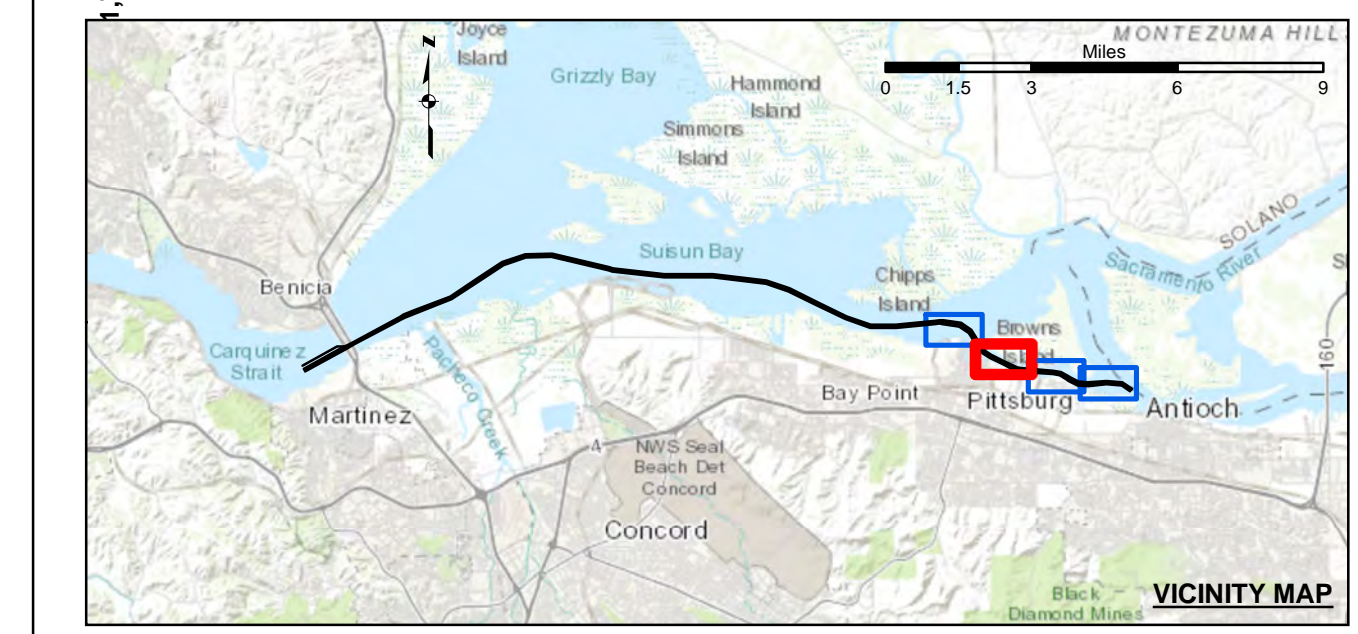


US Army Corps of Engineers
 San Francisco District
 450 Golden Gate Ave
 San Francisco, CA 94102

PRELIMINARY ISSUE
 THIS PLAN ISSUED FOR
 ADVANCE INFORMATION ONLY

FLOOD →
 ← EBB

DISCLAIMER
 The United States Government furnishes this information for the general information of the user. The user is responsible for the results of any application of the data for other than its intended purpose. The user is responsible for the results of any application of the data for other than its intended purpose. The user is responsible for the results of any application of the data for other than its intended purpose. The user is responsible for the results of any application of the data for other than its intended purpose.



- | | | | | |
|--|----------------------------|--|--------------------|-----------------|
| | Federal Navigation Channel | | Beacon, General | Contours |
| | Shoaling Area | | Obstruction Point | |
| | Placement Area | | Navigation Buoy | |
| | Anchorage Area | | Navigation Buoy | |
| | Wreck Area | | Shoalest Sounding* | |
| | Submerged Wreck | | | |
| | Angle Point | | | |

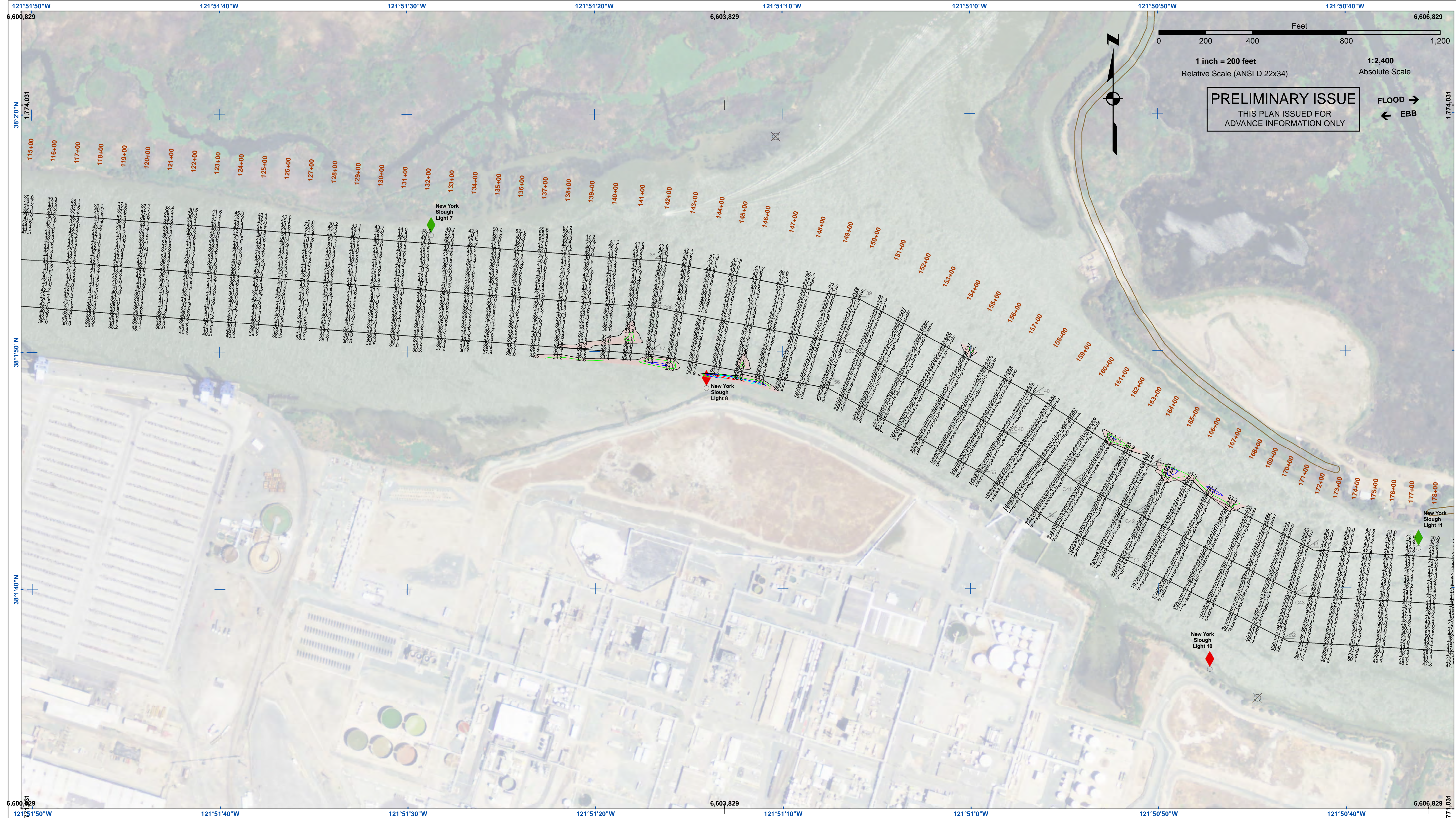
NOTES:
 HORIZONTAL COORDINATE SYSTEM: NORTH AMERICAN DATUM OF 1983 (NAD83), PROJECTED TO THE STATE PLANE COORDINATE SYSTEM (SPCS), CALIFORNIA ZONE II. DISTANCE UNITS IN U.S. SURVEY FEET.
 VERTICAL DATUM: SOUNDINGS ARE SHOWN IN FEET AND INDICATE DEPTHS BELOW MEAN LOWER LOW WATER.
 THE INFORMATION DEPICTED ON THIS MAP REPRESENTS THE RESULTS OF A SURVEY CONDUCTED ON THE DATE INDICATED AND CAN ONLY BE CONSIDERED TO REPRESENT THE GENERAL CONDITION EXISTING AT THAT TIME.
 PLANE GRID, BEARING AND COORDINATES ARE BASED ON THE STATE OF CALIFORNIA COORDINATE SYSTEM, LAMBERT CONFORMAL PROJECTION, ZONE II NAD 83, CALIFORNIA, AS DESCRIBED IN SPECIAL PUBLICATION NO. 235, PUBLISHED BY NATIONAL OCEAN SURVEY, BASE MAPS ARE USDA NAIP 2010.
 *SHOALEST SOUNDING PER QUARTER PER REACH
 DRAWING NOT TO BE USED FOR NAVIGATION, ONLY CHANNEL CONDITION AT DATE OF SURVEY.
 THE LOCATION OF ALL NAVIGATION AIDS ARE BASED ON INFORMATION PROVIDED BY THE U.S. COAST GUARD. BUOY LOCATIONS REPRESENT THE POSITION OF THE SINKER ONLY.

SURVEYED BY THE CORPS OF ENGINEERS.
 SOUNDINGS WERE TAKEN BY FATHOMETER AND ARE SHOWN TO THE NEAREST TENTH OF A FOOT. SOUNDINGS ARE BASED ON THE DATUM OF MEAN LOWER LOW WATER AT THE LOCALITY.
 THE PROJECT DEPTH IS 35 FEET.
 VERTICAL CONTROL: SUISUN BAY CHANNEL (LINES 00+00 TO 160+00) BENCHMARK "9" (1948), USC&GS DISK ELEV 14.875 FT MLLW. TIDE GAUGE LOCATED AT PORT OF BENICIA DOCK.
 (LINES 190+00 TO 500+00) BENCHMARK "5144-P" (1990 RESET 1997), USC&GS DISK ELEV 11.83 FT MLLW.
 (LINES 660+00 TO 733+45) BENCHMARK "5096-B", USC&GS DISK ELEV 21.76 FT MLLW. TIDE GAUGE LOCATED AT DIABLO SERVICE DOCK.
 HORIZONTAL GPS CONTROL: COAST GUARD D-BEACON

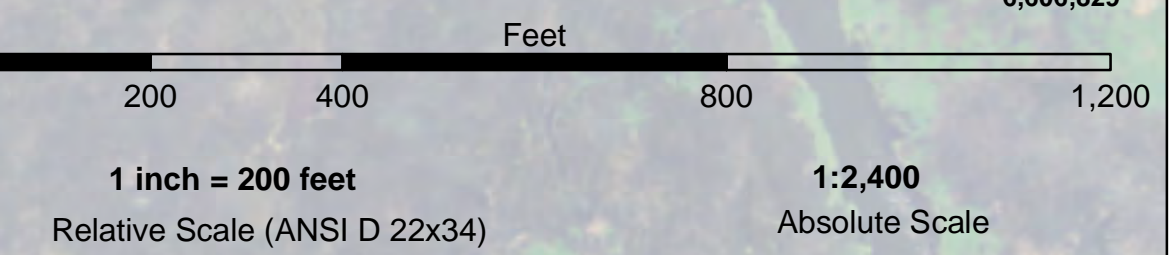
Chart Date:	Oct 02, 2019
Designed by:	PDT
Plotted by:	PDT
Checked by:	PDT
Drawn by:	PDT

CALIFORNIA
 CONTRA COSTA COUNTY
SUISUN BAY CHANNEL
NEW YORK SLOUGH
 CONDITION SURVEY
 25 SEPTEMBER 2019

Sheet Number
 2 of 4



PRELIMINARY ISSUE
THIS PLAN ISSUED FOR
ADVANCE INFORMATION ONLY

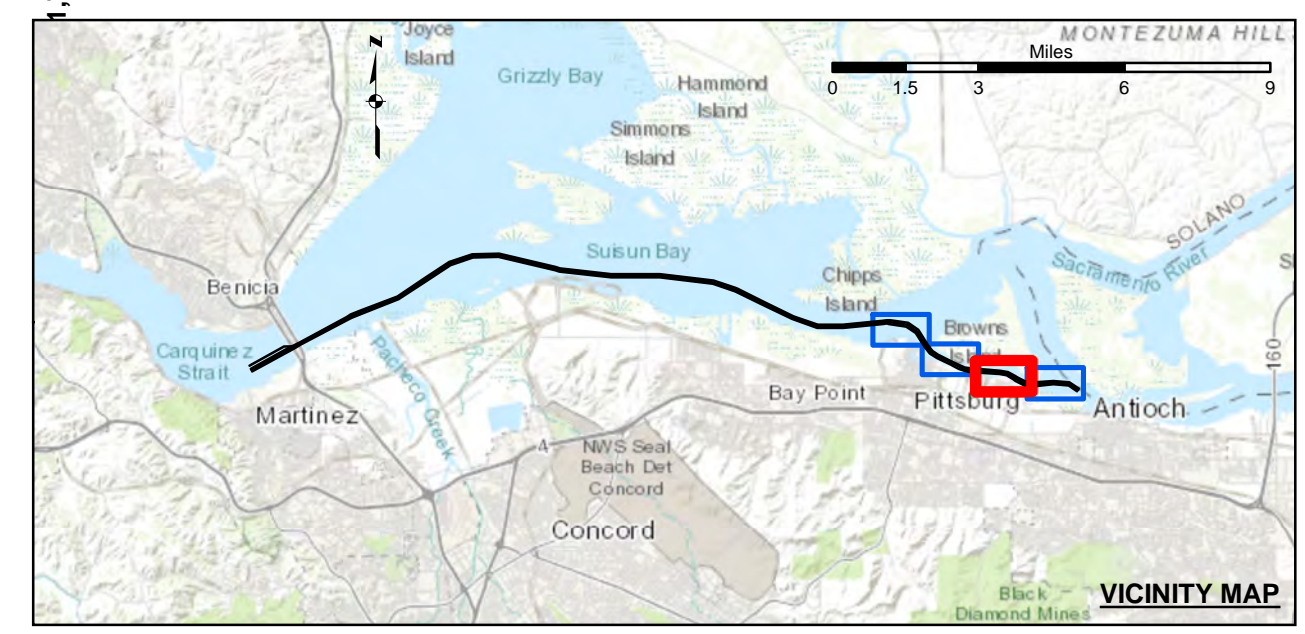


US Army Corps of Engineers
San Francisco District
450 Golden Gate Ave
San Francisco, CA 94102

DISCLAIMER
The United States Government furnishes this information as a service to the user and does not warrant, express or implied, the accuracy, completeness, or reliability of the information. The user is responsible for the results of any application of the data for other than its intended purpose. These data belong to the Government. Therefore the user may not transfer these data to others without also transferring this disclaimer.

Chart Date:	Oct 02, 2019
Designed by:	PDT
Plotted by:	PDT
Checked by:	PDT
Drawn by:	PDT

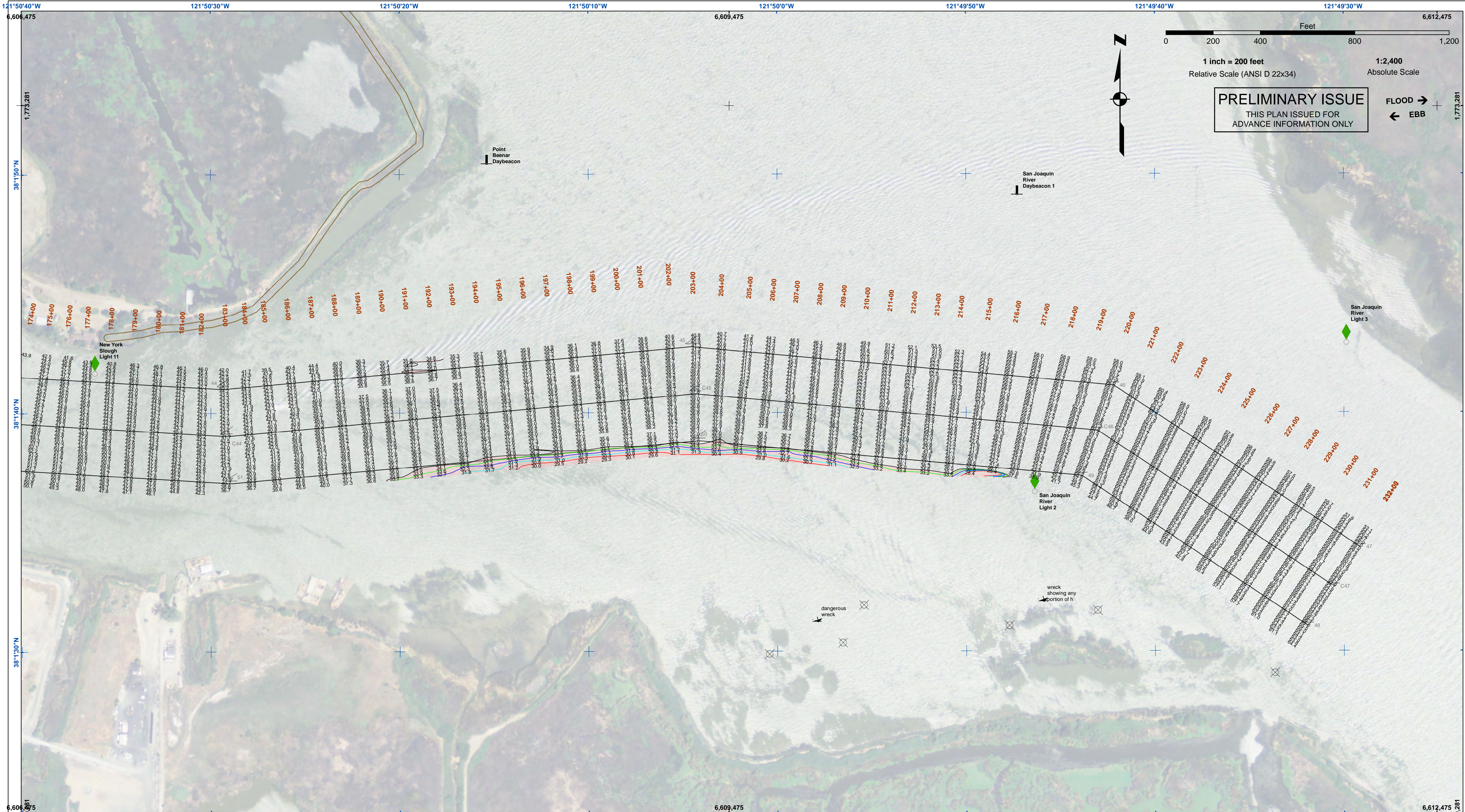
CALIFORNIA
CONTRA COSTA COUNTY
SUISUN BAY CHANNEL
NEW YORK SLOUGH
CONDITION SURVEY
25 SEPTEMBER 2019



- Federal Navigation Channel
 - Shoaling Area
 - Placement Area
 - Anchorage Area
 - Wreck Area
 - Submerged Wreck
 - Angle Point
 - Beacon, General
 - Obstruction Point
 - Navigation Buoy
 - Navigation Buoy
 - Shoalest Sounding*
- Contours**
- 35
 - 34
 - 33
 - 32
 - 31

NOTES:
HORIZONTAL COORDINATE SYSTEM: NORTH AMERICAN DATUM OF 1983 (NAD83), PROJECTED TO THE STATE PLANE COORDINATE SYSTEM (SPCS), CALIFORNIA ZONE II. DISTANCE UNITS IN U.S. SURVEY FEET.
VERTICAL DATUM: SOUNDINGS ARE SHOWN IN FEET AND INDICATE DEPTHS BELOW MEAN LOWER LOW WATER.
THE INFORMATION DEPICTED ON THIS MAP REPRESENTS THE RESULTS OF A SURVEY CONDUCTED ON THE DATE INDICATED AND CAN ONLY BE CONSIDERED TO REPRESENT THE GENERAL CONDITION EXISTING AT THAT TIME.
PLANE GRID, BEARING AND COORDINATES ARE BASED ON THE STATE OF CALIFORNIA COORDINATE SYSTEM, LAMBERT CONFORMAL PROJECTION, ZONE II NAD 83, CALIFORNIA, AS DESCRIBED IN SPECIAL PUBLICATION NO. 235, PUBLISHED BY NATIONAL OCEAN SURVEY. BASE MAPS ARE USDA NAIP 2010.
*SHOALEST SOUNDING PER QUARTER PER REACH
DRAWING NOT TO BE USED FOR NAVIGATION, ONLY CHANNEL CONDITION AT DATE OF SURVEY. THE LOCATION OF ALL NAVIGATION AIDS ARE BASED ON INFORMATION PROVIDED BY THE U.S. COAST GUARD. BUOY LOCATIONS REPRESENT THE POSITION OF THE SINKER ONLY.

SURVEYED BY THE CORPS OF ENGINEERS.
SOUNDINGS WERE TAKEN BY FATHOMETER AND ARE SHOWN TO THE NEAREST TENTH OF A FOOT. SOUNDINGS ARE BASED ON THE DATUM OF MEAN LOWER LOW WATER AT THE LOCALITY.
THE PROJECT DEPTH IS 35 FEET.
VERTICAL CONTROL: SUISUN BAY CHANNEL (LINES 00+00 TO 160+00) BENCHMARK "9" (1948), USC&GS DISK ELEV 14.875 FT MLLW. TIDE GAUGE LOCATED AT PORT OF BENICIA DOCK. (LINES 190+00 TO 500+00) BENCHMARK "5144-P" (1990 RESET 1997), USC&GS DISK, ELEV 11.83 FT MLLW. TIDE GAUGE LOCATED AT CONCORD NAVAL WEAPONS STATION TUG DOCK, NOAA STATION. (LINES 660+00 TO 733+45) BENCHMARK "5096-B", USC&GS DISK, ELEV 21.76 FT MLLW. TIDE GAUGE LOCATED AT DIABLO SERVICE DOCK.
HORIZONTAL GPS CONTROL: COAST GUARD D-BEACON



US Army Corps of Engineers
 San Francisco District
 450 Golden Gate Ave
 San Francisco, CA 94102

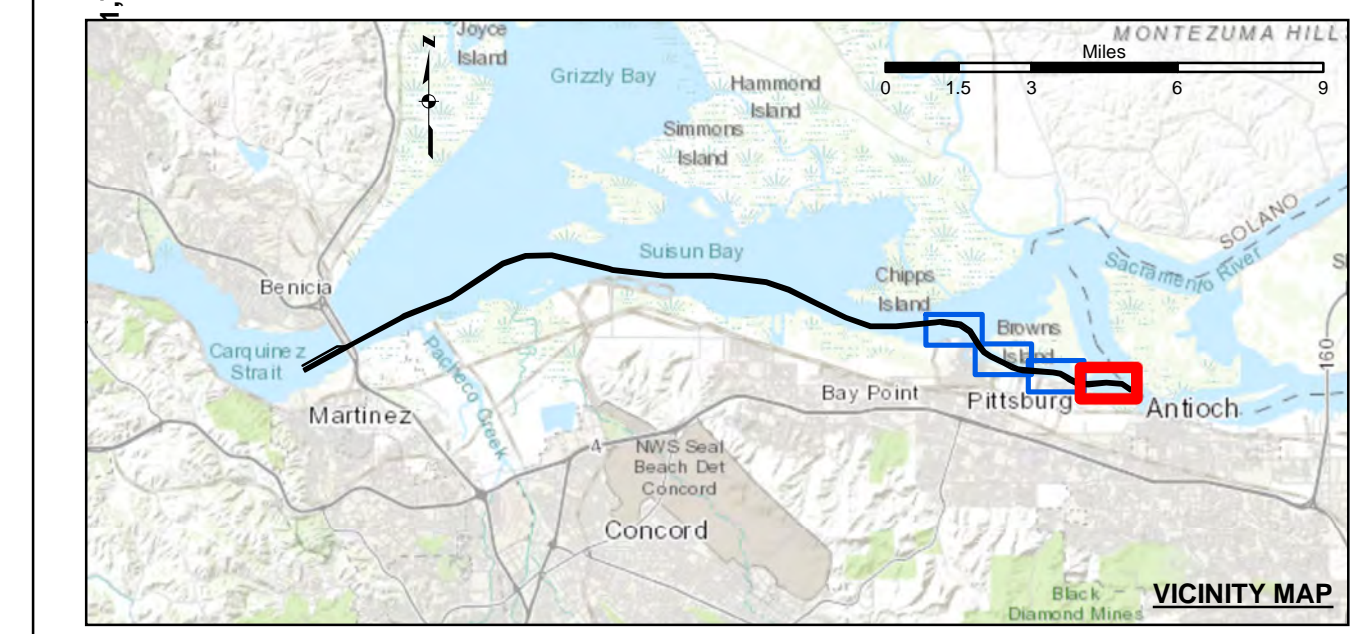
PRELIMINARY ISSUE
 THIS PLAN ISSUED FOR
 ADVANCE INFORMATION ONLY

DISCLAIMER
 The United States Government furnishes the data represented on this map for informational purposes only. It is not intended for navigation. The user is responsible for the results of any application of the data for other than its intended purpose. The user is responsible for the results of any application of the data for other than its intended purpose. The user is responsible for the results of any application of the data for other than its intended purpose.

Chart Date:	Oct 02, 2019
Designed by:	PDT
Plotted by:	PDT
Checked by:	PDT
Drawn by:	PDT

CALIFORNIA
 CONTRA COSTA COUNTY
SUISUN BAY CHANNEL
NEW YORK SLOUGH
 CONDITION SURVEY
 25 SEPTEMBER 2019

Sheet Number
 4 of 4



Federal Navigation Channel	Beacon, General	Contours
Shoaling Area	Obstruction Point	
Placement Area	Navigation Buoy	
Anchorage Area	Navigation Buoy	
Wreck Area	Shoalest Sounding*	
Submerged Wreck		-35
Angle Point		-34
		-33
		-32
		-31

NOTES:
 HORIZONTAL COORDINATE SYSTEM:
 NORTH AMERICAN DATUM OF 1983 (NAD83), PROJECTED TO THE STATE PLANE COORDINATE SYSTEM (SPCS), CALIFORNIA ZONE II. DISTANCE UNITS IN U.S. SURVEY FEET.
 VERTICAL DATUM:
 SOUNDINGS ARE SHOWN IN FEET AND INDICATE DEPTHS BELOW MEAN LOWER LOW WATER.
 THE INFORMATION DEPICTED ON THIS MAP REPRESENTS THE RESULTS OF A SURVEY CONDUCTED ON THE DATE INDICATED AND CAN ONLY BE CONSIDERED TO REPRESENT THE GENERAL CONDITION EXISTING AT THAT TIME.
 PLANE GRID, BEARING AND COORDINATES ARE BASED ON THE STATE OF CALIFORNIA COORDINATE SYSTEM, LAMBERT CONFORMAL PROJECTION, ZONE II NAD 83, CALIFORNIA, AS DESCRIBED IN SPECIAL PUBLICATION NO. 235, PUBLISHED BY NATIONAL OCEAN SURVEY, BASE MAPS ARE USDA NAIP 2010.
 *SHOALEST SOUNDING PER QUARTER PER REACH
 DRAWING NOT TO BE USED FOR NAVIGATION, ONLY CHANNEL CONDITION AT DATE OF SURVEY.
 THE LOCATION OF ALL NAVIGATION AIDS ARE BASED ON INFORMATION PROVIDED BY THE U.S. COAST GUARD. BUOY LOCATIONS REPRESENT THE POSITION OF THE SINKER ONLY.

SURVEYED BY THE CORPS OF ENGINEERS.
 SOUNDINGS WERE TAKEN BY FATHOMETER AND ARE SHOWN TO THE NEAREST TENTH OF A FOOT. SOUNDINGS ARE BASED ON THE DATUM OF MEAN LOWER LOW WATER AT THE LOCALITY.
 THE PROJECT DEPTH IS 35 FEET.
 VERTICAL CONTROL:
 SUISUN BAY CHANNEL
 (LINES 00+00 TO 160+00) BENCHMARK "9" (1948), USC&GS DISK ELEV 14.875 FT MLLW.
 TIDE GAUGE LOCATED AT PORT OF BENICIA DOCK.
 (LINES 190+00 TO 500+00) BENCHMARK "5144-P" (1990 RESET 1997), USC&GS DISK ELEV 11.83 FT MLLW.
 TIDE GAUGE LOCATED AT CONCORD NAVAL WEAPONS STATION TUG DOCK, NOAA STATION.
 (LINES 660+00 TO 733+45) BENCHMARK "5096-B", USC&GS DISK ELEV 21.76 FT MLLW.
 TIDE GAUGE LOCATED AT DIABLO SERVICE DOCK.
 HORIZONTAL GPS CONTROL: COAST GUARD D-BEACON