

	Federal Navigation Channel		Beacon, General	Contours	
	Shoaling Area		Obstruction Point		
	Placement Area		Navigation Buoy		
	Anchorage Area		Navigation Buoy		
	Wreck Area		Shoalest Sounding*		
	Submerged Wreck				-35
	Angle Point				-34
					-33
					-32
					-31

NOTES:

HORIZONTAL COORDINATE SYSTEM:
NORTH AMERICAN DATUM OF 1983 (NAD83), PROJECTED TO THE STATE PLANE COORDINATE SYSTEM (SPCS), CALIFORNIA ZONE II. DISTANCE UNITS IN U.S. SURVEY FEET.

VERTICAL DATUM:
SOUNDINGS ARE SHOWN IN FEET AND INDICATE DEPTHS BELOW MEAN LOWER LOW WATER.

THE INFORMATION DEPICTED ON THIS MAP REPRESENTS THE RESULTS OF A SURVEY CONDUCTED ON THE DATE INDICATED AND CAN ONLY BE CONSIDERED TO REPRESENT THE GENERAL CONDITION EXISTING AT THAT TIME.

PLANE GRID, BEARING AND COORDINATES ARE BASED ON THE STATE OF CALIFORNIA COORDINATE SYSTEM, LAMBERT CONFORMAL PROJECTION, ZONE II NAD 83, CALIFORNIA, AS DESCRIBED IN SPECIAL PUBLICATION NO. 235, PUBLISHED BY NATIONAL OCEAN SURVEY, BASE MAPS ARE USDA NAIP 2010.

*SHOALEST SOUNDING PER QUARTER PER REACH

DRAWING NOT TO BE USED FOR NAVIGATION, ONLY CHANNEL CONDITION AT DATE OF SURVEY. THE LOCATION OF ALL NAVIGATION AIDS ARE BASED ON INFORMATION PROVIDED BY THE U.S. COAST GUARD. BUOY LOCATIONS REPRESENT THE POSITION OF THE SINKER ONLY.

SURVEYED BY THE CORPS OF ENGINEERS.

SOUNDINGS WERE TAKEN BY FATHOMETER AND ARE SHOWN TO THE NEAREST TENTH OF A FOOT. SOUNDINGS ARE BASED ON THE DATUM OF MEAN LOWER LOW WATER AT THE LOCALITY.

THE PROJECT DEPTH IS 35 FEET.

VERTICAL CONTROL:
SUISUN BAY CHANNEL
(LINES 00+00 TO 160+00) BENCHMARK "9" (1948), USC&GS DISK ELEV 14.875 FT MLLW.
TIDE GAUGE LOCATED AT PORT OF BENICIA DOCK.
(LINES 150+00 TO 500+00) BENCHMARK "5144-P" (1990 RESET 1997), USC&GS DISK ELEV 11.83 FT MLLW.
TIDE GAUGE LOCATED AT CONCORD NAVAL WEAPONS STATION TUG DOCK, NOAA STATION.
(LINES 660+00 TO 733+45) BENCHMARK "5096-B", USC&GS DISK ELEV 21.76 FT MLLW.
TIDE GAUGE LOCATED AT DIABLO SERVICE DOCK.

HORIZONTAL GPS CONTROL: COAST GUARD D-BEACON

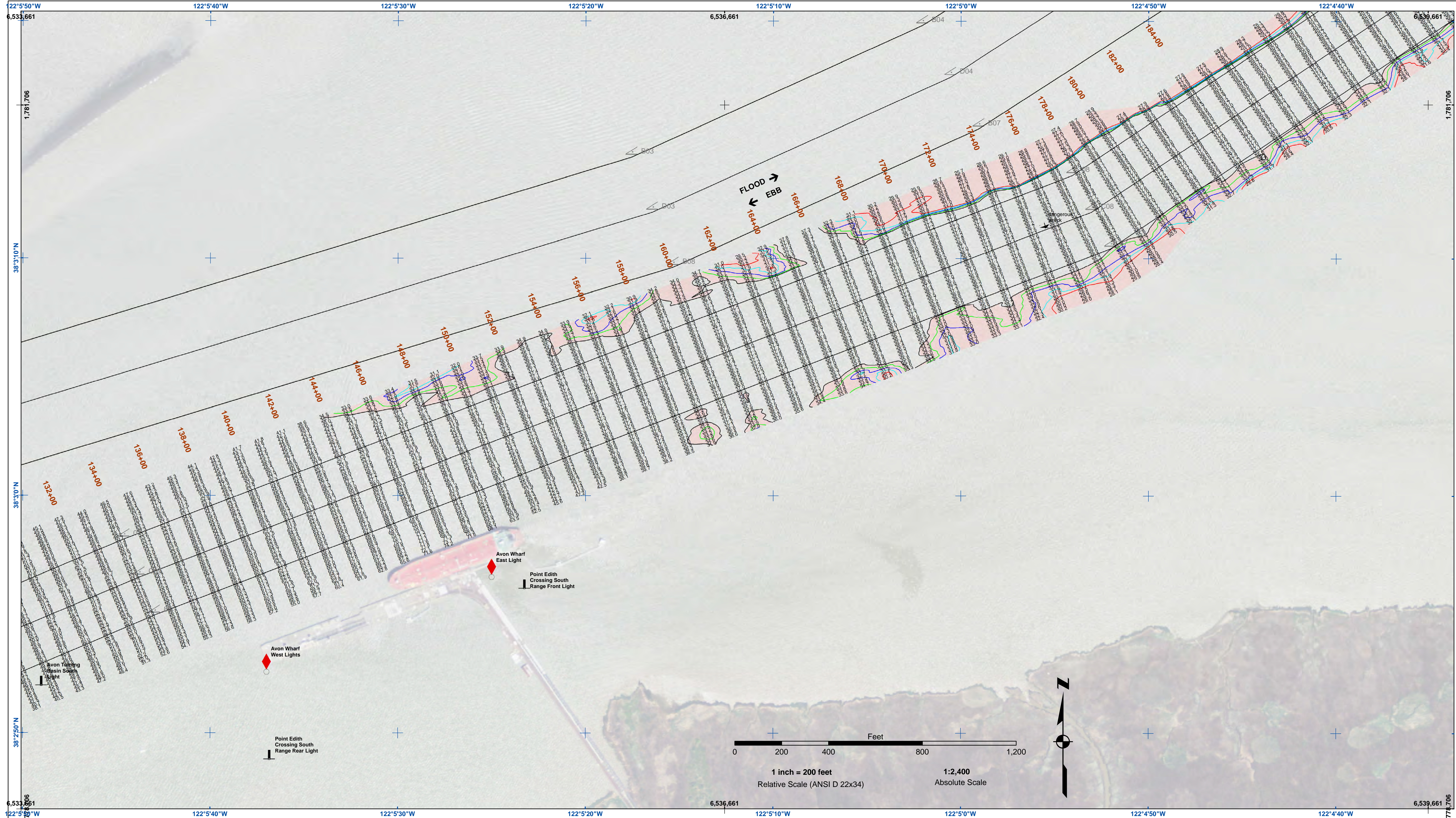


DISCLAIMER
The United States Government furnishes this information as a service to the public and does not warrant, express or implied, the accuracy, completeness, reliability, usability, or timeliness of the information. The user is responsible for the results of any application of the data for other than its intended purpose. The data is provided "as is" and the user assumes all liability for its use. The data is not to be used for any purpose other than that for which it was provided. The recipient may not transfer these data to others without also transferring this disclaimer.

PREPARED UNDER THE DIRECTION OF TRAVIS J. RAYFIELD LT COLONEL, C.E. DISTRICT ENGINEER	Surveyed By:	Chart Date:
Subject: Hydro Survey Team Leader	Plotted By:	Oct 19, 2018
Recommended: Chief, Hydro Survey Section	Checked By:	Designed by:
Approved: Chief, Construction Branch	PDT	Drawn by:
	PDT	PDT

CALIFORNIA
CONTRA COSTA COUNTY
SUISUN BAY CHANNEL
POST-DREDGE SURVEY
REACHES 3A-E
17 OCTOBER 2018

Sheet Reference Number
2 of 12

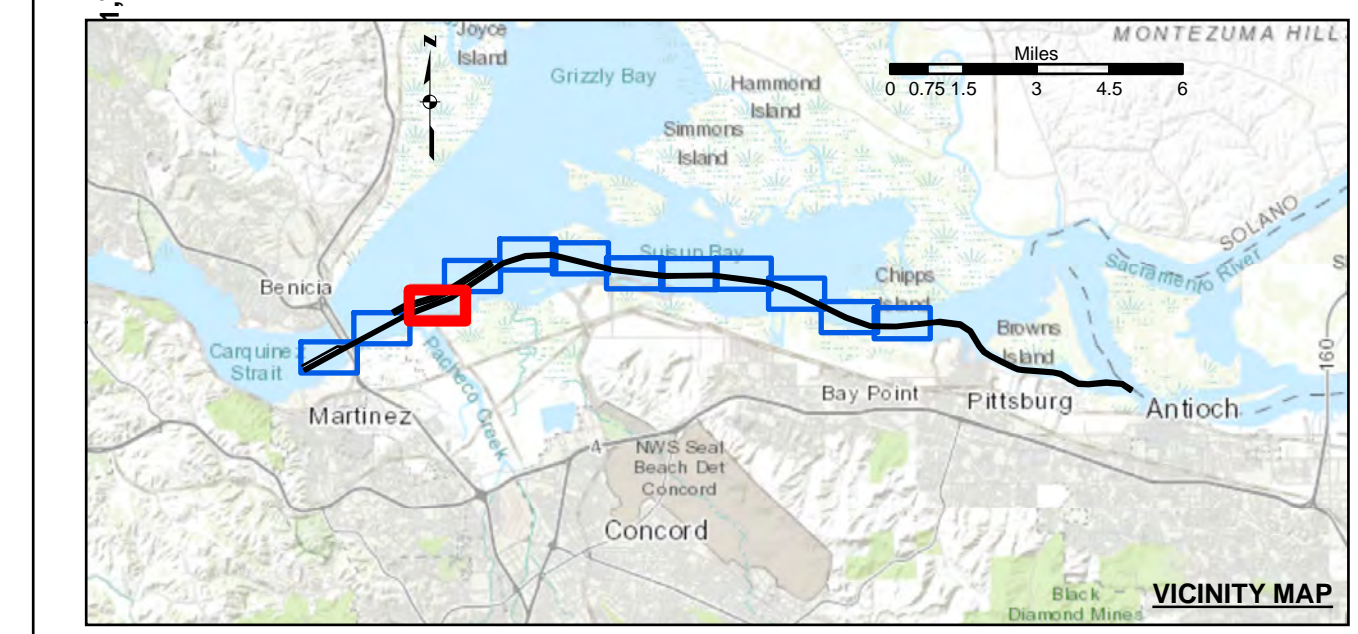


US Army Corps of Engineers
 San Francisco District
 1455 Market Street
 San Francisco, CA 94103

DISCLAIMER
 The United States Government furnishes this information as a public service. It is not intended to be used for navigation. The user is responsible for the results of any application of this data for other than its intended purpose. The user is responsible for the results of any application of this data for other than its intended purpose. The user is responsible for the results of any application of this data for other than its intended purpose.

Prepared Under the Direction of	Chart Date:
LT COLONEL J. RAYFIELD	Oct 19, 2018
Subproject	Designed by:
Hydro Survey Team Leader	PDT
Recommended by:	Checked by:
Chief, Hydro Survey Section	PDT
Approved by:	Drawn by:
Chief, Construction Branch	PDT

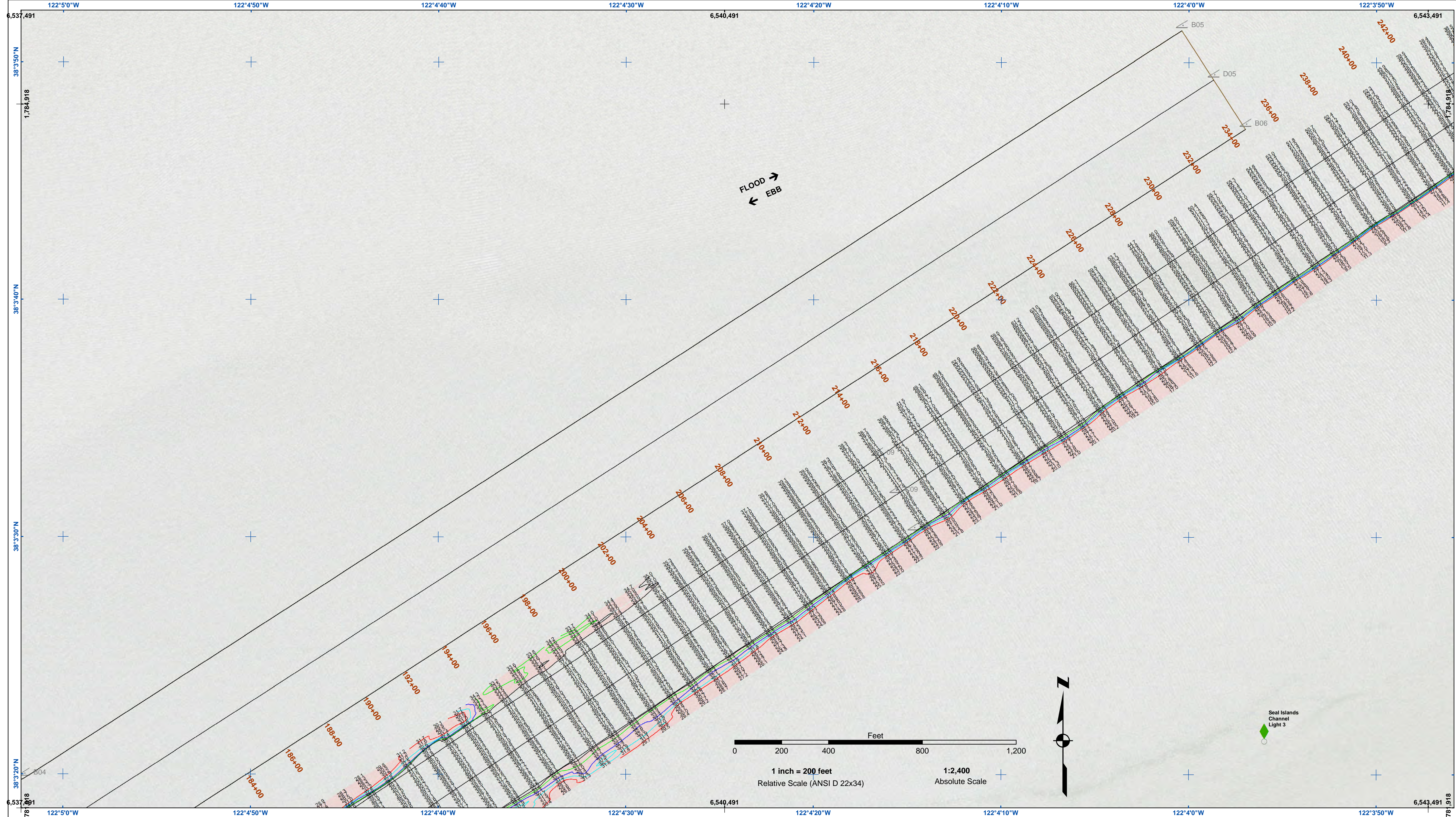
CALIFORNIA
 CONTRA COSTA COUNTY
SUISUN BAY CHANNEL
 POST-DREDGE SURVEY
 REACHES 3A-E
 17 OCTOBER 2018



Federal Navigation Channel	Beacon, General	Contours
Shoaling Area	Obstruction Point	
Placement Area	Navigation Buoy	
Anchorage Area	Navigation Buoy	
Wreck Area	Shoalest Sounding*	
Submerged Wreck		-35
Angle Point		-34
		-33
		-32
		-31

NOTES:
 HORIZONTAL COORDINATE SYSTEM: NORTH AMERICAN DATUM OF 1983 (NAD83), PROJECTED TO THE STATE PLANE COORDINATE SYSTEM (SPCS), CALIFORNIA ZONE II. DISTANCE UNITS IN U.S. SURVEY FEET.
 VERTICAL DATUM: SOUNDINGS ARE SHOWN IN FEET AND INDICATE DEPTHS BELOW MEAN LOWER LOW WATER.
 THE INFORMATION DEPICTED ON THIS MAP REPRESENTS THE RESULTS OF A SURVEY CONDUCTED ON THE DATE INDICATED AND CAN ONLY BE CONSIDERED TO REPRESENT THE GENERAL CONDITION EXISTING AT THAT TIME.
 PLANE GRID, BEARING AND COORDINATES ARE BASED ON THE STATE OF CALIFORNIA COORDINATE SYSTEM, LAMBERT CONFORMAL PROJECTION, ZONE II NAD 83, CALIFORNIA, AS DESCRIBED IN SPECIAL PUBLICATION NO. 235, PUBLISHED BY NATIONAL OCEAN SURVEY. BASE MAPS ARE USDA NAIP 2010.
 *SHOALEST SOUNDING PER QUARTER PER REACH
 DRAWING NOT TO BE USED FOR NAVIGATION, ONLY CHANNEL CONDITION AT DATE OF SURVEY. THE LOCATION OF ALL NAVIGATION AIDS ARE BASED ON INFORMATION PROVIDED BY THE U.S. COAST GUARD. BUOY LOCATIONS REPRESENT THE POSITION OF THE SINKER ONLY.

SURVEYED BY THE CORPS OF ENGINEERS.
 SOUNDINGS WERE TAKEN BY FATHOMETER AND ARE SHOWN TO THE NEAREST TENTH OF A FOOT. SOUNDINGS ARE BASED ON THE DATUM OF MEAN LOWER LOW WATER AT THE LOCALITY.
 THE PROJECT DEPTH IS 35 FEET.
 VERTICAL CONTROL: SUISUN BAY CHANNEL (LINES 00+00 TO 160+00) BENCHMARK "9" (1948), USC&GS DISK ELEV 14.875 FT MLLW. TIDE GAUGE LOCATED AT PORT OF BENICIA DOCK. (LINES 150+00 TO 500+00) BENCHMARK "5144-P" (1990 RESET 1997), USC&GS DISK ELEV 11.83 FT MLLW. TIDE GAUGE LOCATED AT CONCORD NAVAL WEAPONS STATION TUG DOCK, NOAA STATION. (LINES 660+00 TO 733+45) BENCHMARK "5096-B", USC&GS DISK ELEV 21.76 FT MLLW. TIDE GAUGE LOCATED AT DIABLO SERVICE DOCK.
 HORIZONTAL GPS CONTROL: COAST GUARD D-BEACON



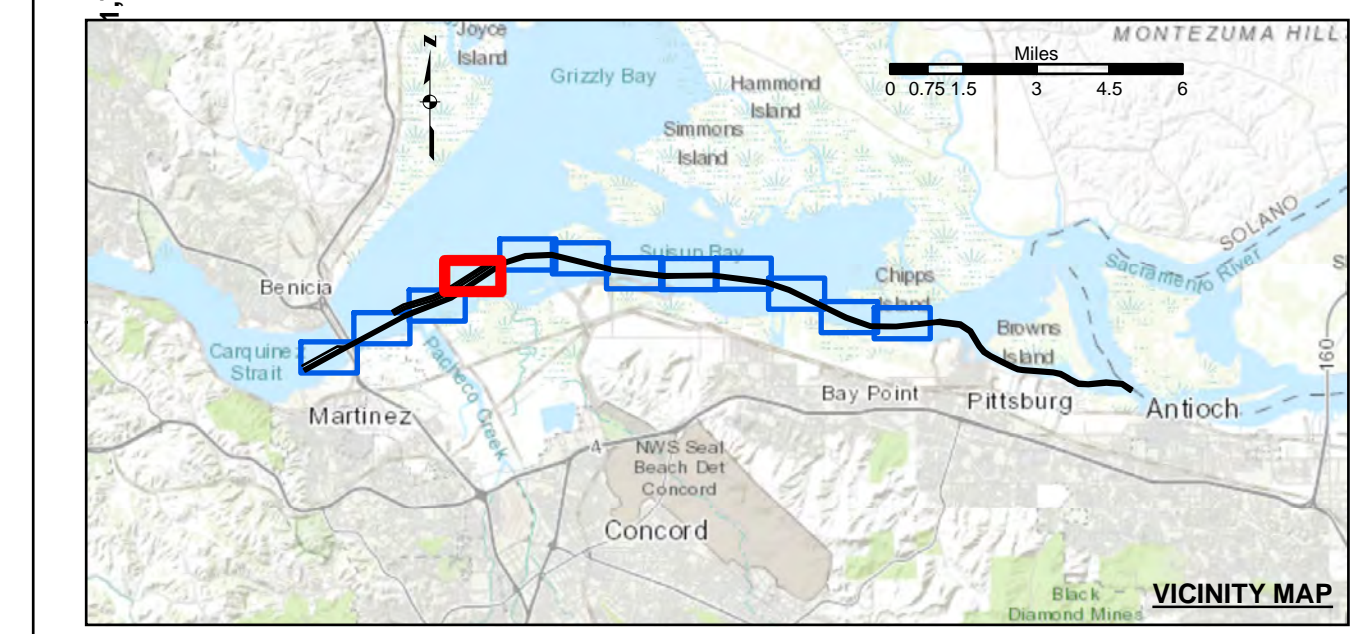
US Army Corps of Engineers
 San Francisco District
 1455 Market Street
 San Francisco, CA 94103

DISCLAIMER
 The United States Government furnishes this information as a service to the public and does not warrant, express or implied, the accuracy, completeness, or reliability of the information. The user is responsible for the results of any application of the data for other than its intended purpose. The data represents the results of data collected by the United States Government and is not intended for use in any other project. The user is responsible for the results of any application of the data for other than its intended purpose. The data represents the results of data collected by the United States Government and is not intended for use in any other project. The user is responsible for the results of any application of the data for other than its intended purpose.

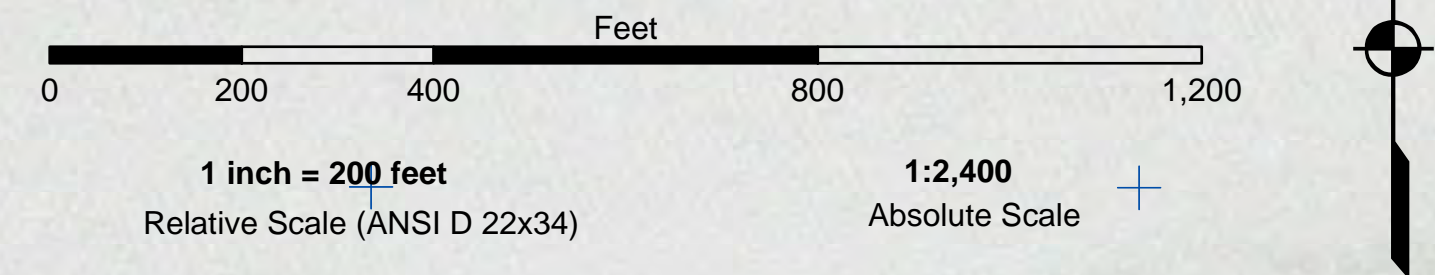
Prepared Under the Direction of	LT COLONEL C.E. DISTRICT ENGINEER	Surveyed By	PDT	Chart Date	Oct 19, 2018
Designed By	PDT	Plotted By	PDT	Designed by	
Checked By	PDT	Checked By	PDT	Drawn by	PDT
Approved	Chief, Construction Branch				

CALIFORNIA
 CONTRA COSTA COUNTY
SUISUN BAY CHANNEL
 POST-DREDGE SURVEY
 REACHES 3A-E
 17 OCTOBER 2018

Sheet Reference Number
 4 of 12

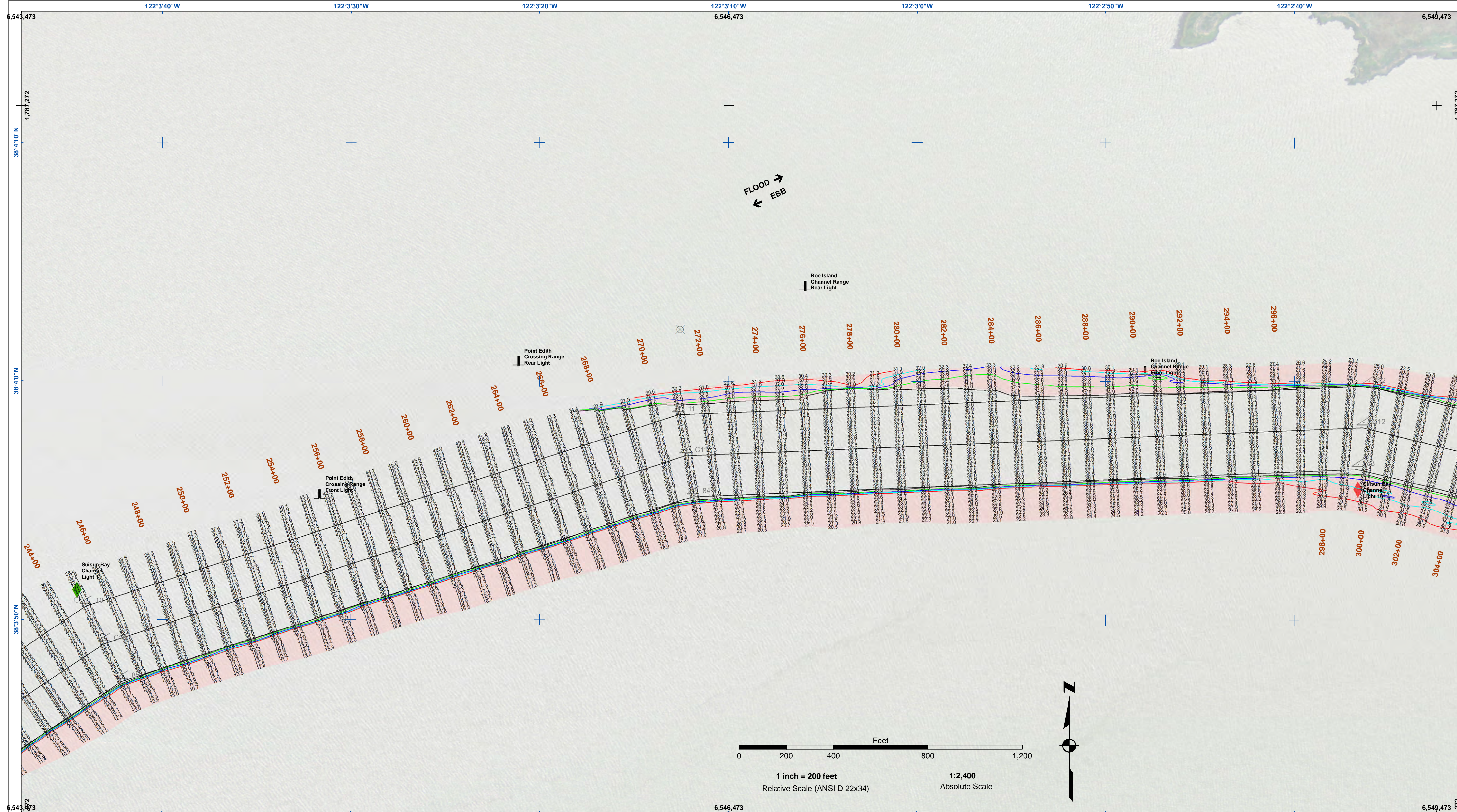


Federal Navigation Channel	Beacon, General	Contours
Shoaling Area	Obstruction Point	
Placement Area	Navigation Buoy	
Anchorage Area	Navigation Buoy	
Wreck Area	Shoalest Sounding*	
Submerged Wreck		-35
Angle Point		-34
		-33
		-32
		-31



NOTES:
 HORIZONTAL COORDINATE SYSTEM: NORTH AMERICAN DATUM OF 1983 (NAD83), PROJECTED TO THE STATE PLANE COORDINATE SYSTEM (SPCS), CALIFORNIA ZONE II. DISTANCE UNITS IN U.S. SURVEY FEET.
 VERTICAL DATUM: SOUNDINGS ARE SHOWN IN FEET AND INDICATE DEPTHS BELOW MEAN LOWER LOW WATER.
 THE INFORMATION DEPICTED ON THIS MAP REPRESENTS THE RESULTS OF A SURVEY CONDUCTED ON THE DATE INDICATED AND CAN ONLY BE CONSIDERED TO REPRESENT THE GENERAL CONDITION EXISTING AT THAT TIME.
 PLANE GRID, BEARING AND COORDINATES ARE BASED ON THE STATE OF CALIFORNIA COORDINATE SYSTEM, LAMBERT CONFORMAL PROJECTION, ZONE II NAD 83, CALIFORNIA, AS DESCRIBED IN SPECIAL PUBLICATION NO. 235, PUBLISHED BY NATIONAL OCEAN SURVEY, BASE MAPS ARE USDA NAIP 2010.
 *SHOALEST SOUNDING PER QUARTER PER REACH
 DRAWING NOT TO BE USED FOR NAVIGATION, ONLY CHANNEL CONDITION AT DATE OF SURVEY. THE LOCATION OF ALL NAVIGATION AIDS ARE BASED ON INFORMATION PROVIDED BY THE U.S. COAST GUARD. BUOY LOCATIONS REPRESENT THE POSITION OF THE SINKER ONLY.

SURVEYED BY THE CORPS OF ENGINEERS.
 SOUNDINGS WERE TAKEN BY FATHOMETER AND ARE SHOWN TO THE NEAREST TENTH OF A FOOT. SOUNDINGS ARE BASED ON THE DATUM OF MEAN LOWER LOW WATER AT THE LOCALITY.
 THE PROJECT DEPTH IS 35 FEET.
 VERTICAL CONTROL: SUISUN BAY CHANNEL (LINES 00+00 TO 160+00) BENCHMARK "9" (1948), USC&GS DISK ELEV 14.875 FT MLLW. TIDE GAUGE LOCATED AT PORT OF BENICIA DOCK. (LINES 150+00 TO 500+00) BENCHMARK "5144-P" (1990 RESET 1997), USC&GS DISK ELEV 11.83 FT MLLW. TIDE GAUGE LOCATED AT CONCORD NAVAL WEAPONS STATION TUG DOCK, NOAA STATION. (LINES 660+00 TO 733+45) BENCHMARK "5096-B", USC&GS DISK ELEV 21.76 FT MLLW. TIDE GAUGE LOCATED AT DIABLO SERVICE DOCK.
 HORIZONTAL GPS CONTROL: COAST GUARD D-BEACON



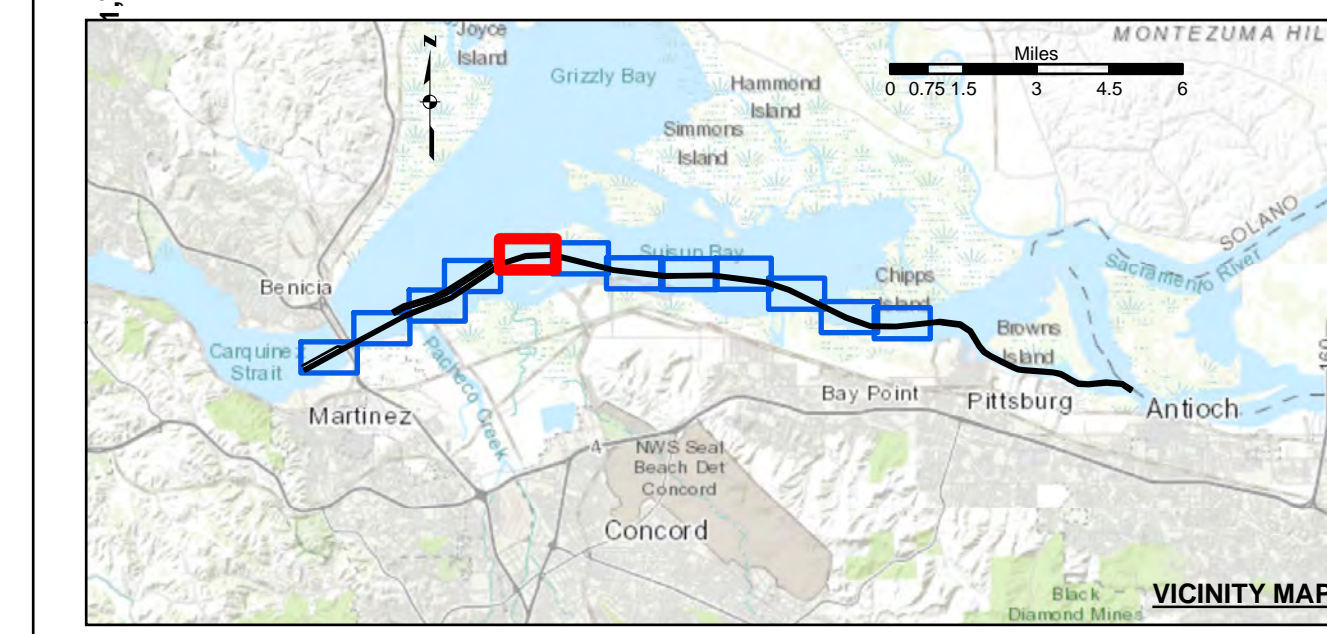
US Army Corps of Engineers
 San Francisco District
 1455 Market Street
 San Francisco, CA 94103

DISCLAIMER
 The United States Government furnishes this information as a public service. It is not intended to be used for any purpose other than that intended by the Government. The user is responsible for the results of any application of the data for other than its intended purpose. The user is responsible for the results of any application of the data for other than its intended purpose. The user is responsible for the results of any application of the data for other than its intended purpose.

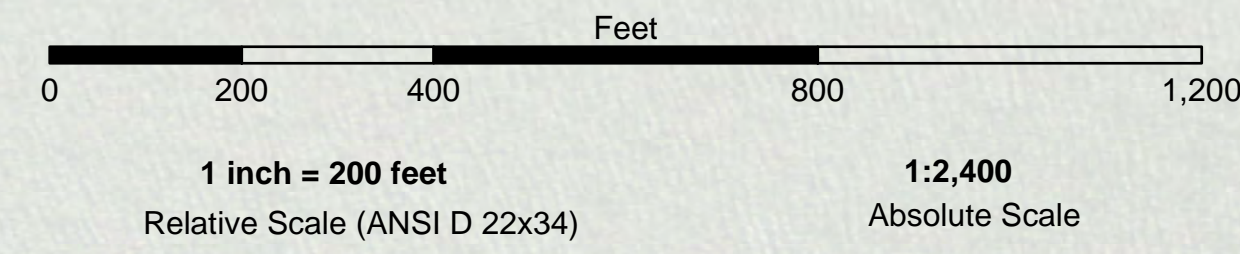
Prepared Under the Direction of	Chart Date:
LT COLONEL J. RAYFIELD	Oct 19, 2018
Subproject	Designed by:
Hydro Survey Team Leader	PDT
Recommended by:	Checked by:
Chief, Hydro Survey Section	PDT
Approved by:	Drawn by:
Chief, Construction Branch	PDT

CALIFORNIA
 CONTRA COSTA COUNTY
SUISUN BAY CHANNEL
 POST-DREDGE SURVEY
 REACHES 3A-E
 17 OCTOBER 2018

Sheet Reference Number
 5 of 12

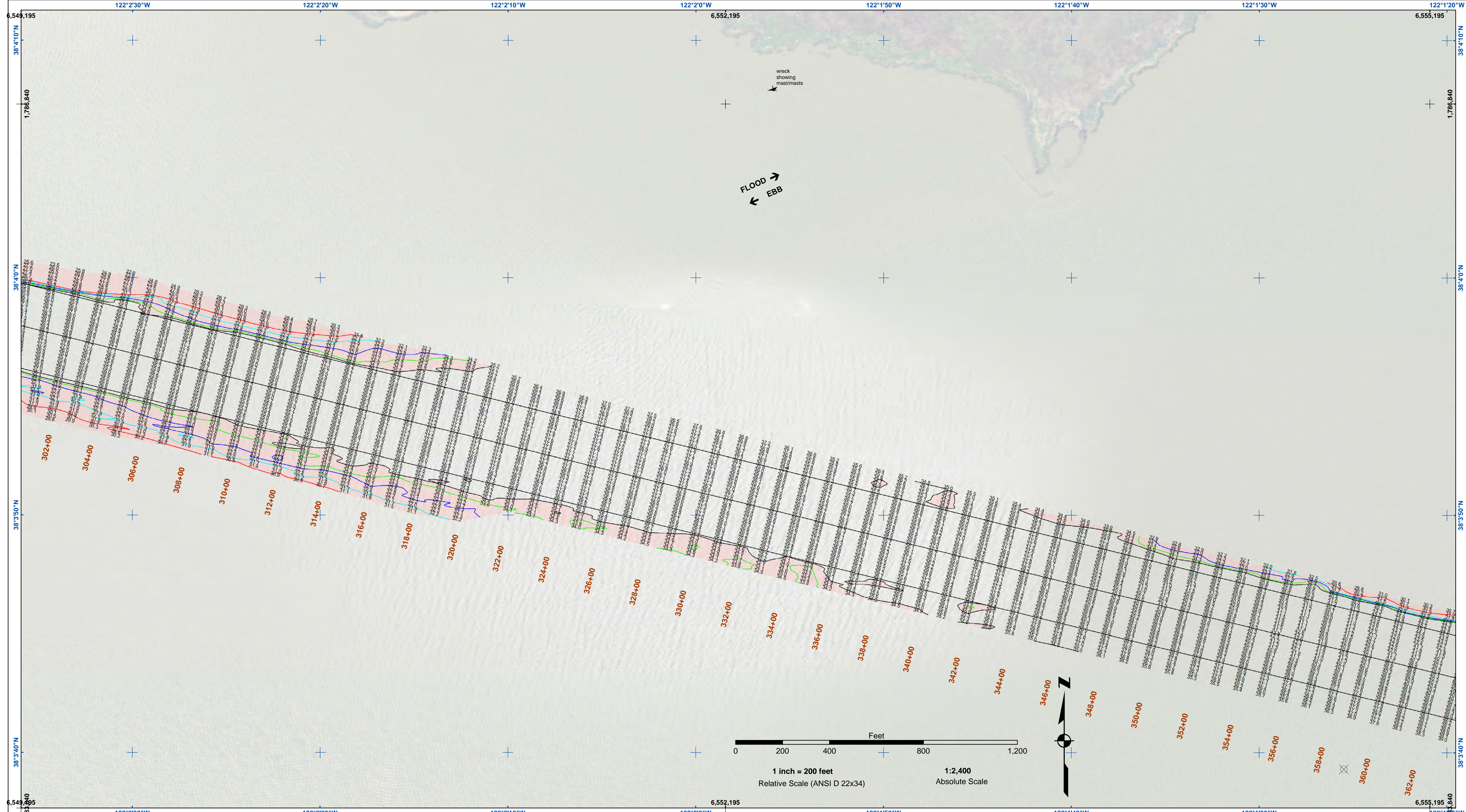


Federal Navigation Channel	Beacon, General	Contours
Shoaling Area	Obstruction Point	
Placement Area	Navigation Buoy	
Anchorage Area	Navigation Buoy	
Wreck Area	Shoalest Sounding*	
Submerged Wreck		-35
Angle Point		-34
		-33
		-32
		-31



NOTES:
 HORIZONTAL COORDINATE SYSTEM:
 NORTH AMERICAN DATUM OF 1983 (NAD83), PROJECTED TO THE STATE PLANE COORDINATE SYSTEM (SPCS), CALIFORNIA ZONE II. DISTANCE UNITS IN U.S. SURVEY FEET.
 VERTICAL DATUM:
 SOUNDINGS ARE SHOWN IN FEET AND INDICATE DEPTHS BELOW MEAN LOWER LOW WATER.
 THE INFORMATION DEPICTED ON THIS MAP REPRESENTS THE RESULTS OF A SURVEY CONDUCTED ON THE DATE INDICATED AND CAN ONLY BE CONSIDERED TO REPRESENT THE GENERAL CONDITION EXISTING AT THAT TIME.
 PLANE GRID, BEARING AND COORDINATES ARE BASED ON THE STATE OF CALIFORNIA COORDINATE SYSTEM, LAMBERT CONFORMAL PROJECTION, ZONE II NAD 83, CALIFORNIA, AS DESCRIBED IN SPECIAL PUBLICATION NO. 235, PUBLISHED BY NATIONAL OCEAN SURVEY, BASE MAPS ARE USDA NAIP 2010.
 *SHOALEST SOUNDING PER QUARTER PER REACH
 DRAWING NOT TO BE USED FOR NAVIGATION, ONLY CHANNEL CONDITION AT DATE OF SURVEY.
 THE LOCATION OF ALL NAVIGATION AIDS ARE BASED ON INFORMATION PROVIDED BY THE U.S. COAST GUARD. BUOY LOCATIONS REPRESENT THE POSITION OF THE SINKER ONLY.

SURVEYED BY THE CORPS OF ENGINEERS.
 SOUNDINGS WERE TAKEN BY FATHOMETER AND ARE SHOWN TO THE NEAREST TENTH OF A FOOT. SOUNDINGS ARE BASED ON THE DATUM OF MEAN LOWER LOW WATER AT THE LOCALITY.
 THE PROJECT DEPTH IS 35 FEET.
 VERTICAL CONTROL:
 SUISUN BAY CHANNEL
 (LINES 00+00 TO 160+00) BENCHMARK "9" (1948), USC&GS DISK ELEV 14.875 FT MLLW.
 TIDE GAUGE LOCATED AT PORT OF BENICIA DOCK.
 (LINES 150+00 TO 500+00) BENCHMARK "5144-P" (1990 RESET 1997), USC&GS DISK ELEV 11.83 FT MLLW.
 TIDE GAUGE LOCATED AT CONCORD NAVAL WEAPONS STATION TUG DOCK, NOAA STATION.
 (LINES 660+00 TO 733+45) BENCHMARK "5096-B", USC&GS DISK ELEV 21.76 FT MLLW.
 TIDE GAUGE LOCATED AT DIABLO SERVICE DOCK.
 HORIZONTAL GPS CONTROL: COAST GUARD D-BEACON

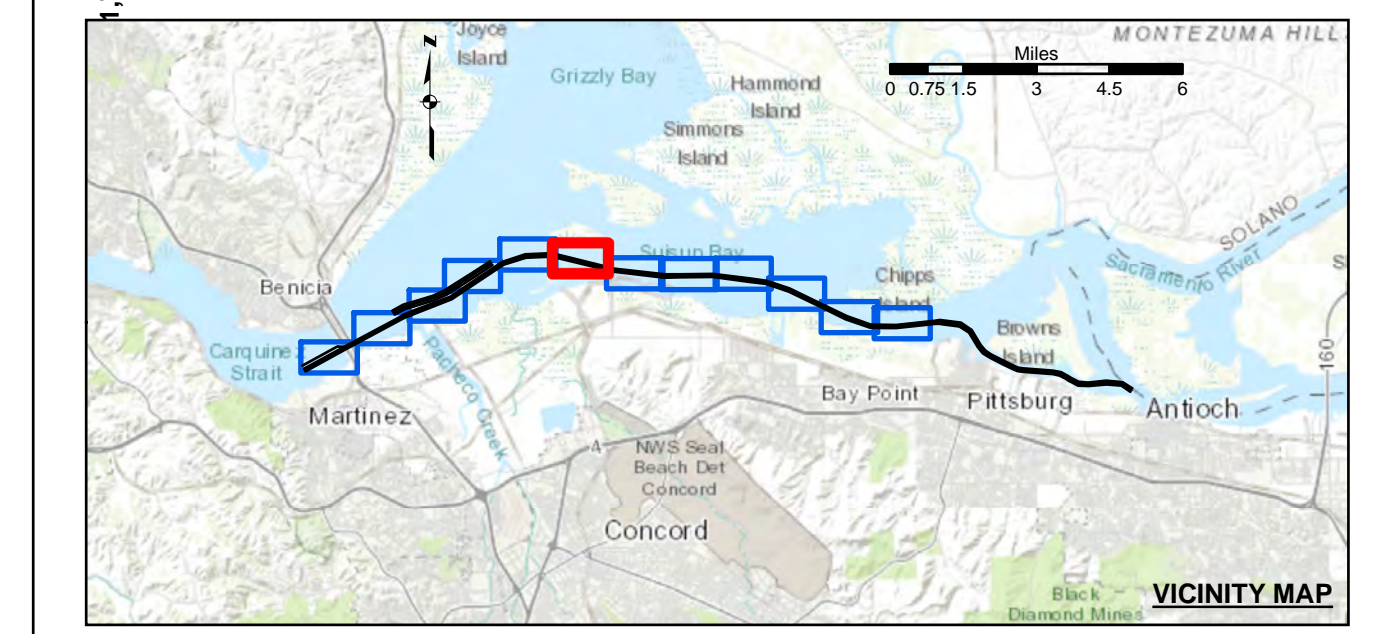


US Army Corps of Engineers
 San Francisco District
 1455 Market Street
 San Francisco, CA 94103

DISCLAIMER
 The United States Government furnishes this information as a public service. It is not intended to be used for any purpose other than that for which it was prepared. The user is responsible for the results of any application of the data for other than its intended purpose. The user is responsible for the results of any application of the data for other than its intended purpose. The user is responsible for the results of any application of the data for other than its intended purpose.

Prepared Under the Direction of	Chart Date:
LT COLONEL J. RAYFIELD	Oct 19, 2018
Submittal:	Designed by:
Hydro Survey Team Leader	PDT
Recommended:	Checked by:
Chief, Hydro Survey Section	PDT
Approved:	Drawn by:
Chief, Construction Branch	PDT

CALIFORNIA
 CONTRA COSTA COUNTY
SUISUN BAY CHANNEL
 POST-DREDGE SURVEY
 REACHES 3A-E
 17 OCTOBER 2018

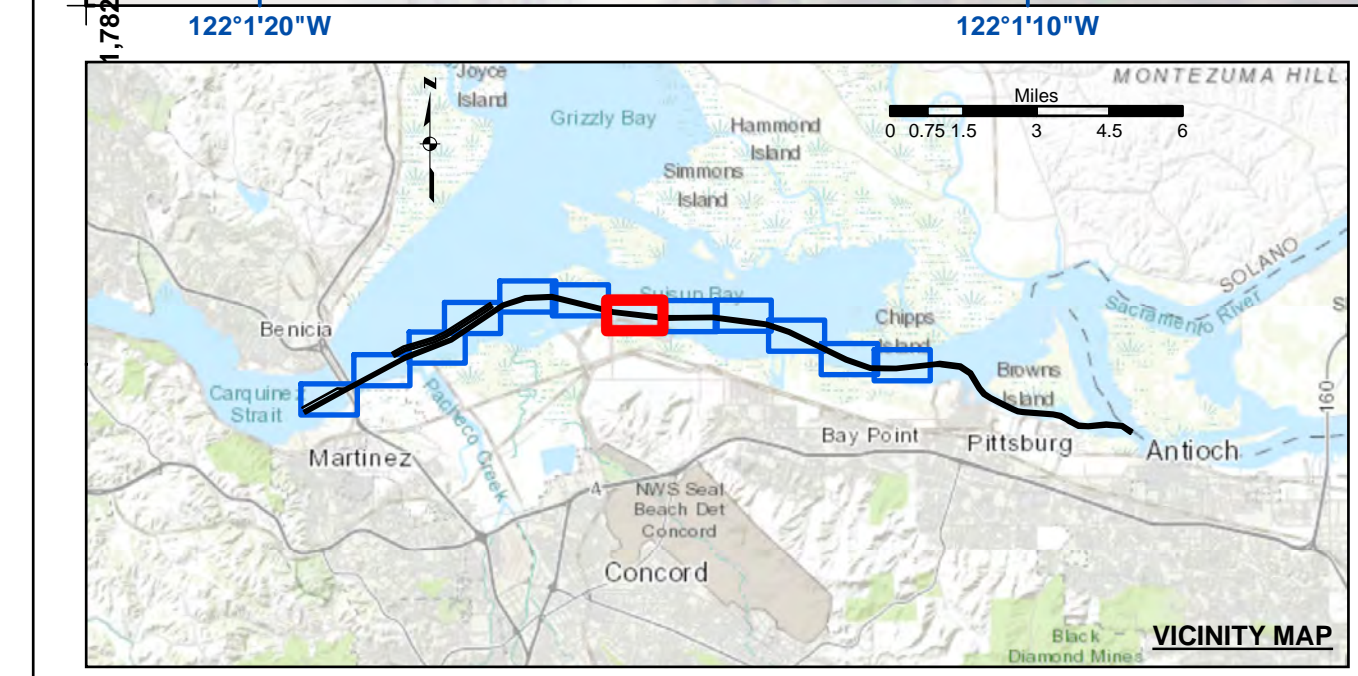
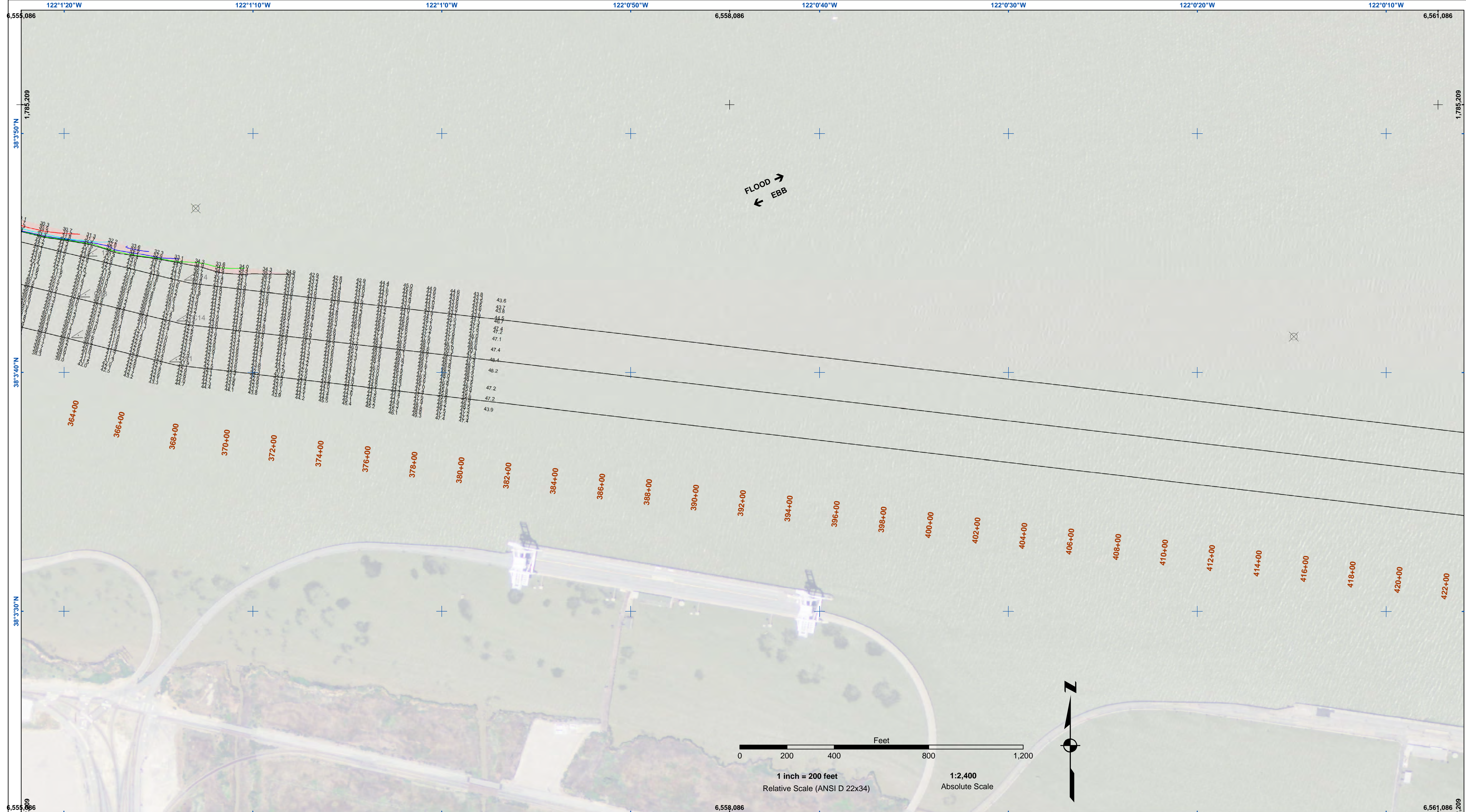


Federal Navigation Channel	Beacon, General	Contours
Shoaling Area	Obstruction Point	-35
Placement Area	Navigation Buoy	-34
Anchorage Area	Navigation Buoy	-33
Wreck Area	Shoalest Sounding*	-32
Submerged Wreck		-31
Angle Point		

NOTES:
 HORIZONTAL COORDINATE SYSTEM:
 NORTH AMERICAN DATUM OF 1983 (NAD83), PROJECTED TO THE STATE PLANE COORDINATE SYSTEM (SPCS), CALIFORNIA ZONE II. DISTANCE UNITS IN U.S. SURVEY FEET.
 VERTICAL DATUM:
 SOUNDINGS ARE SHOWN IN FEET AND INDICATE DEPTHS BELOW MEAN LOWER LOW WATER.
 THE INFORMATION DEPICTED ON THIS MAP REPRESENTS THE RESULTS OF A SURVEY CONDUCTED ON THE DATE INDICATED AND CAN ONLY BE CONSIDERED TO REPRESENT THE GENERAL CONDITION EXISTING AT THAT TIME.
 PLANE GRID, BEARING AND COORDINATES ARE BASED ON THE STATE OF CALIFORNIA COORDINATE SYSTEM, LAMBERT CONFORMAL PROJECTION, ZONE II NAD 83, CALIFORNIA, AS DESCRIBED IN SPECIAL PUBLICATION NO. 235, PUBLISHED BY NATIONAL OCEAN SURVEY, BASE MAPS ARE USDA NAIP 2010.
 *SHOALEST SOUNDING PER QUARTER PER REACH
 DRAWING NOT TO BE USED FOR NAVIGATION, ONLY CHANNEL CONDITION AT DATE OF SURVEY.
 THE LOCATION OF ALL NAVIGATION AIDS ARE BASED ON INFORMATION PROVIDED BY THE U.S. COAST GUARD. BUOY LOCATIONS REPRESENT THE POSITION OF THE SINKER ONLY.

SURVEYED BY THE CORPS OF ENGINEERS.
 SOUNDINGS WERE TAKEN BY FATHOMETER AND ARE SHOWN TO THE NEAREST TENTH OF A FOOT. SOUNDINGS ARE BASED ON THE DATUM OF MEAN LOWER LOW WATER AT THE LOCALITY.
 THE PROJECT DEPTH IS 35 FEET.
 VERTICAL CONTROL:
 SUISUN BAY CHANNEL
 (LINES 00+00 TO 160+00) BENCHMARK "9" (1948), USC&GS DISK ELEV 14.875 FT MLLW.
 TIDE GAUGE LOCATED AT PORT OF BENICIA DOCK.
 (LINES 150+00 TO 500+00) BENCHMARK "5144-P" (1990 RESET 1997), USC&GS DISK ELEV 11.83 FT MLLW.
 TIDE GAUGE LOCATED AT CONCORD NAVAL WEAPONS STATION TUG DOCK, NOAA STATION.
 (LINES 660+00 TO 733+45) BENCHMARK "5096-B", USC&GS DISK ELEV 21.76 FT MLLW.
 TIDE GAUGE LOCATED AT DIABLO SERVICE DOCK.
 HORIZONTAL GPS CONTROL: COAST GUARD D-BEACON

Sheet Reference Number
 6 of 12



	Federal Navigation Channel		Beacon, General	Contours	
	Shoaling Area		Obstruction Point		
	Placement Area		Navigation Buoy		
	Anchorage Area		Navigation Buoy		
	Wreck Area		Shoalest Sounding*		
	Submerged Wreck				-35
	Angle Point				-34
					-33
					-32
					-31

NOTES:
 HORIZONTAL COORDINATE SYSTEM: NORTH AMERICAN DATUM OF 1983 (NAD83), PROJECTED TO THE STATE PLANE COORDINATE SYSTEM (SPCS), CALIFORNIA ZONE II. DISTANCE UNITS IN U.S. SURVEY FEET.
 VERTICAL DATUM: SOUNDINGS ARE SHOWN IN FEET AND INDICATE DEPTHS BELOW MEAN LOWER LOW WATER.
 THE INFORMATION DEPICTED ON THIS MAP REPRESENTS THE RESULTS OF A SURVEY CONDUCTED ON THE DATE INDICATED AND CAN ONLY BE CONSIDERED TO REPRESENT THE GENERAL CONDITION EXISTING AT THAT TIME.
 PLANE GRID, BEARING AND COORDINATES ARE BASED ON THE STATE OF CALIFORNIA COORDINATE SYSTEM, LAMBERT CONFORMAL PROJECTION, ZONE II NAD 83, CALIFORNIA, AS DESCRIBED IN SPECIAL PUBLICATION NO. 235, PUBLISHED BY NATIONAL OCEAN SURVEY, BASE MAPS ARE USDA NAIP 2010.
 *SHOALEST SOUNDING PER QUARTER PER REACH
 DRAWING NOT TO BE USED FOR NAVIGATION, ONLY CHANNEL CONDITION AT DATE OF SURVEY.
 THE LOCATION OF ALL NAVIGATION AIDS ARE BASED ON INFORMATION PROVIDED BY THE U.S. COAST GUARD. BUOY LOCATIONS REPRESENT THE POSITION OF THE SINKER ONLY.

SURVEYED BY THE CORPS OF ENGINEERS.
 SOUNDINGS WERE TAKEN BY FATHOMETER AND ARE SHOWN TO THE NEAREST TENTH OF A FOOT. SOUNDINGS ARE BASED ON THE DATUM OF MEAN LOWER LOW WATER AT THE LOCALITY.
 THE PROJECT DEPTH IS 35 FEET.
 VERTICAL CONTROL: SUISUN BAY CHANNEL (LINES 00+00 TO 160+00) BENCHMARK '9' (1948), USC&GS DISK ELEV 14.875 FT MLLW, TIDE GAUGE LOCATED AT PORT OF BENICIA DOCK. (LINES 150+00 TO 500+00) BENCHMARK '5144-P' (1990 RESET 1997), (LINES 500+00 TO 860+00) BENCHMARK '5144-P' (1990 RESET 1997), USC&GS DISK, ELEV 11.83 FT MLLW, TIDE GAUGE LOCATED AT CONCORD NAVAL WEAPONS STATION TUG DOCK, NOAA STATION. (LINES 860+00 TO 733+45) BENCHMARK '5096-B', USC&GS DISK, ELEV 21.76 FT MLLW, TIDE GAUGE LOCATED AT DIABLO SERVICE DOCK.
 HORIZONTAL GPS CONTROL: COAST GUARD D-BEACON



DISCLAIMER
 The United States Government furnishes this information as a public service. It is not intended to be used for any purpose other than that for which it was prepared. The user is responsible for the results of any application of the data for other than its intended purpose. The user is responsible for the results of any application of the data for other than its intended purpose. The user is responsible for the results of any application of the data for other than its intended purpose.

Prepared Under the Direction of TRAVIS J. RAYFIELD LT Colonel, C.E., District Engineer	Chart Date: Oct 19, 2018
Subproject: Hydro Survey Team Leader	Designed by: PDT
Recommended by: Chief, Hydro Survey Section	Plotted by: PDT
Approved by: Chief, Construction Branch	Checked by: PDT
	Drawn by: PDT

CALIFORNIA
SUISUN BAY CHANNEL
 POST-DREDGE SURVEY
 REACHES 3A-E
 17 OCTOBER 2018

Sheet Reference Number
 7 of 12