

	Federal Navigation Channel		Beacon, General	Contours	
	Shoaling Area		Obstruction Point		
	Placement Area		Navigation Buoy		
	Anchorage Area		Navigation Buoy		
	Wreck Area		Shoalest Sounding*		
	Submerged Wreck				-35
	Angle Point				-34
					-33
					-32
					-31

NOTES:

HORIZONTAL COORDINATE SYSTEM:
NORTH AMERICAN DATUM OF 1983 (NAD83), PROJECTED TO THE STATE PLANE COORDINATE SYSTEM (SPCS), CALIFORNIA ZONE II. DISTANCE UNITS IN U.S. SURVEY FEET.

VERTICAL DATUM:
SOUNDINGS ARE SHOWN IN FEET AND INDICATE DEPTHS BELOW MEAN LOWER LOW WATER.

THE INFORMATION DEPICTED ON THIS MAP REPRESENTS THE RESULTS OF A SURVEY CONDUCTED ON THE DATE INDICATED AND CAN ONLY BE CONSIDERED TO REPRESENT THE GENERAL CONDITION EXISTING AT THAT TIME.

PLANE GRID, BEARING AND COORDINATES ARE BASED ON THE STATE OF CALIFORNIA COORDINATE SYSTEM, LAMBERT CONFORMAL PROJECTION, ZONE II NAD 83, CALIFORNIA, AS DESCRIBED IN SPECIAL PUBLICATION NO. 235, PUBLISHED BY NATIONAL OCEAN SURVEY.

BASE MAPS ARE USDA NAIP 2010.

*SHOALEST SOUNDING PER QUARTER PER REACH

DRAWING NOT TO BE USED FOR NAVIGATION, ONLY CHANNEL CONDITION AT DATE OF SURVEY.

THE LOCATION OF ALL NAVIGATION AIDS ARE BASED ON INFORMATION PROVIDED BY THE U.S. COAST GUARD. BUOY LOCATIONS REPRESENT THE POSITION OF THE SINKER ONLY.

SURVEYED BY THE CORPS OF ENGINEERS.

SOUNDINGS WERE TAKEN BY FATHOMETER AND ARE SHOWN TO THE NEAREST TENTH OF A FOOT. SOUNDINGS ARE BASED ON THE DATUM OF MEAN LOWER LOW WATER AT THE LOCALITY.

THE PROJECT DEPTH IS 35 FEET.

VERTICAL CONTROL:
SUISUN BAY CHANNEL
(LINES 00+00 TO 160+00) BENCHMARK "9" (1948), USC&GS DISK ELEV 14.875 FT MLLW, NAVD 88 DATUM.
TIDE GAUGE LOCATED AT PORT OF BENICIA DOCK.

(LINES 150+00 TO 500+00) BENCHMARK "5144-P" (1990 RESET 1997), USC&GS DISK ELEV 11.83 FT MLLW, NAVD 88 DATUM.
TIDE GAUGE LOCATED AT CONCORD NAVAL WEAPONS STATION TUG DOCK, NOAA STATION.

(LINES 660+00 TO 733+45) BENCHMARK "5096-B", USC&GS DISK ELEV 21.76 FT MLLW, NAVD 88 DATUM.
TIDE GAUGE LOCATED AT DIABLO SERVICE DOCK.

HORIZONTAL GPS CONTROL: COAST GUARD D-BEACON

US Army Corps of Engineers
San Francisco District
1455 Market Street
San Francisco, CA 94103

DISCLAIMER

The United States Government furnishes this information as a service to the public and does not warrant, express or implied, the accuracy, completeness, reliability, usability, or timeliness of the information. The user is responsible for the results of any application of the data for other than its intended purpose.

The United States Government makes no warranties, expressed or implied, concerning the accuracy, completeness, reliability, usability, or timeliness of the information. The user is responsible for the results of any application of the data for other than its intended purpose.

These data belong to the Government. Therefore the recipient may not transfer these data to others without also transferring this Disclaimer.

PREPARED UNDER THE DIRECTION OF TRAVIS J. RAYFIELD LT COLONEL, C.E. DISTRICT ENGINEER	Surveyed By:	Chart Date:
Subject: Hydro Survey Team Leader	Plotted By: PDT	Oct 23, 2017
Recommendation: Chief, Hydro Survey Section	Checked By: PDT	Designed by:
Approved: Chief, Construction Branch		Drawn by: PDT

CALIFORNIA
CONTRA COSTA COUNTY
SUISUN BAY CHANNEL
REACH 3A-3C
POST-DREDGE SURVEY
20 OCTOBER 2017

Sheet Reference
Number
2 of 12

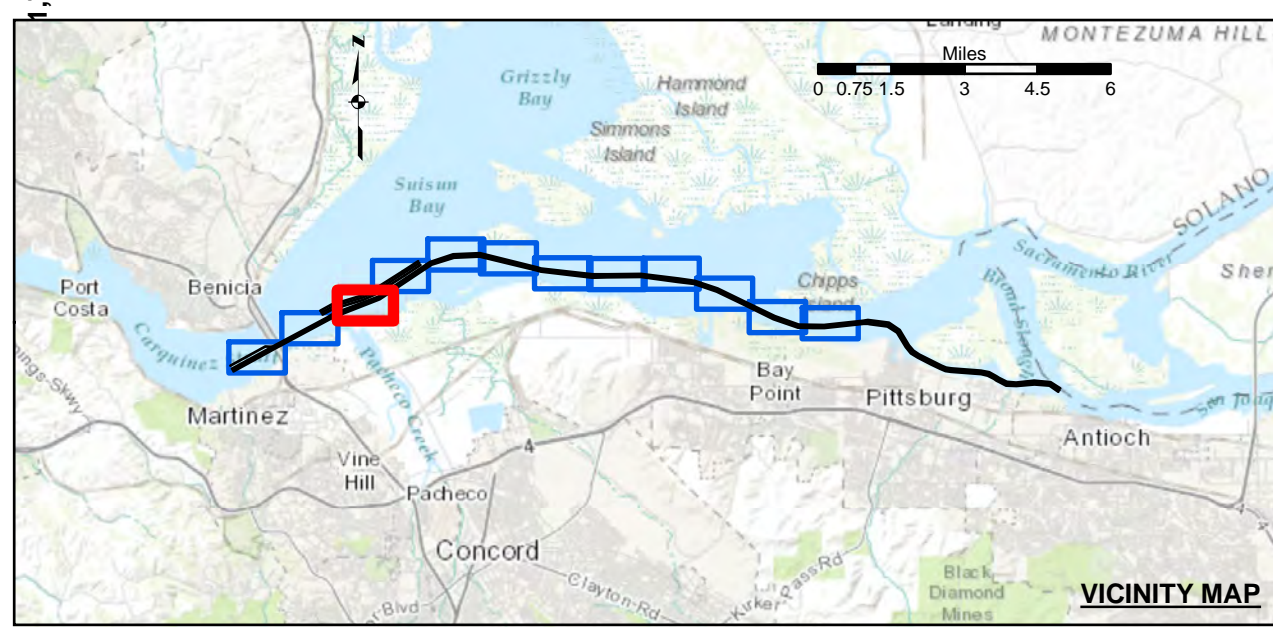


US Army Corps of Engineers
 San Francisco District
 1455 Market Street
 San Francisco, CA 94103

DISCLAIMER
 The United States Government furnishes this information as a service to the public and does not warrant, express or implied, the accuracy, completeness, reliability, usability, or timeliness of the information. The user is responsible for the results of any application of the data for other than its intended purpose.
 Distribution Liability: The data represents the results of data collection and processing activities and indicates the general conditions. As such, it is only valid for its intended use, content, time and accuracy specifications. The user is responsible for the results of any application of the data for other than its intended purpose.
 The United States Government makes no warranty, express or implied, concerning the accuracy, completeness, reliability, usability, or timeliness of the information. The user is responsible for the results of any application of the data for other than its intended purpose. These data belong to the Government. Therefore the recipient may not transfer these data to others without also transferring this disclaimer.

Prepared Under the Direction of	Chart Date:
LT COLONEL J. RAYFIELD	Oct 23, 2017
Subproject	Plotted By:
Hydro Survey Team Leader	PDT
Recommended:	Checked By:
Chief, Hydro Survey Section	PDT
Approved:	Drawn by:
Chief, Construction Branch	PDT

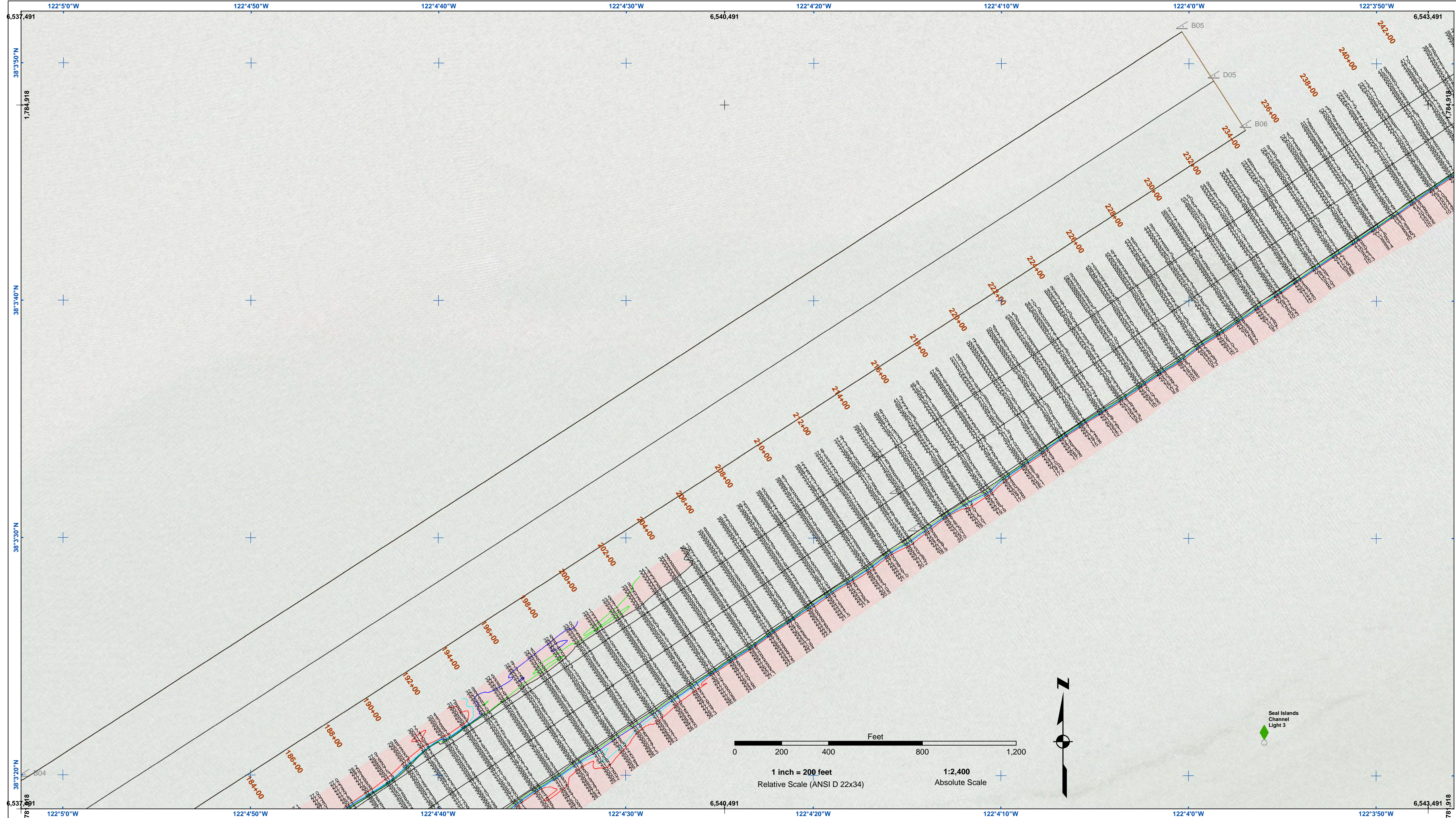
CALIFORNIA
 CONTRA COSTA COUNTY
SUISUN BAY CHANNEL
 REACH 3A-3C
 POST-DREDGE SURVEY
 20 OCTOBER 2017



- | | | |
|----------------------------|--------------------|-----------------|
| Federal Navigation Channel | Beacon, General | Contours |
| Shoaling Area | Obstruction Point | |
| Placement Area | Navigation Buoy | |
| Anchorage Area | Navigation Buoy | |
| Wreck Area | Shoalest Sounding* | |
| Submerged Wreck | | -35 |
| Angle Point | | -34 |
| | | -33 |
| | | -32 |
| | | -31 |

NOTES:
 HORIZONTAL COORDINATE SYSTEM: NORTH AMERICAN DATUM OF 1983 (NAD83), PROJECTED TO THE STATE PLANE COORDINATE SYSTEM (SPCS), CALIFORNIA ZONE II. DISTANCE UNITS IN U.S. SURVEY FEET.
 VERTICAL DATUM: SOUNDINGS ARE SHOWN IN FEET AND INDICATE DEPTHS BELOW MEAN LOWER LOW WATER.
 THE INFORMATION DEPICTED ON THIS MAP REPRESENTS THE RESULTS OF A SURVEY CONDUCTED ON THE DATE INDICATED AND CAN ONLY BE CONSIDERED TO REPRESENT THE GENERAL CONDITION EXISTING AT THAT TIME.
 PLANE GRID, BEARING AND COORDINATES ARE BASED ON THE STATE OF CALIFORNIA COORDINATE SYSTEM, LAMBERT CONFORMAL PROJECTION, ZONE II NAD 83, CALIFORNIA, AS DESCRIBED IN SPECIAL PUBLICATION NO. 235, PUBLISHED BY NATIONAL OCEAN SURVEY. BASE MAPS ARE USDA NAIP 2010.
 *SHOALEST SOUNDING PER QUARTER PER REACH
 DRAWING NOT TO BE USED FOR NAVIGATION, ONLY CHANNEL CONDITION AT DATE OF SURVEY. THE LOCATION OF ALL NAVIGATION AIDS ARE BASED ON INFORMATION PROVIDED BY THE U.S. COAST GUARD. BUOY LOCATIONS REPRESENT THE POSITION OF THE SINKER ONLY.

SURVEYED BY THE CORPS OF ENGINEERS.
 SOUNDINGS WERE TAKEN BY FATHOMETER AND ARE SHOWN TO THE NEAREST TENTH OF A FOOT. SOUNDINGS ARE BASED ON THE DATUM OF MEAN LOWER LOW WATER AT THE LOCALITY.
 THE PROJECT DEPTH IS 35 FEET.
 VERTICAL CONTROL: SUISUN BAY CHANNEL (LINES 00+00 TO 160+00) BENCHMARK "9" (1948), USC&GS DISK ELEV 14.875 FT MLLW, NAVD 88 DATUM. TIDE GAUGE LOCATED AT PORT OF BENICIA DOCK. (LINES 150+00 TO 500+00) BENCHMARK "5144-P" (1990 RESET 1997), USC&GS DISK ELEV 11.83 FT MLLW, NAVD 88 DATUM. TIDE GAUGE LOCATED AT CONCORD NAVAL WEAPONS STATION TUG DOCK, NOAA STATION. (LINES 660+00 TO 733+45) BENCHMARK "5096-B", USC&GS DISK ELEV 21.76 FT MLLW, NAVD 88 DATUM. TIDE GAUGE LOCATED AT DIABLO SERVICE DOCK.
 HORIZONTAL GPS CONTROL: COAST GUARD D-BEACON



US Army Corps of Engineers
 San Francisco District
 1455 Market Street
 San Francisco, CA 94103

DISCLAIMER
 The United States Government furnishes this information as a service to the public. It is not intended to be used for any purpose other than its intended purpose. The user is responsible for the results of any application of the data for other than its intended purpose. The United States Government makes no warranty, expressed or implied, concerning the accuracy, completeness, or reliability of the information furnished. The user is responsible for the results of any application of the data for other than its intended purpose. These data belong to the Government. Therefore, the recipient may not transfer these data to others without also transferring this disclaimer.

Prepared Under the Direction of	Travis J. Rayfield	Chart Date	Oct 23, 2017
Surveyed By	PDT	Designed by	PDT
Plotted By	PDT	Drawn by	PDT
Checked By	PDT		
Approved	Chief, Construction Branch		

CALIFORNIA
 CONTRA COSTA COUNTY
SUISUN BAY CHANNEL
 REACH 3A-3C
 POST-DREDGE SURVEY
 20 OCTOBER 2017

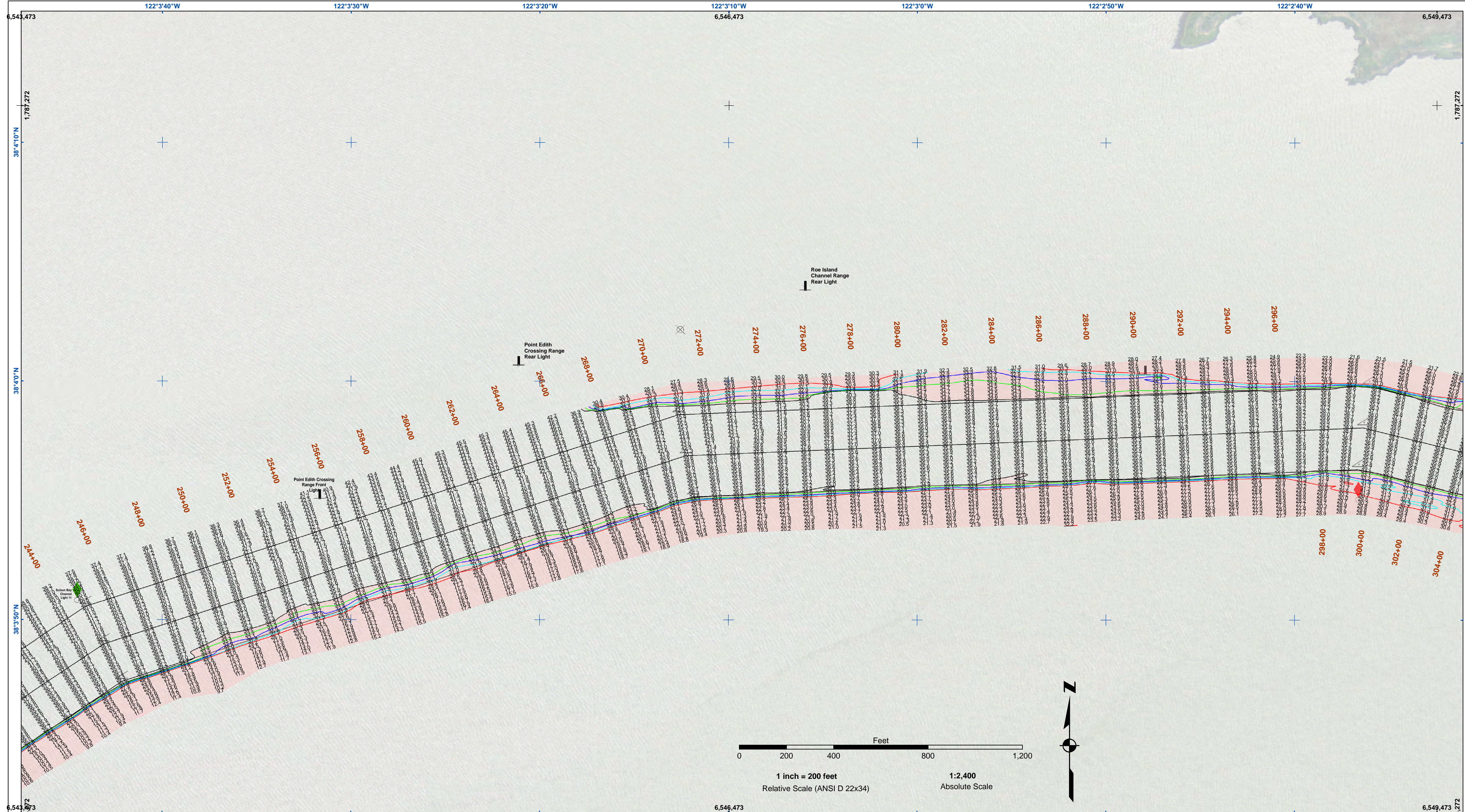
Sheet Reference Number
 4 of 12



Federal Navigation Channel	Beacon, General	Contours
Shoaling Area	Obstruction Point	
Placement Area	Navigation Buoy	
Anchorage Area	Navigation Buoy	
Wreck Area	Shoalest Sounding*	
Submerged Wreck		-35
Angle Point		-34
		-33
		-32
		-31

NOTES:
 HORIZONTAL COORDINATE SYSTEM: NORTH AMERICAN DATUM OF 1983 (NAD83), PROJECTED TO THE STATE PLANE COORDINATE SYSTEM (SPCS), CALIFORNIA ZONE II. DISTANCE UNITS IN U.S. SURVEY FEET.
 VERTICAL DATUM: SOUNDINGS ARE SHOWN IN FEET AND INDICATE DEPTHS BELOW MEAN LOWER LOW WATER.
 THE INFORMATION DEPICTED ON THIS MAP REPRESENTS THE RESULTS OF A SURVEY CONDUCTED ON THE DATE INDICATED AND CAN ONLY BE CONSIDERED TO REPRESENT THE GENERAL CONDITION EXISTING AT THAT TIME.
 PLANE GRID, BEARING AND COORDINATES ARE BASED ON THE STATE OF CALIFORNIA COORDINATE SYSTEM, LAMBERT CONFORMAL PROJECTION, ZONE II NAD 83, CALIFORNIA, AS DESCRIBED IN SPECIAL PUBLICATION NO. 235, PUBLISHED BY NATIONAL OCEAN SURVEY, BASE MAPS ARE USDA NAIP 2010.
 *SHOALEST SOUNDING PER QUARTER PER REACH
 DRAWING NOT TO BE USED FOR NAVIGATION, ONLY CHANNEL CONDITION AT DATE OF SURVEY.
 THE LOCATION OF ALL NAVIGATION AIDS ARE BASED ON INFORMATION PROVIDED BY THE U.S. COAST GUARD. BUOY LOCATIONS REPRESENT THE POSITION OF THE SINKER ONLY.

SURVEYED BY THE CORPS OF ENGINEERS.
 SOUNDINGS WERE TAKEN BY FATHOMETER AND ARE SHOWN TO THE NEAREST TENTH OF A FOOT. SOUNDINGS ARE BASED ON THE DATUM OF MEAN LOWER LOW WATER AT THE LOCALITY.
 THE PROJECT DEPTH IS 35 FEET.
 VERTICAL CONTROL: SUISUN BAY CHANNEL (LINES 00+00 TO 160+00) BENCHMARK "9" (1948), USC&GS DISK ELEV 14.875 FT MLLW, NAVD 88 DATUM. TIDE GAUGE LOCATED AT PORT OF BENICIA DOCK. (LINES 150+00 TO 500+00) BENCHMARK "5144-P" (1990 RESET 1997), USC&GS DISK ELEV 11.83 FT MLLW, NAVD 88 DATUM. TIDE GAUGE LOCATED AT CONCORD NAVAL WEAPONS STATION TUG DOCK, NOAA STATION. (LINES 660+00 TO 733+45) BENCHMARK "5096-B", USC&GS DISK ELEV 21.76 FT MLLW, NAVD 88 DATUM. TIDE GAUGE LOCATED AT DIABLO SERVICE DOCK.
 HORIZONTAL GPS CONTROL: COAST GUARD D-BEACON



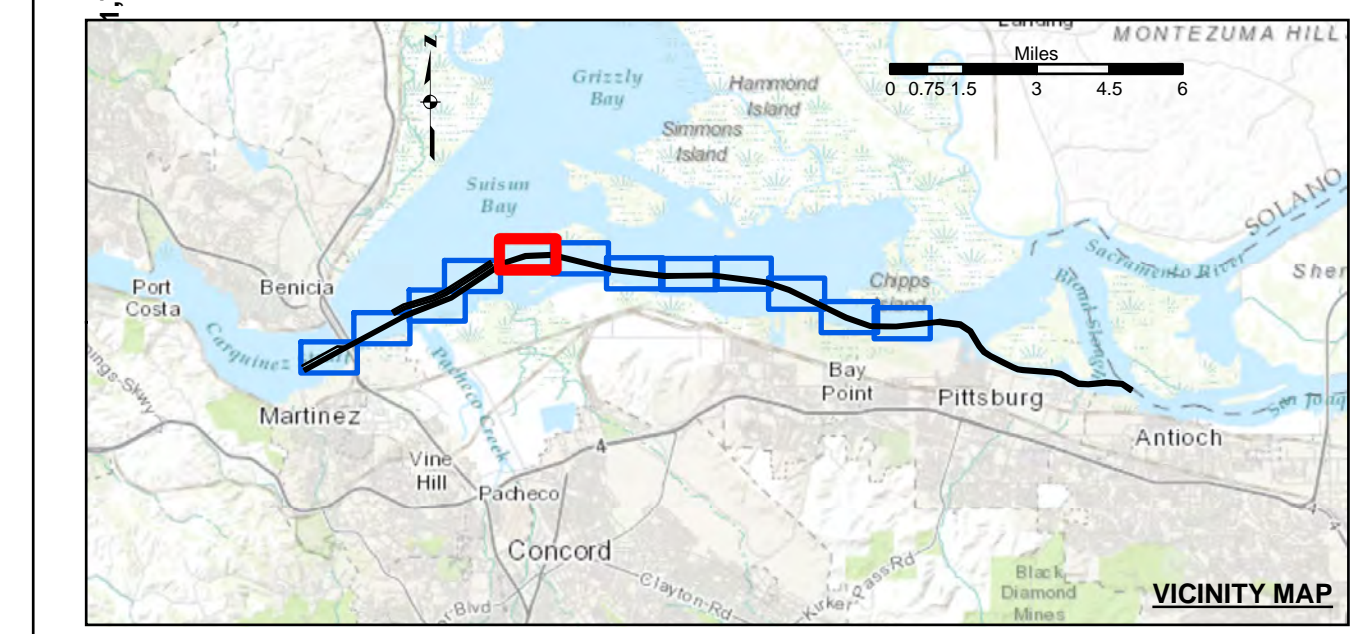
US Army Corps of Engineers
 San Francisco District
 1455 Market Street
 San Francisco, CA 94103

DISCLAIMER
 The United States Government furnishes this information as a public service and does not warrant, express or implied, the accuracy, completeness, or reliability of the information. The user is responsible for the results of any application of the data for other than its intended purpose. These data belong to the Government. Therefore, the recipient may not transfer these data to others without also transferring the disclaimer.

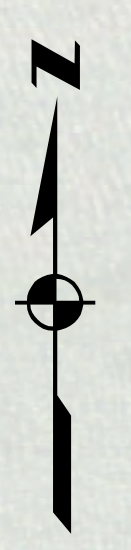
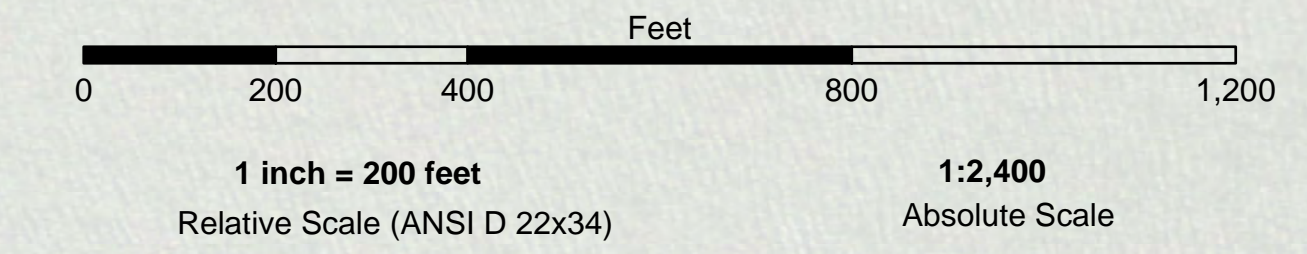
Prepared Under the Direction of TRAVIS J. RAYFIELD LT Colonel, C.E., District Engineer	Chart Date: Oct 23, 2017
Subproject: Hydro Survey Team Leader	Designed By: PDT
Recommended: Chief, Hydro Survey Section	Plotted By: PDT
Approved: Chief, Construction Branch	Checked By: PDT
	Drawn By: PDT

CALIFORNIA
 CONTRA COSTA COUNTY
SUISUN BAY CHANNEL
 REACH 3A-3C
 POST-DREDGE SURVEY
 20 OCTOBER 2017

Sheet Reference Number
 5 of 12

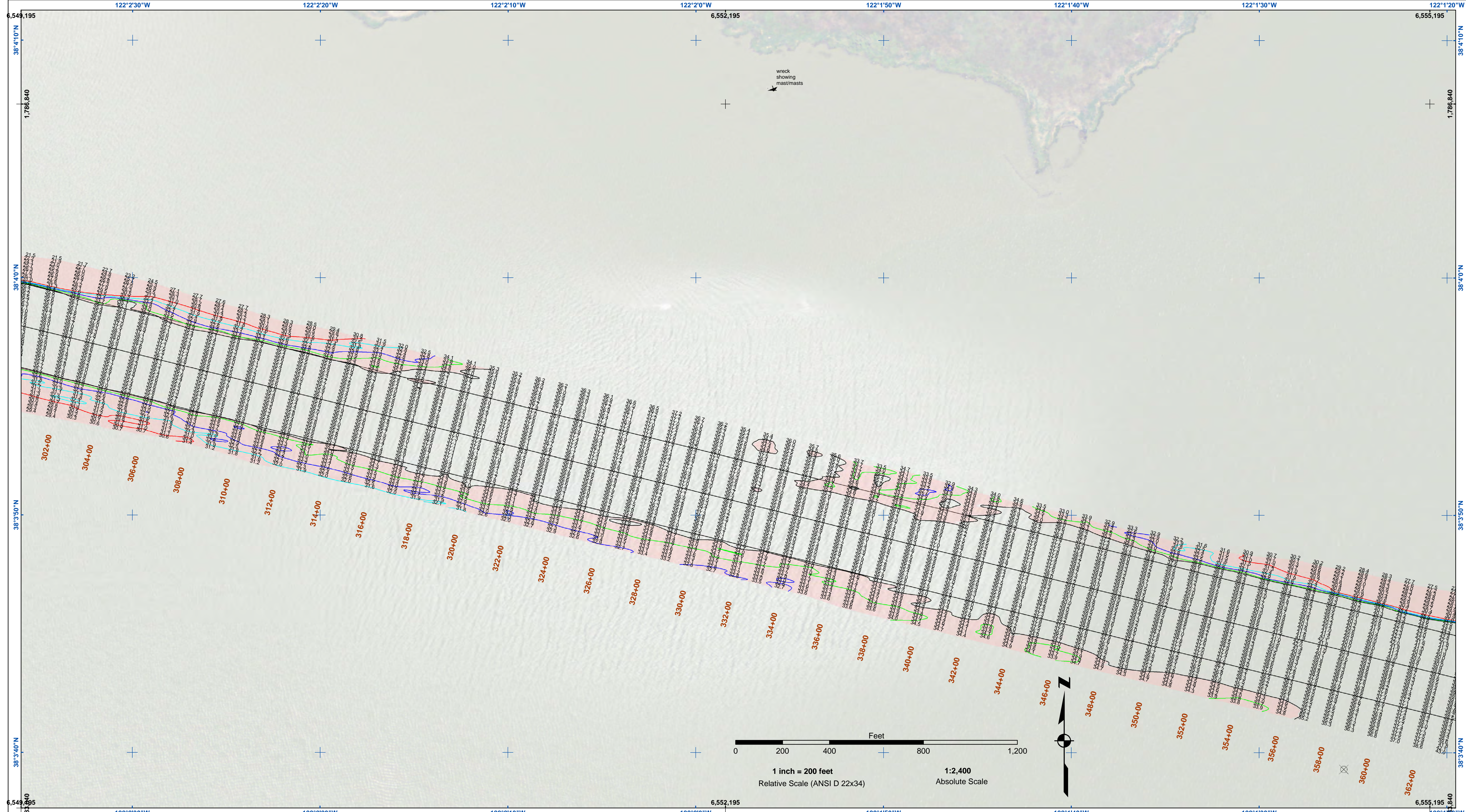


Federal Navigation Channel	Beacon, General	Contours
Shoaling Area	Obstruction Point	
Placement Area	Navigation Buoy	
Anchorage Area	Navigation Buoy	
Wreck Area	Shoalest Sounding*	
Submerged Wreck		-35
Angle Point		-34
		-33
		-32
		-31



NOTES:
 HORIZONTAL COORDINATE SYSTEM: NORTH AMERICAN DATUM OF 1983 (NAD83), PROJECTED TO THE STATE PLANE COORDINATE SYSTEM (SPCS), CALIFORNIA ZONE II. DISTANCE UNITS IN U.S. SURVEY FEET.
 VERTICAL DATUM: SOUNDINGS ARE SHOWN IN FEET AND INDICATE DEPTHS BELOW MEAN LOWER LOW WATER.
 THE INFORMATION DEPICTED ON THIS MAP REPRESENTS THE RESULTS OF A SURVEY CONDUCTED ON THE DATE INDICATED AND CAN ONLY BE CONSIDERED TO REPRESENT THE GENERAL CONDITION EXISTING AT THAT TIME.
 PLANE GRID, BEARING AND COORDINATES ARE BASED ON THE STATE OF CALIFORNIA COORDINATE SYSTEM, LAMBERT CONFORMAL PROJECTION, ZONE II NAD 83, CALIFORNIA, AS DESCRIBED IN SPECIAL PUBLICATION NO. 235, PUBLISHED BY NATIONAL OCEAN SURVEY, BASE MAPS ARE USDA NAIP 2010.
 *SHOALEST SOUNDING PER QUARTER PER REACH
 DRAWING NOT TO BE USED FOR NAVIGATION, ONLY CHANNEL CONDITION AT DATE OF SURVEY. THE LOCATION OF ALL NAVIGATION AIDS ARE BASED ON INFORMATION PROVIDED BY THE U.S. COAST GUARD. BUOY LOCATIONS REPRESENT THE POSITION OF THE SINKER ONLY.

SURVEYED BY THE CORPS OF ENGINEERS.
 SOUNDINGS WERE TAKEN BY FATHOMETER AND ARE SHOWN TO THE NEAREST TENTH OF A FOOT. SOUNDINGS ARE BASED ON THE DATUM OF MEAN LOWER LOW WATER AT THE LOCALITY.
 THE PROJECT DEPTH IS 35 FEET.
 VERTICAL CONTROL: SUISUN BAY CHANNEL (LINES 00+00 TO 160+00) BENCHMARK "9" (1948), USC&GS DISK ELEV 14.875 FT MLLW, NAVD 88 DATUM. TIDE GAUGE LOCATED AT PORT OF BENICIA DOCK. (LINES 150+00 TO 500+00) BENCHMARK "5144-P" (1990 RESET 1997), USC&GS DISK ELEV 11.83 FT MLLW, NAVD 88 DATUM. TIDE GAUGE LOCATED AT CONCORD NAVAL WEAPONS STATION TUG DOCK, NOAA STATION. (LINES 660+00 TO 733+45) BENCHMARK "5096-B", USC&GS DISK ELEV 21.76 FT MLLW, NAVD 88 DATUM. TIDE GAUGE LOCATED AT DIABLO SERVICE DOCK.
 HORIZONTAL GPS CONTROL: COAST GUARD D-BEACON



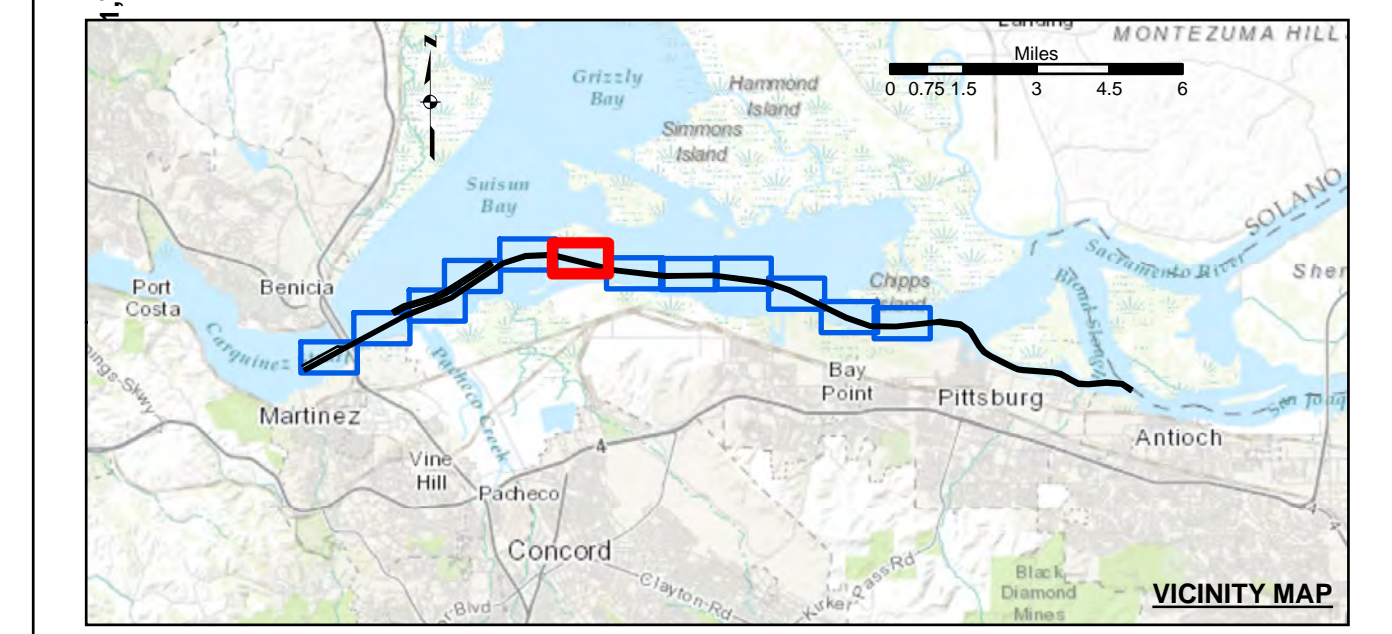
US Army Corps of Engineers
 San Francisco District
 1455 Market Street
 San Francisco, CA 94103

DISCLAIMER
 The United States Government furnishes this information for your information only. It is not intended to be used for any purpose other than that for which it was prepared. The user is responsible for the results of any application of the data for other than its intended purpose. The user is responsible for the results of any application of the data for other than its intended purpose. The user is responsible for the results of any application of the data for other than its intended purpose.

Prepared Under the Direction of	Chart Date:
TRAVIS J. RAYFIELD	Oct 23, 2017
LT Colonel, C.E., District Engineer	Designed by:
	PDT
Subject:	Plotted by:
Hydro Survey Team Leader	PDT
Recommended:	Checked by:
Chief, Hydro Survey Section	PDT
Approved:	Drawn by:
Chief, Construction Branch	PDT

CALIFORNIA
 CONTRA COSTA COUNTY
SUISUN BAY CHANNEL
 REACH 3A-3C
 POST-DREDGE SURVEY
 20 OCTOBER 2017

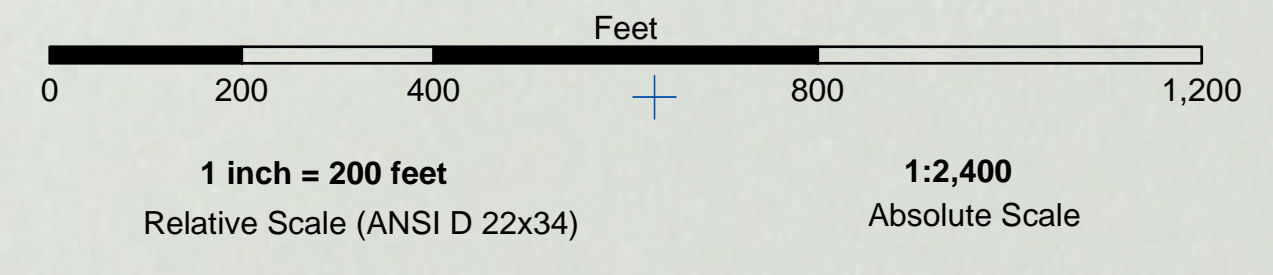
Sheet Reference Number
 6 of 12

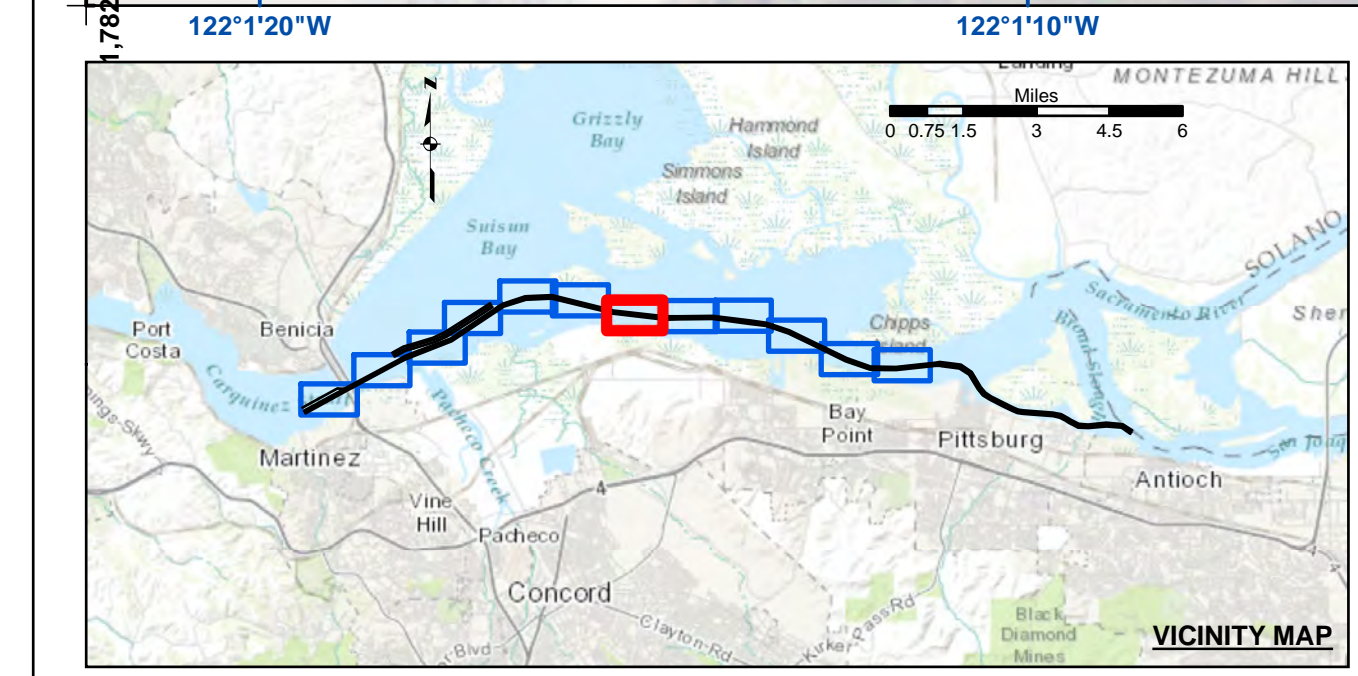
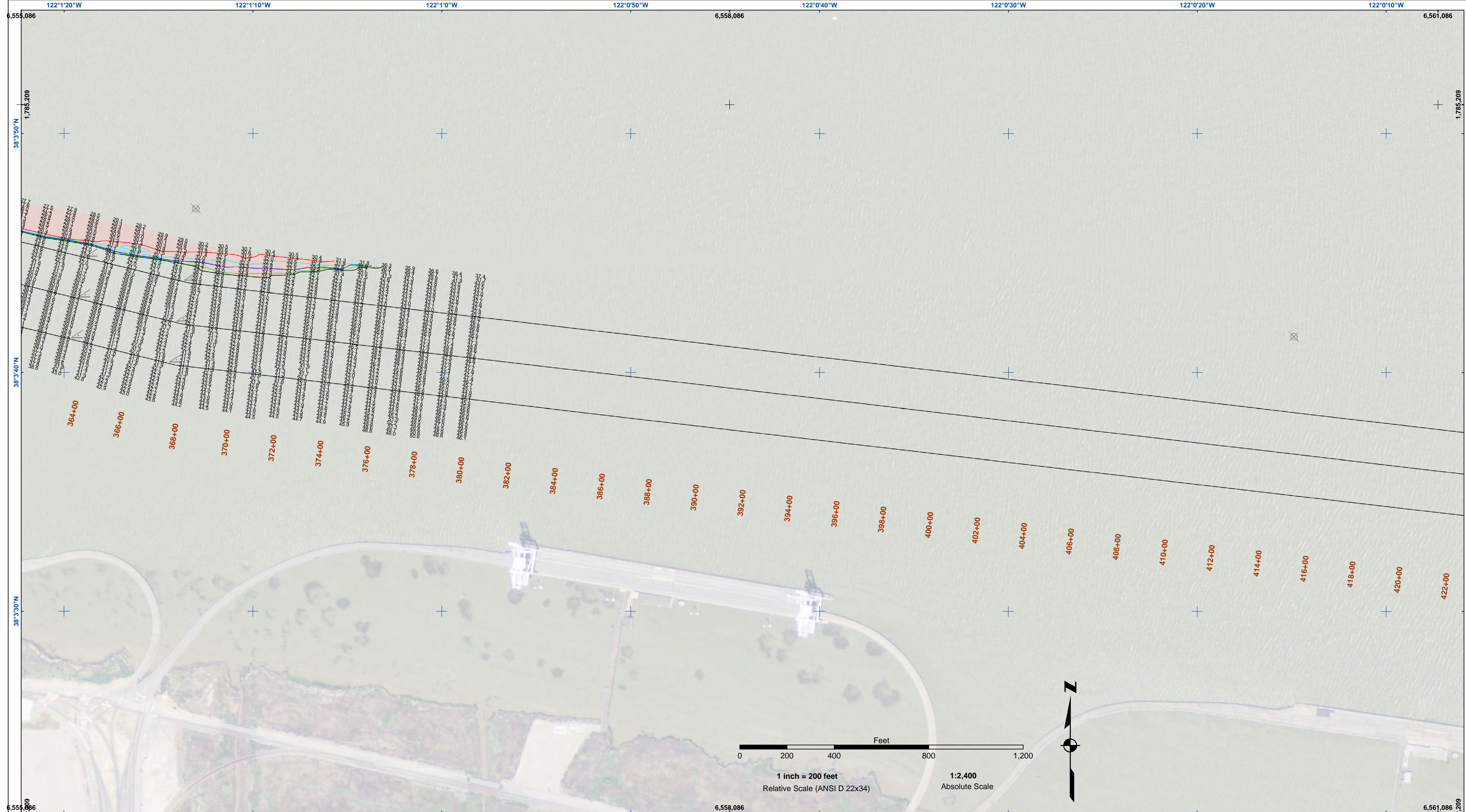


Federal Navigation Channel	Beacon, General	Contours
Shoaling Area	Obstruction Point	-35
Placement Area	Navigation Buoy	-34
Anchorage Area	Navigation Buoy	-33
Wreck Area	Shoalest Sounding*	-32
Submerged Wreck		-31
Angle Point		

NOTES:
 HORIZONTAL COORDINATE SYSTEM:
 NORTH AMERICAN DATUM OF 1983 (NAD83), PROJECTED TO THE STATE PLANE COORDINATE SYSTEM (SPCS), CALIFORNIA ZONE II. DISTANCE UNITS IN U.S. SURVEY FEET.
 VERTICAL DATUM:
 SOUNDINGS ARE SHOWN IN FEET AND INDICATE DEPTHS BELOW MEAN LOWER LOW WATER.
 THE INFORMATION DEPICTED ON THIS MAP REPRESENTS THE RESULTS OF A SURVEY CONDUCTED ON THE DATE INDICATED AND CAN ONLY BE CONSIDERED TO REPRESENT THE GENERAL CONDITION EXISTING AT THAT TIME.
 PLANE GRID, BEARING AND COORDINATES ARE BASED ON THE STATE OF CALIFORNIA COORDINATE SYSTEM, LAMBERT CONFORMAL PROJECTION, ZONE II NAD 83, CALIFORNIA, AS DESCRIBED IN SPECIAL PUBLICATION NO. 235, PUBLISHED BY NATIONAL OCEAN SURVEY, BASE MAPS ARE USDA NAIP 2010.
 *SHOALEST SOUNDING PER QUARTER PER REACH
 DRAWING NOT TO BE USED FOR NAVIGATION, ONLY CHANNEL CONDITION AT DATE OF SURVEY.
 THE LOCATION OF ALL NAVIGATION AIDS ARE BASED ON INFORMATION PROVIDED BY THE U.S. COAST GUARD. BUOY LOCATIONS REPRESENT THE POSITION OF THE SINKER ONLY.

SURVEYED BY THE CORPS OF ENGINEERS.
 SOUNDINGS WERE TAKEN BY FATHOMETER AND ARE SHOWN TO THE NEAREST TENTH OF A FOOT. SOUNDINGS ARE BASED ON THE DATUM OF MEAN LOWER LOW WATER AT THE LOCALITY.
 THE PROJECT DEPTH IS 35 FEET.
 VERTICAL CONTROL:
 SUISUN BAY CHANNEL
 (LINES 00+00 TO 160+00) BENCHMARK "9" (1948), USC&GS DISK ELEV 14.875 FT MLLW, NAVD 88 DATUM, TIDE GAUGE LOCATED AT PORT OF BENICIA DOCK.
 (LINES 150+00 TO 500+00) BENCHMARK "5144-P" (1990 RESET 1997), USC&GS DISK ELEV 11.83 FT MLLW, NAVD 88 DATUM, TIDE GAUGE LOCATED AT CONCORD NAVAL WEAPONS STATION TUG DOCK, NOAA STATION.
 (LINES 660+00 TO 733+45) BENCHMARK "5096-B", USC&GS DISK ELEV 21.76 FT MLLW, NAVD 88 DATUM, TIDE GAUGE LOCATED AT DIABLO SERVICE DOCK.
 HORIZONTAL GPS CONTROL: COAST GUARD D-BEACON





	Federal Navigation Channel		Beacon, General	Contours	
	Shoaling Area		Obstruction Point		
	Placement Area		Navigation Buoy		
	Anchorage Area		Navigation Buoy		
	Wreck Area		Shoalest Sounding*		
	Submerged Wreck				-35
	Angle Point				-34
					-33
					-32
					-31

NOTES:

HORIZONTAL COORDINATE SYSTEM: NORTH AMERICAN DATUM OF 1983 (NAD83), PROJECTED TO THE STATE PLANE COORDINATE SYSTEM (SPCS), CALIFORNIA ZONE II. DISTANCE UNITS IN U.S. SURVEY FEET.

VERTICAL DATUM: SOUNDINGS ARE SHOWN IN FEET AND INDICATE DEPTHS BELOW MEAN LOWER LOW WATER.

THE INFORMATION DEPICTED ON THIS MAP REPRESENTS THE RESULTS OF A SURVEY CONDUCTED ON THE DATE INDICATED AND CAN ONLY BE CONSIDERED TO REPRESENT THE GENERAL CONDITION EXISTING AT THAT TIME.

PLANE GRID, BEARING AND COORDINATES ARE BASED ON THE STATE OF CALIFORNIA COORDINATE SYSTEM, LAMBERT CONFORMAL PROJECTION, ZONE II IN NAD 83, CALIFORNIA, AS DESCRIBED IN SPECIAL PUBLICATION NO. 235, PUBLISHED BY NATIONAL OCEAN SURVEY, BASE MAPS ARE USDA NAIP 2010.

*SHOALEST SOUNDING PER QUARTER PER REACH

DRAWING NOT TO BE USED FOR NAVIGATION, ONLY CHANNEL CONDITION AT DATE OF SURVEY. THE LOCATION OF ALL NAVIGATION AIDS ARE BASED ON INFORMATION PROVIDED BY THE U.S. COAST GUARD. BUOY LOCATIONS REPRESENT THE POSITION OF THE SINKER ONLY.

SURVEYED BY THE CORPS OF ENGINEERS.

SOUNDINGS WERE TAKEN BY FATHOMETER AND ARE SHOWN TO THE NEAREST TENTH OF A FOOT. SOUNDINGS ARE BASED ON THE DATUM OF MEAN LOWER LOW WATER AT THE LOCALITY.

THE PROJECT DEPTH IS 35 FEET.

VERTICAL CONTROL: SUISUN BAY CHANNEL (LINES 00+00 TO 160+00) BENCHMARK "9" (1948), USC&GS DISK ELEV 14.875 FT MLLW, NAVD 88 DATUM, TIDE GAUGE LOCATED AT PORT OF BENICIA DOCK.

(LINES 150+00 TO 500+00) BENCHMARK "5144-P" (1990 RESET 1997), (LINES 500+00 TO 860+00) BENCHMARK "5144-P" (1990 RESET 1997), USC&GS DISK ELEV 11.83 FT MLLW, NAVD 88 DATUM, TIDE GAUGE LOCATED AT CONCORD NAVAL WEAPONS STATION TUG DOCK, NOAA STATION.

(LINES 860+00 TO 733+45) BENCHMARK "5096-B", USC&GS DISK ELEV 21.76 FT MLLW, NAVD 88 DATUM, TIDE GAUGE LOCATED AT DIABLO SERVICE DOCK.

HORIZONTAL GPS CONTROL: COAST GUARD D-BEACON



DISCLAIMER

The United States Government furnishes this information as a service to the public and does not warrant, express or implied, the accuracy, completeness, reliability, usability, or timeliness of the information. The user is responsible for the results of any application of the data for other than its intended purpose.

The United States Government makes no warranty, express or implied, concerning the accuracy, completeness, reliability, usability, or timeliness of the information. The user is responsible for the results of any application of the data for other than its intended purpose.

These data belong to the Government. Therefore the recipient may not transfer these data to others without also transferring this disclaimer.

Prepared Under the Direction of	Chart Date:	Oct 23, 2017
TRAVIS J. RAYFIELD	Surveyed By:	PDT
LT. COLONEL, C.E., DISTRICT ENGINEER	Plotted By:	PDT
Subject: Hydro Survey Team Leader	Checked By:	PDT
Recommended: Chief, Hydro Survey Section	Drawn by:	PDT
Approved: Chief, Construction Branch		

CALIFORNIA
CONTRA COSTA COUNTY
SUISUN BAY CHANNEL
REACH 3A-3C
POST-DREDGE SURVEY
20 OCTOBER 2017

Sheet Reference Number
7 of 12