

LEGEND		
--- Federal Navigation Channel	▨ Cable Area	■ Shoaling Area
— Federal Navigation Center Line	□ Placement Area	● Shoalest Sounding**
..... Cable Submarine	▭ Anchorage Area	⊥ Beacon, General
- - - Cable Overhead	⊗ Obstruction Point	♦ Red Navigation Buoy
— Contour Line	✦ Wrecks-Submerged	◆ Green Navigation Buoy

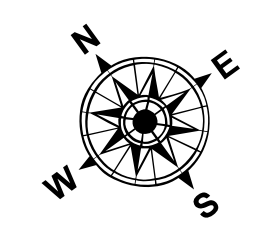
Contours	
—	-35
—	-34
—	-33
—	-32
—	-31

NOTES:
DRAWING NOT TO BE USED FOR NAVIGATION. ONLY CHANNEL CONDITION AT DATE OF SURVEY.
THE LOCATION OF ALL NAVIGATION AIDS ARE BASED ON INFORMATION PROVIDED BY THE U.S. COAST GUARD. BUOY LOCATIONS REPRESENT THE POSITION OF THE SINKER ONLY.
SOUNDINGS WERE TAKEN BY FATHOMETER AND ARE SHOWN TO THE NEAREST TENTH OF A FOOT.
SOUNDINGS ARE BASED ON THE DATUM OF MEAN LOWER LOW WATER AT THE LOCALITY.
PLANE GRID AND COORDINATES ARE BASED ON LAMBERT PROJECTION, NAD 83, ZONE II, CALIFORNIA AS DESCRIBED IN SPECIAL PUBLICATION NO. 235, PUBLISHED BY THE NATIONAL OCEAN SURVEY.
PROJECT DEPTH: -35'
VERTICAL DATUM: MLLW
THE LOCATION OF NAVIGATION AIDS ARE BASED ON AND PROVIDED BY THE U.S. COAST GUARD

CONTROLS:
LOCATION: ANTIOCH
NOAA STATION: 941 5064
BENCHMARK: 5064-F (No PID)
TIDE GAUGE:
NAIL @ 10.15 FT MLLW
LAT. 38 01 6.9393 N
LONG: 121 48 56.7074 W

LOCATION: PORT OF STOCKTON
NOAA STATION: 941 4867
BENCHMARK: 941 4867 TIDAL 2 (PID: HS0438)
TIDE GAUGE:
NAIL @ 10.0 FT MLLW
LAT: 37 55 44.62 N
LONG: 121 19 40.74 W

OTHER SAN JOAQUIN RIVER GAUGES:
DAY MARKER 19 = 8.2 FT MLLW
DAY MARKER 27 = 9.0 FT MLLW
DAY MARKER 29 = 9.0 FT MLLW
PORT OF STOCKTON TG #2 (37.951 N, 121.334 W) = 10.0 FT MLLW



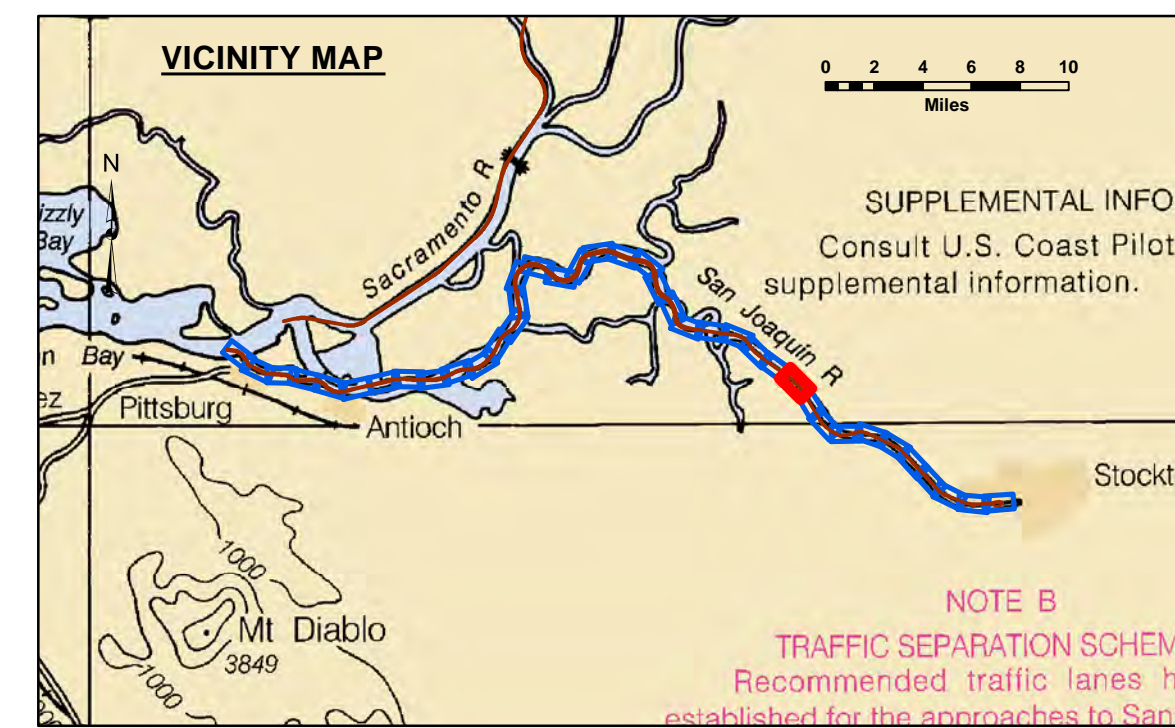
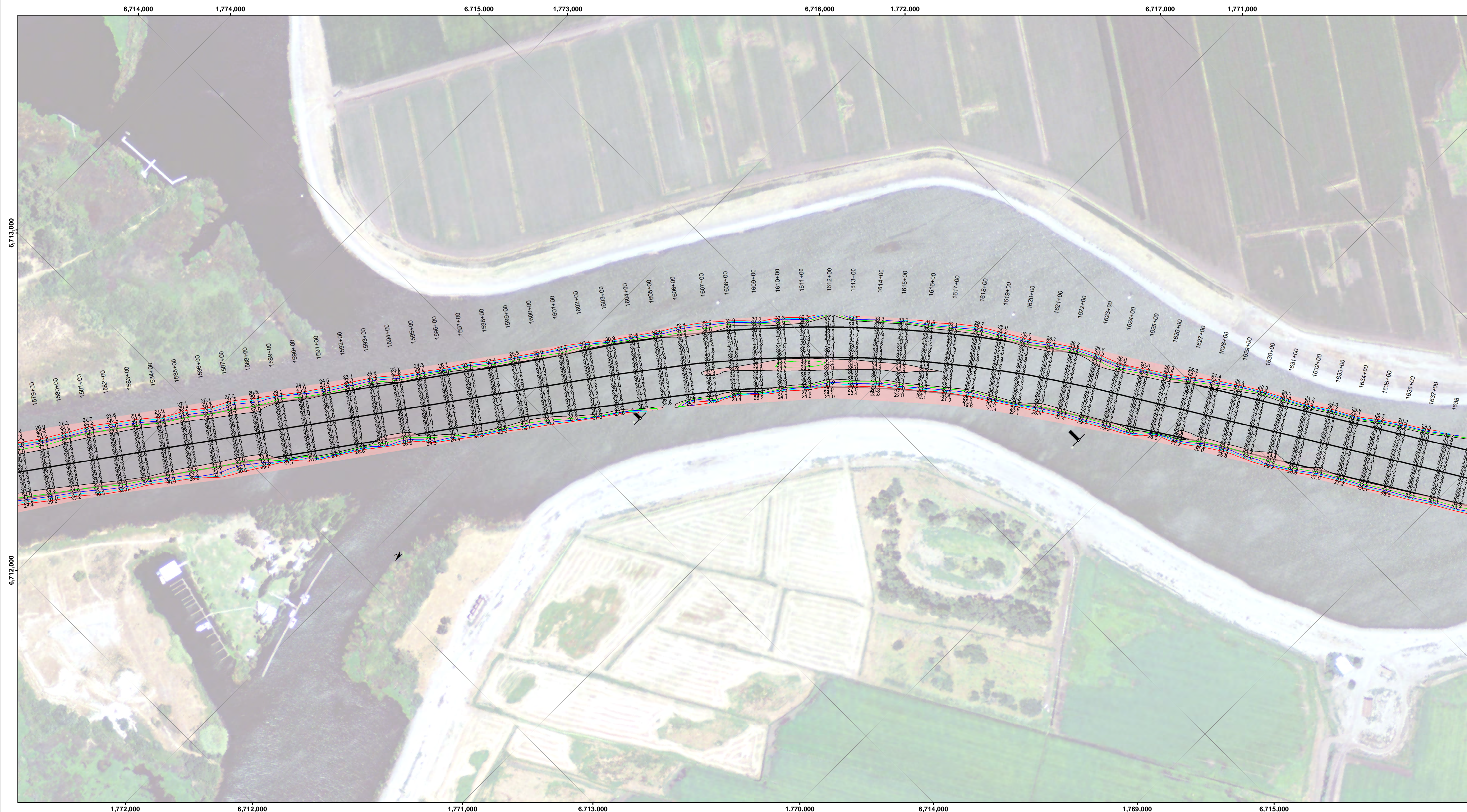
DISCLAIMER: The data represents the results of data collection/processing for a specific US Army Corps of Engineers project. It is not intended for use in any other project. As such, it is only valid for its intended use, content, time and accuracy specifications. The user is responsible for the results of any of the application of the data for other than its intended purpose.

ACCESS CONSTRAINTS: The United States Government furnishes this information as it is received, without warranty, express or implied, concerning the accuracy, completeness, or timeliness of the information. The United States shall be under no liability whatsoever to any person by reason of any use of the information provided hereunder, and the recipient shall be responsible for obtaining any other data needed for any other purpose. The recipient may not transfer this data to others without first transferring this Disclaimer.

Prepared Under the Direction of JOHN D. CUNNINGHAM LT. COLONEL, C.E. DISTRICT ENGINEER	Chart Date: Dec 04, 2019
Submitted: Hydro Survey Team Leader	Surveyed By: _____
Recommended: Chief, Hydro Survey Section	Plotted By: PDT
Approved: Chief, Construction Branch	Checked By: PDT
	Designed by: _____
	Drawn by: PDT

CALIFORNIA
SAN JOAQUIN COUNTY
STOCKTON RIVER
CONDITION SURVEY
02 DECEMBER 2019

Sheet Reference Number
28 of 39



LEGEND		
--- Federal Navigation Channel	▨ Cable Area	■ Shoaling Area
— Federal Navigation Center Line	□ Placement Area	● Shoalest Sounding**
..... Cable Submarine	⊠ Anchorage Area	⊥ Beacon, General
- - - Cable Overhead	⊗ Obstruction Point	◆ Red Navigation Buoy
— Contour Line	✦ Wrecks-Submerged	◆ Green Navigation Buoy

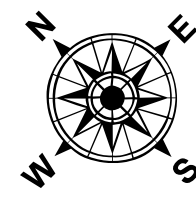
Contours	
—	-35
—	-34
—	-33
—	-32
—	-31

NOTES:
DRAWING NOT TO BE USED FOR NAVIGATION. ONLY CHANNEL CONDITION AT DATE OF SURVEY.
THE LOCATION OF ALL NAVIGATION AIDS ARE BASED ON INFORMATION PROVIDED BY THE U.S. COAST GUARD. BUOY LOCATIONS REPRESENT THE POSITION OF THE SINKER ONLY.
SOUNDINGS WERE TAKEN BY FATHOMETER AND ARE SHOWN TO THE NEAREST TENTH OF A FOOT.
SOUNDINGS ARE BASED ON THE DATUM OF MEAN LOWER LOW WATER AT THE LOCALITY.
PLANE GRID AND COORDINATES ARE BASED ON LAMBERT PROJECTION, NAD 83, ZONE II, CALIFORNIA AS DESCRIBED IN SPECIAL PUBLICATION NO. 235, PUBLISHED BY THE NATIONAL OCEAN SURVEY.
PROJECT DEPTH: -35'
VERTICAL DATUM: MLLW
THE LOCATION OF NAVIGATION AIDS ARE BASED ON AND PROVIDED BY THE U.S. COAST GUARD

LOCATION: PORT OF STOCKTON
NOAA STATION: 941 4887
BENCHMARK: 941 4867 TIDAL 2 (PID: HS0439)
TIDE GAUGE:
NAIL @ 10.0 FT MLLW
LAT: 37 55 44.62 N
LONG: 121 19 40.74 W

OTHER SAN JOAQUIN RIVER GAUGES:
DAY MARKER 19 = 8.2 FT MLLW
DAY MARKER 27 = 9.0 FT MLLW
DAY MARKER 29 = 9.0 FT MLLW
PORT OF STOCKTON TG #2 (37.951 N, 121.334 W) = 10.0 FT MLLW

CONTROLS:
LOCATION: ANTIOCH
NOAA STATION: 941 5064
BENCHMARK: 5064-F (No PID)
TIDE GAUGE:
NAIL @ 10.15 FT MLLW
LAT: 38 01 6.9393 N
LONG: 121 48 56.7074 W



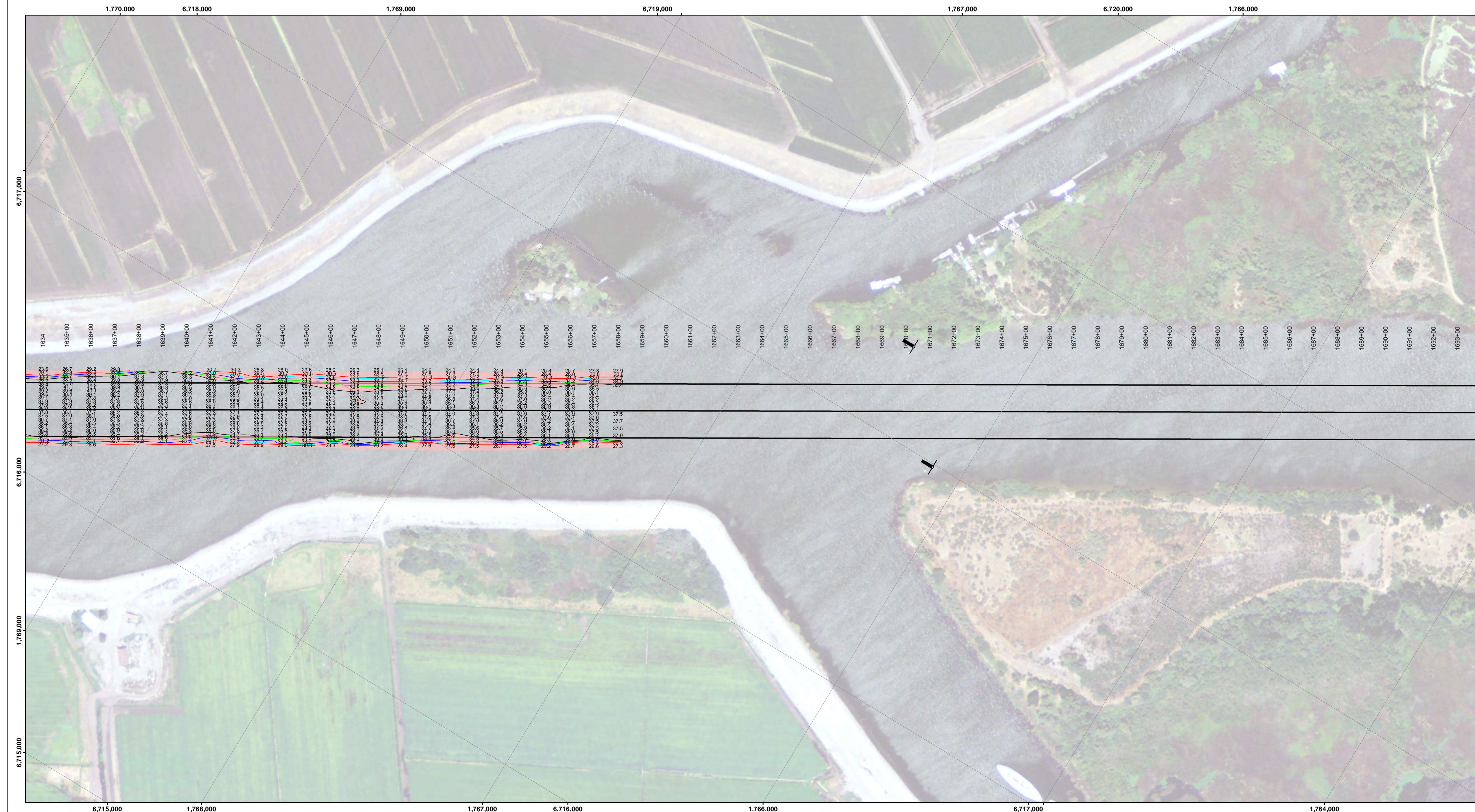
DISCLAIMER: The data represents the results of data collection/processing for a specific US Army Corps of Engineers project. The data is provided for informational purposes only. It is not intended for navigation, engineering, or any other application where accuracy is critical. The user is responsible for the results of any application of the data for other than its intended purpose.

Access Constraints: The United States Government furnishes this information as a service to the public. It is not intended for use in any other project or for any other purpose. The user is responsible for the results of any application of the data for other than its intended purpose.

Chart Date:	Dec 04, 2019
Designed by:	PDT
Drawn by:	PDT
Surveyed By:	PDT
Plotted By:	PDT
Checked By:	PDT
Approved:	Chief, Construction Branch

CALIFORNIA
SAN JOAQUIN COUNTY
STOCKTON RIVER
CONDITION SURVEY
02 DECEMBER 2019

Sheet Reference Number
29 of 39

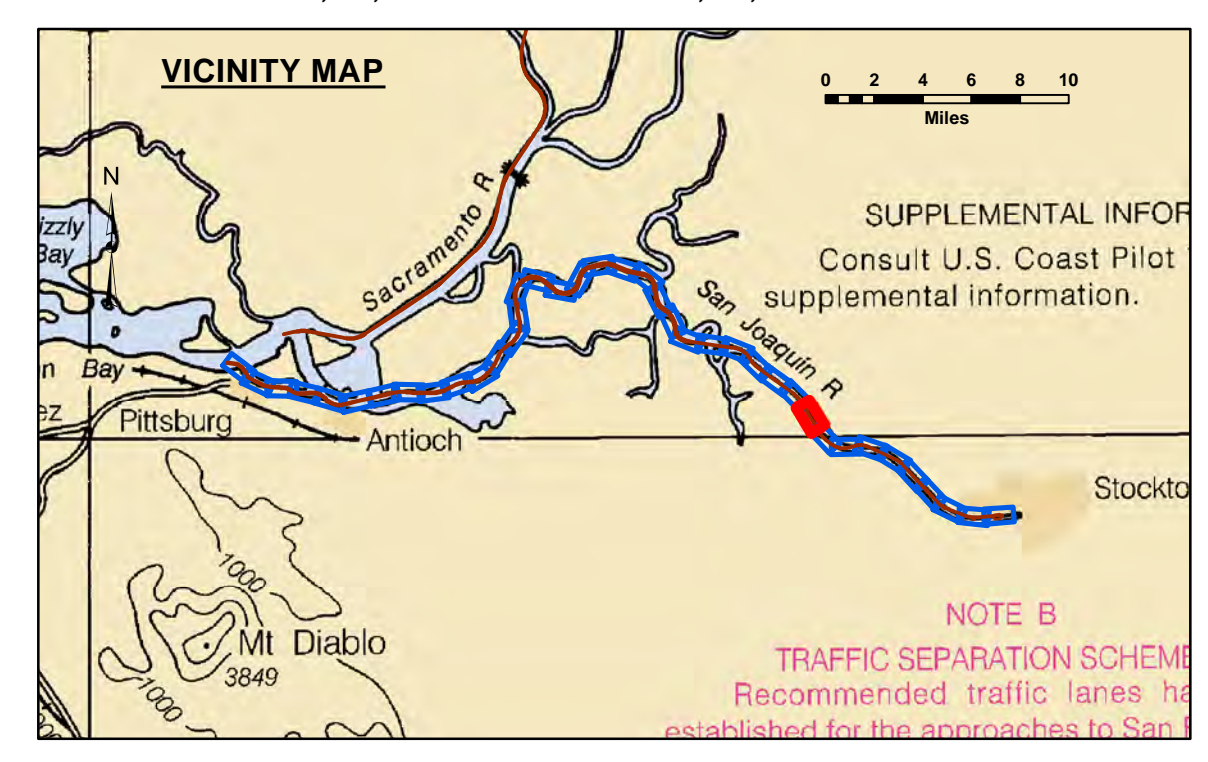


DISCLAIMER
 The data represents the results of data collection/processing for a specific US Army Corps of Engineers project. It is not intended for use in any other project. The user is responsible for the results of any application of the data for other than its intended purpose.
 Access Constraints: The United States Government furnishes this information as is, without warranty, expressed or implied concerning the accuracy, completeness, or reliability of the information. The United States shall be under no liability whatsoever to any person by reason of any use of the information provided hereunder. The recipient may not transfer these data to others without first transferring this Disclaimer.

Prepared Under the Direction of JOHN D. CUNNINGHAM LT Colonel, C.E. District Engineer	Chart Date: Dec 04, 2019
Subproject: Hydro Survey Team Leader	Designed by: _____
Recommended: Chief, Hydro Survey Section	Plotted by: PDT
Approved: Chief, Construction Branch	Checked by: PDT
	Drawn by: PDT

CALIFORNIA
STOCKTON RIVER
 CONDITION SURVEY
 02 DECEMBER 2019

Sheet Reference Number
30 of 39



Feet
 0 400 800 1,200

LEGEND		
--- Federal Navigation Channel	▨ Cable Area	■ Shoaling Area
— Federal Navigation Center Line	□ Placement Area	● Shoalest Sounding**
..... Cable Submarine	⊠ Anchorage Area	⊥ Beacon, General
- - - Cable Overhead	⊗ Obstruction Point	◆ Red Navigation Buoy
— Contour Line	✦ Wrecks-Submerged	◆ Green Navigation Buoy

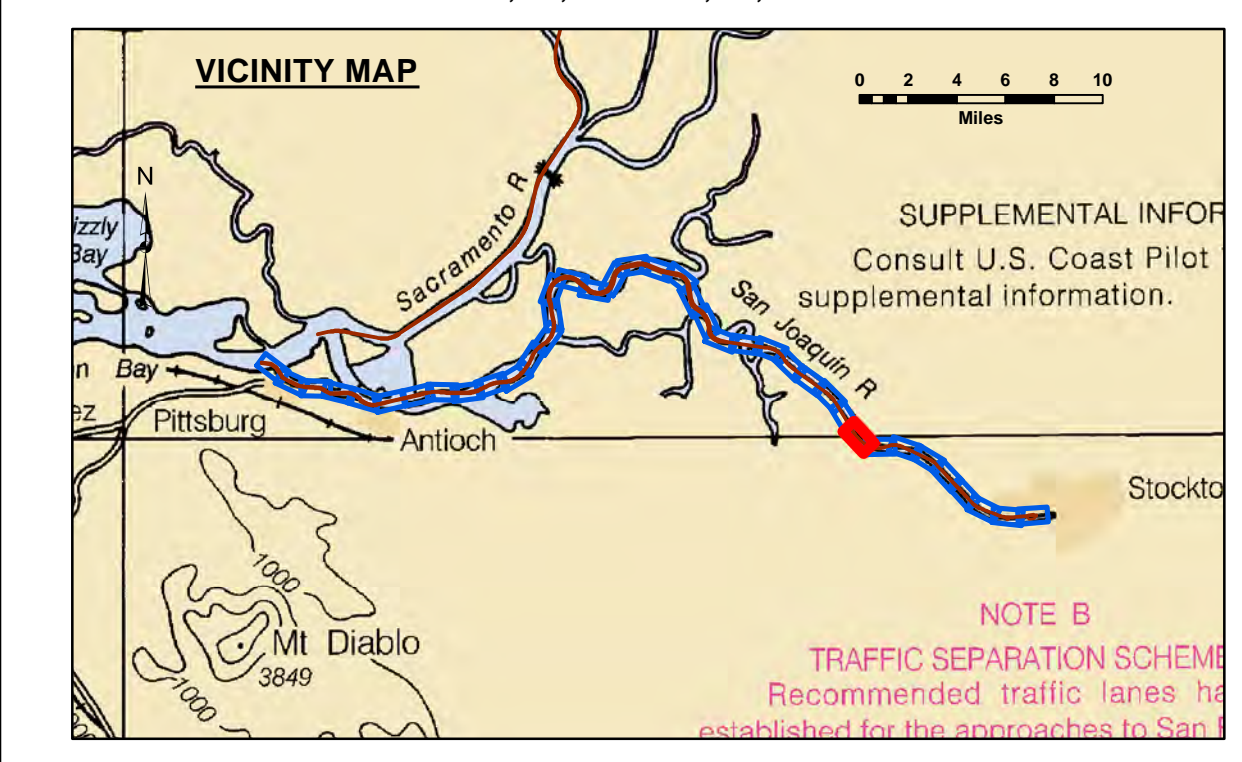
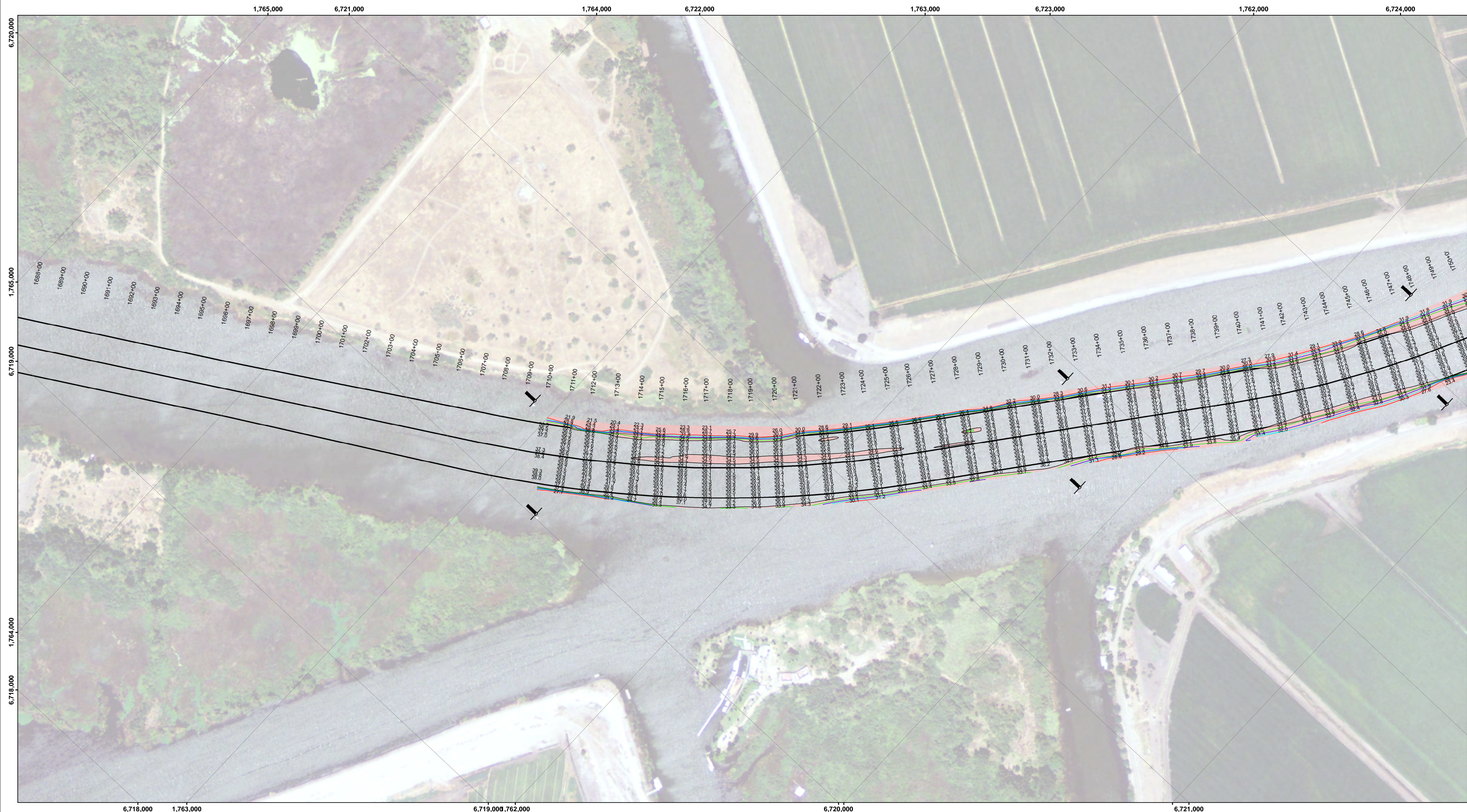
Contours	
—	-35
—	-34
—	-33
—	-32
—	-31

NOTES:
 DRAWING NOT TO BE USED FOR NAVIGATION. ONLY CHANNEL CONDITION AT DATE OF SURVEY.
 THE LOCATION OF ALL NAVIGATION AIDS ARE BASED ON INFORMATION PROVIDED BY THE U.S. COAST GUARD. BUOY LOCATIONS REPRESENT THE POSITION OF THE SINKER ONLY.
 SOUNDINGS WERE TAKEN BY FATHOMETER AND ARE SHOWN TO THE NEAREST TENTH OF A FOOT.
 SOUNDINGS ARE BASED ON THE DATUM OF MEAN LOWER LOW WATER AT THE LOCALITY.
 PLANE GRID AND COORDINATES ARE BASED ON LAMBERT PROJECTION, NAD 83, ZONE II, CALIFORNIA AS DESCRIBED IN SPECIAL PUBLICATION NO. 235, PUBLISHED BY THE NATIONAL OCEAN SURVEY.
 PROJECT DEPTH: -35'
 VERTICAL DATUM: MLLW
 THE LOCATION OF NAVIGATION AIDS ARE BASED ON AND PROVIDED BY THE U.S. COAST GUARD

LOCATION: PORT OF STOCKTON
 NOAA STATION: 941 4887
 BENCHMARK: 941 4867 TIDAL 2 (PID: HS0439)
 TIDE GAUGE:
 NAIL @ 10.0 FT MLLW
 LAT: 37 55 44.62 N
 LONG: 121 19 40.74 W

OTHER SAN JOAQUIN RIVER GAUGES:
 DAY MARKER 19 = 8.2 FT MLLW
 DAY MARKER 27 = 9.0 FT MLLW
 DAY MARKER 29 = 9.0 FT MLLW
 PORT OF STOCKTON TG #2 (37.951 N, 121.334 W) = 10.0 FT MLLW

CONTROLS:
 LOCATION: ANTIOCH
 NOAA STATION: 941 5064
 BENCHMARK: 5064-F (No PID)
 TIDE GAUGE:
 NAIL @ 10.15 FT MLLW
 LAT: 38 01 6.9393 N
 LONG: 121 48 56.7074 W



Feet
0 400 800 1,200

LEGEND		Contours	
--- Federal Navigation Channel	▨ Cable Area	— -35	
— Federal Navigation Center Line	□ Placement Area	— -34	
⋯ Cable Submarine	⊠ Anchorage Area	— -33	
- - - Cable Overhead	⊗ Obstruction Point	— -32	
— Contour Line	✦ Wrecks-Submerged	— -31	
		● Shoalest Sounding**	
		⊥ Beacon, General	
		◆ Red Navigation Buoy	
		◆ Green Navigation Buoy	

NOTES:
DRAWING NOT TO BE USED FOR NAVIGATION. ONLY CHANNEL CONDITION AT DATE OF SURVEY.
THE LOCATION OF ALL NAVIGATION AIDS ARE BASED ON INFORMATION PROVIDED BY THE U.S. COAST GUARD. BUOY LOCATIONS REPRESENT THE POSITION OF THE SINKER ONLY.
SOUNDINGS WERE TAKEN BY FATHOMETER AND ARE SHOWN TO THE NEAREST TENTH OF A FOOT.
SOUNDINGS ARE BASED ON THE DATUM OF MEAN LOWER LOW WATER AT THE LOCALITY.
PLANE GRID AND COORDINATES ARE BASED ON LAMBERT PROJECTION, NAD 83, ZONE II, CALIFORNIA AS DESCRIBED IN SPECIAL PUBLICATION NO. 235, PUBLISHED BY THE NATIONAL OCEAN SURVEY.
PROJECT DEPTH: -35'
VERTICAL DATUM: MLLW
THE LOCATION OF NAVIGATION AIDS ARE BASED ON AND PROVIDED BY THE U.S. COAST GUARD

LOCATION: PORT OF STOCKTON
NOAA STATION: 941 4887
BENCHMARK: 941 4867 TIDAL 2 (PID: HS0439)
TIDE GAUGE:
NAIL @ 10.0 FT MLLW
LAT: 37 55 44.62 N
LONG: 121 19 40.74 W

OTHER SAN JOAQUIN RIVER GAUGES:
DAY MARKER 19 = 8.2 FT MLLW
DAY MARKER 27 = 9.0 FT MLLW
DAY MARKER 29 = 9.0 FT MLLW
PORT OF STOCKTON TIG #2 (37.951 N, 121.334 W) = 10.0 FT MLLW

CONTROLS:
LOCATION: ANTIOCH
NOAA STATION: 941 5064
BENCHMARK: 5064-F (No PID)
TIDE GAUGE:
NAIL @ 10.15 FT MLLW
LAT: 38 01 6.9393 N
LONG: 121 48 56.7074 W



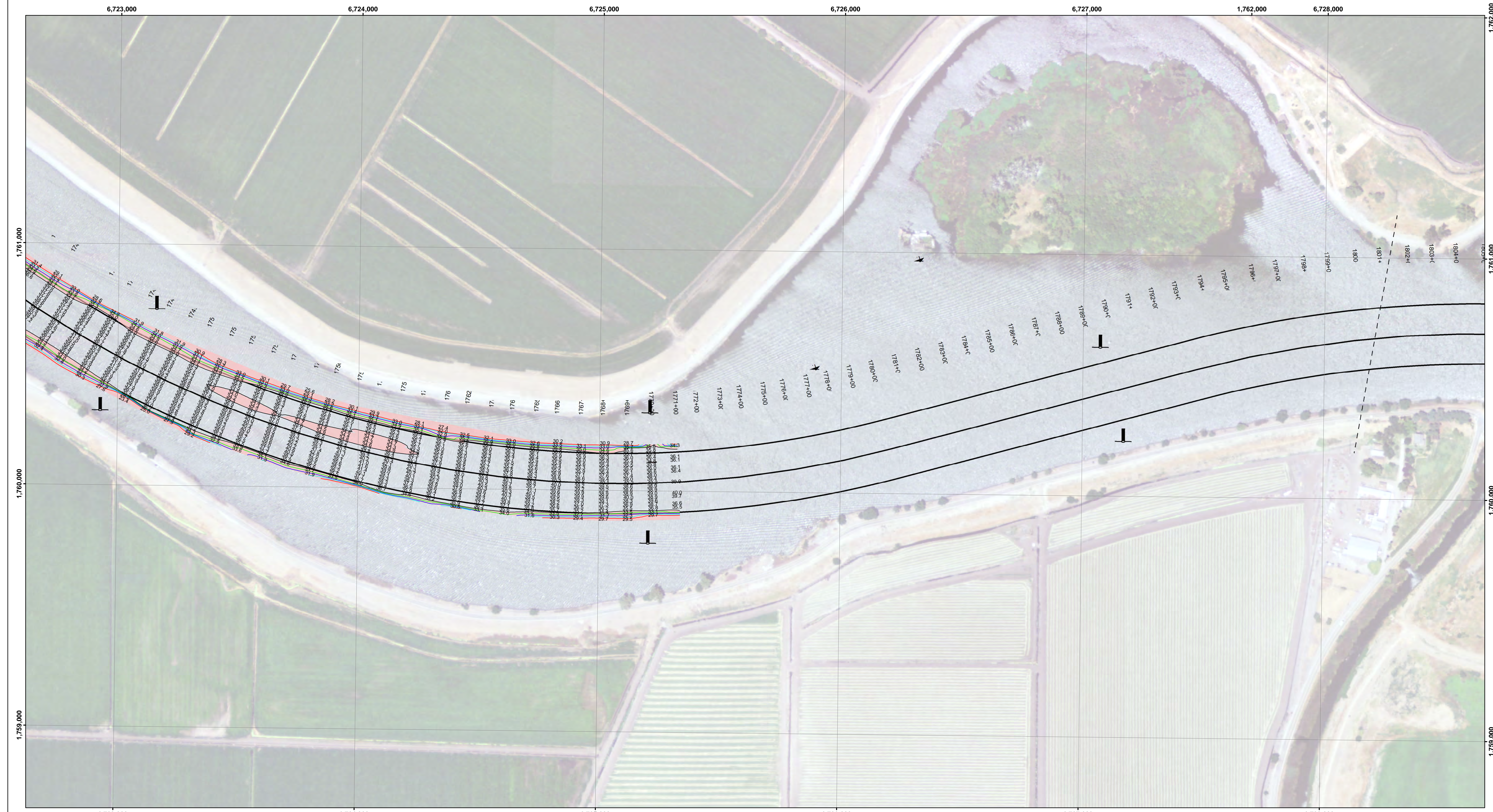
DISCLAIMER: The data represents the results of data collection/processing for a specific US Army Corps of Engineers project. The data is provided for informational purposes only. It is not intended for use in any other project or for any other purpose. The user is responsible for the accuracy of the data and the results of any application of the data for other than its intended purpose.

Access Constraints: The United States Government furnishes this information as a service to the public. It is not intended to be used for any other purpose than the one for which it was prepared. The user is responsible for the accuracy of the data and the results of any application of the data for other than its intended purpose.

Prepared Under the Direction of JOHN D. CUNNINGHAM LT. COLONEL, C.E., DISTRICT ENGINEER	Chart Date: Dec 04, 2019
Subject: Hydro Survey Team Leader	Designed by: PDT
Recommended: Chief, Hydro Survey Section	Checked by: PDT
Approved: Chief, Construction Branch	Drawn by: PDT

CALIFORNIA
SAN JOAQUIN COUNTY
STOCKTON RIVER
CONDITION SURVEY
02 DECEMBER 2019

Sheet Reference Number
31 of 39



DISCLAIMER: The data represents the results of data collection/processing for a specific US Army Corps of Engineers project. It is not intended for navigation. The user is responsible for the results of any application of the data for other than its intended purpose.

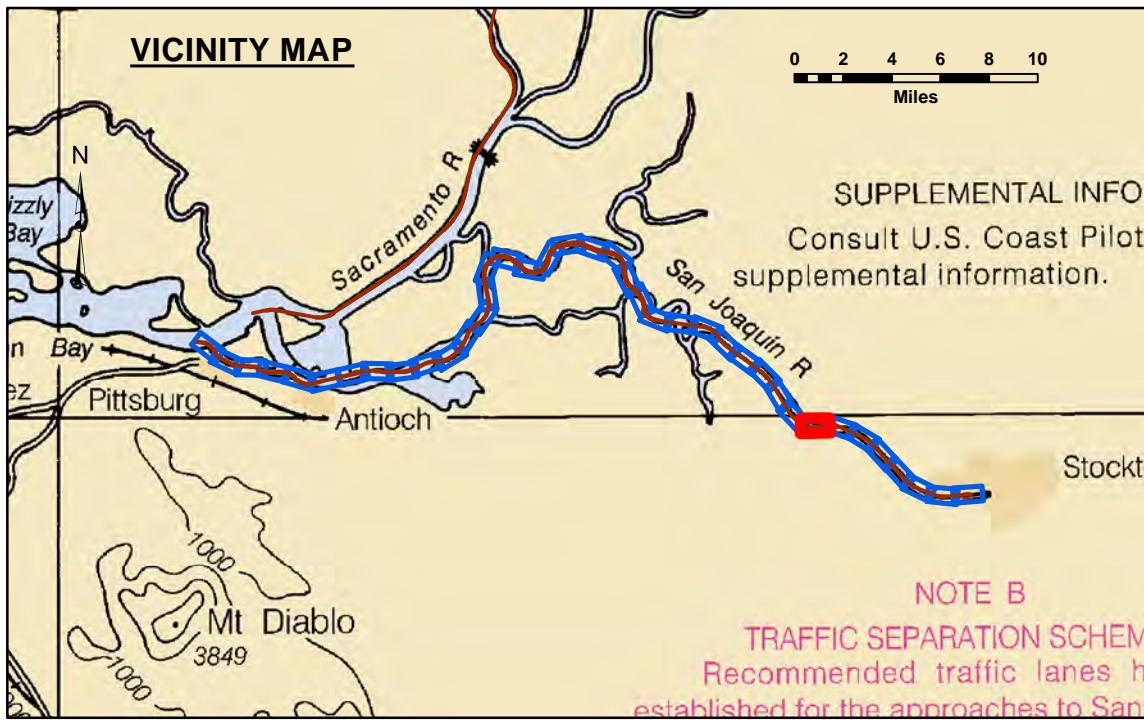
Access Constraints: The United States Government furnishes this information as a service to the public. It is not intended for navigation. The user is responsible for the results of any application of the data for other than its intended purpose.

Under no liability whatsoever to any person by reason of any use of the information and the data furnished. The United States shall be liable only for damages resulting from any use of the information and the data furnished. The United States shall be liable only for damages resulting from any use of the information and the data furnished.

Chart Date:	Dec 04, 2019
Designed by:	PDT
Drawn by:	PDT
Surveyed By:	PDT
Plotted By:	PDT
Checked By:	PDT

PREPARED UNDER THE DIRECTION OF
JOHN D. CUNNINGHAM
 LT. COLONEL, C.E. DISTRICT ENGINEER

Submitted: Hydro Survey Team Leader
 Recommended: Chief, Hydro Survey Section
 Approved: Chief, Construction Branch



Feet
0 400 800 1,200

LEGEND		Contours	
--- Federal Navigation Channel	▨ Cable Area	— -35	
— Federal Navigation Center Line	□ Placement Area	— -34	
..... Cable Submarine	▭ Anchorage Area	— -33	
- - - Cable Overhead	⊗ Obstruction Point	— -32	
— Contour Line	✦ Wrecks-Submerged	— -31	
	● Shoalest Sounding**		
	⊥ Beacon, General		
	◆ Red Navigation Buoy		
	◆ Green Navigation Buoy		
	■ Shoaling Area		

NOTES:
 DRAWING NOT TO BE USED FOR NAVIGATION. ONLY CHANNEL CONDITION AT DATE OF SURVEY.
 THE LOCATION OF ALL NAVIGATION AIDS ARE BASED ON INFORMATION PROVIDED BY THE U.S. COAST GUARD. BUOY LOCATIONS REPRESENT THE POSITION OF THE SINKER ONLY.
 SOUNDINGS WERE TAKEN BY FATHOMETER AND ARE SHOWN TO THE NEAREST TENTH OF A FOOT.
 SOUNDINGS ARE BASED ON THE DATUM OF MEAN LOWER LOW WATER AT THE LOCALITY.

PLANE GRID AND COORDINATES ARE BASED ON LAMBERT PROJECTION, NAD 83, ZONE II, CALIFORNIA AS DESCRIBED IN SPECIAL PUBLICATION NO. 235, PUBLISHED BY THE NATIONAL OCEAN SURVEY.

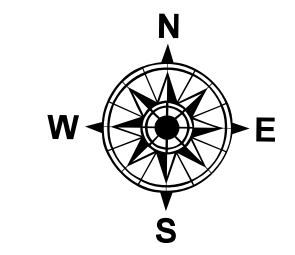
PROJECT DEPTH: -35'
 VERTICAL DATUM: MLLW

THE LOCATION OF NAVIGATION AIDS ARE BASED ON AND PROVIDED BY THE U.S. COAST GUARD

CONTROLS:
 LOCATION: ANTIOCH
 NOAA STATION: 941 5064
 BENCHMARK: 5064-F (No PID)
 TIDE GAUGE:
 Nail @ 10.15 FT MLLW
 LAT. 38 01 6.9393 N
 LONG: 121 48 56.7074 W

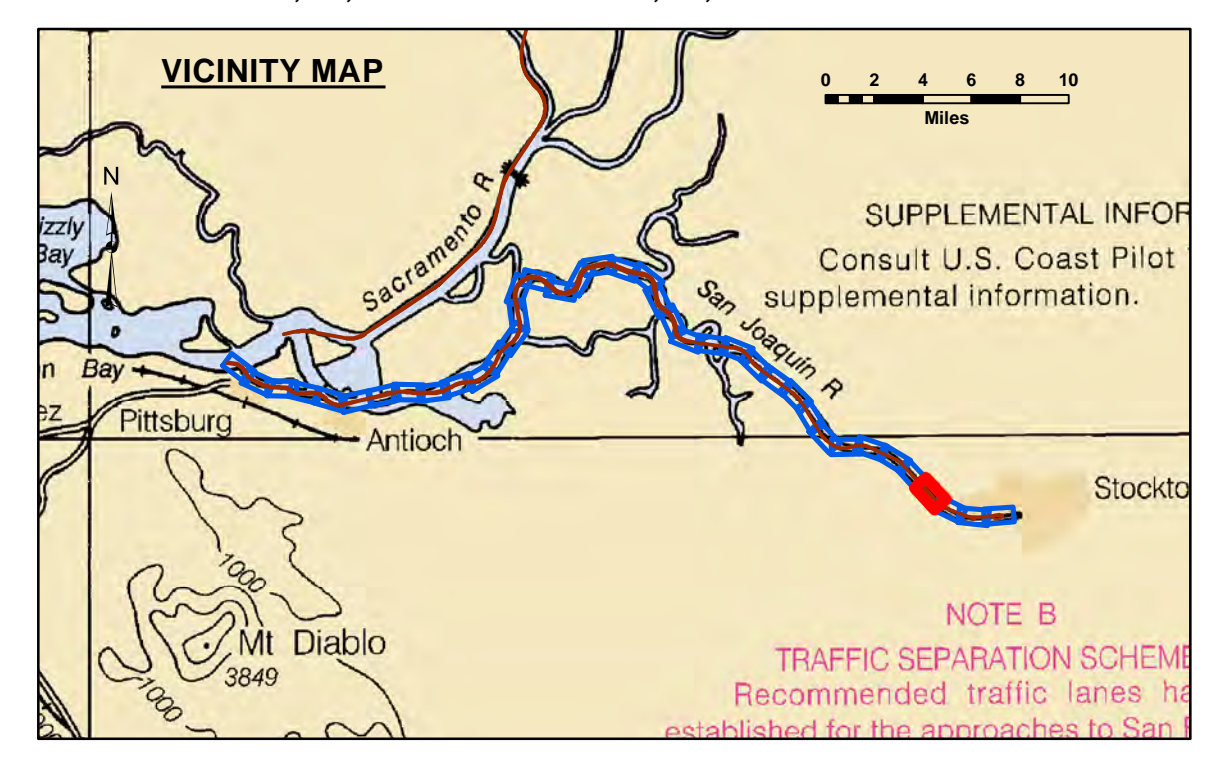
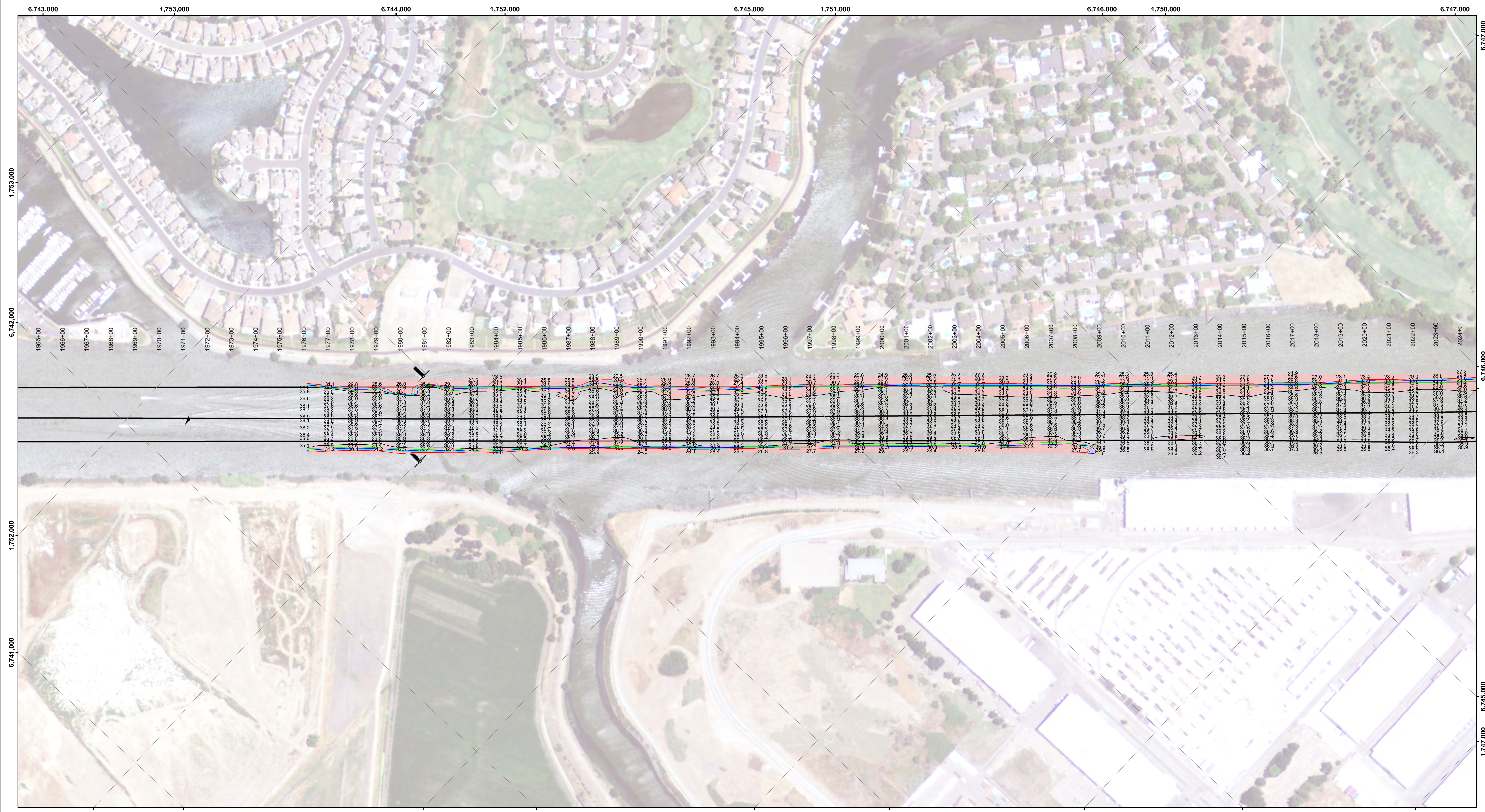
LOCATION: PORT OF STOCKTON
 NOAA STATION: 941 4867
 BENCHMARK: 941 4867 TIDAL 2 (PID: HS0439)
 TIDE GAUGE:
 Nail @ 10.0 FT MLLW
 LAT: 37 55 44.62 N
 LONG: 121 19 40.74 W

OTHER SAN JOAQUIN RIVER GAUGES:
 DAY MARKER 19 = 8.2 FT MLLW
 DAY MARKER 27 = 9.0 FT MLLW
 DAY MARKER 29 = 9.0 FT MLLW
 PORT OF STOCKTON TG #2 (37.951 N, 121.334 W) = 10.0 FT MLLW



CALIFORNIA
 SAN JOAQUIN COUNTY
STOCKTON RIVER
 CONDITION SURVEY
 02 DECEMBER 2019

Sheet Reference Number
32 of 39



Feet
0 400 800 1,200

--- Federal Navigation Channel	▨ Cable Area	■ Shoaling Area	— Contours
— Federal Navigation Center Line	□ Placement Area	● Shoalest Sounding**	— -35
..... Cable Submarine	▭ Anchorage Area	⊥ Beacon, General	— -34
- - - Cable Overhead	⊗ Obstruction Point	◆ Red Navigation Buoy	— -33
— Contour Line	✦ Wrecks-Submerged	◆ Green Navigation Buoy	— -32
			— -31

NOTES:
DRAWING NOT TO BE USED FOR NAVIGATION. ONLY CHANNEL CONDITION AT DATE OF SURVEY.
THE LOCATION OF ALL NAVIGATION AIDS ARE BASED ON INFORMATION PROVIDED BY THE U.S. COAST GUARD. BUOY LOCATIONS REPRESENT THE POSITION OF THE SINKER ONLY.
SOUNDINGS WERE TAKEN BY FATHOMETER AND ARE SHOWN TO THE NEAREST TENTH OF A FOOT.
SOUNDINGS ARE BASED ON THE DATUM OF MEAN LOWER LOW WATER AT THE LOCALITY.

PLANE GRID AND COORDINATES ARE BASED ON LAMBERT PROJECTION, NAD 83, ZONE II, CALIFORNIA AS DESCRIBED IN SPECIAL PUBLICATION NO. 235, PUBLISHED BY THE NATIONAL OCEAN SURVEY.

PROJECT DEPTH: -35'
VERTICAL DATUM: MLLW
THE LOCATION OF NAVIGATION AIDS ARE BASED ON AND PROVIDED BY THE U.S. COAST GUARD

CONTROLS:
LOCATION: ANTIOCH
NOAA STATION: 941 5064
BENCHMARK: 5064-F (No PID)
TIDE GAUGE:
NAIL @ 10.15 FT MLLW
LAT: 38 01 6.9393 N
LONG: 121 48 56.7074 W

LOCATION: PORT OF STOCKTON
NOAA STATION: 941 4867
BENCHMARK: 941 4867 TIDAL 2 (PID: HS0439)
TIDE GAUGE:
NAIL @ 10.0 FT MLLW
LAT: 37 55 44.62 N
LONG: 121 19 40.74 W

OTHER SAN JOAQUIN RIVER GAUGES:
DAY MARKER 19 = 8.2 FT MLLW
DAY MARKER 27 = 9.0 FT MLLW
DAY MARKER 29 = 9.0 FT MLLW
PORT OF STOCKTON TIG #2 (37.951 N, 121.334 W) = 10.0 FT MLLW



DISCLAIMER: The data represents the results of data collection/processing for a specific US Army Corps of Engineers project. The data is only valid for its intended use, current, time and accuracy specifications. The user is responsible for the results of any of the application of the data for other than its intended purpose.

Access Constraints: The United States Government furnishes this information as it is received, without any warranty, expressed or implied concerning the accuracy, completeness, or timeliness of the information. The United States shall be under no liability whatsoever to any person by reason of any use of the information provided hereunder. The recipient may not transfer this information to others without first obtaining the permission of the United States Government.

Chart Date:	Dec 04, 2019
Designed by:	PDT
Drawn by:	PDT
Surveyed By:	PDT
Plotted By:	PDT
Checked By:	PDT

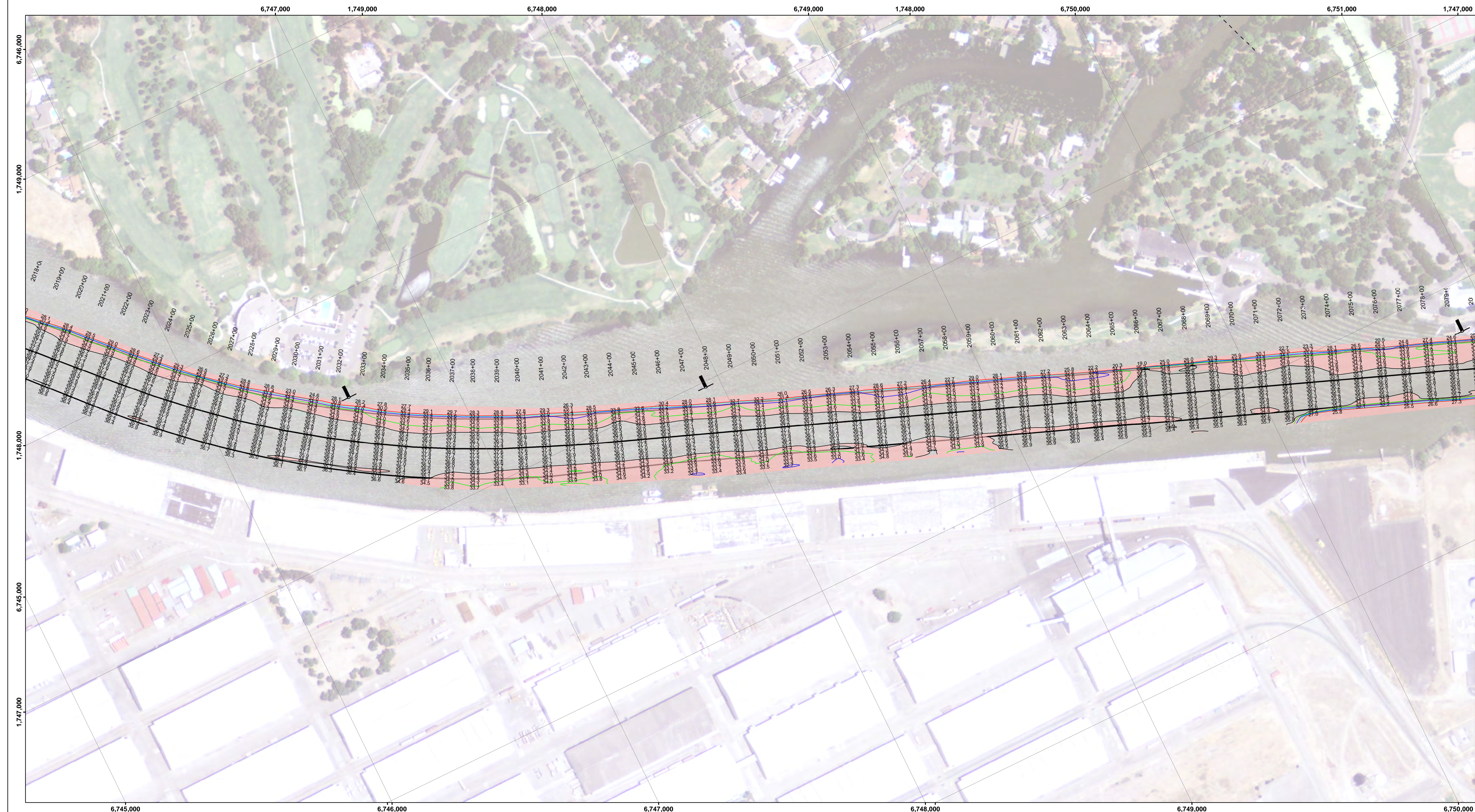
PREPARED UNDER THE DIRECTION OF
JOHN D. CUNNINGHAM
LT. COLONEL, C.E. DISTRICT ENGINEER

Submitted: Hydro Survey Team Leader
Recommended: Chief, Hydro Survey Section
Approved: Chief, Construction Branch

CALIFORNIA
STOCKTON RIVER
CONDITION SURVEY
02 DECEMBER 2019

SAN JOAQUIN COUNTY

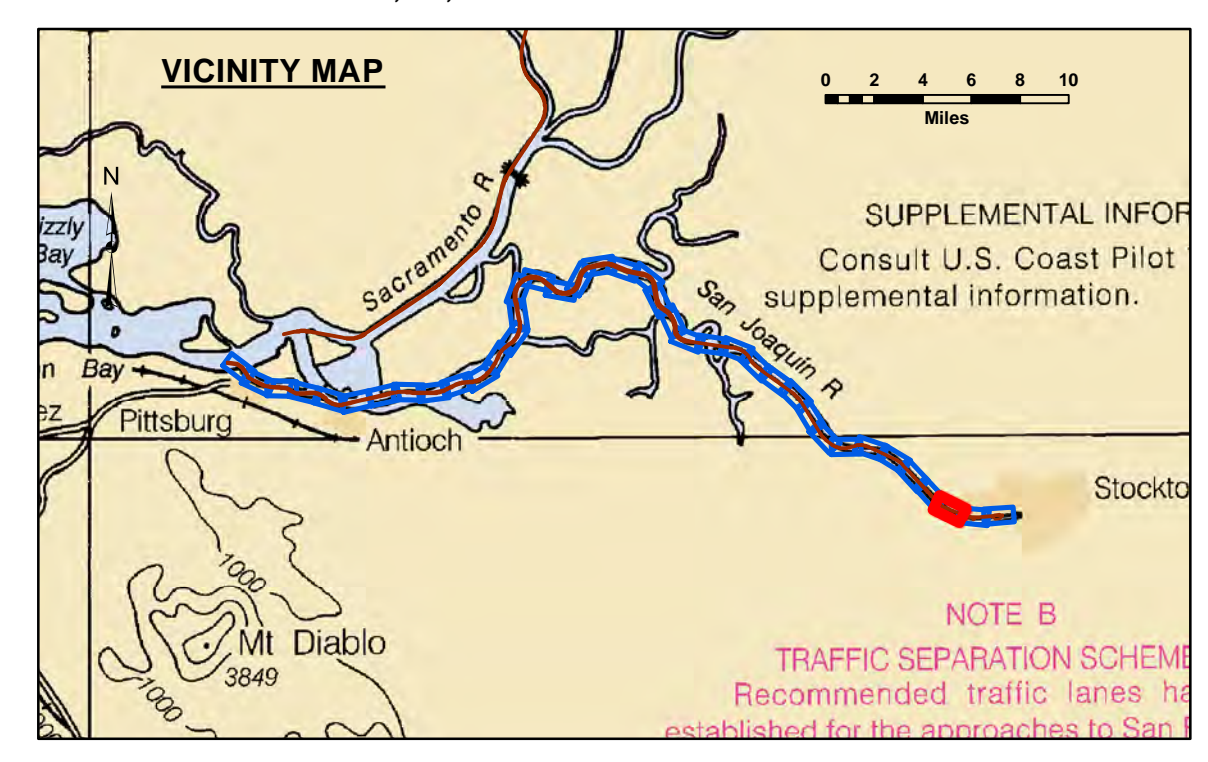
Sheet Reference Number
36 of 39



DISCLAIMER
 The data represents the results of data collection/processing for a specific US Army Corps of Engineers project. The user is responsible for the results of any application of the data for other than its intended purpose. The user is responsible for the results of any application of the data for other than its intended purpose. The user is responsible for the results of any application of the data for other than its intended purpose. The user is responsible for the results of any application of the data for other than its intended purpose.

Prepared Under the Direction of JOHN D. CUNNINGHAM LT Colonel, C.E. District Engineer	Chart Date: Dec 04, 2019
Submitted: Hydro Survey Team Leader	Designed by: PDT
Recommended: Chief, Hydro Survey Section	Drawn by: PDT
Approved: Chief, Construction Branch	

CALIFORNIA
 SAN JOAQUIN COUNTY
STOCKTON RIVER
 CONDITION SURVEY
 02 DECEMBER 2019



Feet
0 400 800 1,200

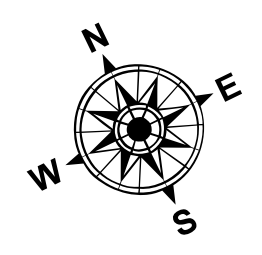
LEGEND		Contours	
--- Federal Navigation Channel	▨ Cable Area	— -35	
— Federal Navigation Center Line	□ Placement Area	— -34	
..... Cable Submarine	▭ Anchorage Area	— -33	
- - - Cable Overhead	⊗ Obstruction Point	— -32	
— Contour Line	✦ Wrecks-Submerged	— -31	
		● Shoalest Sounding**	
		⊥ Beacon, General	
		♦ Red Navigation Buoy	
		◆ Green Navigation Buoy	

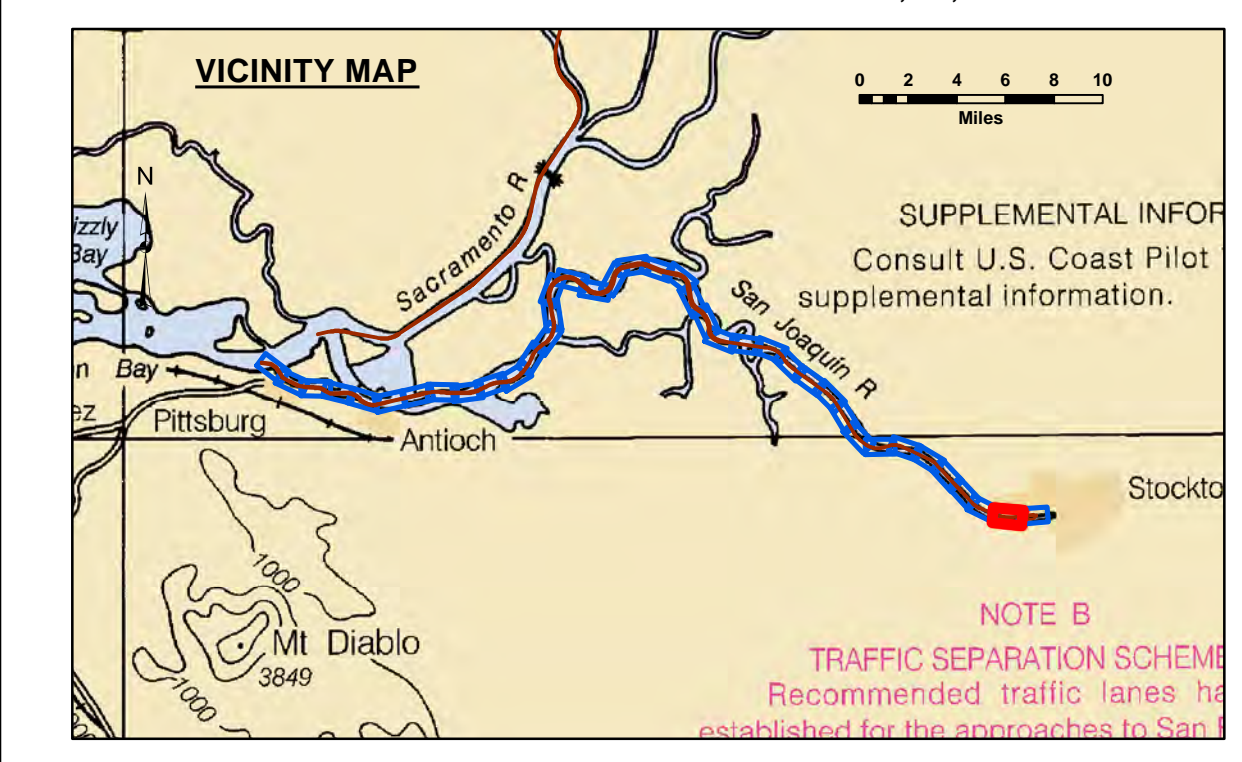
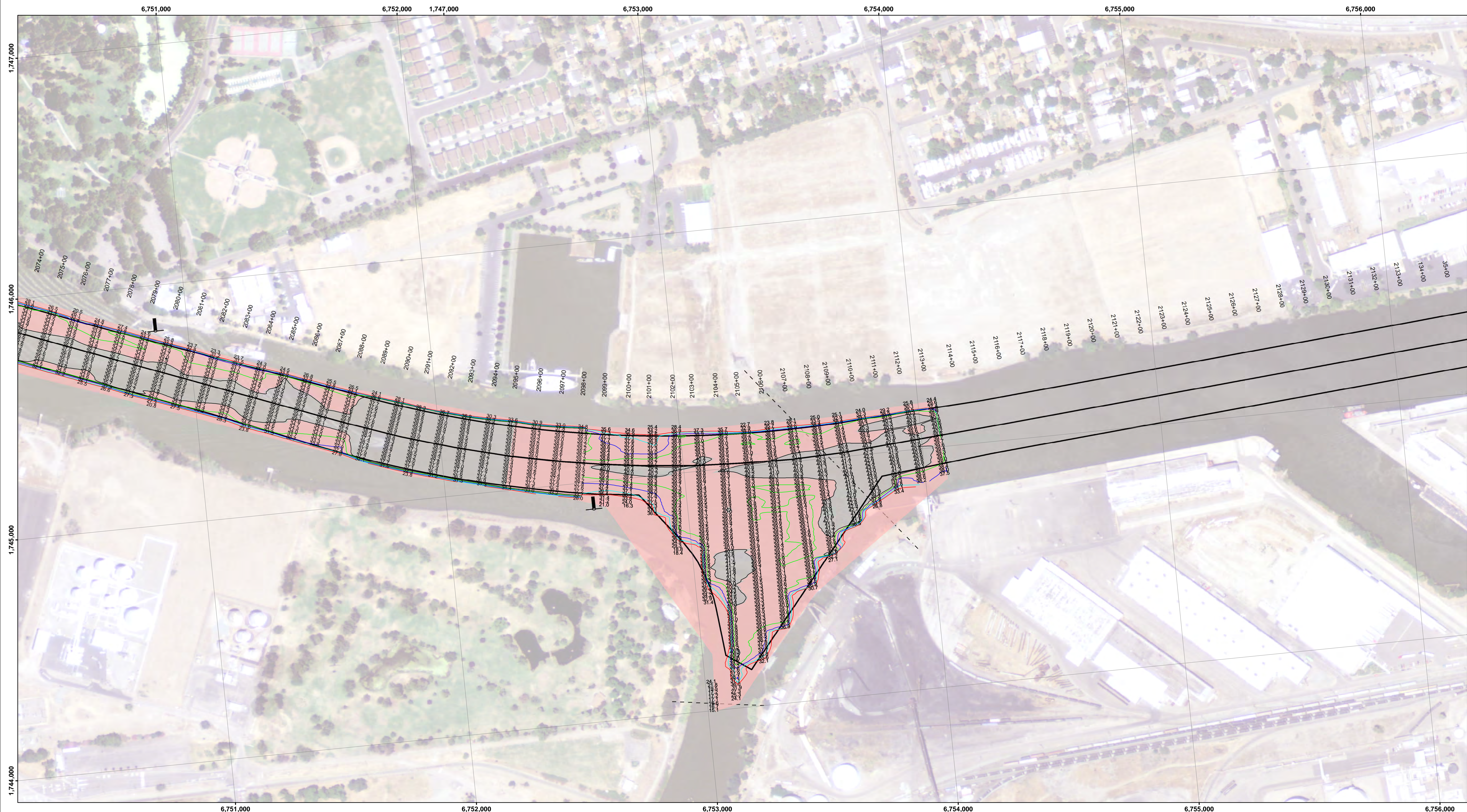
NOTES:
 DRAWING NOT TO BE USED FOR NAVIGATION. ONLY CHANNEL CONDITION AT DATE OF SURVEY.
 THE LOCATION OF ALL NAVIGATION AIDS ARE BASED ON INFORMATION PROVIDED BY THE U.S. COAST GUARD. BUOY LOCATIONS REPRESENT THE POSITION OF THE SINKER ONLY.
 SOUNDINGS WERE TAKEN BY FATHOMETER AND ARE SHOWN TO THE NEAREST TENTH OF A FOOT.
 SOUNDINGS ARE BASED ON THE DATUM OF MEAN LOWER LOW WATER AT THE LOCALITY.
 PLANE GRID AND COORDINATES ARE BASED ON LAMBERT PROJECTION, NAD 83, ZONE II, CALIFORNIA AS DESCRIBED IN SPECIAL PUBLICATION NO. 235, PUBLISHED BY THE NATIONAL OCEAN SURVEY.
 PROJECT DEPTH: -35'
 VERTICAL DATUM: MLLW
 THE LOCATION OF NAVIGATION AIDS ARE BASED ON AND PROVIDED BY THE U.S. COAST GUARD

LOCATION: PORT OF STOCKTON
 NOAA STATION: 941 4867
 BENCHMARK: 941 4867 TIDAL 2 (PID: HS0439)
 TIDE GAUGE:
 NAIL @ 10.0 FT MLLW
 LAT: 37 55 44.62 N
 LONG: 121 19 40.74 W

OTHER SAN JOAQUIN RIVER GAUGES:
 DAY MARKER 19 = 8.2 FT MLLW
 DAY MARKER 27 = 9.0 FT MLLW
 DAY MARKER 29 = 9.0 FT MLLW
 PORT OF STOCKTON TG #2 (37.951 N, 121.334 W) = 10.0 FT MLLW

CONTROLS:
 LOCATION: ANTIOCH
 NOAA STATION: 941 5064
 BENCHMARK: 5064-F (No PID)
 TIDE GAUGE:
 NAIL @ 10.15 FT MLLW
 LAT: 38 01 6.9393 N
 LONG: 121 48 56.7074 W





LEGEND		
--- Federal Navigation Channel	▨ Cable Area	■ Shoaling Area
— Federal Navigation Center Line	□ Placement Area	● Shoalest Sounding**
..... Cable Submarine	⊠ Anchorage Area	⊥ Beacon, General
- - - Cable Overhead	⊗ Obstruction Point	◆ Red Navigation Buoy
— Contour Line	✦ Wrecks-Submerged	◆ Green Navigation Buoy

NOTES:
DRAWING NOT TO BE USED FOR NAVIGATION. ONLY CHANNEL CONDITION AT DATE OF SURVEY.
THE LOCATION OF ALL NAVIGATION AIDS ARE BASED ON INFORMATION PROVIDED BY THE U.S. COAST GUARD. BUOY LOCATIONS REPRESENT THE POSITION OF THE SINKER ONLY.
SOUNDINGS WERE TAKEN BY FATHOMETER AND ARE SHOWN TO THE NEAREST TENTH OF A FOOT.
SOUNDINGS ARE BASED ON THE DATUM OF MEAN LOWER LOW WATER AT THE LOCALITY.
PLANE GRID AND COORDINATES ARE BASED ON LAMBERT PROJECTION, NAD 83, ZONE II, CALIFORNIA AS DESCRIBED IN SPECIAL PUBLICATION NO. 235, PUBLISHED BY THE NATIONAL OCEAN SURVEY.
PROJECT DEPTH: -35'
VERTICAL DATUM: MLLW
THE LOCATION OF NAVIGATION AIDS ARE BASED ON AND PROVIDED BY THE U.S. COAST GUARD

LOCATION: PORT OF STOCKTON
NOAA STATION: 941 4887
BENCHMARK: 941 4867 TIDAL 2 (PID: HS0439)
TIDE GAUGE:
NAIL @ 10.0 FT MLLW
LAT: 37 55 44.62 N
LONG: 121 19 40.74 W

OTHER SAN JOAQUIN RIVER GAUGES:
DAY MARKER 19 = 8.2 FT MLLW
DAY MARKER 27 = 9.0 FT MLLW
DAY MARKER 29 = 9.0 FT MLLW
PORT OF STOCKTON TIG #2 (37.951 N, 121.334 W) = 10.0 FT MLLW

CONTROLS:
LOCATION: ANTIOCH
NOAA STATION: 941 5064
BENCHMARK: 5064-F (No PID)
TIDE GAUGE:
NAIL @ 10.15 FT MLLW
LAT: 38 01 6.9393 N
LONG: 121 48 56.7074 W



DISCLAIMER: The United States Government furnishes this information as it is received, without any warranty, expressed or implied, concerning the accuracy, completeness, or timeliness of the information. The United States shall be under no liability whatsoever to any person by reason of any use of the information provided hereunder, and the recipient shall be responsible for the accuracy of the information used for any purpose other than that intended by the United States Government. The recipient may not transfer this data to others without the written consent of the United States Government.

Prepared Under the Direction of JOHN D. CUNNINGHAM LT. COLONEL, C.E., DISTRICT ENGINEER	Chart Date: Dec 04, 2019
Subproject: Hydro Survey Team Leader	Designed by: PDT
Recommended: Chief, Hydro Survey Section	Checked by: PDT
Approved: Chief, Construction Branch	Drawn by: PDT

CALIFORNIA
STOCKTON RIVER
SEDIMENT TRAP
CONDITION SURVEY
02 DECEMBER 2019

SAN JOAQUIN COUNTY
Sheet Reference Number
38 of 39