

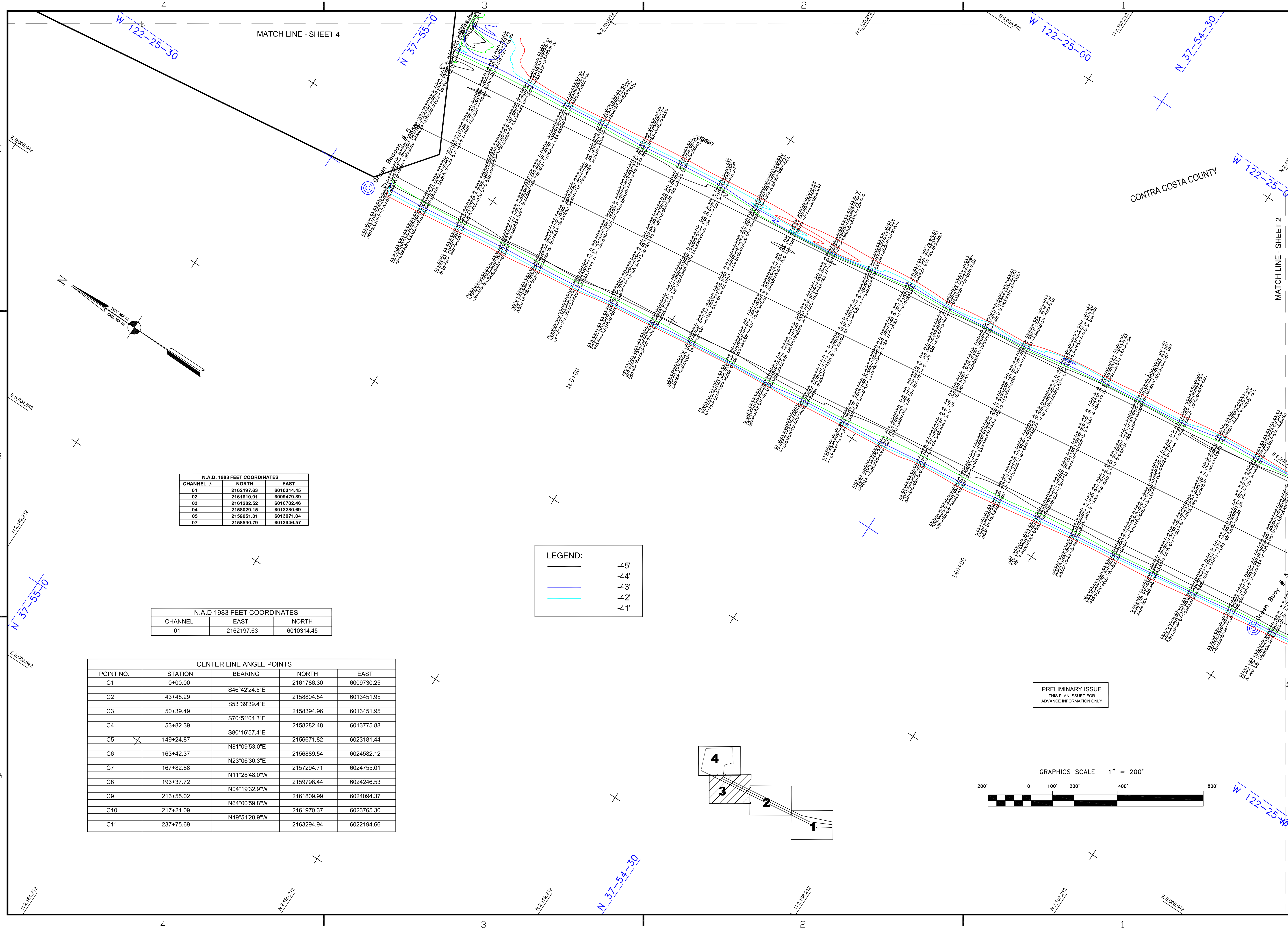
|  |
|--|
|  |
|  |

| Mark | Description | Date | Appr. |
|------|-------------|------|-------|
|      |             |      |       |
|      |             |      |       |

|                     |                    |                  |                    |                     |                    |
|---------------------|--------------------|------------------|--------------------|---------------------|--------------------|
| DESIGNED BY:<br>PDT | CHECKED BY:<br>PDT | DRAWN BY:<br>PDT | DATE:<br>3/08/2010 | SHEET NO.<br>3 OF 4 | DRAWING NO.<br>9 2 |
|                     |                    |                  |                    |                     |                    |

CALIFORNIA  
CONTRA COSTA COUNTY  
**RICHMOND HARBOR**  
SOUTHAMPTON SOUTH  
CONDITION SURVEY  
3 MARCH 2010

Sheet reference number  
**C3**



N.A.D. 1983 FEET COORDINATES

| CHANNEL | NORTH      | EAST       |
|---------|------------|------------|
| 01      | 2162197.63 | 6010314.45 |
| 02      | 2161610.01 | 6009479.89 |
| 03      | 2161282.52 | 6010702.46 |
| 04      | 2158029.15 | 6013280.89 |
| 05      | 2159051.01 | 6013071.04 |
| 07      | 2158590.79 | 6013946.57 |

N.A.D. 1983 FEET COORDINATES

| CHANNEL | EAST       | NORTH      |
|---------|------------|------------|
| 01      | 2162197.63 | 6010314.45 |

CENTER LINE ANGLE POINTS

| POINT NO. | STATION   | BEARING       | NORTH      | EAST       |
|-----------|-----------|---------------|------------|------------|
| C1        | 0+00.00   | S46°42'24.5"E | 2161786.30 | 6009730.25 |
| C2        | 43+48.29  | S53°39'39.4"E | 2158804.54 | 6013451.95 |
| C3        | 50+39.49  | S70°51'04.3"E | 2158394.96 | 6013451.95 |
| C4        | 53+82.39  | S80°16'57.4"E | 2158282.48 | 6013775.88 |
| C5        | 149+24.87 | N81°09'53.0"E | 2156671.82 | 6023181.44 |
| C6        | 163+42.37 | N23°06'30.3"E | 2156889.54 | 6024582.12 |
| C7        | 167+82.88 | N11°28'48.0"W | 2157294.71 | 6024755.01 |
| C8        | 193+37.72 | N04°19'32.9"W | 2159798.44 | 6024246.53 |
| C9        | 213+55.02 | N64°00'59.8"W | 2161809.99 | 6024094.37 |
| C10       | 217+21.09 | N49°51'28.9"W | 2161970.37 | 6023765.30 |
| C11       | 237+75.69 |               | 2163294.94 | 6022194.66 |

LEGEND:

|               |      |
|---------------|------|
| (Red line)    | -45' |
| (Orange line) | -44' |
| (Yellow line) | -43' |
| (Green line)  | -42' |
| (Blue line)   | -41' |

PRELIMINARY ISSUE  
THIS PLAN ISSUED FOR  
ADVANCE INFORMATION ONLY

