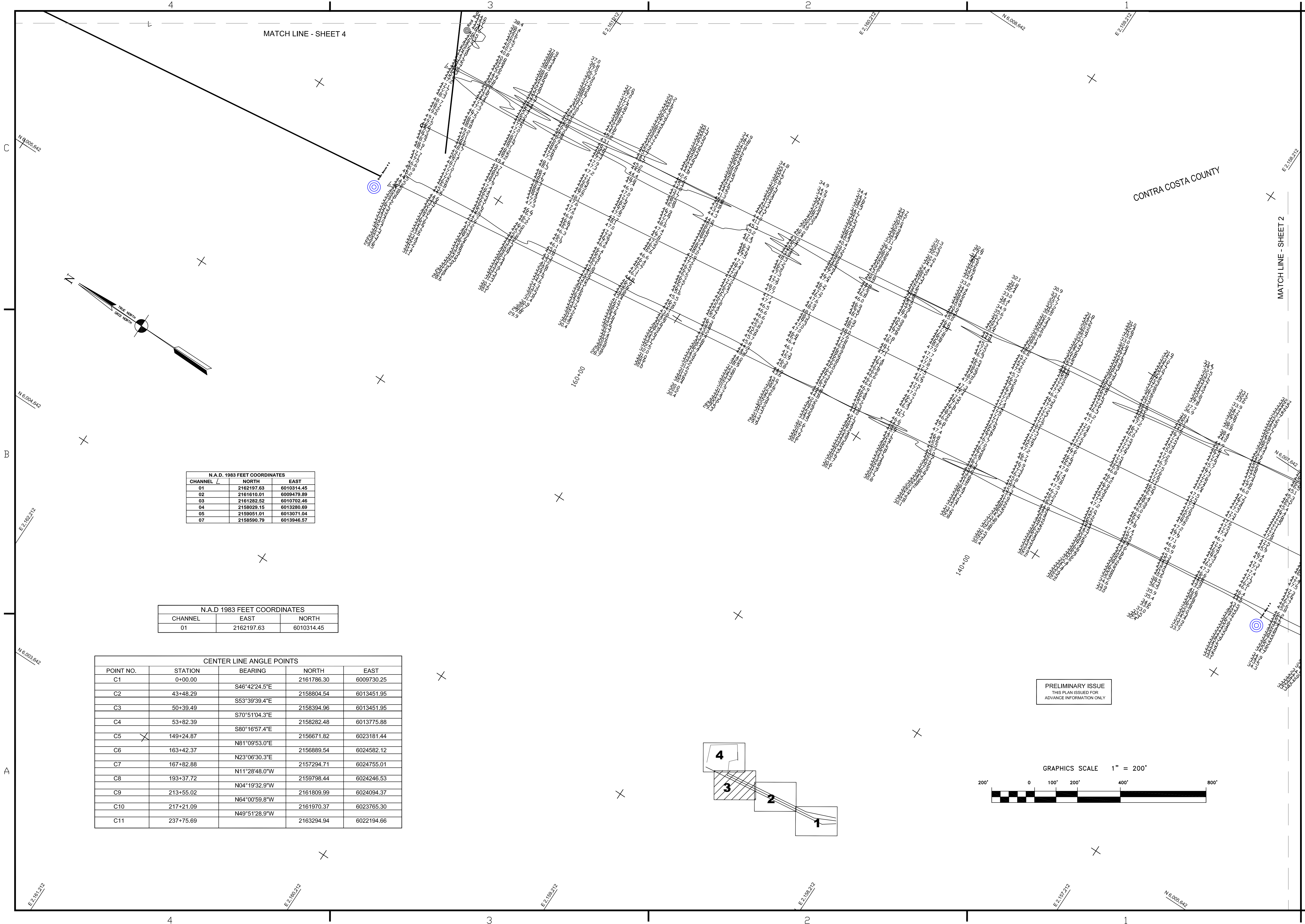


Mark	Description	Date	Appr.

DESIGNED BY:	CRAIG W. KILEY LT. COLONEL, C.E., DISTRICT ENGINEER
CHECKED BY:	TVM EC
DATE:	07/24/2007
SHEET NO.	3 OF 4
DRAWING NO.	2
APPROVAL RECOMMENDED:	PREPARED UNDER THE DIRECTION OF
APPROVED:	CRAIG W. KILEY
Chief, Construction Branch	

CALIFORNIA  
CONTRA COSTA COUNTY  
**RICHMOND HARBOR  
SOUTH HAMPTON SHOALS  
POSTDREDGE SURVEY  
13 & 18 JULY 2007**

Sheet  
reference  
number  
**C3**



N.A.D. 1983 FEET COORDINATES

CHANNEL	NORTH	EAST
01	2162197.63	6010314.45
02	2161610.01	6009479.89
03	2161282.52	6010702.46
04	2156029.15	6013260.69
05	2159051.01	6013071.04
07	2158590.79	6013946.57

N.A.D. 1983 FEET COORDINATES

CHANNEL	EAST	NORTH
01	2162197.63	6010314.45

CENTER LINE ANGLE POINTS

POINT NO.	STATION	BEARING	NORTH	EAST
C1	0+00.00	S46°42'24.5"E	2161786.30	6009730.25
C2	43+48.29	S53°39'39.4"E	2158804.54	6013451.95
C3	50+39.49	S70°51'04.3"E	2158394.96	6013451.95
C4	53+82.39	S80°16'57.4"E	2158282.48	6013775.88
C5	149+24.87	N81°09'53.0"E	2156671.82	6023181.44
C6	163+42.37	N23°06'30.3"E	2156889.54	6024562.12
C7	167+82.88	N11°28'48.0"W	2157294.71	6024755.01
C8	193+37.72	N04°19'32.9"W	2159798.44	6024246.53
C9	213+55.02	N64°00'59.8"W	2161809.99	6024094.37
C10	217+21.09	N49°51'28.9"W	2161970.37	6023765.30
C11	237+75.69		2163294.94	6022194.66

