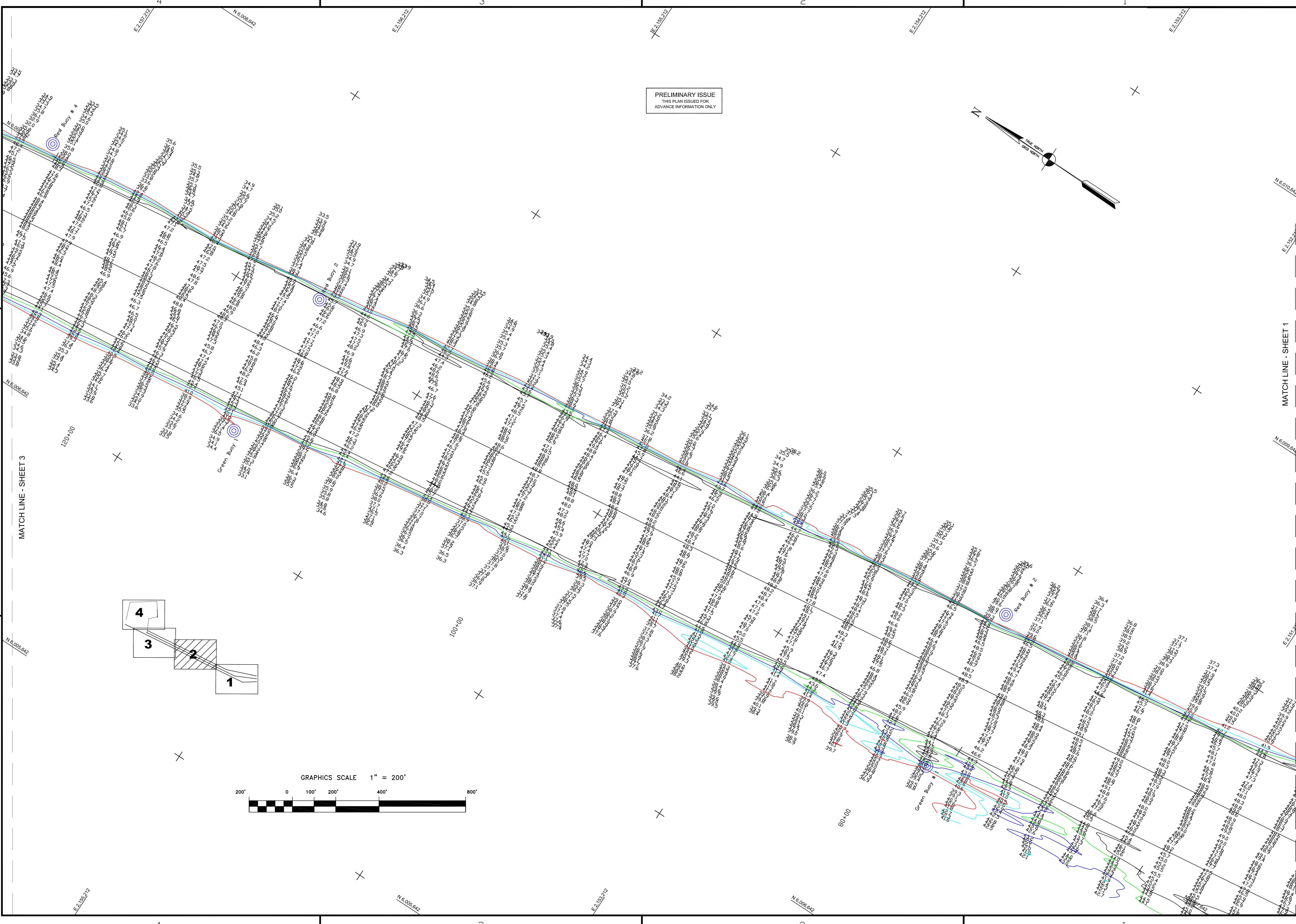
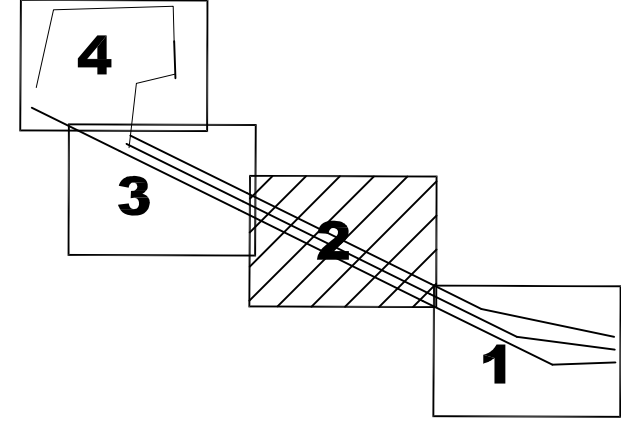
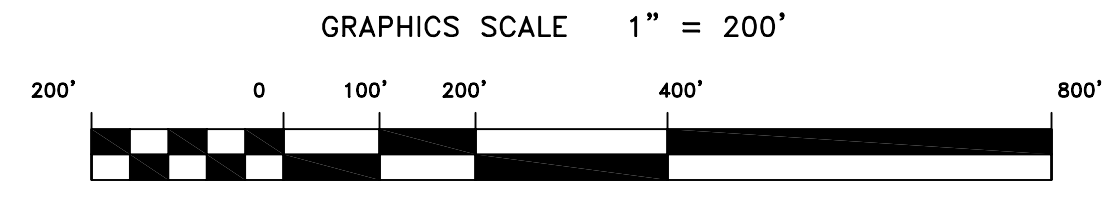
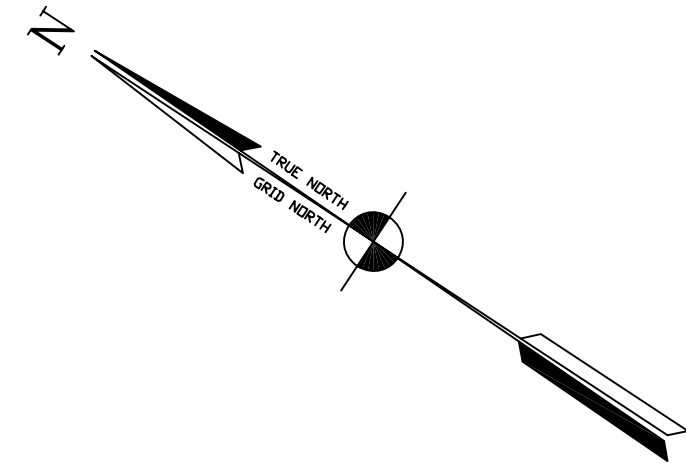


PRELIMINARY ISSUE  
THIS PLAN ISSUED FOR  
ADVANCE INFORMATION ONLY



US Army Corps  
of Engineers  
San Francisco District  
1455 Market Street  
San Francisco, CA 94103

Mark	Description	Date	Appr.

SUBMITTED:	MC	DESIGNED BY:	TVW	CHECKED BY:	EWC
Hydro Survey Team Leader		DATE:	2/4/2008	SHEET NO.	2 OF 4
APPROVAL RECOMMENDED:				DRAWING NO.	356
CHIEF, Technical Support Section		PREPARED UNDER THE DIRECTION OF			
APPROVED:		CRAIG W. KILEY			
Chief, Construction Branch		LT. COLONEL, C.E., DISTRICT ENGINEER			

CALIFORNIA  
CONTRA COSTA COUNTY  
RICHMOND HARBOR  
SOUTH HAMPTON SHOALS  
CONDITION SURVEY  
02 FEBRUARY 2008

Sheet  
reference  
number  
**C2**