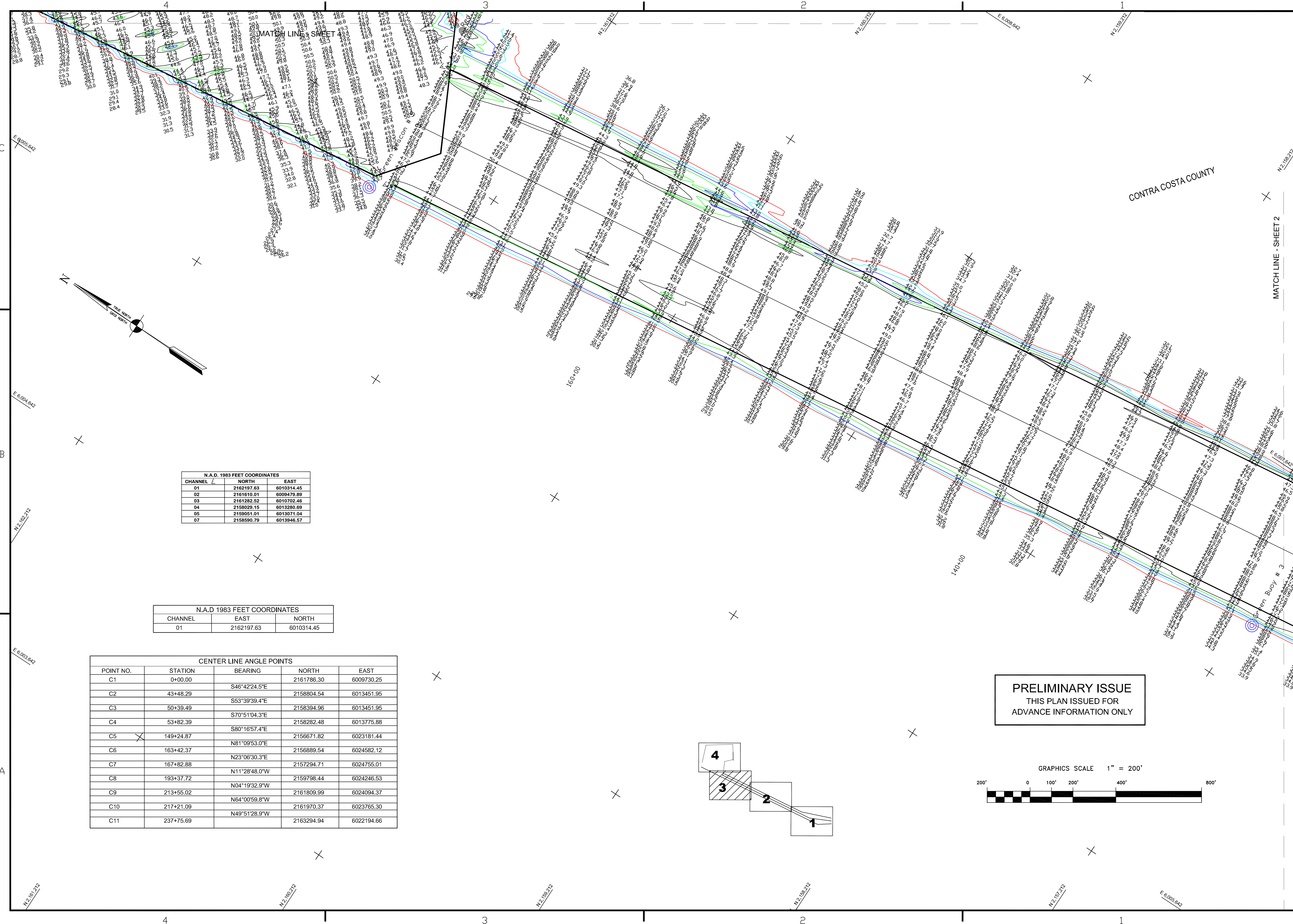


Mark	Description	Date	Appr.

DESIGNED BY:	MC	CHECKED BY:	TVW EMC
Hydro Survey Team Leader		DRAWING NO.	359
APPROVAL RECOMMENDED:		SHEET NO.	3 OF 4
DATE:	8/25/2008		9 2
PREPARED UNDER THE DIRECTION OF:	LAURENCE M. FARRELL		
APPROVED:	LT. COLONEL, C.E., DISTRICT ENGINEER		

CALIFORNIA  
**RICHMOND OUTER HARBOR**  
 SOUTH HAMPTON SHOALS  
 CONDITION SURVEY  
 14 & 19 AUGUST 2008

Sheet reference  
 number  
**C3**



N.A.D. 1983 FEET COORDINATES		
CHANNEL	NORTH	EAST
01	2162197.63	6010314.45
02	2161610.01	6009479.89
03	2161292.52	6010702.46
04	2158029.15	6013280.69
05	2158051.01	6013071.04
07	2158590.79	6013946.57

N.A.D. 1983 FEET COORDINATES		
CHANNEL	EAST	NORTH
01	2162197.63	6010314.45

CENTER LINE ANGLE POINTS				
POINT NO.	STATION	BEARING	NORTH	EAST
C1	0+00.00	S46°42'24.5"E	2161786.30	6009730.25
C2	43+48.29	S53°39'39.4"E	2158804.54	6013451.95
C3	50+39.49	S70°51'04.3"E	2158394.96	6013451.95
C4	53+82.39	S80°16'57.4"E	2156671.82	6023181.44
C5	149+24.87	N81°09'53.0"E	2156671.82	6023181.44
C6	163+42.37	N23°06'30.3"E	2159798.44	6024582.12
C7	167+82.88	N11°28'48.0"W	2157294.71	6024755.01
C8	193+37.72	N04°19'32.9"W	2159798.44	6024246.53
C9	213+55.02	N64°00'59.8"W	2161809.99	6024094.37
C10	217+21.09	N49°51'28.9"W	2161970.37	6023765.30
C11	237+75.69		2163294.94	6022194.66

