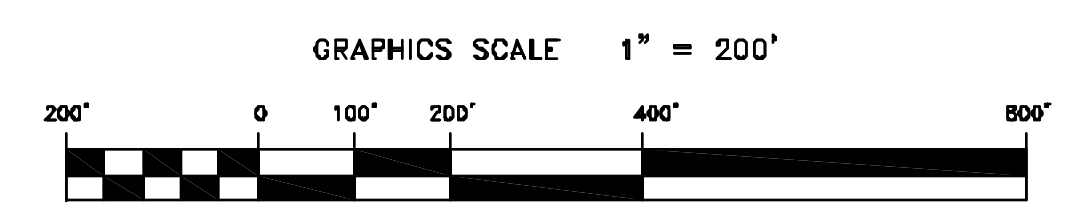
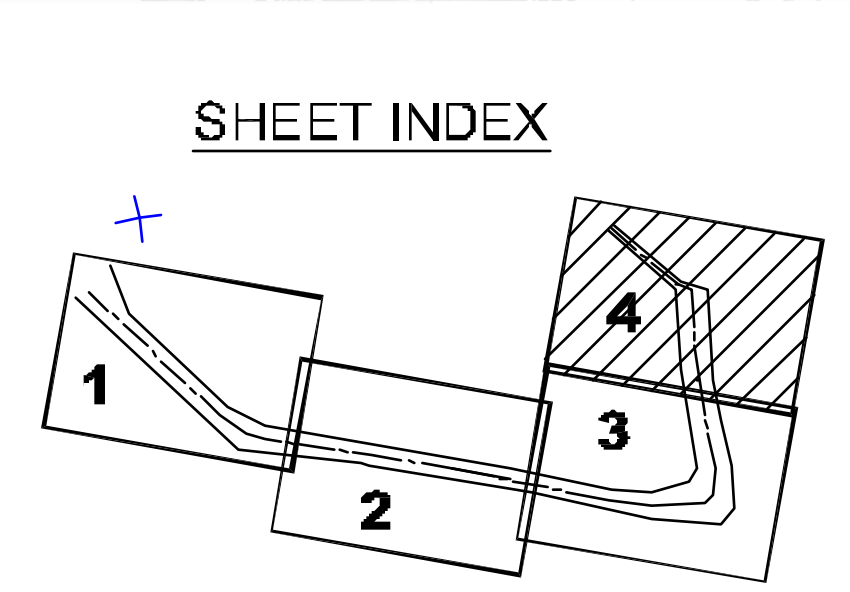


N.A.D. 1983 FEET COORDINATES		
CHANNEL /	NORTH	EAST
21	2161818.86	8028718.06
22	2161806.18	8024470.68
23	2161828.13	8023686.08
24	2162011.81	8023671.48
25	2162218.51	8022130.20
26	2163871.87	8022258.12

N.A.D 1983 FEET COORDINATES		
CHANNEL /	EAST	NORTH
02	2'588'72.57	8028299.00
09	2'57558.10	8027987.38
10	2'58366.75	8023787.89
11	2'57058.34	8022719.34
12	2'58256.20	8024797.57
13	2'58977.13	8023718.20
14	2'58630.55	8028333.87
15	2'57243.59	8024977.57
16	2'57520.28	8028296.38
17	2'57577.89	8024244.88
18	2'58698.74	8024797.57
19	2'58898.13	8023853.70
20	2'58700.15	8024628.98

PRELIMINARY ISSUE
THIS PLAN ISSUED FOR
ADVANCE INFORMATION ONLY



US Army Corps of Engineers
San Francisco District
1455 Market Street
San Francisco, CA 94103

Mark	Description	Date	Appr.

DESIGNED BY: PC
CHECKED BY: EMC
DATE: 06/12/2009
SHEET NO. 1 OF 4
DRAWING NO. 362
PREPARED UNDER THE DIRECTION OF
LAURENCE M. FARRELL
LT. COLONEL, C.E., DISTRICT ENGINEER

SUBMITTED:
APPROVAL RECOMMENDED:
APPROVED:
CHIEF, Construction Branch

CALIFORNIA
ALAMEDA COUNTY
RICHMOND INNER HARBOR
PREDECESSOR SURVEY
20, 21 & 28 MAY
05 & 10 JUNE 2009

Sheet reference number
C4

MATCHLINE - SHEET 3