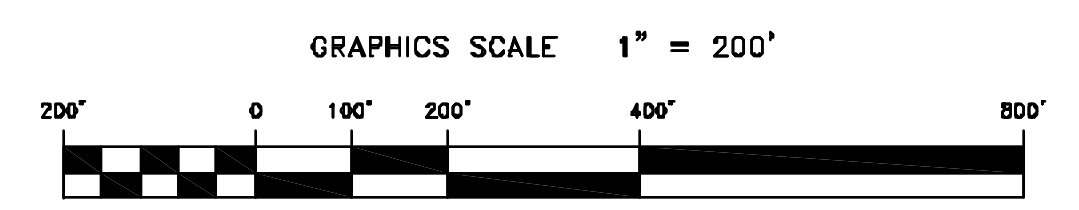
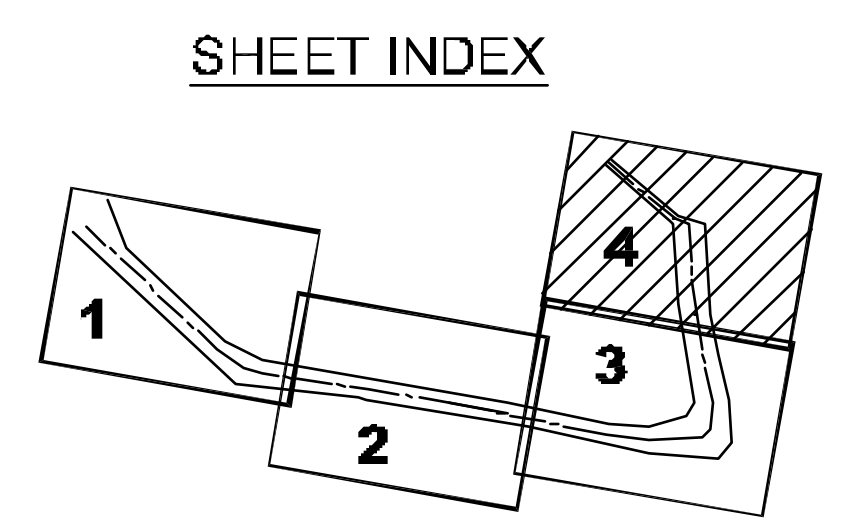


CHANNEL	NORTH	EAST
21	2161813.86	6028718.06
22	2161806.13	6024470.69
23	2161829.13	6023659.09
24	2162011.61	6023871.48
25	2162216.51	6022130.20
26	2162571.87	6022259.12

CHANNEL	EAST	NORTH
08	2'589'12.57	6020289.00
09	2'57955.40	6019818.89
10	2'56366.75	6023187.99
11	2'57056.34	6022193.34
12	2'56256.20	6024197.57
13	2'56977.43	6023193.20
14	2'56630.05	6023133.87
15	2'57243.59	6024077.57
16	2'57520.87	6023095.39
17	2'57577.89	6024244.59
18	2'56699.74	6024194.29
19	2'58695.13	6023563.70
20	2'58700.45	6024529.95

**PRELIMINARY ISSUE**  
THIS PLAN ISSUED FOR  
ADVANCE INFORMATION ONLY



**US Army Corps of Engineers**  
San Francisco District  
1455 Market Street  
San Francisco, CA 94103

Mark	Description	Date	Appr.

DESIGNED BY	CHECKED BY	DRAWN BY
DATE	SHEET NO.	DRAWING NO.
7/17/2008	1 OF 4	9 2 358
PREPARED UNDER THE DIRECTION OF		
LAURENCE M. FARRELL		
LT. COLONEL, C.E., DISTRICT ENGINEER		

ALAMEDA COUNTY  
CALIFORNIA  
RICHMOND INNER HARBOR  
CONDITION SURVEY  
15-16 JULY 2008

Sheet reference number  
**C4**