

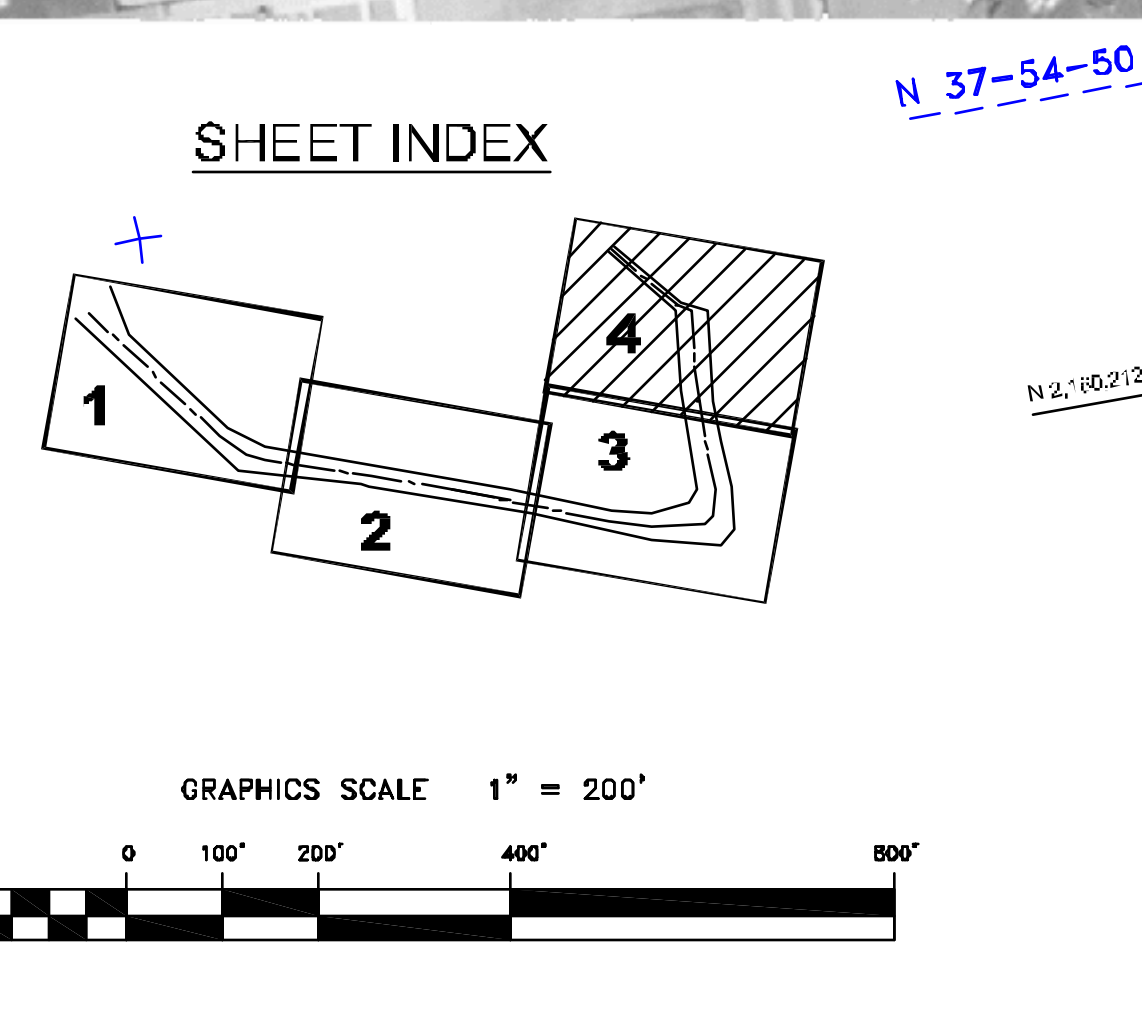
N.A.D. 1983 FEET COORDINATES

CHANNEL /	NORTH	EAST
21	2161818.66	6028718.06
22	2161806.18	6024470.68
23	2161929.13	6023699.08
24	2162011.81	6023671.48
25	2162216.51	6022130.20
26	2163871.87	6022258.12

N.A.D 1983 FEET COORDINATES

CHANNEL /	EAST	NORTH
02	2' 589' 72.57	6023299.00
09	2' 575' 58.10	602' 98' 38
10	2' 583' 66.75	6023' 87.69
11	2' 579' 58.34	6022' 79.34
12	2' 582' 56.20	6024' 79.57
13	2' 589' 71.83	6024' 79.20
14	2' 586' 30.66	6025' 33.87
15	2' 572' 43.89	6024' 67.87
16	2' 576' 20.89	6023' 36.39
17	2' 575' 77.89	6024244.89
18	2' 586' 99.74	6024' 79.20
19	2' 588' 99.43	6023' 86.76
20	2' 587' 00.15	6024' 62.95

PRELIMINARY ISSUE
THIS PLAN ISSUED FOR
ADVANCE INFORMATION ONLY



Mark	Description	Date	Appr.

DESIGNED BY:	DATE:	CHECKED BY:	DATE:
PDT	11/4/2001	PDT	1 OF 4
DRAWING NO.:	9	DRAWING NO.:	2
			XXX

PREPARED UNDER THE DIRECTION OF
TORREY A. DICIRO
LT. COLONEL, C.E., DISTRICT ENGINEER

SUBMITTED:	PDT
Major Survey Team Leader	
APPROVAL RECOMMENDED:	
CHW, Geomatics Section	
APPROVED:	
CHW, Construction Branch	

CALIFORNIA
ALAMEDA COUNTY
RICHMOND INNER HARBOR
PREDECESS SURVEY
08 SEPTEMBER, 17, 21-25, OCTOBER
and 01 NOVEMBER 2011

Sheet reference number
C4