

PRELIMINARY ISSUE
THIS PLAN ISSUED FOR
ADVANCE INFORMATION ONLY


**US Army Corps
of Engineers**
San Francisco District
1455 Market Street
San Francisco, CA 94103

Mark	Description	Date	Appr.

DESIGNED BY: DATE: 08/14/2009	CHECKED BY: TVW SHEET NO. 4 OF 4	DRAWING NO. 9 2 DRAWING NO. 9 2	DRAWN BY: EMC
PREPARED UNDER THE DIRECTION OF LAURENCE M. FARRELL LT. COLONEL, C.E., DISTRICT ENGINEER			

CALIFORNIA
ALAMEDA COUNTY
RICHMOND INNER HARBOR
SANTA FE CHANNEL
CONDITION SURVEY
11 SEPTEMBER 2009

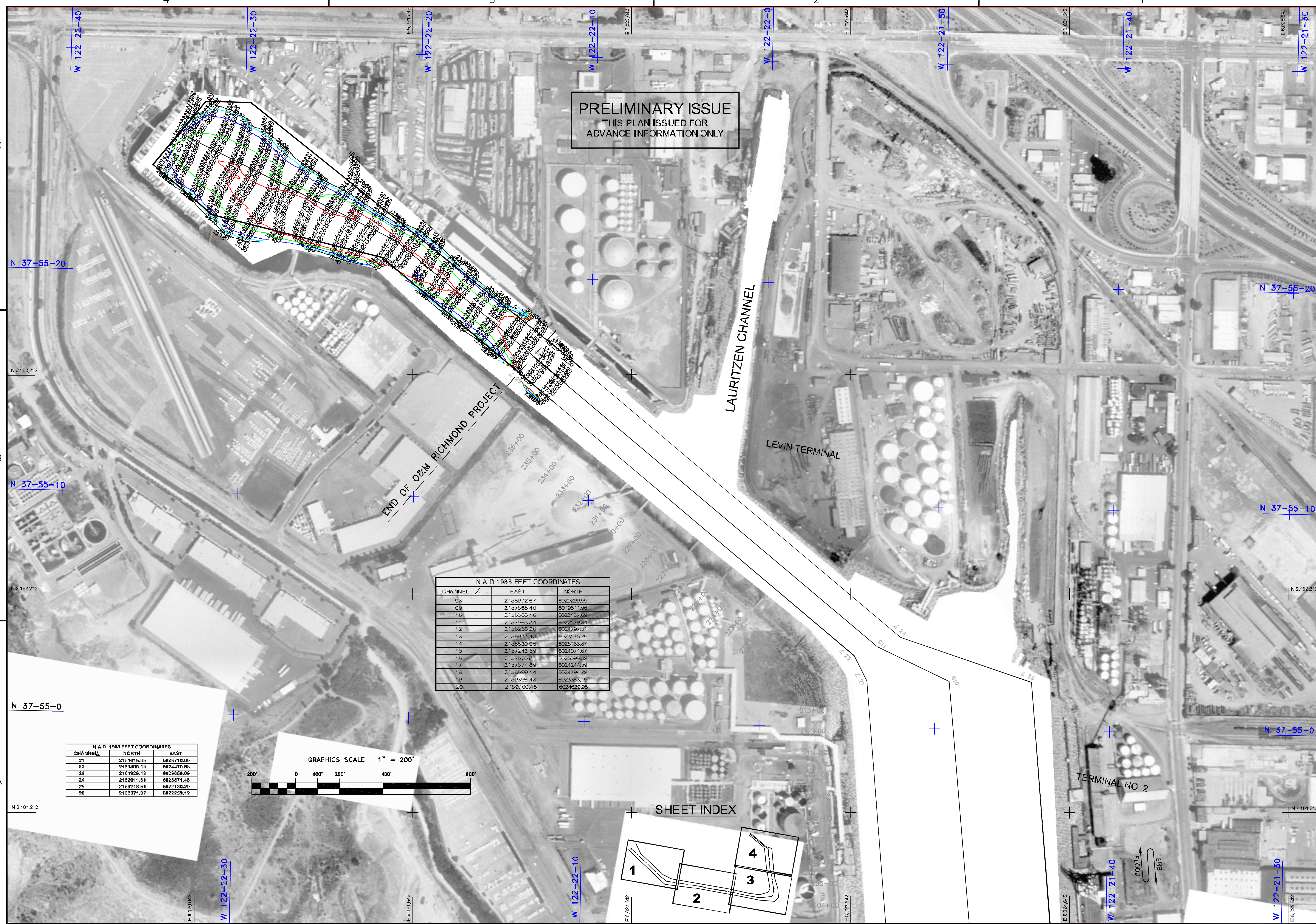
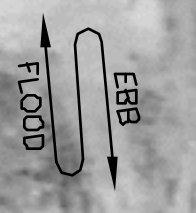
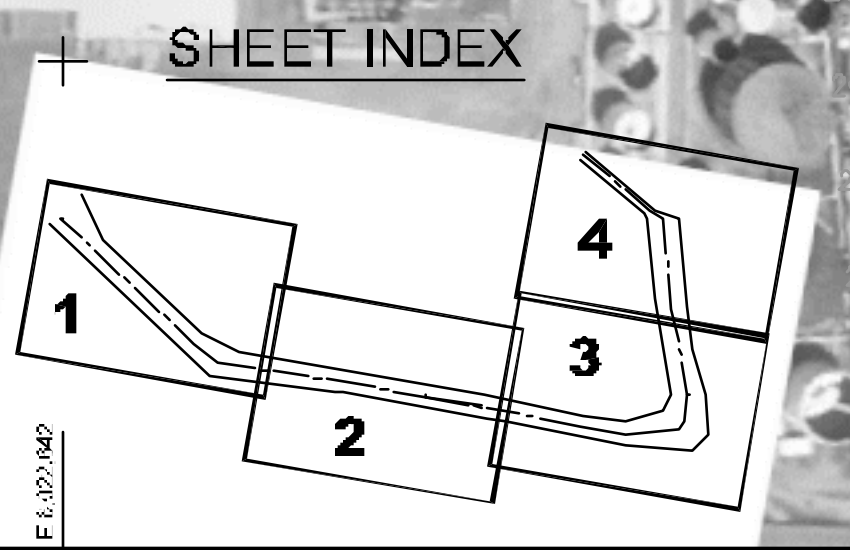
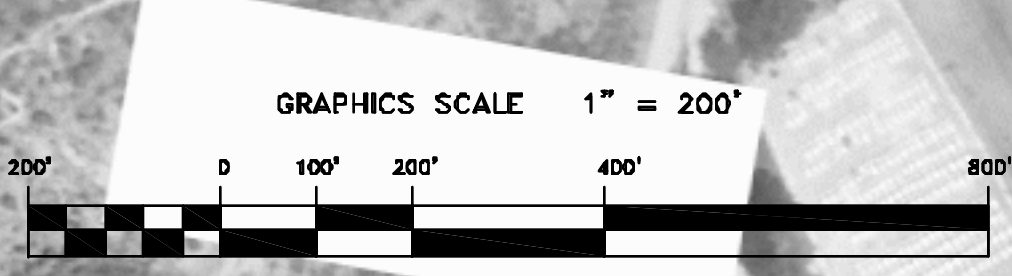
Sheet
reference
number
C4

N.A.D 1983 FEET COORDINATES

CHANNEL	EAST	NORTH
01	2159972.57	6020299.00
02	2157556.10	6019811.96
03	2159356.75	6020317.69
04	2157053.24	6022198.24
05	2156295.20	6024197.57
06	2159977.83	6023175.20
07	2159530.55	6025133.87
08	2157243.59	6026157.67
09	2151923.71	6028249.90
10	2153777.39	6024241.59
11	2159599.74	6024194.29
12	2159395.43	6023951.10
13	2159700.46	6024529.95

N.A.D. 1983 FEET COORDINATES

CHANNEL	NORTH	EAST
21	2161818.86	6028718.06
22	2161805.19	6024470.68
23	2161929.13	6023659.09
24	2162811.64	6023871.48
25	2163218.51	6022130.20
26	2163371.87	6022259.12



4
3
2
1
C
B
A