

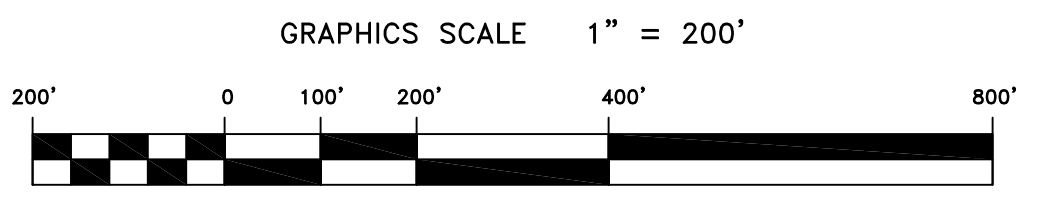
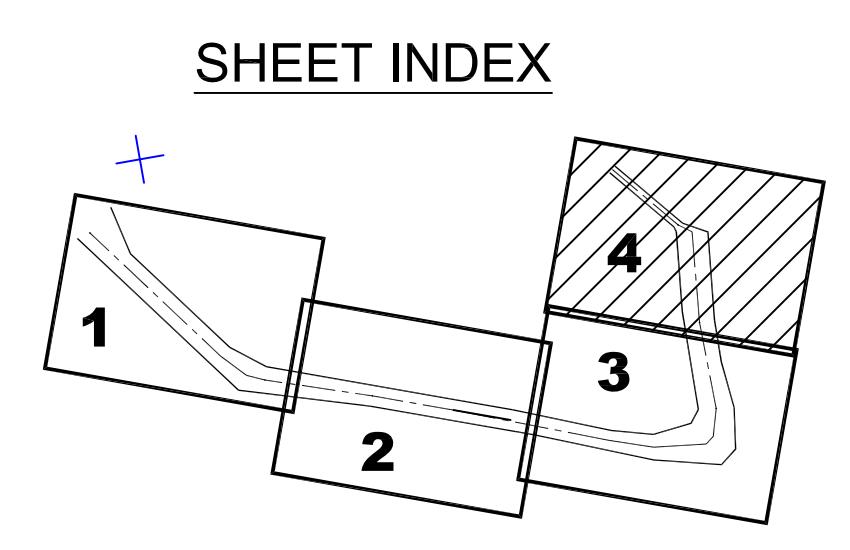
CHANNEL	NORTH	EAST
21	2161813.86	6023718.06
22	2161808.13	6024470.68
23	2161928.13	6023659.09
24	2162011.61	6023871.48
25	2163218.51	6022130.20
26	2163371.37	6022259.12

CHANNEL	EAST	NORTH
08	2156972.87	6020299.00
09	2157565.40	6019811.96
10	2156366.18	6023187.69
11	2157068.34	6022179.34
12	2156256.20	6024797.51
13	2156977.43	6023175.20
14	2156630.06	6025133.87
15	2157243.59	6024071.67
16	2157620.81	6025096.39
17	2157571.89	6024244.59
18	2158699.14	6024794.29
19	2159896.43	6023863.10
20	2159700.46	6024629.96

LEGEND:

—	-38'
—	-37'
—	-36'
—	-35'
—	-34'

PRELIMINARY ISSUE
THIS PLAN ISSUED FOR
ADVANCE INFORMATION ONLY



US Army Corps of Engineers
San Francisco District
1455 Market Street
San Francisco, CA 94103

Mark	Description	Date	Appr.

DESIGNED BY: DATE: 1/29/2013	CHECKED BY:	PDT	PDT	PDT	PDT
	SHEET NO.	DRAWING NO.	DRAWING NO.	DRAWING NO.	DRAWING NO.
	1 OF 4	9	2	2	XXX

PREPARED UNDER THE DIRECTION OF
JOHN K. BAKER
LT. COLONEL, C.E., DISTRICT ENGINEER

SUBMITTED: **PDT**
Metro Survey Team Leader

APPROVAL RECOMMENDED:
CHIEF, Geomatics Section

APPROVED:
CHIEF, Construction Branch

CALIFORNIA
RICHMOND INNER HARBOR
CONDITION SURVEY
4 JANUARY 2013

ALAMEDA COUNTY

Sheet reference number
C4