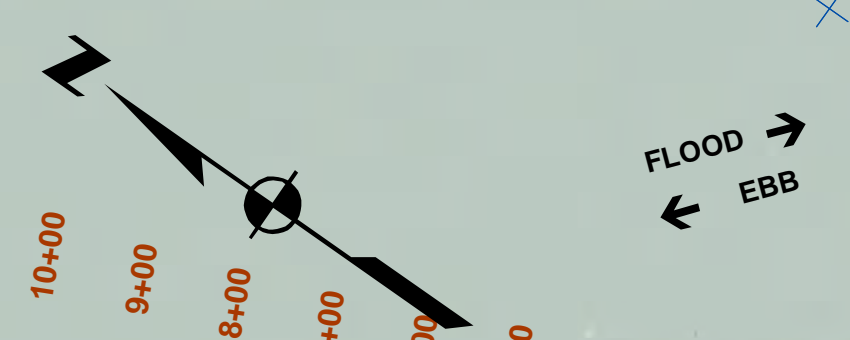
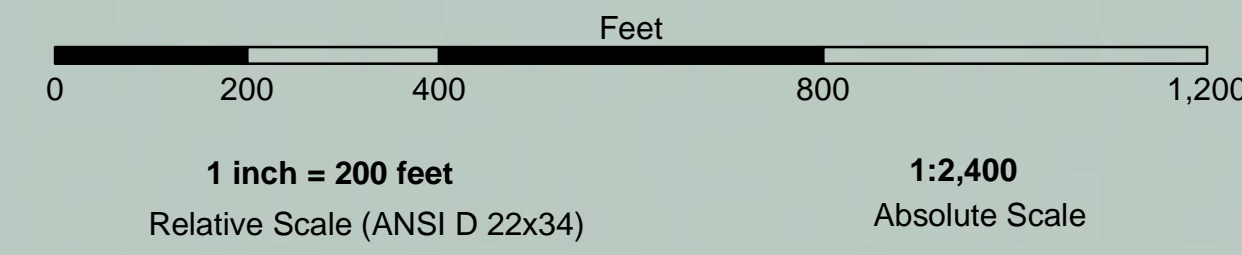


PRELIMINARY ISSUE
THIS PLAN ISSUED FOR
ADVANCE INFORMATION ONLY



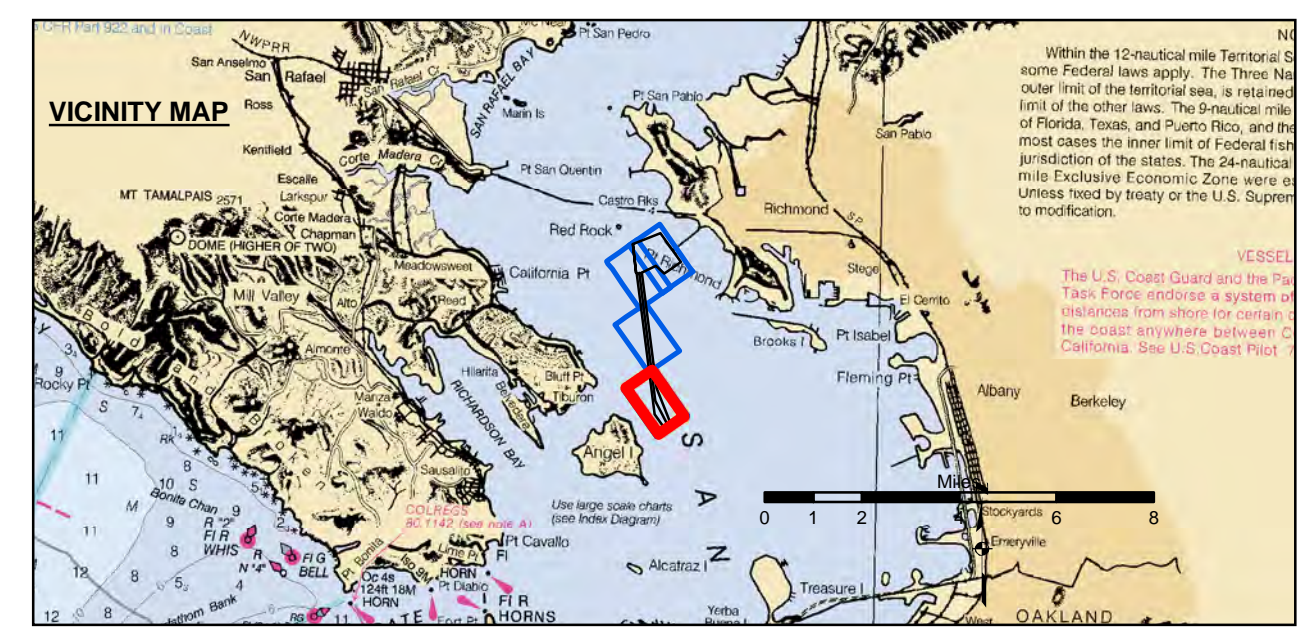
US Army Corps of Engineers
San Francisco District
450 Golden Gate Avenue
San Francisco, CA 94102

DISCLAIMER
The United States Government furnishes these data for informational purposes only. It is not intended for navigation. The user is responsible for the results of any application of the data for other than its intended purpose. The user is responsible for the results of any application of the data for other than its intended purpose. The user is responsible for the results of any application of the data for other than its intended purpose.

Chart Date:	May 08, 2024
Designed by:	PDT
Plotted By:	PDT
Checked By:	PDT
Drawn by:	PDT

CALIFORNIA
CONTRA COSTA COUNTY
RICHMOND OUTER HARBOR
SOUTHAMPTON SHOAL
CONDITION SURVEY
30 APRIL 2024

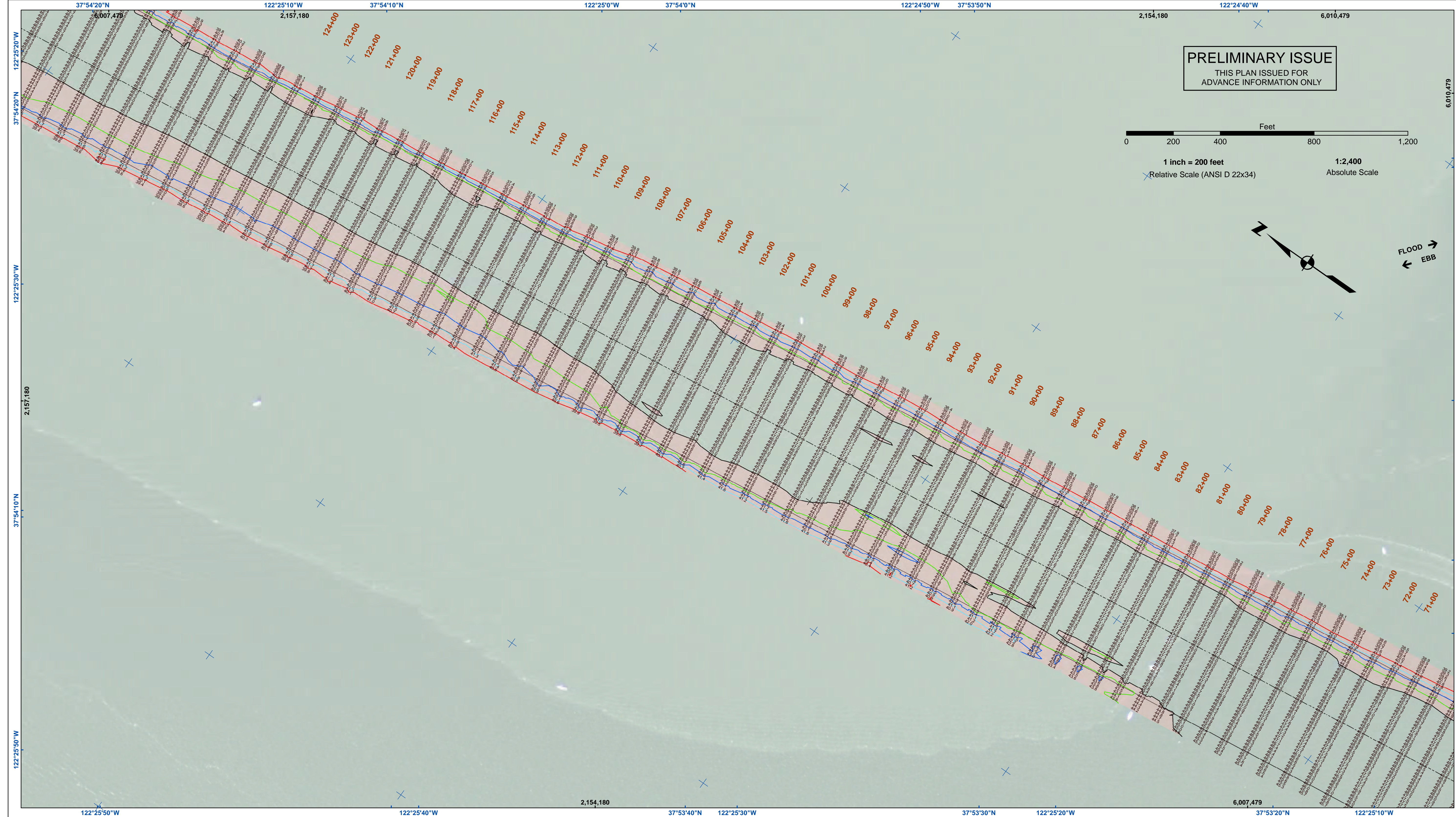
Sheet
Reference
Number
1 of 4



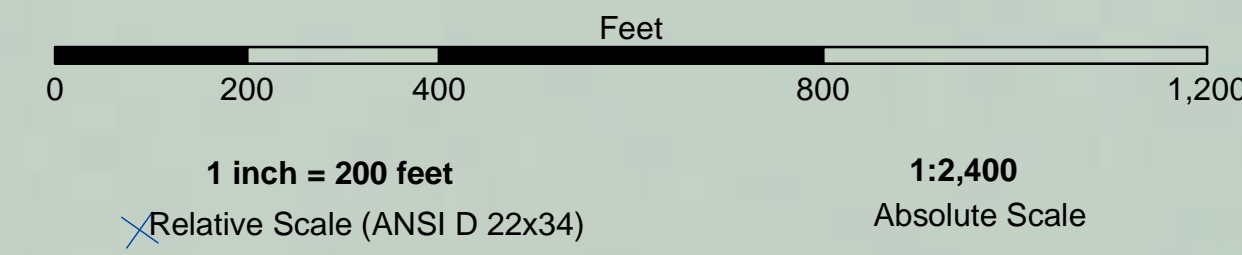
Federal Navigation Channel	Beacon, General	Contours
Shoaling Area	Obstruction Point	
Placement Area	Navigation Buoy	
Anchorage Area	Navigation Buoy	
Wreck Area	Shoalest Sounding*	
Submerged Wreck		-45
Angle Point		-44
		-43
		-42
		-41

NOTES:
HORIZONTAL COORDINATE SYSTEM:
NORTH AMERICAN DATUM OF 1983 (NAD83), PROJECTED TO THE STATE PLANE COORDINATE SYSTEM (SPCS), CALIFORNIA ZONE III. DISTANCE UNITS IN U.S. SURVEY FEET.
VERTICAL DATUM:
SOUNDINGS ARE SHOWN IN FEET AND INDICATE DEPTHS BELOW MEAN LOWER LOW WATER.
THE INFORMATION DEPICTED ON THIS MAP REPRESENTS THE RESULTS OF A SURVEY CONDUCTED ON THE DATE INDICATED AND CAN ONLY BE CONSIDERED TO REPRESENT THE GENERAL CONDITION EXISTING AT THAT TIME.
*SHOALEST SOUNDING PER QUARTER PER REACH DRAWING NOT TO BE USED FOR NAVIGATION.
ONLY CHANNEL CONDITION AT DATE OF SURVEY.
THE LOCATION OF ALL NAVIGATION AIDS ARE BASED ON INFORMATION PROVIDED BY THE U.S. COAST GUARD. BUOY LOCATION REPRESENT THE POSITION OF THE SINKER ONLY.
SURVEYED BY THE CORPS OF ENGINEERS.

SOUNDING FOR THE CHANNEL MEASURED WITH MULTIBEAM ECHOSOUNDER AND ARE SHOWN TO THE NEAREST TENTH FOOT.
SOUNDINGS ARE BASED ON THE DATUM OF MEAN LOWER LOW WATER AT THE LOCALITY.
BASE MAPS ARE USDA NAIP 2010.
THE PROJECT DEPTHS ARE AS FOLLOWS:
SOUTHAMPTON SHOALS CHANNEL -45 FEET.
LONG WHARF MANEUVERING AREA -45 FEET.
1:00 INDICATED THE NUMBER AND BEGINNING OF A LINE OF SOUNDINGS.
HORIZONTAL CONTROL:
SOUTHAMPTON SHOALS & LONG WHARF MANEUVERING) BENCHMARK "10" 1937 ELEV 15.86 FT. MLLW.
AND BENCHMARK "11" 1946 ELEV 15.47 FT. MLLW.
TIDE GAUGE LOCATED AT TIBURON NET DEPOT.



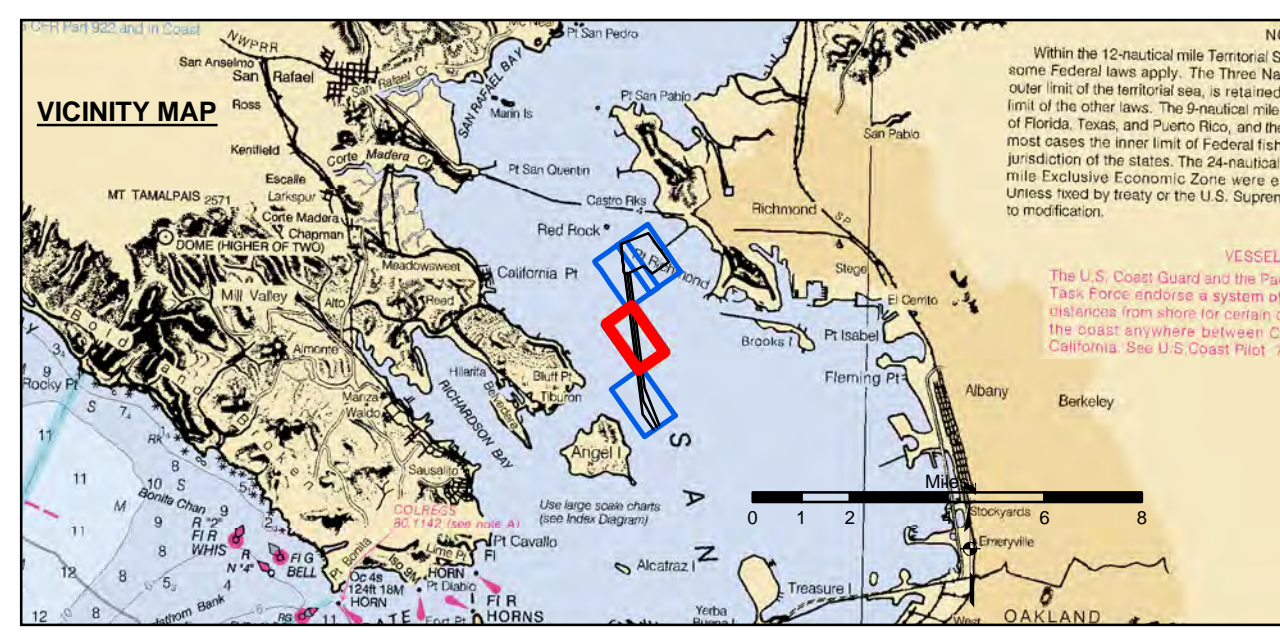
PRELIMINARY ISSUE
THIS PLAN ISSUED FOR
ADVANCE INFORMATION ONLY



US Army Corps of Engineers
San Francisco District
450 Golden Gate Avenue
San Francisco, CA 94102

DISCLAIMER
The United States Government furnishes these data for informational purposes only. The data represents the results of data collected by the United States Government and is not intended for navigation. The user is responsible for the results of any use of this data for other than its intended purpose. The United States Government makes no warranty, expressed or implied, concerning the accuracy, completeness, or reliability of the data. The user is responsible for the results of any use of this data for other than its intended purpose. The United States Government makes no warranty, expressed or implied, concerning the accuracy, completeness, or reliability of the data. The user is responsible for the results of any use of this data for other than its intended purpose.

Chart Date:	May 08, 2024
Designed by:	PDT
Plotted by:	PDT
Checked by:	PDT
Drawn by:	PDT

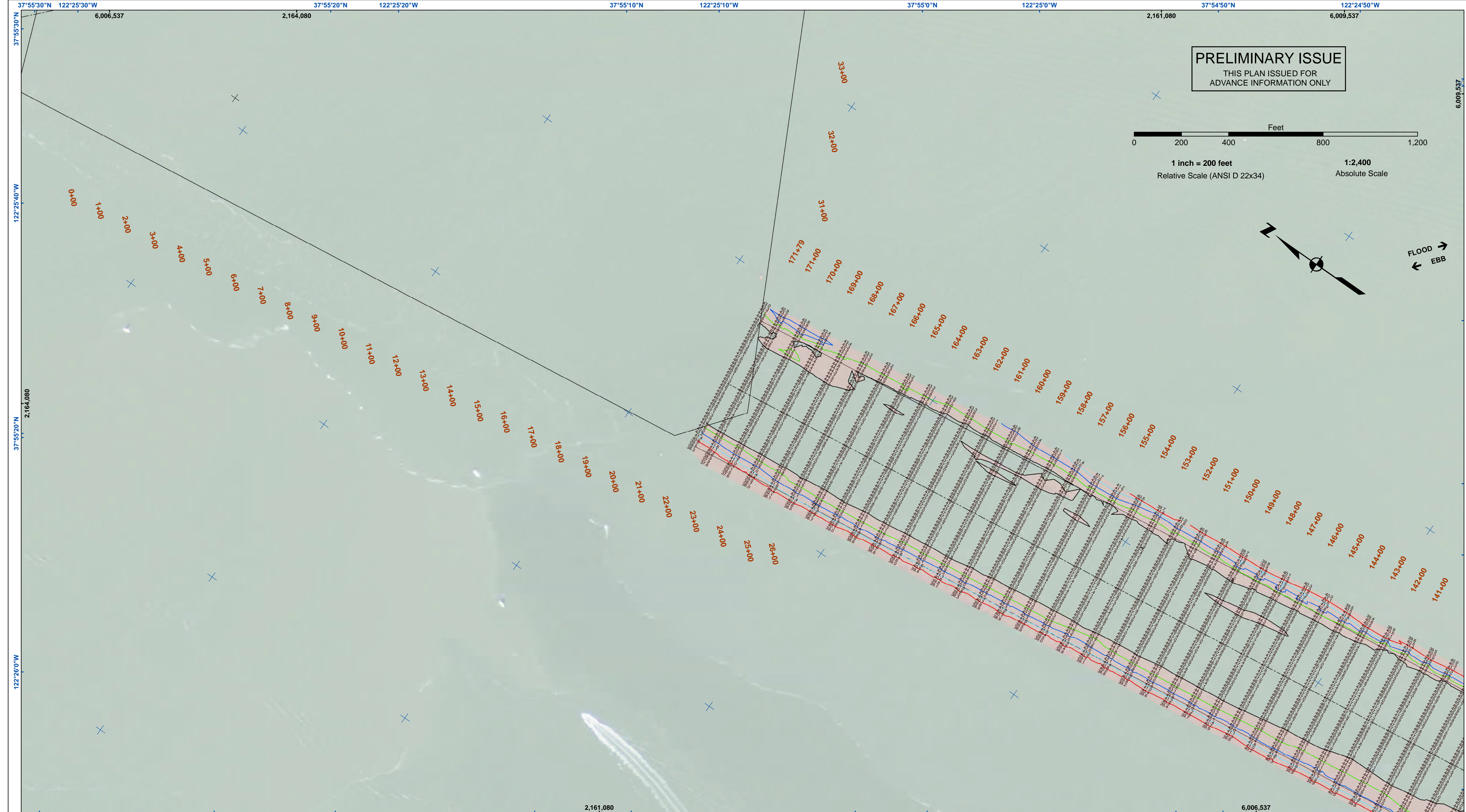


Federal Navigation Channel	Beacon, General	Contours
Shoaling Area	Obstruction Point	-45
Placement Area	Navigation Buoy	-44
Anchorage Area	Navigation Buoy	-43
Wreck Area	Shoalest Sounding*	-42
Submerged Wreck		-41
Angle Point		

NOTES:
HORIZONTAL COORDINATE SYSTEM:
NORTH AMERICAN DATUM OF 1983 (NAD83), PROJECTED TO THE STATE PLANE COORDINATE SYSTEM (SPCS), CALIFORNIA ZONE III. DISTANCE UNITS IN U.S. SURVEY FEET.
VERTICAL DATUM:
SOUNDINGS ARE SHOWN IN FEET AND INDICATE DEPTHS BELOW MEAN LOWER LOW WATER.
BASE MAPS ARE USDA NAIP 2010.
THE PROJECT DEPTHS ARE AS FOLLOWS:
SOUTHAMPTON SHOALS CHANNEL -45 FEET.
LONG WHARF MANEUVERING AREA -45 FEET.
1:00 INDICATED THE NUMBER AND BEGINNING OF A LINE OF SOUNDINGS.
HORIZONTAL CONTROL:
SOUTHAMPTON SHOALS & LONG WHARF MANEUVERING) BENCHMARK "11" 1937 ELEV 15.86 FT. MLLW.
AND BENCHMARK "11" 1946 ELEV 15.47 FT. MLLW.
TIDE GAUGE LOCATED AT TIBURON NET DEPOT.
THE INFORMATION DEPICTED ON THIS MAP REPRESENTS THE RESULTS OF A SURVEY CONDUCTED ON THE DATE INDICATED AND CAN ONLY BE CONSIDERED TO REPRESENT THE GENERAL CONDITION EXISTING AT THAT TIME.
*SHOALEST SOUNDING PER QUARTER PER REACH DRAWING NOT TO BE USED FOR NAVIGATION.
ONLY CHANNEL CONDITION AT DATE OF SURVEY.
THE LOCATION OF ALL NAVIGATION AIDS ARE BASED ON INFORMATION PROVIDED BY THE U.S. COAST GUARD. BUOY LOCATION REPRESENT THE POSITION OF THE SINKER ONLY.
SURVEYED BY THE CORPS OF ENGINEERS.

CALIFORNIA
CONTRA COSTA COUNTY
RICHMOND OUTER HARBOR
SOUTHAMPTON SHOALS
CONDITION SURVEY
30 APRIL 2024

Sheet Number
2 of 4



US Army Corps of Engineers
 San Francisco District
 450 Golden Gate Avenue
 San Francisco, CA 94102

PRELIMINARY ISSUE
 THIS PLAN ISSUED FOR
 ADVANCE INFORMATION ONLY

0 200 400 800 1,200
 Feet
 1 inch = 200 feet
 Relative Scale (ANSI D 22x34) 1:2,400
 Absolute Scale

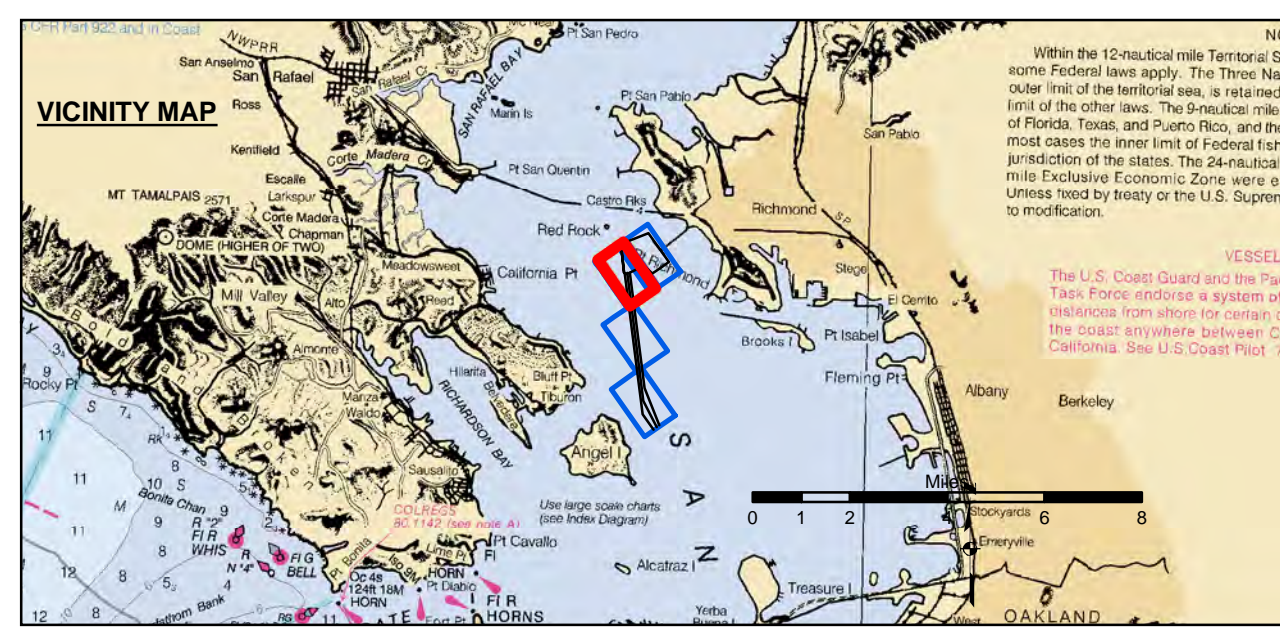
FLOOD
 ← EBB

DISCLAIMER
 The United States Government furnishes these data for informational purposes only. It is not intended to be used for navigation. The user is responsible for the results of any application of the data for other than its intended purpose. The United States Government makes no warranty, expressed or implied, concerning the accuracy, completeness, or reliability of the data. The user is responsible for the results of any application of the data for other than its intended purpose. These data belong to the Government. Therefore, the user is not to disseminate these data to others without also transferring this disclaimer.

Prepared Under the Direction of TIMOTHY W. SHEBESTA LT COLONEL, C.E. DISTRICT ENGINEER	Chart Date: May 08, 2024
Submitted: Hydro Survey Team Leader	Designed by: PDT
Recommended: Chief, Hydro Survey Section	Drawn by: PDT
Approved: Chief, Construction Branch	

CONTRA COSTA COUNTY
 CALIFORNIA
RICHMOND OUTER HARBOR
SOUTHAMPTON SHOALS
CONDITION SURVEY
 30 APRIL 2024

Sheet
Reference
Number
3 of 4



Federal Navigation Channel	Beacon, General	Contours
Shoaling Area	Obstruction Point	
Placement Area	Navigation Buoy	
Anchorage Area	Navigation Buoy	
Wreck Area	Shoalest Sounding*	
Submerged Wreck		-45
Angle Point		-44
		-43
		-42
		-41

NOTES:
 HORIZONTAL COORDINATE SYSTEM:
 NORTH AMERICAN DATUM OF 1983 (NAD83), PROJECTED TO THE STATE PLANE COORDINATE SYSTEM (SPCS), CALIFORNIA ZONE III. DISTANCE UNITS IN U.S. SURVEY FEET.

VERTICAL DATUM:
 SOUNDINGS ARE SHOWN IN FEET AND INDICATE DEPTHS BELOW MEAN LOWER LOW WATER.

BASE MAPS ARE USDA NAIP 2010.

THE PROJECT DEPTHS ARE AS FOLLOWS:
 SOUTHAMPTON SHOALS CHANNEL -45 FEET.
 LONG WHARF MANEUVERING AREA -45 FEET.

1:00 INDICATED THE NUMBER AND BEGINNING OF A LINE OF SOUNDINGS.

HORIZONTAL CONTROL:
 (SOUTHAMPTON SHOALS & LONG WHARF MANEUVERING) BENCHMARK "10" 1937 ELEV 15.86 FT. MLLW.
 AND BENCHMARK "11" 1946 ELEV 15.47 FT. MLLW.
 TIDE GAUGE LOCATED AT TIBURON NET DEPOT.

*SHOALEST SOUNDING PER QUARTER PER REACH
 DRAWING NOT TO BE USED FOR NAVIGATION.
 ONLY CHANNEL CONDITION AT DATE OF SURVEY.
 THE LOCATION OF ALL NAVIGATION AIDS ARE BASED ON
 INFORMATION PROVIDED BY THE U.S. COAST GUARD. BUOY LOCATION REPRESENT
 THE POSITION OF THE SINKER ONLY.

SURVEYED BY THE CORPS OF ENGINEERS.