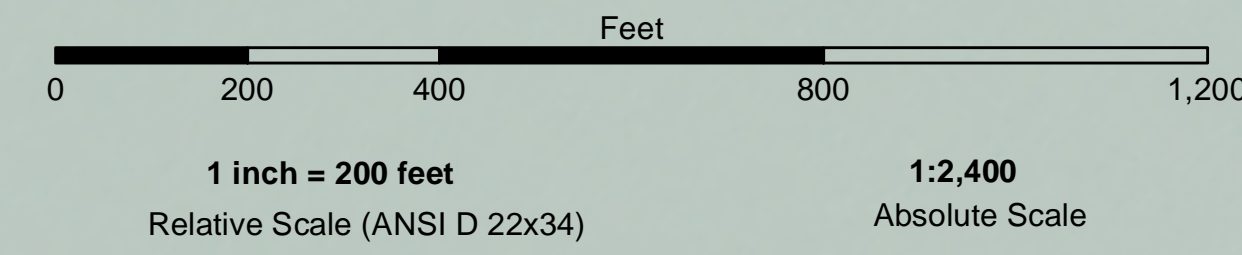


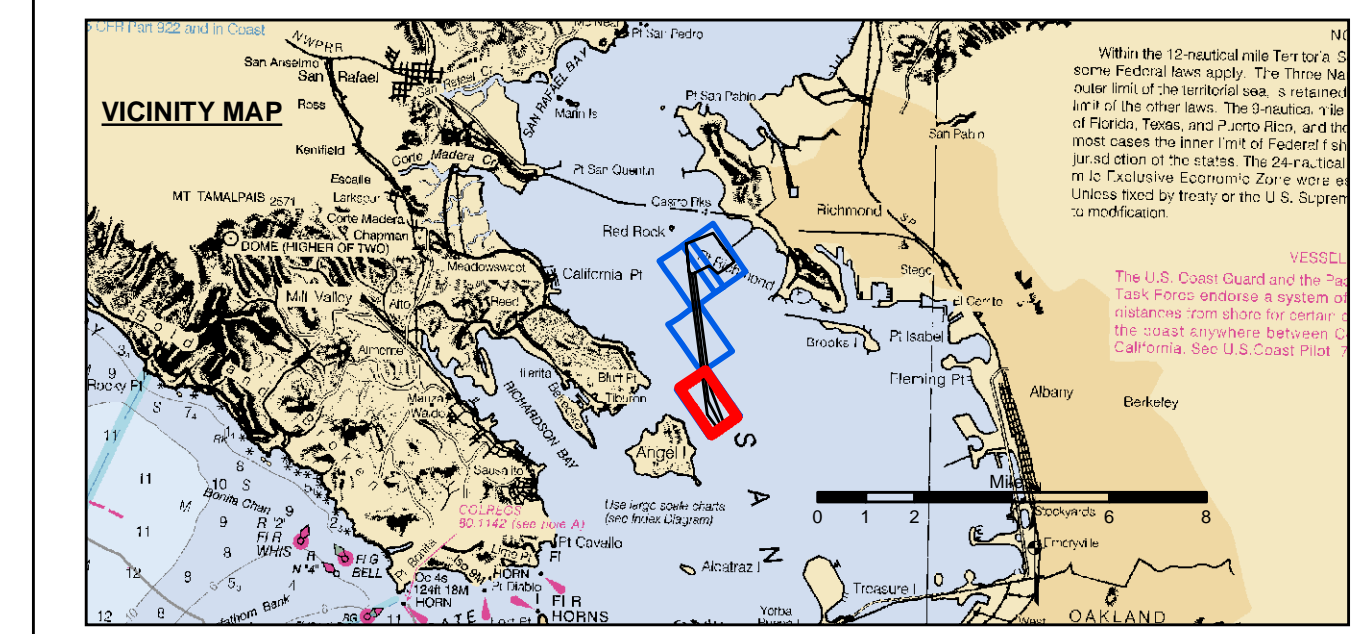
PRELIMINARY ISSUE
THIS PLAN ISSUED FOR
ADVANCE INFORMATION ONLY



US Army Corps of Engineers
San Francisco District
450 Golden Gate Ave
San Francisco, CA 94102

DISCLAIMER
The United States Government furnishes this information as a service to the public and does not warrant, express or implied, the accuracy, completeness, or reliability of the information. The user is responsible for the results of any use of the information. The user is responsible for the results of any use of the information. The user is responsible for the results of any use of the information. The user is responsible for the results of any use of the information.

Chart Date:	Oct 27, 2022
Designed by:	PDT
Plotted by:	PDT
Checked by:	PDT
Drawn by:	PDT



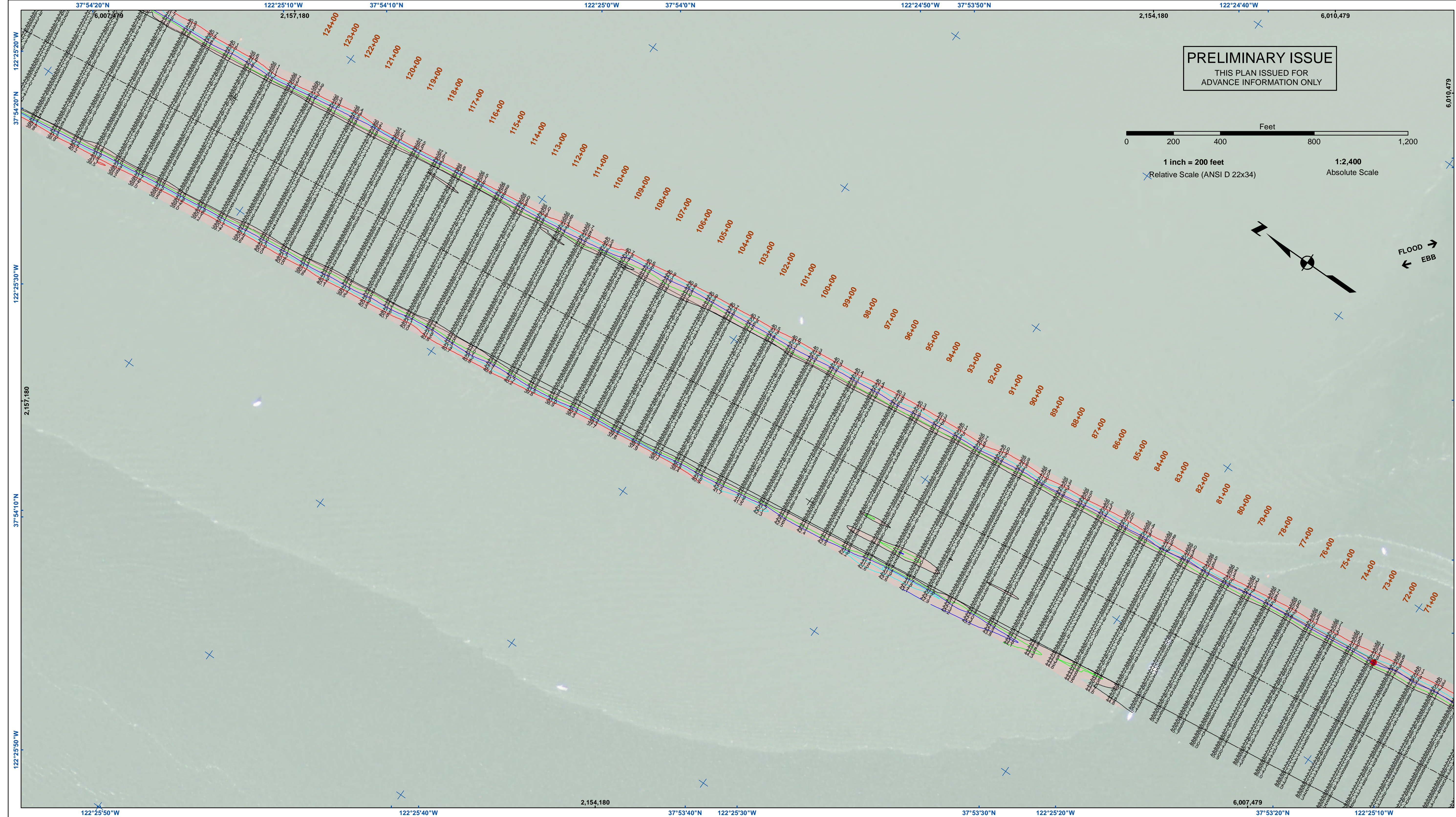
	Federal Navigation Channel		Beacon, General		Contours
	Shoaling Area		Obstruction Point		-45
	Placement Area		Navigation Buoy		-44
	Anchorage Area		Navigation Buoy		-43
	Wreck Area		Shoalest Sounding*		-42
	Submerged Wreck				-41
	Angle Point				

NOTES:
HORIZONTAL COORDINATE SYSTEM:
NORTH AMERICAN DATUM OF 1983 (NAD83), PROJECTED TO THE STATE PLANE COORDINATE SYSTEM (SPCS), CALIFORNIA ZONE III. DISTANCE UNITS IN U.S. SURVEY FEET.
VERTICAL DATUM:
SOUNDINGS ARE SHOWN IN FEET AND INDICATE DEPTHS BELOW MEAN LOWER LOW WATER.
THE INFORMATION DEPICTED ON THIS MAP REPRESENTS THE RESULTS OF A SURVEY CONDUCTED ON THE DATE INDICATED AND CAN ONLY BE CONSIDERED TO REPRESENT THE GENERAL CONDITION EXISTING AT THAT TIME.
*SHOALEST SOUNDING PER QUARTER PER REACH DRAWING NOT TO BE USED FOR NAVIGATION.
ONLY CHANNEL CONDITION AT DATE OF SURVEY.
THE LOCATION OF ALL NAVIGATION AIDS ARE BASED ON INFORMATION PROVIDED BY THE U.S. COAST GUARD. BUOY LOCATION REPRESENT THE POSITION OF THE SINKER ONLY.
SURVEYED BY THE CORPS OF ENGINEERS.

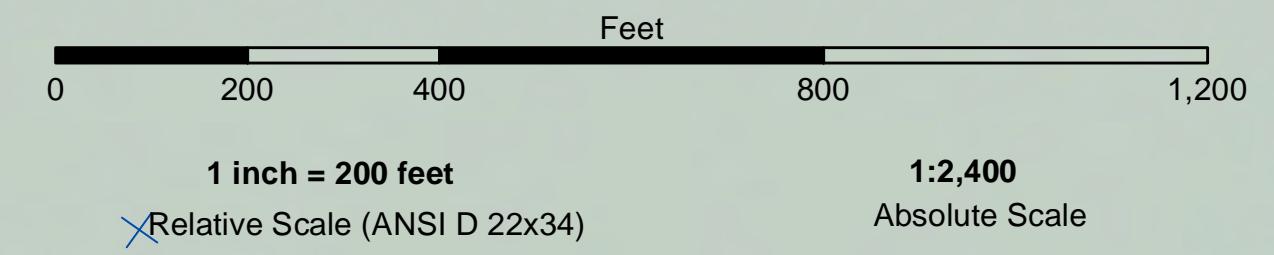
SOUNDINGS WERE TAKEN BY FATHOMETER AND ARE SHOWN TO THE NEAREST TENTH OF A FOOT.
SOUNDINGS ARE BASED ON THE DATUM OF MEAN LOWER LOW WATER AT THE LOCALITY.
BASE MAPS ARE USDA NAIP 2010.
THE PROJECT DEPTHS ARE AS FOLLOWS:
SOUTHAMPTON SHOALS CHANNEL -45 FEET.
LONG WHARF MANEUVERING AREA -45 FEET.
1:00 INDICATED THE NUMBER AND BEGINNING OF A LINE OF SOUNDINGS.
HORIZONTAL CONTROL:
HORIZONTAL POSITIONING: COAST GUARD DGPS
VERTICAL TIDES: INTERPOLATED FROM NOAA ONLINE TIDE STATIONS:
941 4863 - RICHMOND, CA
941 4290 - SAN FRANCISCO, CA
VERTICAL CONTROL:
(SOUTHAMPTON SHOALS & LONG WHARF MANEUVERING) BENCHMARK "10" 1937 ELEV 15.86 FT. MLLW.
AND BENCHMARK "11" 1946 ELEV 15.47 FT. MLLW.
TIDE GAUGE LOCATED AT TIBURON NET DEPOT.

CALIFORNIA
ALAMEDA COUNTY
RICHMOND OUTER HARBOR
CONDITION SURVEY
25 OCTOBER 2022

Sheet
Reference
Number
1 of 4



PRELIMINARY ISSUE
THIS PLAN ISSUED FOR
ADVANCE INFORMATION ONLY

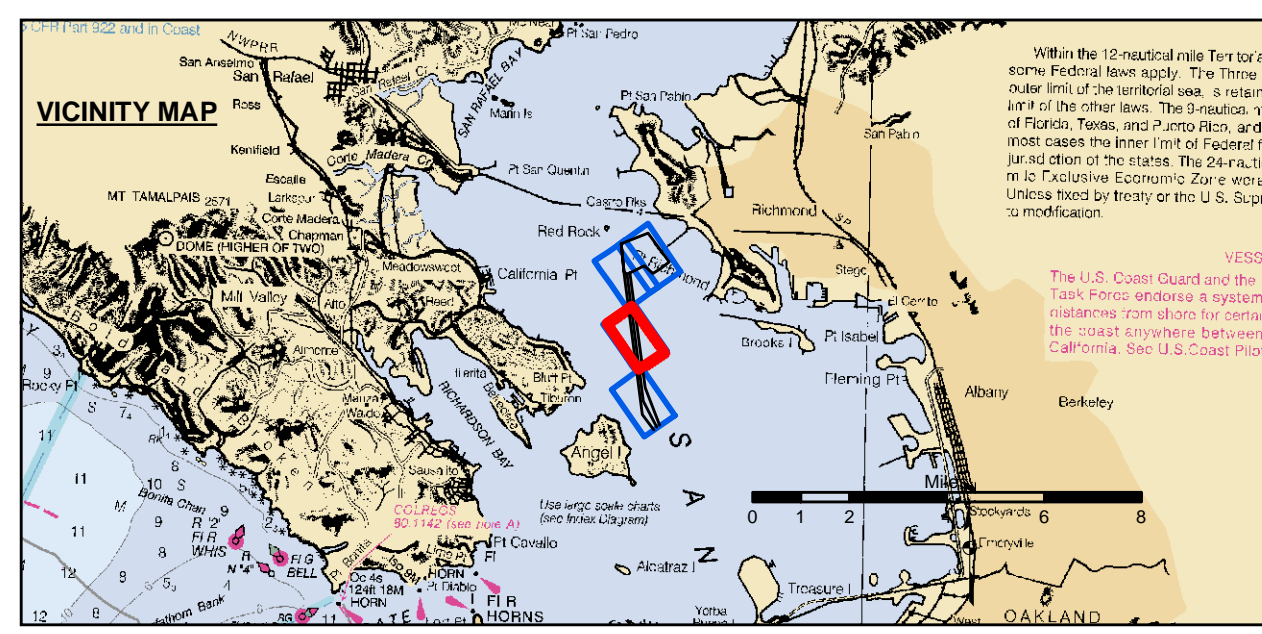


FLOOD
← EBB

US Army Corps of Engineers
San Francisco District
450 Golden Gate Ave
San Francisco, CA 94102

DISCLAIMER
The United States Government furnishes this information as a service to the public. It is not intended to be used for any purpose other than that for which it was prepared. The United States Government makes no warranty, expressed or implied, concerning the accuracy, completeness, or timeliness of the information. The user is responsible for the results of any use of the information. The user is responsible for the results of any use of the information. The user is responsible for the results of any use of the information. The user is responsible for the results of any use of the information.

Chart Date:	Oct 27, 2022
Designed by:	PDT
Plotted by:	PDT
Checked by:	PDT
Drawn by:	PDT



Federal Navigation Channel	Beacon, General	Contours
Shoaling Area	Obstruction Point	-45
Placement Area	Navigation Buoy	-44
Anchorage Area	Navigation Buoy	-43
Wreck Area	Shoalest Sounding*	-42
Submerged Wreck		-41
Angle Point		

NOTES:
HORIZONTAL COORDINATE SYSTEM:
NORTH AMERICAN DATUM OF 1983 (NAD83), PROJECTED TO THE STATE PLANE COORDINATE SYSTEM (SPCS), CALIFORNIA ZONE III. DISTANCE UNITS IN U.S. SURVEY FEET.
VERTICAL DATUM:
SOUNDINGS ARE SHOWN IN FEET AND INDICATE DEPTHS BELOW MEAN LOWER LOW WATER.
THE INFORMATION DEPICTED ON THIS MAP REPRESENTS THE RESULTS OF A SURVEY CONDUCTED ON THE DATE INDICATED AND CAN ONLY BE CONSIDERED TO REPRESENT THE GENERAL CONDITION EXISTING AT THAT TIME.
*SHOALEST SOUNDING PER QUARTER PER REACH
DRAWING NOT TO BE USED FOR NAVIGATION.
ONLY CHANNEL CONDITION AT DATE OF SURVEY.
THE LOCATION OF ALL NAVIGATION AIDS ARE BASED ON INFORMATION PROVIDED BY THE U.S. COAST GUARD. BUOY LOCATION REPRESENT THE POSITION OF THE SINKER ONLY.
SURVEYED BY THE CORPS OF ENGINEERS.

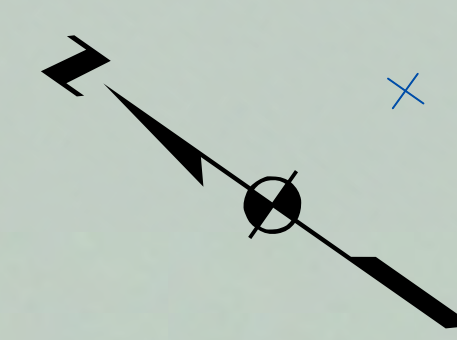
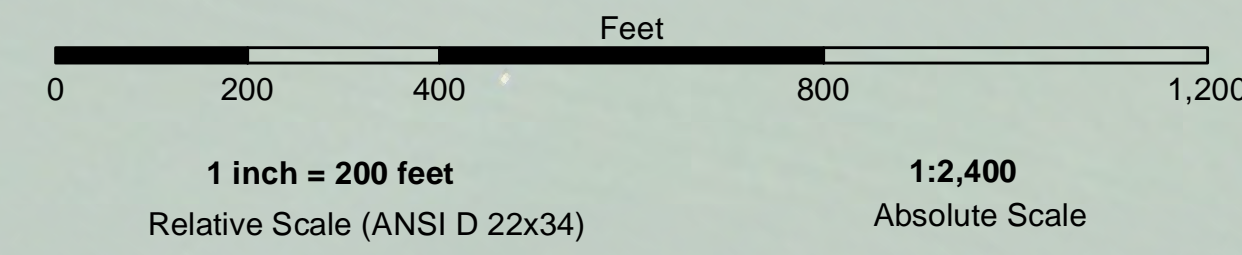
SOUNDINGS WERE TAKEN BY FATHOMETER AND ARE SHOWN TO THE NEAREST TENTH OF A FOOT.
SOUNDINGS ARE BASED ON THE DATUM OF MEAN LOWER LOW WATER AT THE LOCALITY.
BASE MAPS ARE USDA NAIP 2010.
THE PROJECT DEPTHS ARE AS FOLLOWS:
SOUTHAMPTON SHOALS CHANNEL -45 FEET.
LONG WHARF MANEUVERING AREA -45 FEET.
1:00 INDICATED THE NUMBER AND BEGINNING OF A LINE OF SOUNDINGS.
HORIZONTAL CONTROL:
HORIZONTAL POSITIONING: COAST GUARD DGPS
VERTICAL CONTROL:
VERTICAL DATUM: INTERPOLATED FROM NOAA ONLINE TIDE STATIONS:
941 4290 - RICHMOND, CA
941 4290 - SAN FRANCISCO, CA
VERTICAL CONTROL:
(SOUTHAMPTON SHOALS & LONG WHARF MANEUVERING) BENCHMARK "10" 1937 ELEV 15.86 FT. MLLW.
AND BENCHMARK "11" 1946 ELEV 15.47 FT. MLLW.
TIDE GAUGE LOCATED AT TIBURON NET DEPOT.

ALAMEDA COUNTY
RICHMOND OUTER HARBOR
CONDITION SURVEY
25 OCTOBER 2022

Sheet
Number
2 of 4



PRELIMINARY ISSUE
THIS PLAN ISSUED FOR
ADVANCE INFORMATION ONLY



FLOOD →
← EBB

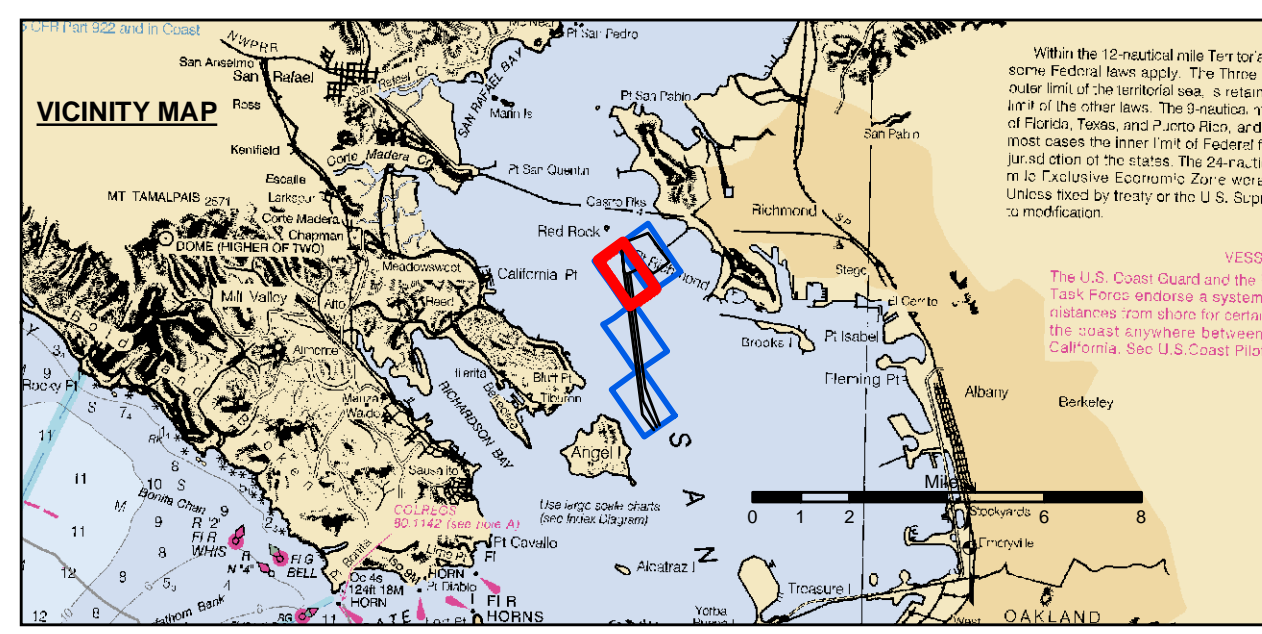
US Army Corps of Engineers
San Francisco District
450 Golden Gate Ave
San Francisco, CA 94102

DISCLAIMER
The United States Government furnishes this information as a public service. It is not intended to be used for any purpose other than the intended purpose. The user is responsible for the results of any application of the data for other than the intended purpose. The United States Government makes no warranty, expressed or implied, concerning the accuracy, completeness, or reliability of the information furnished. The United States Government assumes no liability whatsoever to any person by reason of any use made thereof. These data belong to the Government. Therefore the recipient may not transfer these data to others without also transferring this disclaimer.

Prepared Under the Direction of	LT COLONEL K.E. ARNETT	Chart Date	Oct 27, 2022
Surveyed By	PDT	Designed by	PDT
Plotted By	PDT	Drawn by	PDT
Checked By	PDT		
Approved	Chief, Construction Branch		

CALIFORNIA
ALAMEDA COUNTY
**RICHMOND OUTER HARBOR
CONDITION SURVEY**
25 OCTOBER 2022

**Sheet
Reference
Number**
3 of 4



Federal Navigation Channel	Beacon, General	Contours
Shoaling Area	Obstruction Point	-45
Placement Area	Navigation Buoy	-44
Anchorage Area	Navigation Buoy	-43
Wreck Area	Shoalest Sounding*	-42
Submerged Wreck		-41
Angle Point		

NOTES:
HORIZONTAL COORDINATE SYSTEM:
NORTH AMERICAN DATUM OF 1983 (NAD83), PROJECTED TO THE STATE PLANE COORDINATE SYSTEM (SPCS), CALIFORNIA ZONE III. DISTANCE UNITS IN U.S. SURVEY FEET.
VERTICAL DATUM:
SOUNDINGS ARE SHOWN IN FEET AND INDICATE DEPTHS BELOW MEAN LOWER LOW WATER.
THE INFORMATION DEPICTED ON THIS MAP REPRESENTS THE RESULTS OF A SURVEY CONDUCTED ON THE DATE INDICATED AND CAN ONLY BE CONSIDERED TO REPRESENT THE GENERAL CONDITION EXISTING AT THAT TIME.
*SHOALEST SOUNDING PER QUARTER PER REACH DRAWING NOT TO BE USED FOR NAVIGATION.
ONLY CHANNEL CONDITION AT DATE OF SURVEY.
THE LOCATION OF ALL NAVIGATION AIDS ARE BASED ON INFORMATION PROVIDED BY THE U.S. COAST GUARD. BUOY LOCATION REPRESENT THE POSITION OF THE SINKER ONLY.
SURVEYED BY THE CORPS OF ENGINEERS.

SOUNDINGS WERE TAKEN BY FATHOMETER AND ARE SHOWN TO THE NEAREST TENTH OF A FOOT.
SOUNDINGS ARE BASED ON THE DATUM OF MEAN LOWER LOW WATER AT THE LOCALITY.
BASE MAPS ARE USDA NAIP 2010.
THE PROJECT DEPTHS ARE AS FOLLOWS:
SOUTHAMPTON SHOALS CHANNEL -45 FEET.
LONG WHARF MANEUVERING AREA -45 FEET.
1:00 INDICATED THE NUMBER AND BEGINNING OF A LINE OF SOUNDINGS.
HORIZONTAL CONTROL:
HORIZONTAL POSITIONING: COAST GUARD DGPS
VERTICAL TIDES: INTERPOLATED FROM NOAA ONLINE TIDE STATIONS:
941 4290 - RICHMOND, CA
941 4290 - SAN FRANCISCO, CA
VERTICAL CONTROL:
(SOUTHAMPTON SHOALS & LONG WHARF MANEUVERING) BENCHMARK "10" 1937 ELEV 15.86 FT. MLLW.
AND BENCHMARK "11" 1946 ELEV 15.47 FT. MLLW.
TIDE GAUGE LOCATED AT TIBURON NET DEPOT.