

US Army Corps of Engineers
 San Francisco District
 450 Golden Gate Ave
 San Francisco, CA 94102

DISCLAIMER
 The United States Government furnishes this information for the purpose of providing accurate and reliable data for the use of the recipient. The United States Government makes no warranty, expressed or implied, concerning the accuracy, completeness, or timeliness of the information. The recipient is responsible for the results of any application of the data for other than its intended purpose. The recipient may not transfer these data to others without also transferring this disclaimer.

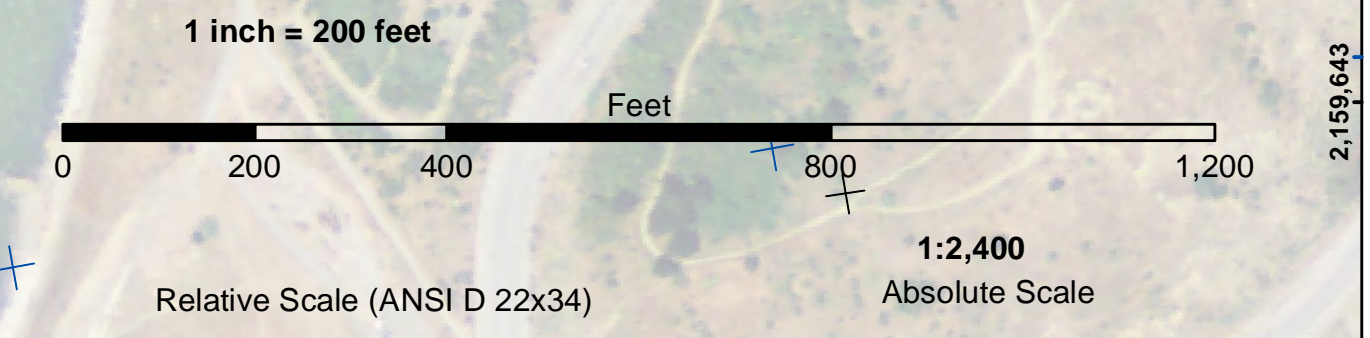
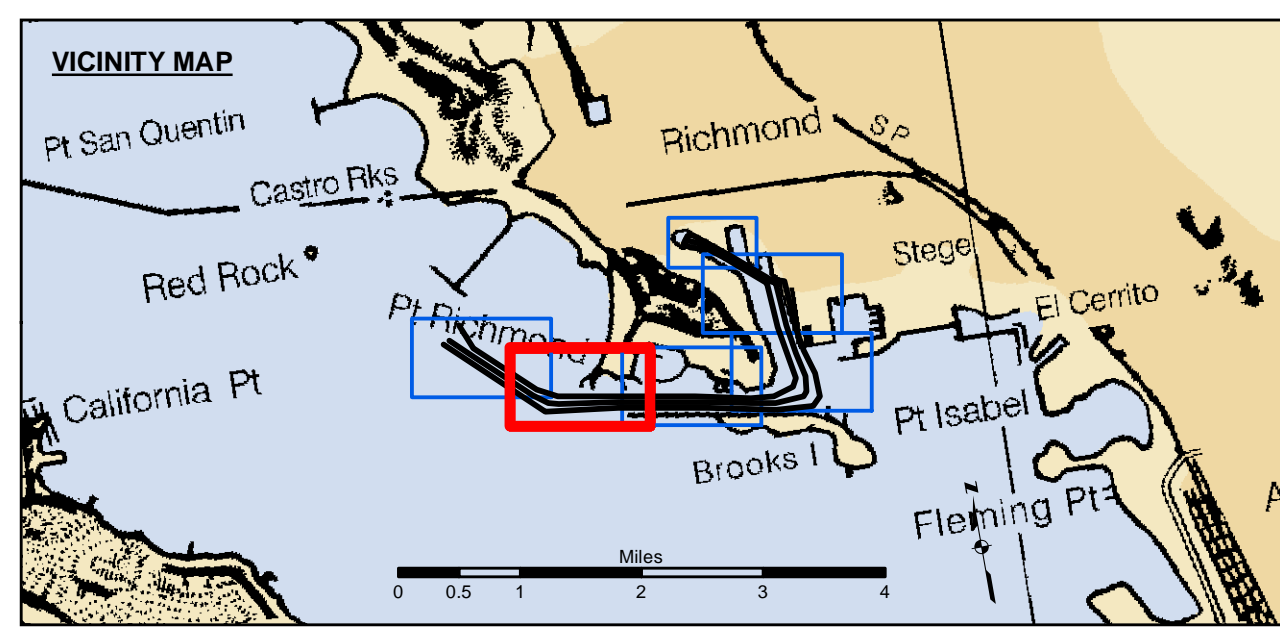


Chart Date:	Jan 19, 2022
Designed by:	PDT
Drawn by:	PDT
Surveyed By:	KEVIN P. ARNETT
Plotted By:	PDT
Checked By:	PDT
Approved:	Chief, Construction Branch



Federal Navigation Channel	Beacon, General	Contours
Shoaling Area	Obstruction Point	-37
Placement Area	Navigation Buoy	-36
Anchorage Area	Navigation Buoy	-35
Wreck Area	Shoalest Sounding*	-34
Submerged Wreck		-33
Angle Point		

NOTES:
 HORIZONTAL COORDINATE SYSTEM: NORTH AMERICAN DATUM OF 1983 (NAD83), PROJECTED TO THE STATE PLANE COORDINATE SYSTEM (SPCS), CALIFORNIA ZONE III. DISTANCE UNITS IN U.S. SURVEY FEET.
 VERTICAL DATUM: SOUNDINGS ARE SHOWN IN FEET AND INDICATE DEPTHS BELOW MEAN LOWER LOW WATER.
 THE INFORMATION DEPICTED ON THIS MAP REPRESENTS THE RESULTS OF A SURVEY CONDUCTED ON THE DATE INDICATED AND CAN ONLY BE CONSIDERED TO REPRESENT THE GENERAL CONDITION EXISTING AT THAT TIME.
 *SHOALEST SOUNDING PER QUARTER PER REACH

DRAWING NOT TO BE USED FOR NAVIGATION. ONLY CHANNEL CONDITION AT DATE OF SURVEY. THE LOCATION OF ALL NAVIGATION AIDS ARE BASED ON INFORMATION PROVIDED BY THE U.S. COAST GUARD BUOY LOCATION REPRESENT THE POSITION OF THE SINKER ONLY.

SOUNDINGS WERE TAKEN BY FATHOMETER AND ARE SHOWN TO THE NEAREST TENTH OF A FOOT. SOUNDINGS ARE BASED ON THE DATUM OF MEAN LOWER LOW WATER AT THE LOCALITY.

BASE MAPS ARE USDA NAIP 2010.

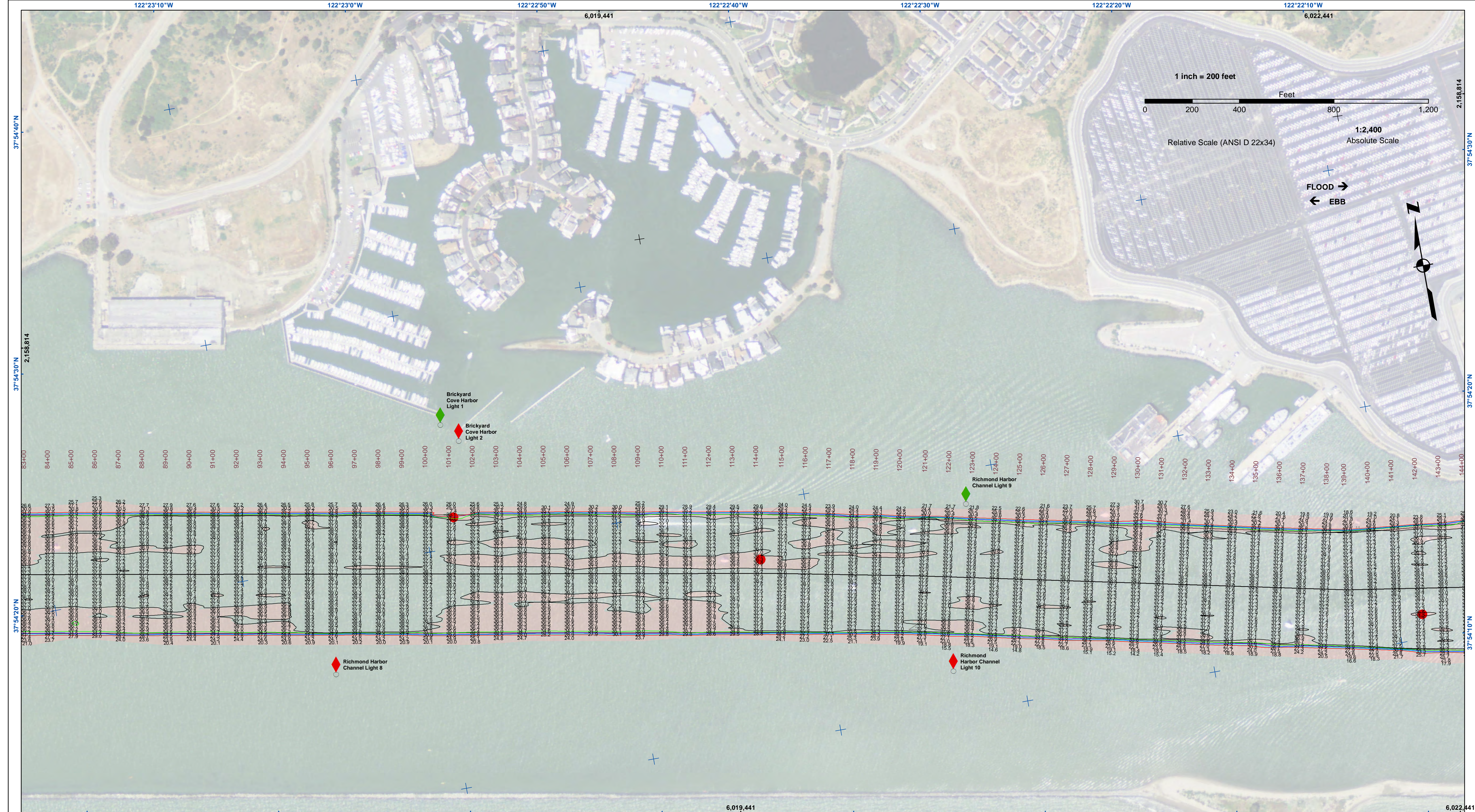
THE PROJECT DEPTHS ARE AS FOLLOWS:
 INNER HARBOR CHANNEL -37.5 FEET.
 SANTE FE CHANNEL -30 FEET.

(INNER HARBOR CHANNEL) BENCHMARK A-688 ELEV 15.81 FT. MLLW.
 BENCHMARK #2 (1032) USCGS DISK OLD FORD PLANT 16.0825 FT. MLLW.
 B.M. LS 2769 CITY OF RICHMOND DISK PAVEMENT 13.971 FT. MLLW.

TIDE GAGE LOCATION: MON B-1.
 HORIZONTAL GPS CONTROL: COAST GUARD D-BEACON.
 VERTICAL CONTROL: BENCHMARK, MLLW ELEV., AGENCY

CALIFORNIA
 ALAMEDA COUNTY
RICHMOND INNER HARBOR
 POST-DREDGE SURVEY
 09 NOVEMBER - 02 DECEMBER 2021

Sheet
Reference
Number
2 of 6



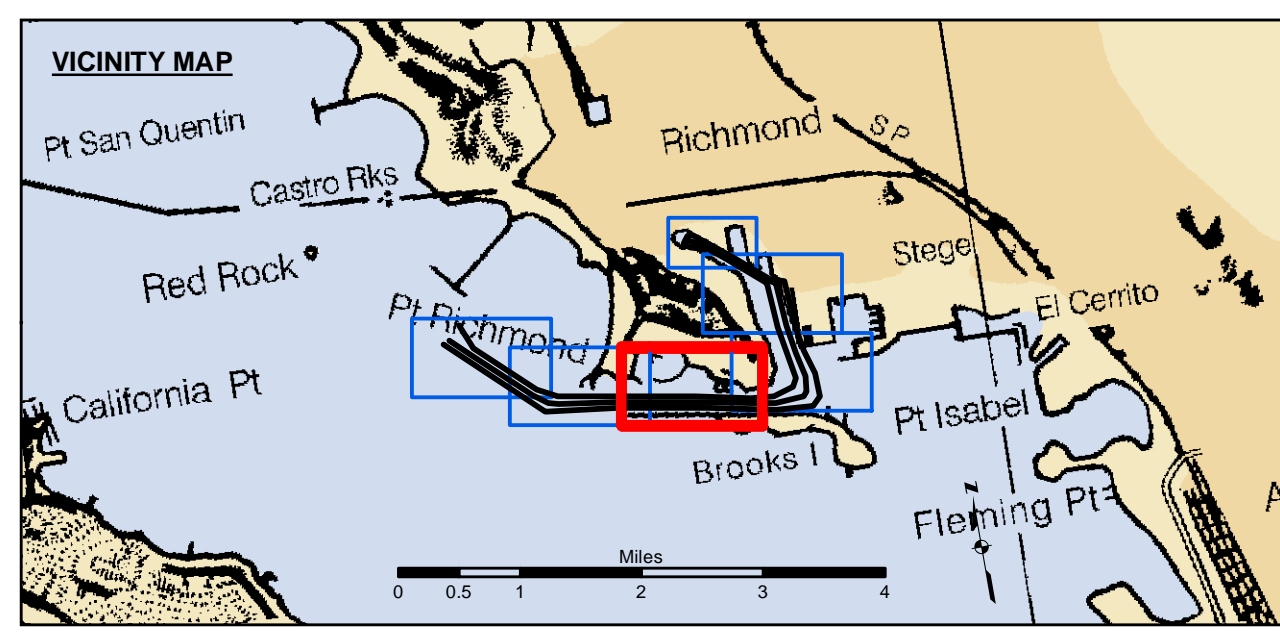
US Army Corps of Engineers
 San Francisco District
 450 Golden Gate Ave
 San Francisco, CA 94102

DISCLAIMER
 The United States Government furnishes this information for the general information of the recipient. The United States Government makes no warranty, expressed or implied, concerning the accuracy, completeness, or timeliness of the information. The United States Government is not responsible for the results of any application of the information. The recipient shall assume all liability for any use of the information. These data belong to the Government. Therefore, the recipient may not transfer these data to others without also transferring this Disclaimer.

Chart Date:	Jan 19, 2022
Designed by:	PDT
Plotted By:	PDT
Checked By:	PDT
Drawn by:	PDT

ALAMEDA COUNTY
RICHMOND INNER HARBOR
 POST-DREDGE SURVEY
 09 NOVEMBER - 02 DECEMBER 2021

Sheet
Reference
Number
3 of 6

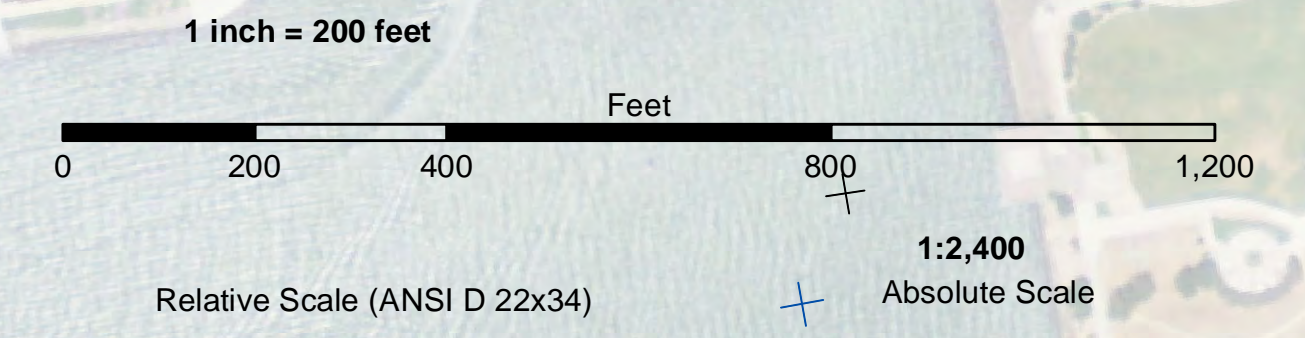
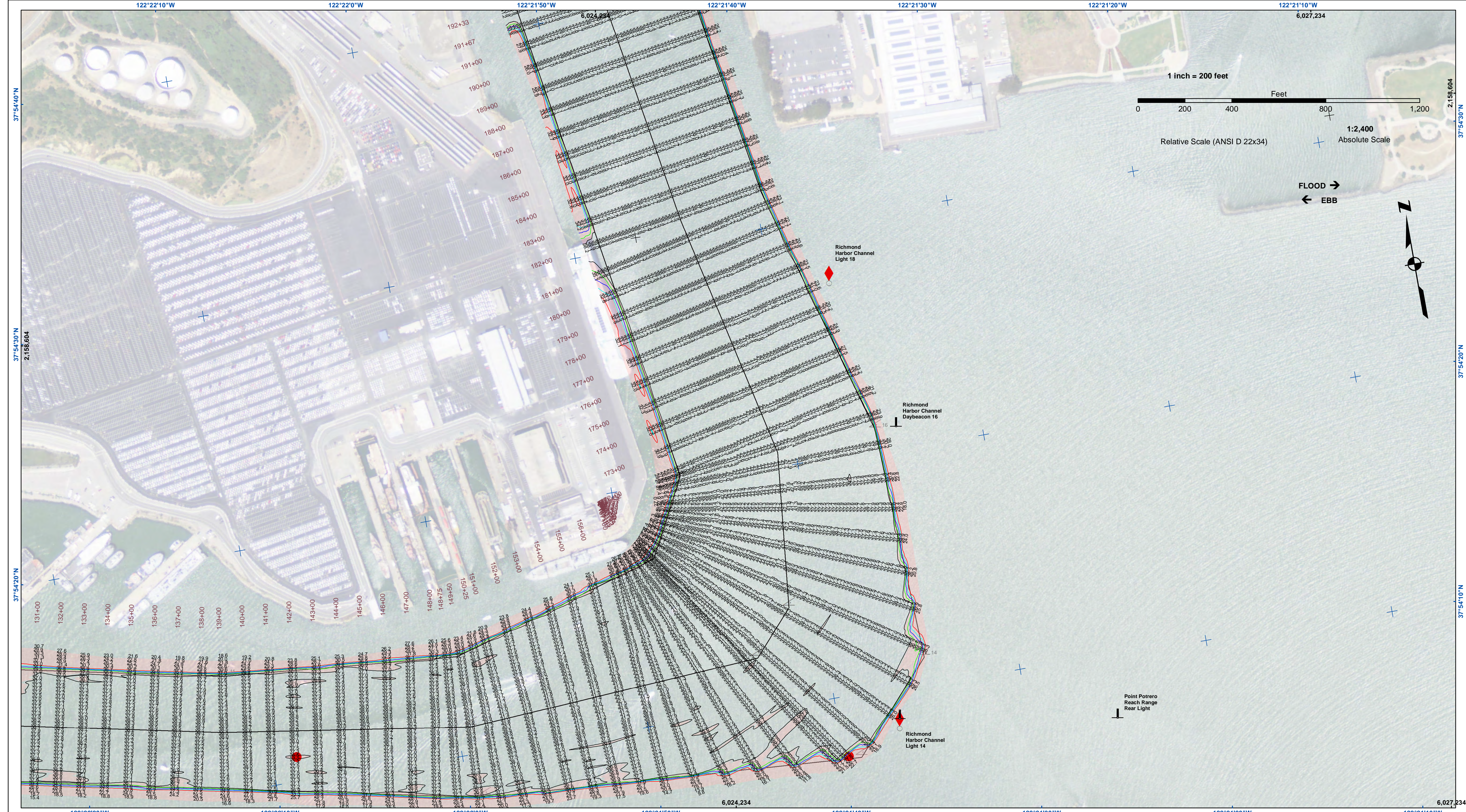


Federal Navigation Channel	Beacon, General	Contours
Shoaling Area	Obstruction Point	-37
Placement Area	Navigation Buoy	-36
Anchorage Area	Navigation Buoy	-35
Wreck Area	Shoalest Sounding*	-34
Submerged Wreck		-33
Angle Point		

NOTES:
 HORIZONTAL COORDINATE SYSTEM: NORTH AMERICAN DATUM OF 1983 (NAD83), PROJECTED TO THE STATE PLANE COORDINATE SYSTEM (SPCS), CALIFORNIA ZONE III. DISTANCE UNITS IN U.S. SURVEY FEET.
 VERTICAL DATUM: SOUNDINGS ARE SHOWN IN FEET AND INDICATE DEPTHS BELOW MEAN LOWER LOW WATER.
 THE INFORMATION DEPICTED ON THIS MAP REPRESENTS THE RESULTS OF A SURVEY CONDUCTED ON THE DATE INDICATED AND CAN ONLY BE CONSIDERED TO REPRESENT THE GENERAL CONDITION EXISTING AT THAT TIME.
 *SHOALEST SOUNDING PER QUARTER PER REACH

DRAWING NOT TO BE USED FOR NAVIGATION. ONLY CHANNEL CONDITION AT DATE OF SURVEY. THE LOCATION OF ALL NAVIGATION AIDS ARE BASED ON INFORMATION PROVIDED BY THE U.S. COAST GUARD BUOY LOCATION REPRESENT THE POSITION OF THE SINKER ONLY.

SURVEYED BY THE CORPS OF ENGINEERS.
 SOUNDINGS WERE TAKEN BY FATHOMETER AND ARE SHOWN TO THE NEAREST TENTH OF A FOOT.
 SOUNDINGS ARE BASED ON THE DATUM OF MEAN LOWER LOW WATER AT THE LOCALITY.
 BASE MAPS ARE USDA NAIP 2010.
 THE PROJECT DEPTHS ARE AS FOLLOWS:
 INNER HARBOR CHANNEL -37.5 FEET.
 SANTE FE CHANNEL -30 FEET.
 (INNER HARBOR CHANNEL) BENCHMARK A-658 ELEV 15.81 FT. MLLW.
 BENCHMARK #2 (1032) USCGS DISK OLD FORD PLANT 16.0825 FT. MLLW.
 B.M. LS 2769 CITY OF RICHMOND DISK PAVEMENT 13.971 FT. MLLW.
 TIDE GAGE LOCATION: MON B-1.
 HORIZONTAL GPS CONTROL: COAST GUARD D-BEACON.
 VERTICAL CONTROL: BENCHMARK, MLLW ELEV., AGENCY



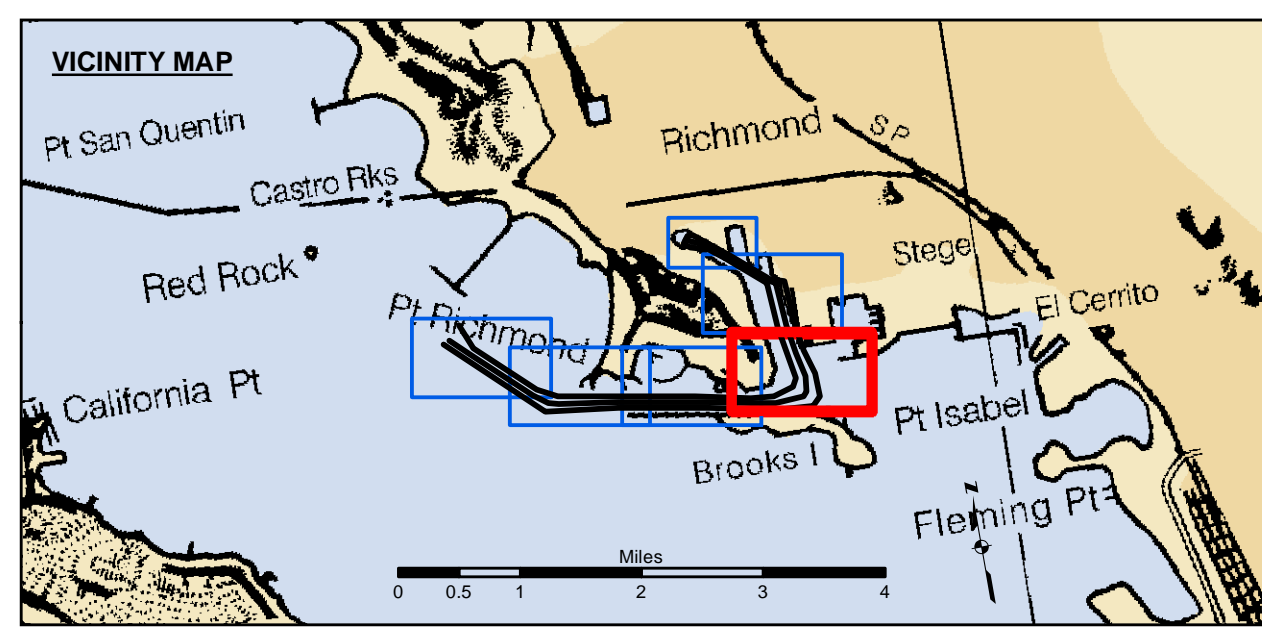
US Army Corps of Engineers
 San Francisco District
 450 Golden Gate Ave
 San Francisco, CA 94102

DISCLAIMER
 The United States Government furnishes this information as a service to the public and does not warrant, express or implied, the accuracy, completeness, or reliability of the information. The user is responsible for the results of any application of the data for other than its intended purpose. The United States Government makes no warranty, express or implied, concerning the accuracy, completeness, or reliability of the information. The user is responsible for the results of any application of the data for other than its intended purpose. These data belong to the Government. Therefore, the user is not to disseminate these data to others without also transferring this Disclaimer.

Chart Date:	Jan 19, 2022
Designed by:	PDT
Drawn by:	PDT
Surveyed By:	KEVIN P. ARNETT
Plotted By:	PDT
Checked By:	PDT
Approved:	Chief, Construction Branch

CALIFORNIA
 ALAMEDA COUNTY
RICHMOND INNER HARBOR
 POST-DREDGE SURVEY
 09 NOVEMBER - 02 DECEMBER 2021

Sheet
Reference
Number
4 of 6



Federal Navigation Channel	Beacon, General	Contours
Shoaling Area	Obstruction Point	-37
Placement Area	Navigation Buoy	-36
Anchorage Area	Navigation Buoy	-35
Wreck Area	Shoalest Sounding*	-34
Submerged Wreck		-33
Angle Point		

NOTES:
 HORIZONTAL COORDINATE SYSTEM: NORTH AMERICAN DATUM OF 1983 (NAD83), PROJECTED TO THE STATE PLANE COORDINATE SYSTEM (SPCS), CALIFORNIA ZONE III. DISTANCE UNITS IN U.S. SURVEY FEET.
 VERTICAL DATUM: SOUNDINGS ARE SHOWN IN FEET AND INDICATE DEPTHS BELOW MEAN LOWER LOW WATER.
 THE INFORMATION DEPICTED ON THIS MAP REPRESENTS THE RESULTS OF A SURVEY CONDUCTED ON THE DATE INDICATED AND CAN ONLY BE CONSIDERED TO REPRESENT THE GENERAL CONDITION EXISTING AT THAT TIME.
 *SHOALEST SOUNDING PER QUARTER PER REACH

DRAWING NOT TO BE USED FOR NAVIGATION. ONLY CHANNEL CONDITION AT DATE OF SURVEY. THE LOCATION OF ALL NAVIGATION AIDS ARE BASED ON INFORMATION PROVIDED BY THE U.S. COAST GUARD BUOY LOCATION REPRESENT THE POSITION OF THE SINKER ONLY.

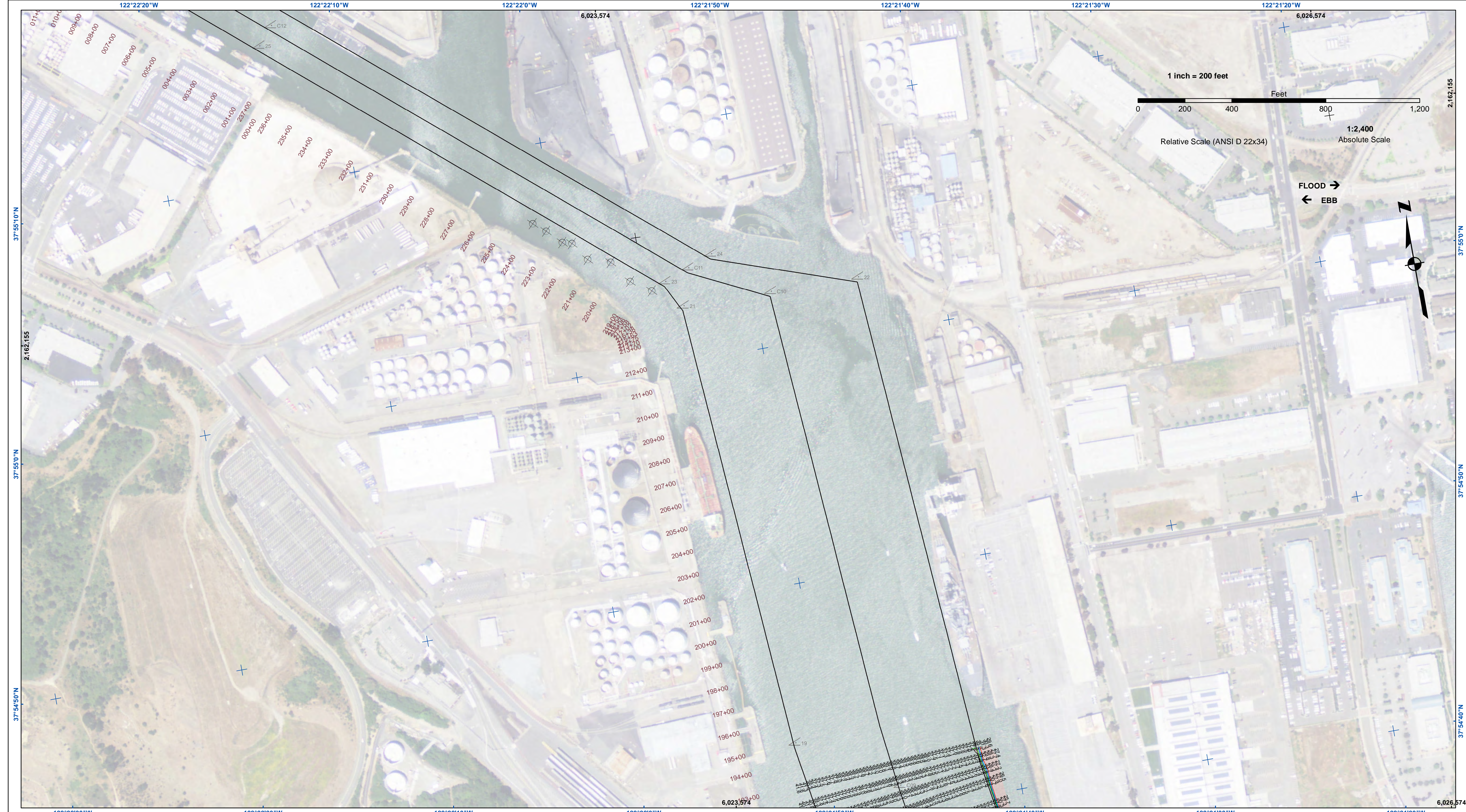
SOUNDINGS WERE TAKEN BY FATHOMETER AND ARE SHOWN TO THE NEAREST TENTH OF A FOOT. SOUNDINGS ARE BASED ON THE DATUM OF MEAN LOWER LOW WATER AT THE LOCALITY.

BASE MAPS ARE USDA NAIP 2010.

THE PROJECT DEPTHS ARE AS FOLLOWS:
 INNER HARBOR CHANNEL -37.5 FEET.
 SANTE FE CHANNEL -30 FEET.

(INNER HARBOR CHANNEL) BENCHMARK A-688 ELEV 15.81 FT. MLLW.
 BENCHMARK #2 (1032) USCGS DISK OLD FORD PLANT 16.0825 FT. MLLW.
 B.M. LS 2769 CITY OF RICHMOND DISK PAVEMENT 13.971 FT. MLLW.

TIDE GAGE LOCATION: MON B-1.
 HORIZONTAL GPS CONTROL: COAST GUARD D-BEACON.
 VERTICAL CONTROL: BENCHMARK, MLLW ELEV., AGENCY



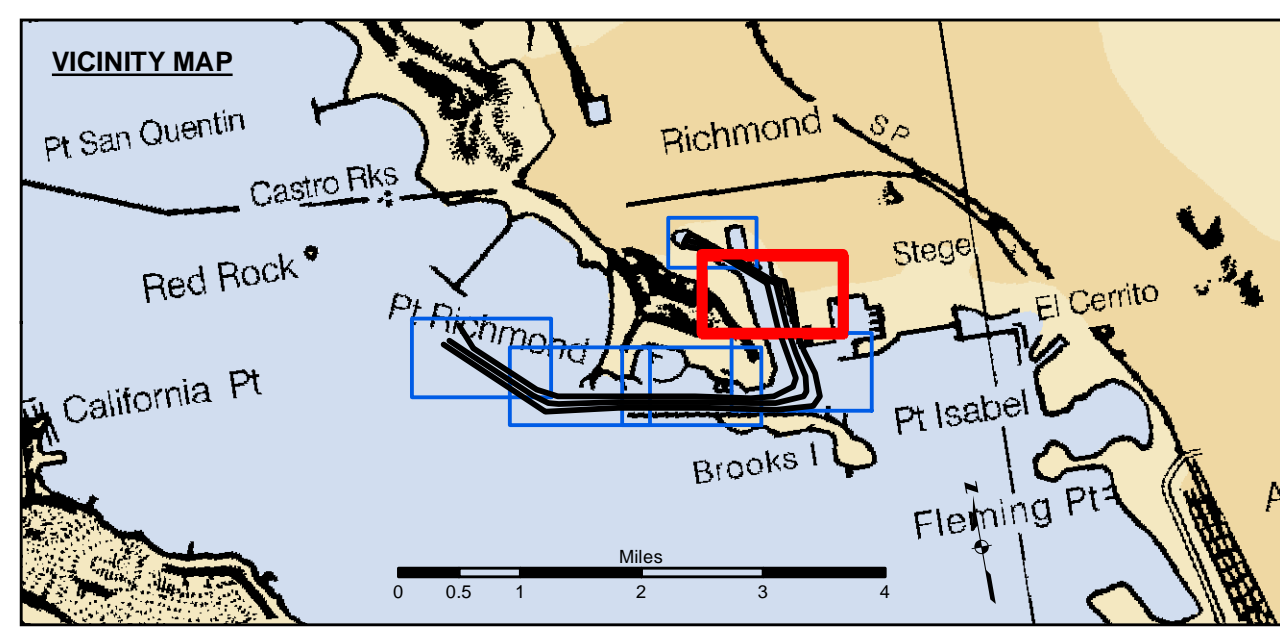
US Army Corps of Engineers
 San Francisco District
 450 Golden Gate Ave
 San Francisco, CA 94102

1 inch = 200 feet
 Feet
 0 200 400 800 1,200
 Relative Scale (ANSI D 22x34) 1:2,400 Absolute Scale

FLOOD →
← EBB

DISCLAIMER: The United States Government furnishes this information as a public service. It is not intended to be used for any purpose other than the intended purpose. The United States Government makes no warranty, expressed or implied, concerning the accuracy, completeness, or reliability of the information. The user assumes all liability for any use of the information. These data belong to the Government. Therefore, the user may not transfer these data to others without also transferring this Disclaimer.

Chart Date:	Jan 19, 2022
Designed by:	PDT
Drawn by:	PDT
Checked by:	PDT
Approved:	Chief, Construction Branch
Surveyed By:	KEVIN P. ARNETT
Plotted By:	PDT
Flashed By:	PDT



Federal Navigation Channel	Beacon, General	Contours
Shoaling Area	Obstruction Point	-37
Placement Area	Navigation Buoy	-36
Anchorage Area	Navigation Buoy	-35
Wreck Area	Shoalest Sounding*	-34
Submerged Wreck		-33
Angle Point		

NOTES:
 HORIZONTAL COORDINATE SYSTEM: NORTH AMERICAN DATUM OF 1983 (NAD83), PROJECTED TO THE STATE PLANE COORDINATE SYSTEM (SPCS), CALIFORNIA ZONE III. DISTANCE UNITS IN U.S. SURVEY FEET.
 VERTICAL DATUM: SOUNDINGS ARE SHOWN IN FEET AND INDICATE DEPTHS BELOW MEAN LOWER LOW WATER.
 THE INFORMATION DEPICTED ON THIS MAP REPRESENTS THE RESULTS OF A SURVEY CONDUCTED ON THE DATE INDICATED AND CAN ONLY BE CONSIDERED TO REPRESENT THE GENERAL CONDITION EXISTING AT THAT TIME.
 *SHOALEST SOUNDING PER QUARTER PER REACH

DRAWING NOT TO BE USED FOR NAVIGATION. ONLY CHANNEL CONDITION AT DATE OF SURVEY. THE LOCATION OF ALL NAVIGATION AIDS ARE BASED ON INFORMATION PROVIDED BY THE U.S. COAST GUARD BUOY LOCATION REPRESENT THE POSITION OF THE SINKER ONLY.

SOUNDINGS WERE TAKEN BY FATHOMETER AND ARE SHOWN TO THE NEAREST TENTH OF A FOOT. SOUNDINGS ARE BASED ON THE DATUM OF MEAN LOWER LOW WATER AT THE LOCALITY.

BASE MAPS ARE USDA NAIP 2010.

THE PROJECT DEPTHS ARE AS FOLLOWS:
 INNER HARBOR CHANNEL -37.5 FEET.
 SANTE FE CHANNEL -30 FEET.

(INNER HARBOR CHANNEL) BENCHMARK A-658 ELEV 15.81 FT. MLLW.
 BENCHMARK #2 (103) USCGS DISK OLD FORD PLANT 16.825 FT. MLLW.
 B.M. LS 2769 CITY OF RICHMOND DISK PAVEMENT 13.971 FT. MLLW.

TIDE GAGE LOCATION: MON B-1.
 HORIZONTAL GPS CONTROL: COAST GUARD D-BEACON.
 VERTICAL CONTROL: BENCHMARK, MLLW ELEV., AGENCY

CALIFORNIA
 ALAMEDA COUNTY
RICHMOND INNER HARBOR
 POST-DREDGE SURVEY
 09 NOVEMBER - 02 DECEMBER 2021

Sheet
Number
5 of 6