

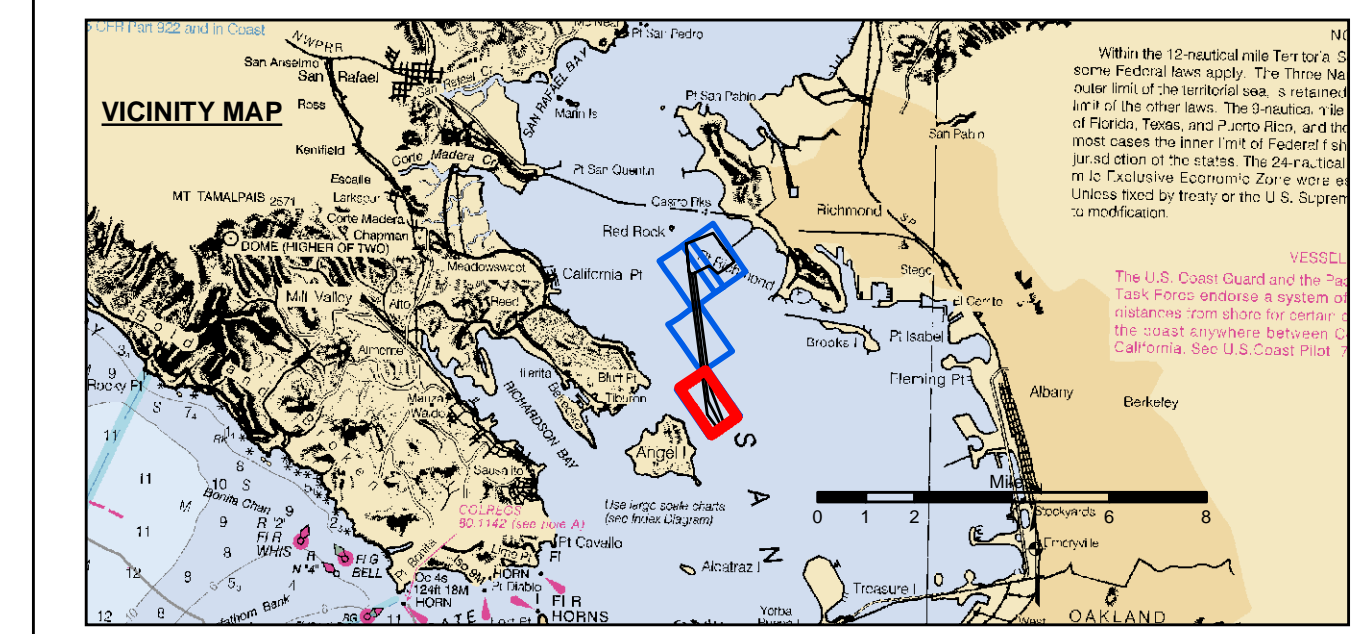
PRELIMINARY ISSUE
THIS PLAN ISSUED FOR
ADVANCE INFORMATION ONLY

0 200 400 800 1,200
Feet
1 inch = 200 feet
Relative Scale (ANSI D 22x34)
1:2,400
Absolute Scale

US Army Corps of Engineers
San Francisco District
450 Golden Gate Ave
San Francisco, CA 94102

DISCLAIMER
The United States Government furnishes this information as a service to the public and does not warrant, express or implied, the accuracy, completeness, or reliability of the information. The user is responsible for the results of any application of the information. The United States Government assumes no liability whatsoever for any use of the information, including the use of the information for purposes not intended by the Government. These data belong to the Government. Therefore, the recipient may not transfer these data to others without also transferring this disclaimer.

Chart Date:	Mar 19, 2021
Designed by:	PDT
Drawn by:	PDT
Surveyed By:	
Plotted By:	PDT
Checked By:	PDT
Approved:	Chief, Construction Branch



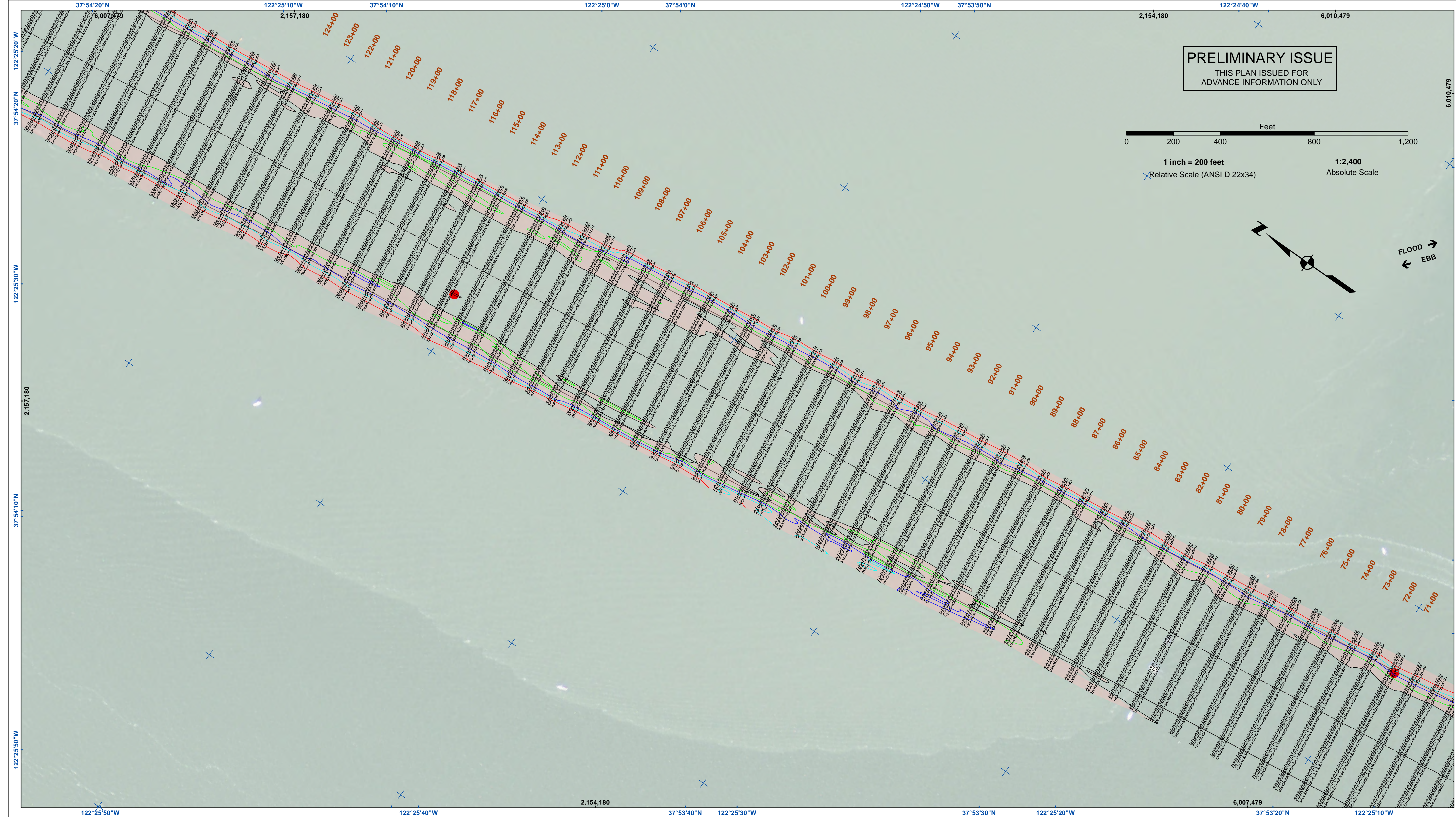
	Federal Navigation Channel		Beacon, General		Contours
	Shoaling Area		Obstruction Point		-45
	Placement Area		Navigation Buoy		-44
	Anchorage Area		Navigation Buoy		-43
	Wreck Area		Shoalest Sounding*		-42
	Submerged Wreck				-41
	Angle Point				

NOTES:
HORIZONTAL COORDINATE SYSTEM:
NORTH AMERICAN DATUM OF 1983 (NAD83), PROJECTED TO THE STATE PLANE COORDINATE SYSTEM (SPCS), CALIFORNIA ZONE III. DISTANCE UNITS IN U.S. SURVEY FEET.
VERTICAL DATUM:
SOUNDINGS ARE SHOWN IN FEET AND INDICATE DEPTHS BELOW MEAN LOWER LOW WATER.
THE INFORMATION DEPICTED ON THIS MAP REPRESENTS THE RESULTS OF A SURVEY CONDUCTED ON THE DATE INDICATED AND CAN ONLY BE CONSIDERED TO REPRESENT THE GENERAL CONDITION EXISTING AT THAT TIME.
*SHOALEST SOUNDING PER QUARTER PER REACH DRAWING NOT TO BE USED FOR NAVIGATION.
ONLY CHANNEL CONDITION AT DATE OF SURVEY.
THE LOCATION OF ALL NAVIGATION AIDS ARE BASED ON INFORMATION PROVIDED BY THE U.S. COAST GUARD. BUOY LOCATION REPRESENT THE POSITION OF THE SINKER ONLY.
SURVEYED BY THE CORPS OF ENGINEERS.

SOUNDINGS WERE TAKEN BY FATHOMETER AND ARE SHOWN TO THE NEAREST TENTH OF A FOOT.
SOUNDINGS ARE BASED ON THE DATUM OF MEAN LOWER LOW WATER AT THE LOCALITY.
BASE MAPS ARE USDA NAIP 2010.
THE PROJECT DEPTHS ARE AS FOLLOWS:
SOUTHAMPTON SHOALS CHANNEL -45 FEET.
LONG WHARF MANEUVERING AREA -45 FEET.
1:00 INDICATED THE NUMBER AND BEGINNING OF A LINE OF SOUNDINGS.
HORIZONTAL CONTROL:
HORIZONTAL POSITIONING: COAST GUARD DGPS
VERTICAL TIDES: INTERPOLATED FROM NOAA ONLINE TIDE STATIONS:
941 4863 - RICHMOND, CA
941 4290 - SAN FRANCISCO, CA
VERTICAL CONTROL:
(SOUTHAMPTON SHOALS & LONG WHARF MANEUVERING) BENCHMARK "10" 1937 ELEV 15.86 FT. MLLW.
AND BENCHMARK "11" 1946 ELEV 15.47 FT. MLLW.
TIDE GAUGE LOCATED AT TIBURON NET DEPOT.

CALIFORNIA
ALAMEDA COUNTY
RICHMOND OUTER HARBOR
SOUTHAMPTON SHOALS
CONDITION SURVEY
16 MARCH 2021

Sheet
Reference
Number
1 of 4



US Army Corps of Engineers
 San Francisco District
 450 Golden Gate Ave
 San Francisco, CA 94102

PRELIMINARY ISSUE
 THIS PLAN ISSUED FOR
 ADVANCE INFORMATION ONLY

1 inch = 200 feet
 Relative Scale (ANSI D 22x34)
 1:2,400
 Absolute Scale

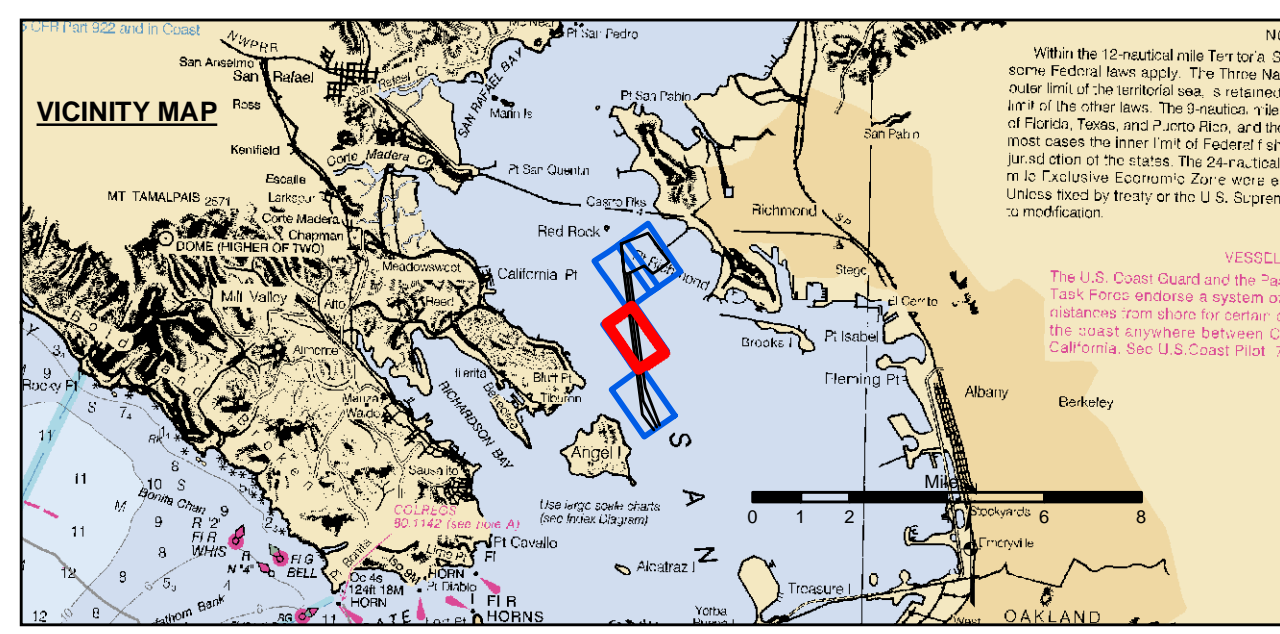
FLOOD
 ← EBB

DISCLAIMER
 The United States Government furnishes this information as a public service and does not warrant, express or implied, the accuracy, completeness, or reliability of the information. The user is responsible for the results of any use of the information. The user is responsible for the results of any use of the information. The user is responsible for the results of any use of the information. The user is responsible for the results of any use of the information.

Chart Date:	Mar 19, 2021
Designed by:	PDT
Plotted by:	PDT
Checked by:	PDT
Drawn by:	PDT

ALAMEDA COUNTY
 RICHMOND OUTER HARBOR
 SOUTHAMPTON SHOALS
 CONDITION SURVEY
 16 MARCH 2021

Sheet
 Number
 2 of 4



Federal Navigation Channel	Beacon, General	Contours
Shoaling Area	Obstruction Point	-45
Placement Area	Navigation Buoy	-44
Anchorage Area	Navigation Buoy	-43
Wreck Area	Shoalest Sounding*	-42
Submerged Wreck		-41
Angle Point		

NOTES:
 HORIZONTAL COORDINATE SYSTEM:
 NORTH AMERICAN DATUM OF 1983 (NAD83), PROJECTED TO THE STATE PLANE COORDINATE SYSTEM (SPCS), CALIFORNIA ZONE III. DISTANCE UNITS IN U.S. SURVEY FEET.

VERTICAL DATUM:
 SOUNDINGS ARE SHOWN IN FEET AND INDICATE DEPTHS BELOW MEAN LOWER LOW WATER.

THE INFORMATION DEPICTED ON THIS MAP REPRESENTS THE RESULTS OF A SURVEY CONDUCTED ON THE DATE INDICATED AND CAN ONLY BE CONSIDERED TO REPRESENT THE GENERAL CONDITION EXISTING AT THAT TIME.

*SHOALEST SOUNDING PER QUARTER PER REACH
 DRAWING NOT TO BE USED FOR NAVIGATION.
 ONLY CHANNEL CONDITION AT DATE OF SURVEY.
 THE LOCATION OF ALL NAVIGATION AIDS ARE BASED ON INFORMATION PROVIDED BY THE U.S. COAST GUARD. BUOY LOCATION REPRESENT THE POSITION OF THE SINKER ONLY.

SURVEYED BY THE CORPS OF ENGINEERS.

SOUNDINGS WERE TAKEN BY FATHOMETER AND ARE SHOWN TO THE NEAREST TENTH OF A FOOT.
 SOUNDINGS ARE BASED ON THE DATUM OF MEAN LOWER LOW WATER AT THE LOCALITY.

BASE MAPS ARE USDA NAIP 2010.

THE PROJECT DEPTHS ARE AS FOLLOWS:
 SOUTHAMPTON SHOALS CHANNEL -45 FEET.
 LONG WHARF MANEUVERING AREA -45 FEET.

1:00 INDICATED THE NUMBER AND BEGINNING OF A LINE OF SOUNDINGS.

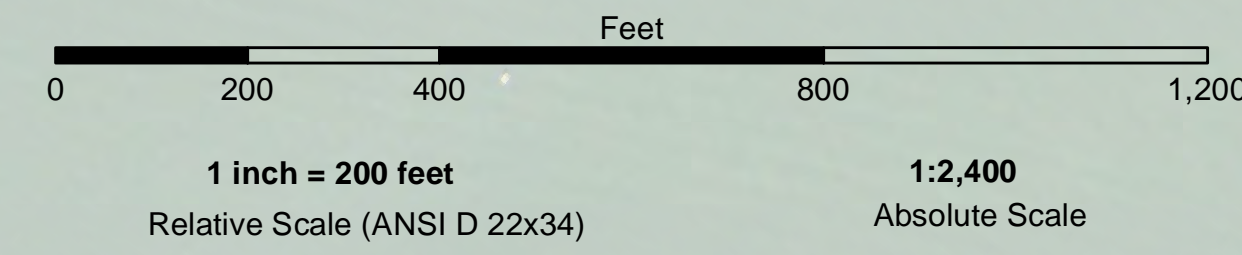
HORIZONTAL CONTROL:
 HORIZONTAL POSITIONING: COAST GUARD DGPS
 VERTICAL CONTROL:
 VERTICAL POSITIONS: INTERPOLATED FROM NOAA ONLINE TIDE STATIONS:
 941 4863 - RICHMOND, CA
 941 4290 - SAN FRANCISCO, CA

VERTICAL CONTROL:
 (SOUTHAMPTON SHOALS & LONG WHARF MANEUVERING) BENCHMARK "10" 1937 ELEV 15.86 FT. MLLW.
 AND BENCHMARK "11" 1946 ELEV 15.47 FT. MLLW.
 TIDE GAUGE LOCATED AT TIBURON NET DEPOT.



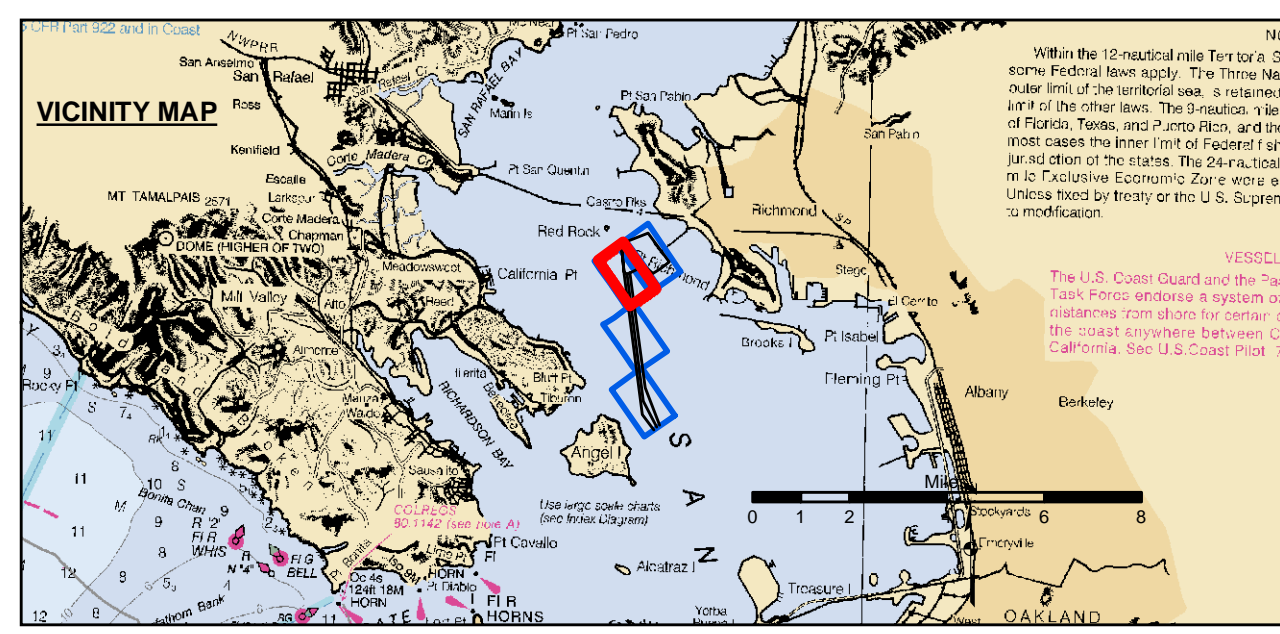
US Army Corps of Engineers
 San Francisco District
 450 Golden Gate Ave
 San Francisco, CA 94102

PRELIMINARY ISSUE
 THIS PLAN ISSUED FOR
 ADVANCE INFORMATION ONLY



DISCLAIMER
 The United States Government furnishes this information as a public service. It is not intended to be used for any purpose other than that for which it was prepared. The United States Government makes no warranty, expressed or implied, concerning the accuracy, completeness, or timeliness of the information. The user is responsible for the results of any use of the information. The United States Government shall not be liable for any damages, including any consequential damages, arising from the use of this information. These data belong to the Government. Therefore, the user shall not be held liable for any damages, including any consequential damages, arising from the use of these data by others without also transferring this disclaimer.

Prepared Under the Direction of	Chart Date
LT COLONEL C.E. CUNNINGHAM	Mar 19, 2021
Plotted By:	Designed by:
PDT	PDT
Checked By:	Drawn by:
PDT	PDT



Federal Navigation Channel	Beacon, General	Contours
Shoaling Area	Obstruction Point	-45
Placement Area	Navigation Buoy	-44
Anchorage Area	Navigation Buoy	-43
Wreck Area	Shoalest Sounding*	-42
Submerged Wreck		-41
Angle Point		

NOTES:
 HORIZONTAL COORDINATE SYSTEM:
 NORTH AMERICAN DATUM OF 1983 (NAD83), PROJECTED TO THE STATE PLANE COORDINATE SYSTEM (SPCS), CALIFORNIA ZONE III. DISTANCE UNITS IN U.S. SURVEY FEET.
 VERTICAL DATUM:
 SOUNDINGS ARE SHOWN IN FEET AND INDICATE DEPTHS BELOW MEAN LOWER LOW WATER.
 THE INFORMATION DEPICTED ON THIS MAP REPRESENTS THE RESULTS OF A SURVEY CONDUCTED ON THE DATE INDICATED AND CAN ONLY BE CONSIDERED TO REPRESENT THE GENERAL CONDITION EXISTING AT THAT TIME.
 *SHOALEST SOUNDING PER QUARTER PER REACH DRAWING NOT TO BE USED FOR NAVIGATION.
 ONLY CHANNEL CONDITION AT DATE OF SURVEY.
 THE LOCATION OF ALL NAVIGATION AIDS ARE BASED ON INFORMATION PROVIDED BY THE U.S. COAST GUARD. BUOY LOCATION REPRESENT THE POSITION OF THE SINKER ONLY.
 SURVEYED BY THE CORPS OF ENGINEERS.

SOUNDINGS WERE TAKEN BY FATHOMETER AND ARE SHOWN TO THE NEAREST TENTH OF A FOOT.
 SOUNDINGS ARE BASED ON THE DATUM OF MEAN LOWER LOW WATER AT THE LOCALITY.
 BASE MAPS ARE USDA NAIP 2010.
 THE PROJECT DEPTHS ARE AS FOLLOWS:
 SOUTHAMPTON SHOALS CHANNEL -45 FEET.
 LONG WHARF MANEUVERING AREA -45 FEET.
 1:00 INDICATED THE NUMBER AND BEGINNING OF A LINE OF SOUNDINGS.
 HORIZONTAL CONTROL:
 POSITIONING: COAST GUARD DGPS
 VERTICAL POSITIONS: INTERPOLATED FROM NOAA ONLINE TIDE STATIONS:
 941 4293 - RICHMOND, CA
 941 4290 - SAN FRANCISCO, CA
 VERTICAL CONTROL:
 (SOUTHAMPTON SHOALS & LONG WHARF MANEUVERING) BENCHMARK '10' 1937 ELEV 15.86 FT. MLLW.
 AND BENCHMARK '11' 1946 ELEV 15.47 FT. MLLW.
 TIDE GAUGE LOCATED AT TIBURON NET DEPOT.

ALAMEDA COUNTY
 RICHMOND OUTER HARBOR
 SOUTHAMPTON SHOALS
 CONDITION SURVEY
 16 MARCH 2021

Sheet Number
 3 of 4