

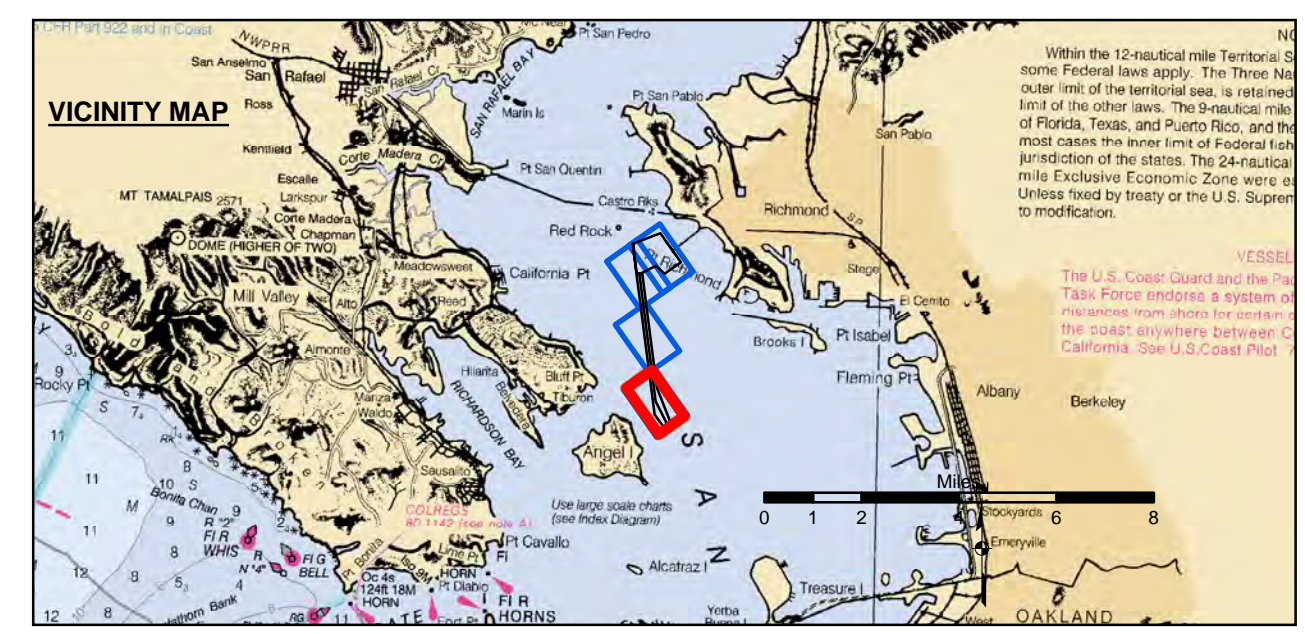
PRELIMINARY ISSUE
THIS PLAN ISSUED FOR
ADVANCE INFORMATION ONLY

0 200 400 800 1,200
Feet
1 inch = 200 feet
Relative Scale (ANSI D 22x34)
1:2,400
Absolute Scale

US Army Corps of Engineers
San Francisco District
1455 Market Street
San Francisco, CA 94103

DISCLAIMER
The United States Government furnishes this information for the general information of the user. The user is responsible for the results of any application of the data for other than its intended purpose. The user is responsible for the results of any application of the data for other than its intended purpose. The user is responsible for the results of any application of the data for other than its intended purpose.

Chart Date:	Nov 21, 2018
Surveyed By:	JOHN C. MORROW
Plotted By:	PDT
Designed By:	PDT
Checked By:	PDT
Drawn By:	PDT



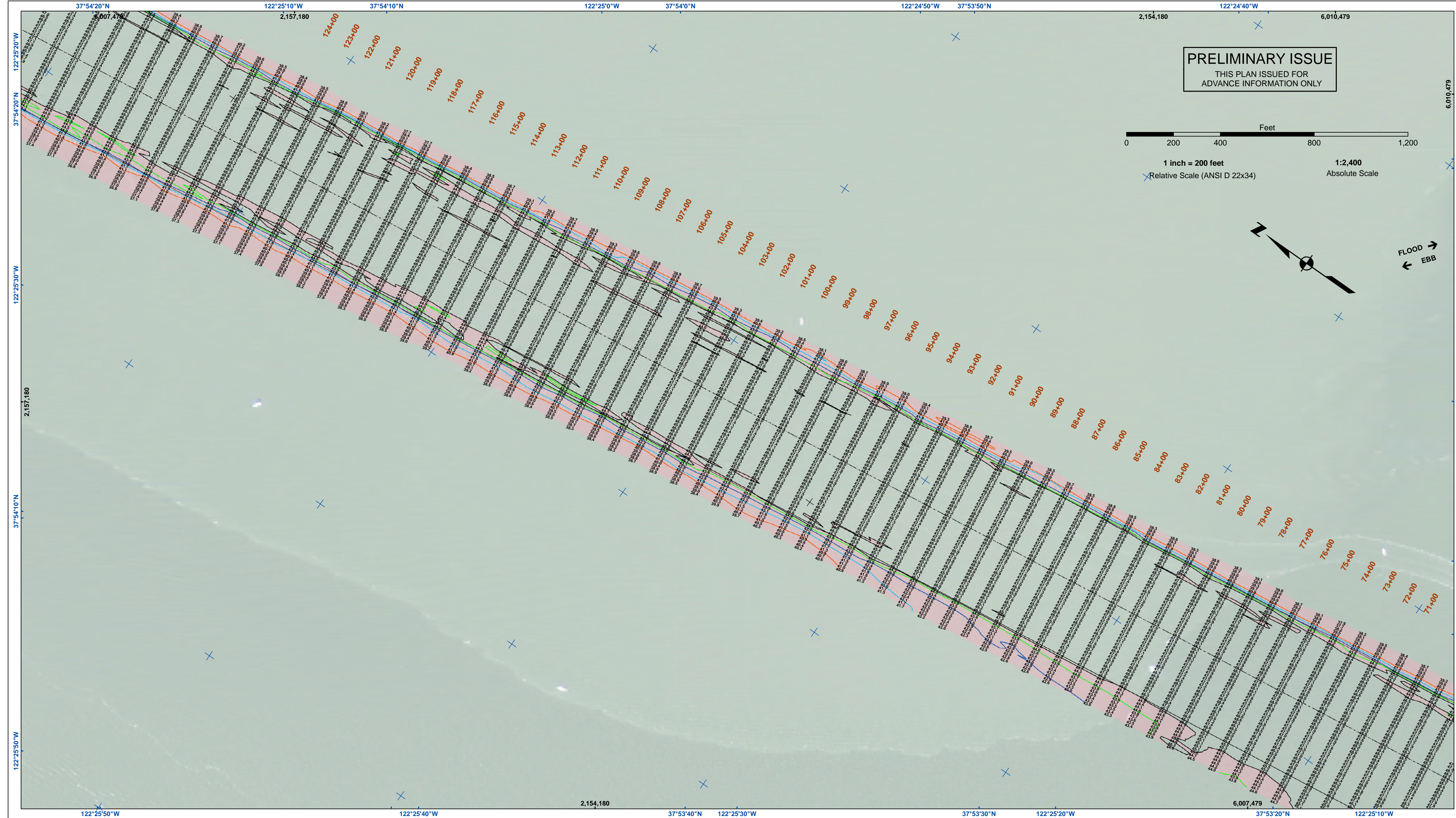
Federal Navigation Channel	Beacon, General	Contours
Shoaling Area	Obstruction Point	
Placement Area	Navigation Buoy	-45
Anchorage Area	Navigation Buoy	-44
Wreck Area	Shoalest Sounding*	-43
Submerged Wreck		-42
Angle Point		-41

NOTES:
HORIZONTAL COORDINATE SYSTEM:
NORTH AMERICAN DATUM OF 1983 (NAD83), PROJECTED TO THE STATE PLANE COORDINATE SYSTEM (SPCS), CALIFORNIA ZONE III. DISTANCE UNITS IN U.S. SURVEY FEET.
VERTICAL DATUM:
SOUNDINGS ARE SHOWN IN FEET AND INDICATE DEPTHS BELOW MEAN LOWER LOW WATER.
THE INFORMATION DEPICTED ON THIS MAP REPRESENTS THE RESULTS OF A SURVEY CONDUCTED ON THE DATE INDICATED AND CAN ONLY BE CONSIDERED TO REPRESENT THE GENERAL CONDITION EXISTING AT THAT TIME.
*SHOALEST SOUNDING PER QUARTER PER REACH
DRAWING NOT TO BE USED FOR NAVIGATION.
ONLY CHANNEL CONDITION AT DATE OF SURVEY.
THE LOCATION OF ALL NAVIGATION AIDS ARE BASED ON INFORMATION PROVIDED BY THE U.S. COAST GUARD. BUOY LOCATION REPRESENT THE POSITION OF THE SINKER ONLY.
SURVEYED BY THE CORPS OF ENGINEERS.

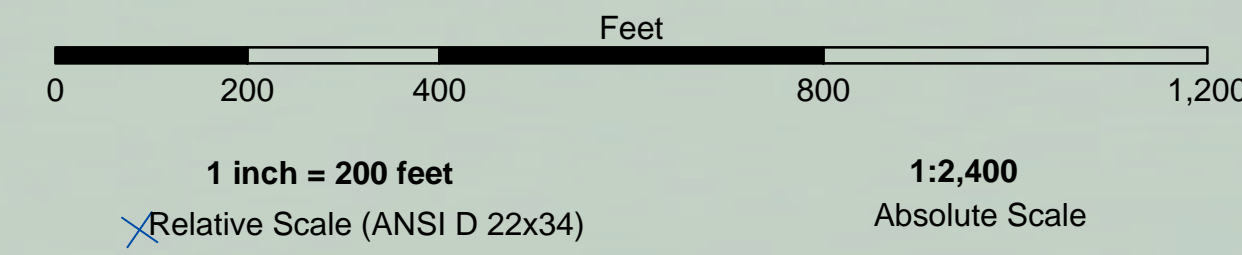
SOUNDINGS WERE TAKEN BY FATHOMETER AND ARE SHOWN TO THE NEAREST TENTH OF A FOOT.
SOUNDINGS ARE BASED ON THE DATUM OF MEAN LOWER LOW WATER AT THE LOCALITY.
BASE MAPS ARE USDA NAIP 2010.
THE PROJECT DEPTHS ARE AS FOLLOWS:
SOUTHAMPTON SHOALS CHANNEL -45 FEET.
LONG WHARF MANEUVERING AREA -45 FEET.
1:00 INDICATED THE NUMBER AND BEGINNING OF A LINE OF SOUNDINGS.
HORIZONTAL CONTROL:
HORIZONTAL POSITIONING: COAST GUARD DGPS
VERTICAL TIDES: INTERPOLATED FROM NOAA ONLINE TIDE STATIONS:
941 4290 - RICHMOND, CA
941 4290 - SAN FRANCISCO, CA
VERTICAL CONTROL:
(SOUTHAMPTON SHOALS & LONG WHARF MANEUVERING) BENCHMARK *11* 1937 ELEV 15.86 FT. MLLW.
AND BENCHMARK *11* 1946 ELEV 15.47 FT. MLLW.
TIDE GAUGE LOCATED AT TIBURON NET DEPOT.

ALAMEDA COUNTY
RICHMOND OUTER HARBOR
SOUTHAMPTON SHOALS
POST-DREDGE SURVEY
26 OCTOBER 2018

Sheet Number
1 of 4



PRELIMINARY ISSUE
THIS PLAN ISSUED FOR
ADVANCE INFORMATION ONLY

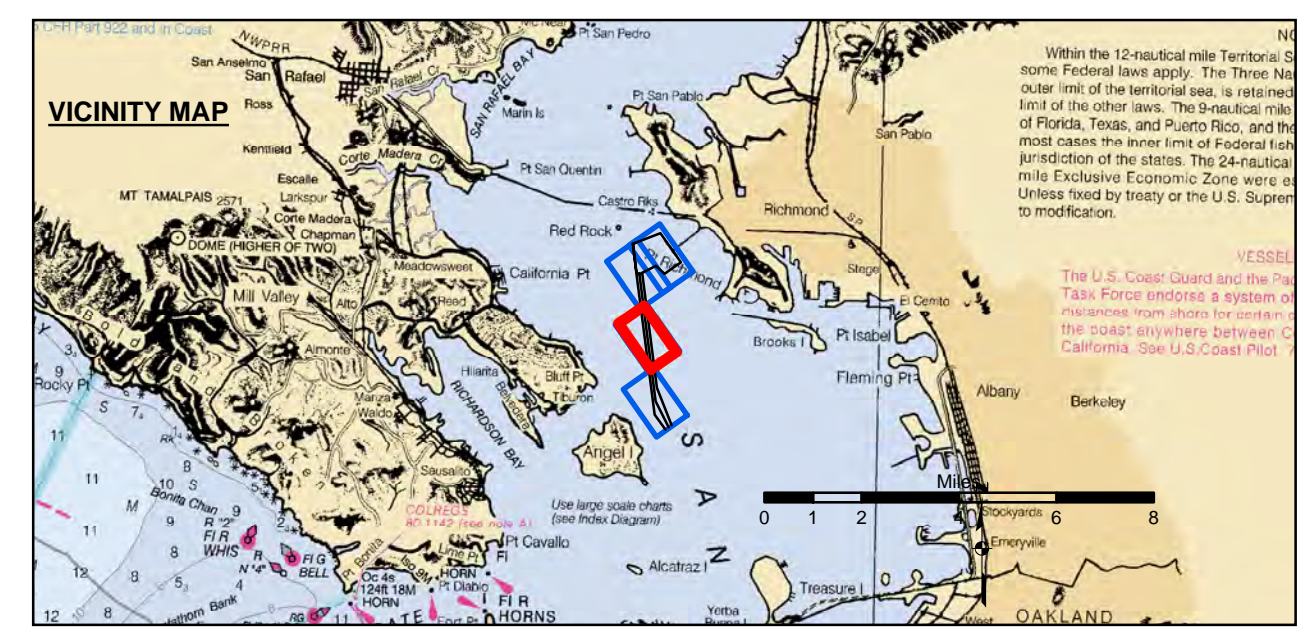


US Army Corps of Engineers
San Francisco District
1455 Market Street
San Francisco, CA 94103

DISCLAIMER
The United States Government furnishes this information for the purpose of providing advance information only. It is not intended to be used for navigation. The user is responsible for the results of any application of the data for other than its intended purpose. The United States Government makes no warranty, expressed or implied, concerning the accuracy, completeness, or timeliness of the information furnished. The United States Government assumes no liability whatsoever to any person by reason of any use made thereof. These data belong to the Government. Therefore, the recipient may not transfer these data to others without also transferring this disclaimer.

Chart Date:	Nov 21, 2018
Designed by:	PDT
Plotted by:	PDT
Checked by:	PDT
Drawn by:	PDT

ALAMEDA COUNTY
RICHMOND OUTER HARBOR
SOUTHAMPTON SHOALS
POST-DREDGE SURVEY
26 OCTOBER 2018



Federal Navigation Channel	Beacon, General	Contours
Shoaling Area	Obstruction Point	-45
Placement Area	Navigation Buoy	-44
Anchorage Area	Navigation Buoy	-43
Wreck Area	Shoalest Sounding*	-42
Submerged Wreck		-41
Angle Point		

NOTES:
HORIZONTAL COORDINATE SYSTEM:
NORTH AMERICAN DATUM OF 1983 (NAD83), PROJECTED TO THE STATE PLANE COORDINATE SYSTEM (SPCS), CALIFORNIA ZONE III. DISTANCE UNITS IN U.S. SURVEY FEET.

VERTICAL DATUM:
SOUNDINGS ARE SHOWN IN FEET AND INDICATE DEPTHS BELOW MEAN LOWER LOW WATER.

THE INFORMATION DEPICTED ON THIS MAP REPRESENTS THE RESULTS OF A SURVEY CONDUCTED ON THE DATE INDICATED AND CAN ONLY BE CONSIDERED TO REPRESENT THE GENERAL CONDITION EXISTING AT THAT TIME.

*SHOALEST SOUNDING PER QUARTER PER REACH
DRAWING NOT TO BE USED FOR NAVIGATION.
ONLY CHANNEL CONDITION AT DATE OF SURVEY.
THE LOCATION OF ALL NAVIGATION AIDS ARE BASED ON INFORMATION PROVIDED BY THE U.S. COAST GUARD. BUOY LOCATION REPRESENT THE POSITION OF THE SINKER ONLY.

SURVEYED BY THE CORPS OF ENGINEERS.

SOUNDINGS WERE TAKEN BY FATHOMETER AND ARE SHOWN TO THE NEAREST TENTH OF A FOOT.
SOUNDINGS ARE BASED ON THE DATUM OF MEAN LOWER LOW WATER AT THE LOCALITY.

BASE MAPS ARE USDA NAIP 2010.

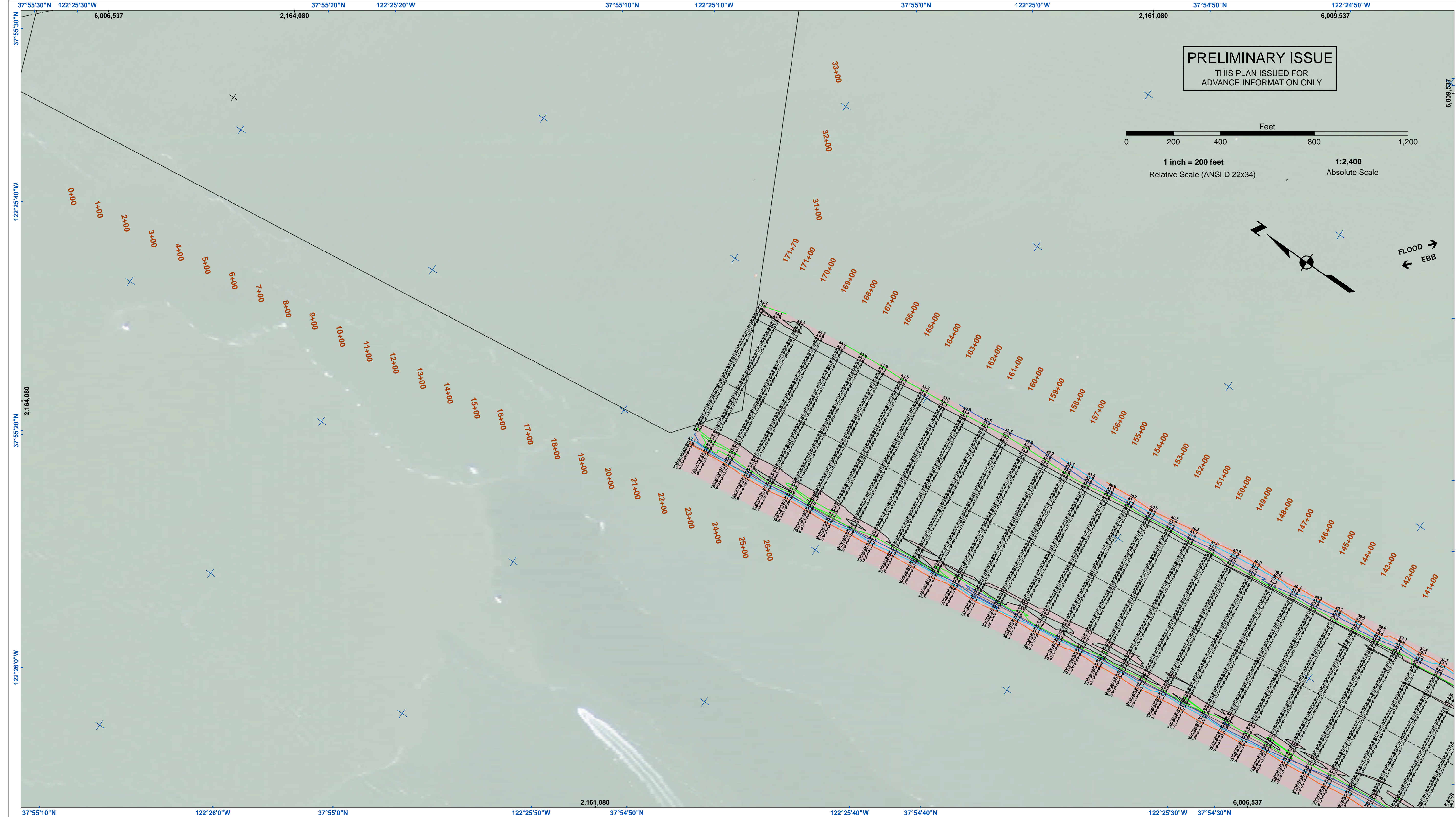
THE PROJECT DEPTHS ARE AS FOLLOWS:
SOUTHAMPTON SHOALS CHANNEL -45 FEET.
LONG WHARF MANEUVERING AREA -45 FEET.

1:00 INDICATED THE NUMBER AND BEGINNING OF A LINE OF SOUNDINGS.

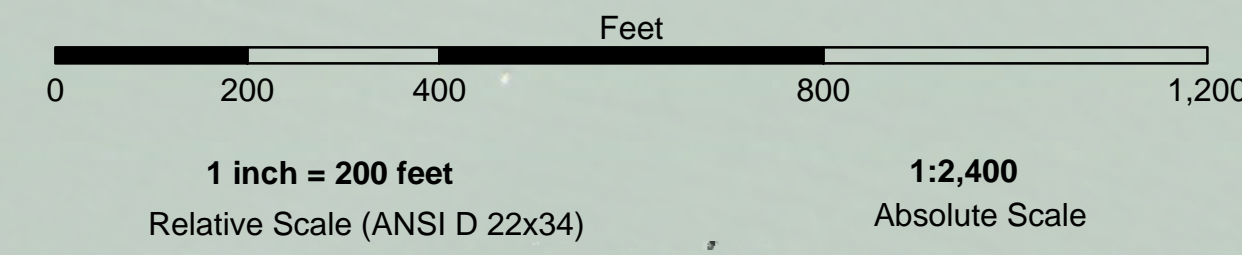
HORIZONTAL CONTROL:
HORIZONTAL POSITIONING: COAST GUARD DGPS
VERTICAL TIDES: INTERPOLATED FROM NOAA ONLINE TIDE STATIONS:
941 4863 - RICHMOND, CA
941 4290 - SAN FRANCISCO, CA

VERTICAL CONTROL:
(SOUTHAMPTON SHOALS & LONG WHARF MANEUVERING) BENCHMARK *10' 1937 ELEV 15.86 FT. MLLW.
AND BENCHMARK *11' 1946 ELEV 15.47 FT. MLLW.
TIDE GAUGE LOCATED AT TIBURON NET DEPOT.

Sheet
Reference
Number
2 of 4



PRELIMINARY ISSUE
THIS PLAN ISSUED FOR
ADVANCE INFORMATION ONLY



FLOOD →
← EBB

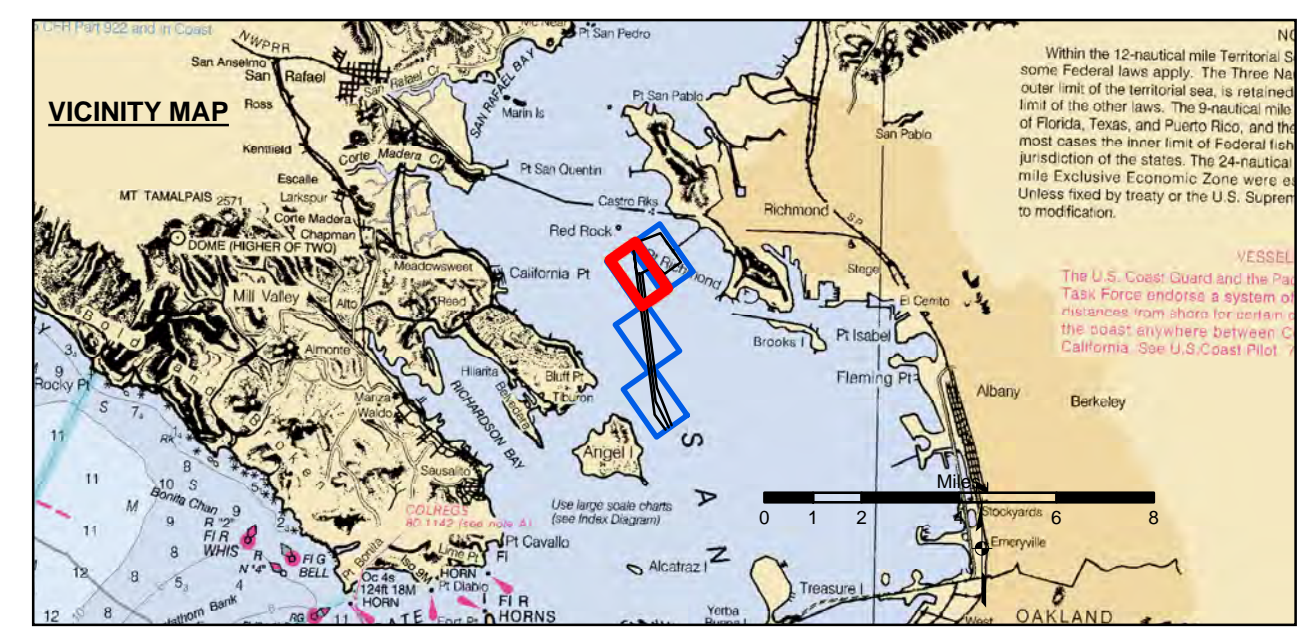
US Army Corps of Engineers
San Francisco District
1455 Market Street
San Francisco, CA 94103

DISCLAIMER
The United States Government furnishes the data represented on this map for informational purposes only. The data is not intended for navigation. The user is responsible for the results of any application of the data for other than its intended purpose. The United States Government makes no warranty, expressed or implied, concerning the accuracy, completeness, or timeliness of the data. The user is responsible for the results of any application of the data for other than its intended purpose. The United States Government makes no warranty, expressed or implied, concerning the accuracy, completeness, or timeliness of the data. The user is responsible for the results of any application of the data for other than its intended purpose.

Prepared Under the Direction of	JOHN C. MORROW	Chart Date	Nov 21, 2018
Surveyed By	LT COLONEL C.E. DISTRICT ENGINEER	Designed by	PDT
Plotted By	PDT	Checked By	PDT
Recommended by	Chief, Hydro Survey Section	Drawn by	PDT
Approved	Chief, Construction Branch		

ALAMEDA COUNTY
RICHMOND OUTER HARBOR
SOUTHAMPTON SHOALS
POST-DREDGE SURVEY
26 OCTOBER 2018

Sheet
Reference
Number
3 of 4



Federal Navigation Channel	Beacon, General	Contours
Shoaling Area	Obstruction Point	
Placement Area	Navigation Buoy	
Anchorage Area	Navigation Buoy	
Wreck Area	Shoalest Sounding*	
Submerged Wreck		-45
Angle Point		-44
		-43
		-42
		-41

NOTES:
HORIZONTAL COORDINATE SYSTEM:
NORTH AMERICAN DATUM OF 1983 (NAD83), PROJECTED TO THE STATE PLANE COORDINATE SYSTEM (SPCS), CALIFORNIA ZONE III. DISTANCE UNITS IN U.S. SURVEY FEET.

VERTICAL DATUM:
SOUNDINGS ARE SHOWN IN FEET AND INDICATE DEPTHS BELOW MEAN LOWER LOW WATER.

THE INFORMATION DEPICTED ON THIS MAP REPRESENTS THE RESULTS OF A SURVEY CONDUCTED ON THE DATE INDICATED AND CAN ONLY BE CONSIDERED TO REPRESENT THE GENERAL CONDITION EXISTING AT THAT TIME.

*SHOALEST SOUNDING PER QUARTER PER REACH DRAWING NOT TO BE USED FOR NAVIGATION. ONLY CHANNEL CONDITION AT DATE OF SURVEY.

THE LOCATION OF ALL NAVIGATION AIDS ARE BASED ON INFORMATION PROVIDED BY THE U.S. COAST GUARD. BUOY LOCATION REPRESENT THE POSITION OF THE SINKER ONLY.

SURVEYED BY THE CORPS OF ENGINEERS.

SOUNDINGS WERE TAKEN BY FATHOMETER AND ARE SHOWN TO THE NEAREST TENTH OF A FOOT. SOUNDINGS ARE BASED ON THE DATUM OF MEAN LOWER LOW WATER AT THE LOCALITY.

BASE MAPS ARE USDA NAIP 2010.

THE PROJECT DEPTHS ARE AS FOLLOWS:
SOUTHAMPTON SHOALS CHANNEL -45 FEET.
LONG WHARF MANEUVERING AREA -45 FEET.

1:00 INDICATED THE NUMBER AND BEGINNING OF A LINE OF SOUNDINGS.

HORIZONTAL CONTROL:
HORIZONTAL POSITIONING: COAST GUARD DGPS
VERTICAL TIDES: INTERPOLATED FROM NOAA ONLINE TIDE STATIONS:
941 4290 - RICHMOND, CA
941 4290 - SAN FRANCISCO, CA

VERTICAL CONTROL:
(SOUTHAMPTON SHOALS & LONG WHARF MANEUVERING) BENCHMARK "11" 1937 ELEV 15.86 FT. MLLW.
AND BENCHMARK "11" 1946 ELEV 15.47 FT. MLLW.
TIDE GAUGE LOCATED AT TIBURON NET DEPOT.