

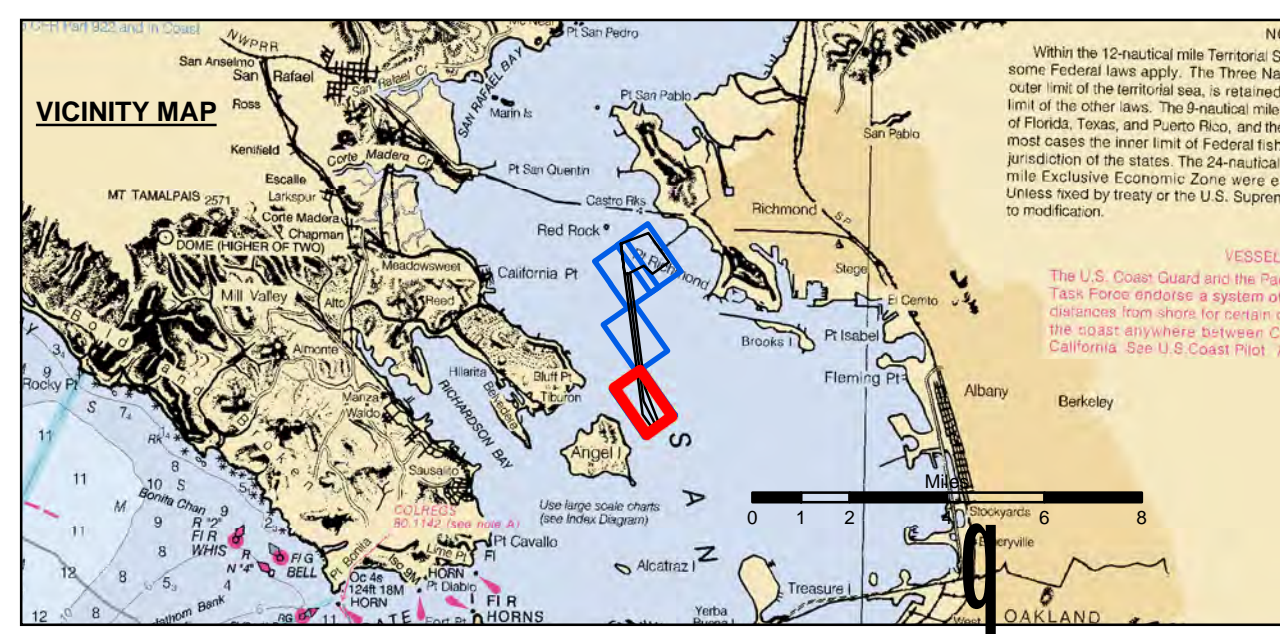
**US Army Corps of Engineers**  
 San Francisco District  
 1455 Market Street  
 San Francisco, CA 94103

**DISCLAIMER**  
 The United States Government furnishes this information as a service to the public and does not warrant, express or implied, the accuracy, completeness, or reliability of the data. The user is responsible for the results of any application of the data for other than its intended purpose. The user is responsible for the results of any application of the data for other than its intended purpose. The user is responsible for the results of any application of the data for other than its intended purpose.

Prepared Under the Direction of <b>JOHN C. MORROW</b> LT Colonel, C.E., District Engineer	Chart Date: Apr 11, 2017
Submitted: Hydro Survey Team Leader	Designed by: PDT
Recommended: Chief, Hydro Survey Section	Checked by: PDT
Approved: Chief, Construction Branch	Drawn by: PDT

CALIFORNIA  
 ALAMEDA COUNTY  
**RICHMOND OUTER HARBOR**  
 CONDITION SURVEY  
 10 APRIL 2017

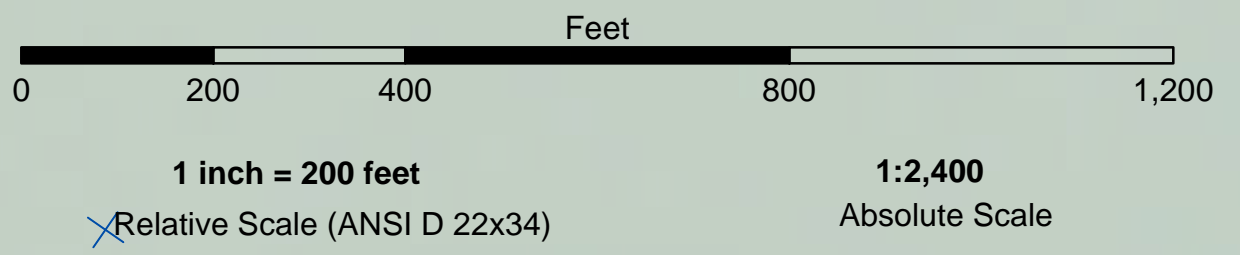
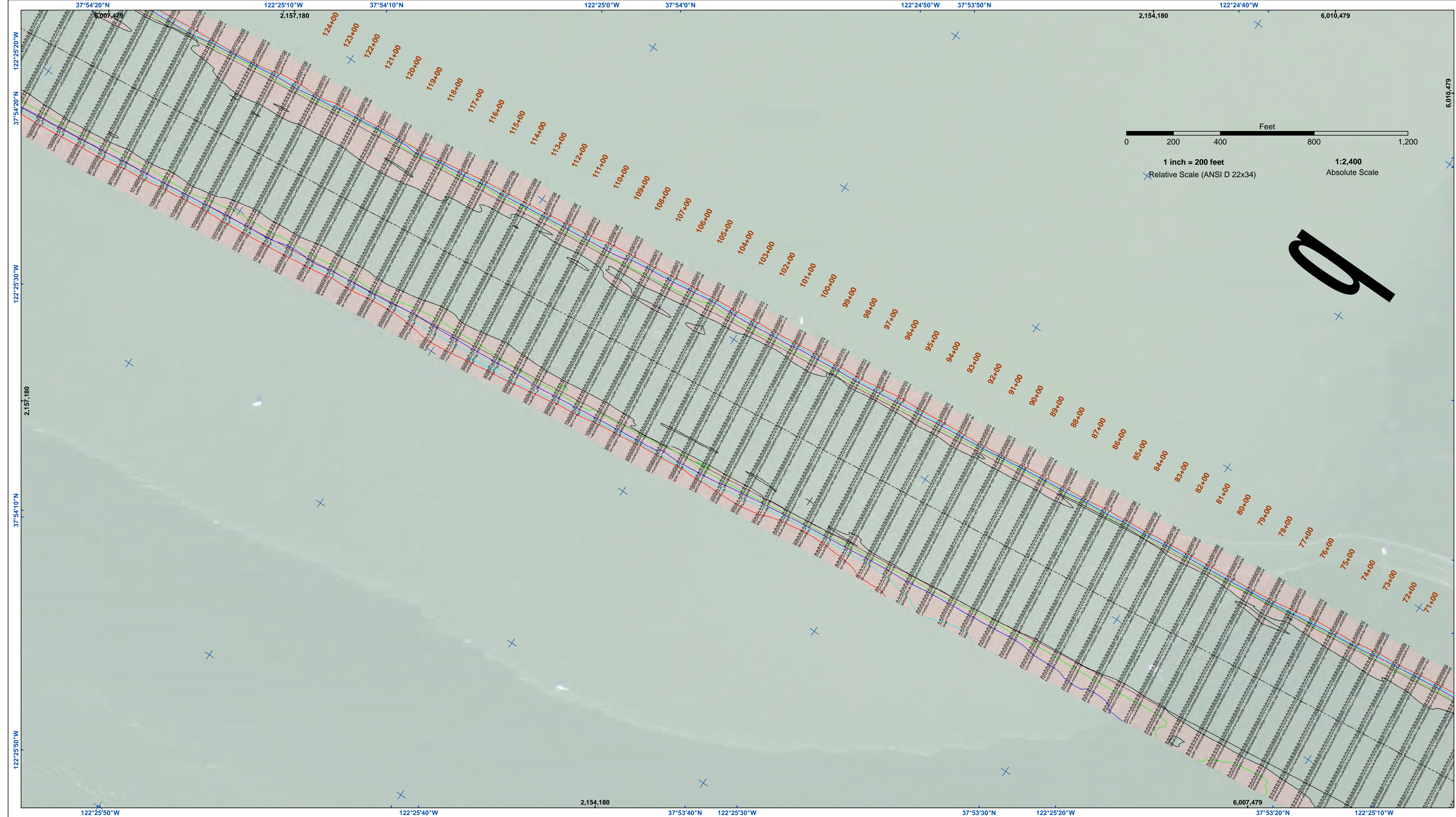
**Sheet Reference Number**  
 1 of 4



Federal Navigation Channel	Beacon, General	<b>Contours</b>
Shoaling Area	Obstruction Point	-45
Placement Area	Navigation Buoy	-44
Anchorage Area	Navigation Buoy	-43
Wreck Area	Shoalest Sounding*	-42
Submerged Wreck		-41
Angle Point		

**NOTES:**  
 HORIZONTAL COORDINATE SYSTEM: NORTH AMERICAN DATUM OF 1983 (NAD83), PROJECTED TO THE STATE PLANE COORDINATE SYSTEM (SPCS), CALIFORNIA ZONE III. DISTANCE UNITS IN U.S. SURVEY FEET.  
 VERTICAL DATUM: SOUNDINGS ARE SHOWN IN FEET AND INDICATE DEPTHS BELOW MEAN LOWER LOW WATER.  
 THE INFORMATION DEPICTED ON THIS MAP REPRESENTS THE RESULTS OF A SURVEY CONDUCTED ON THE DATE INDICATED AND CAN ONLY BE CONSIDERED TO REPRESENT THE GENERAL CONDITION EXISTING AT THAT TIME.  
 \*SHOALEST SOUNDING PER QUARTER PER REACH DRAWING NOT TO BE USED FOR NAVIGATION.  
 ONLY CHANNEL CONDITION AT DATE OF SURVEY.  
 THE LOCATION OF ALL NAVIGATION AIDS ARE BASED ON INFORMATION PROVIDED BY THE U.S. COAST GUARD. BUOY LOCATION REPRESENT THE POSITION OF THE SINKER ONLY.  
 SURVEYED BY THE CORPS OF ENGINEERS.

SOUNDINGS WERE TAKEN BY FATHOMETER AND ARE SHOWN TO THE NEAREST TENTH OF A FOOT. SOUNDINGS ARE BASED ON THE DATUM OF MEAN LOWER LOW WATER AT THE LOCALITY, NAVD 88. BASE MAPS ARE USDA NAIP 2010.  
 THE PROJECT DEPTHS ARE AS FOLLOWS:  
 SOUTHAMPTON SHOALS CHANNEL -45 FEET.  
 LONG WHARF MANEUVERING AREA -45 FEET.  
 1:00 INDICATED THE NUMBER AND BEGINNING OF A LINE OF SOUNDINGS.  
 HORIZONTAL CONTROL: COAST GUARD DGPS  
 VERTICAL TIDES: INTERPOLATED FROM NOAA ONLINE TIDE STATIONS: 941 4290 - RICHMOND, CA 941 4290 - SAN FRANCISCO, CA  
 VERTICAL CONTROL: (SOUTHAMPTON SHOALS & LONG WHARF MANEUVERING) BENCHMARK \*10\* 1937 ELEV 15.86 FT. MLLW. AND BENCHMARK \*11\* 1946 ELEV 15.47 FT. MLLW. TIDE GAUGE LOCATED AT TIBURON NET DEPOT.



9

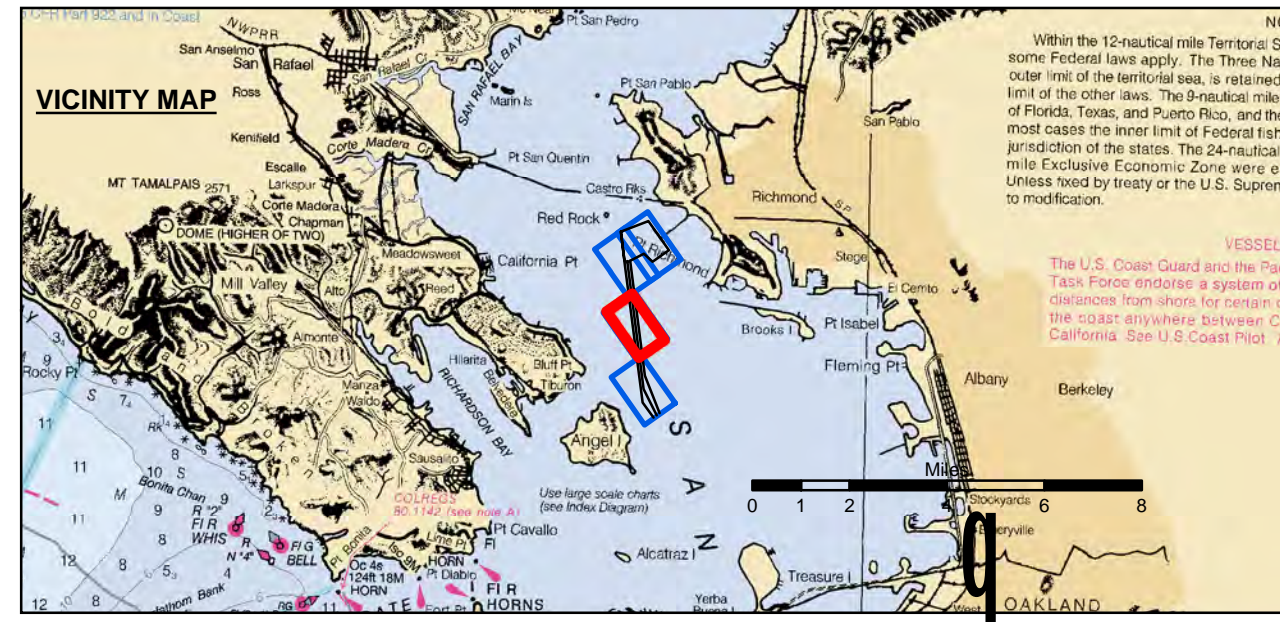
**US Army Corps of Engineers**  
 San Francisco District  
 1455 Market Street  
 San Francisco, CA 94103

**DISCLAIMER**  
 The United States Government furnishes this information as a service to the public and does not warrant, express or implied, the accuracy, completeness, or reliability of the data furnished. The user is responsible for the results of any application of the data for other than its intended purpose. The data are not to be used for navigation purposes. The recipient may not transfer these data to others without also transferring this Disclaimer.

Chart Date:	Apr 11, 2017
Designed by:	PDT
Plotted by:	PDT
Checked by:	PDT
Drawn by:	PDT

CALIFORNIA  
 ALAMEDA COUNTY  
**RICHMOND OUTER HARBOR**  
 CONDITION SURVEY  
 10 APRIL 2017

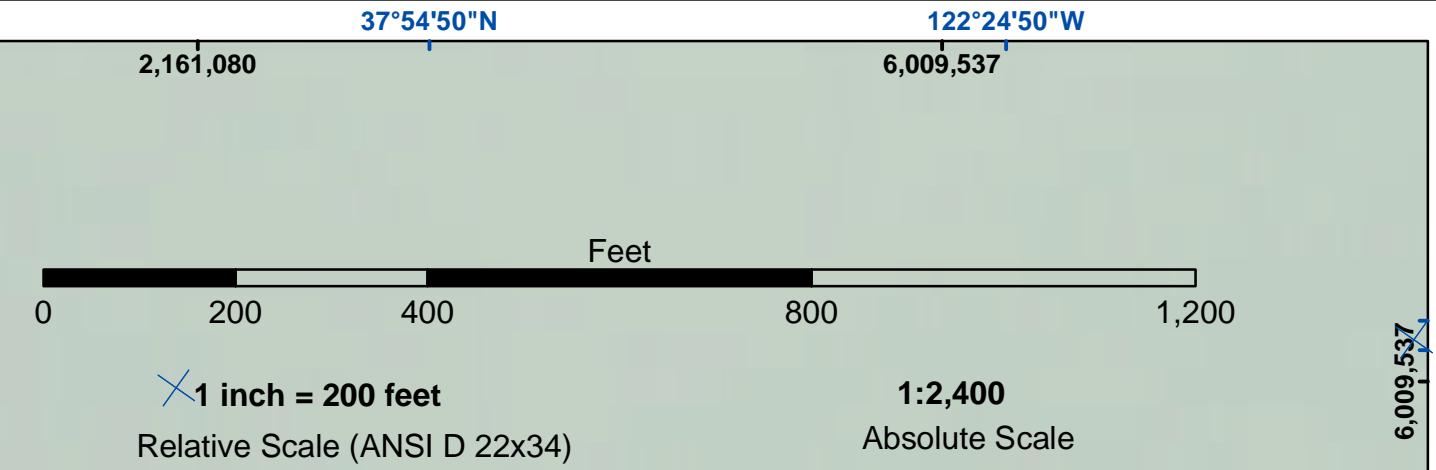
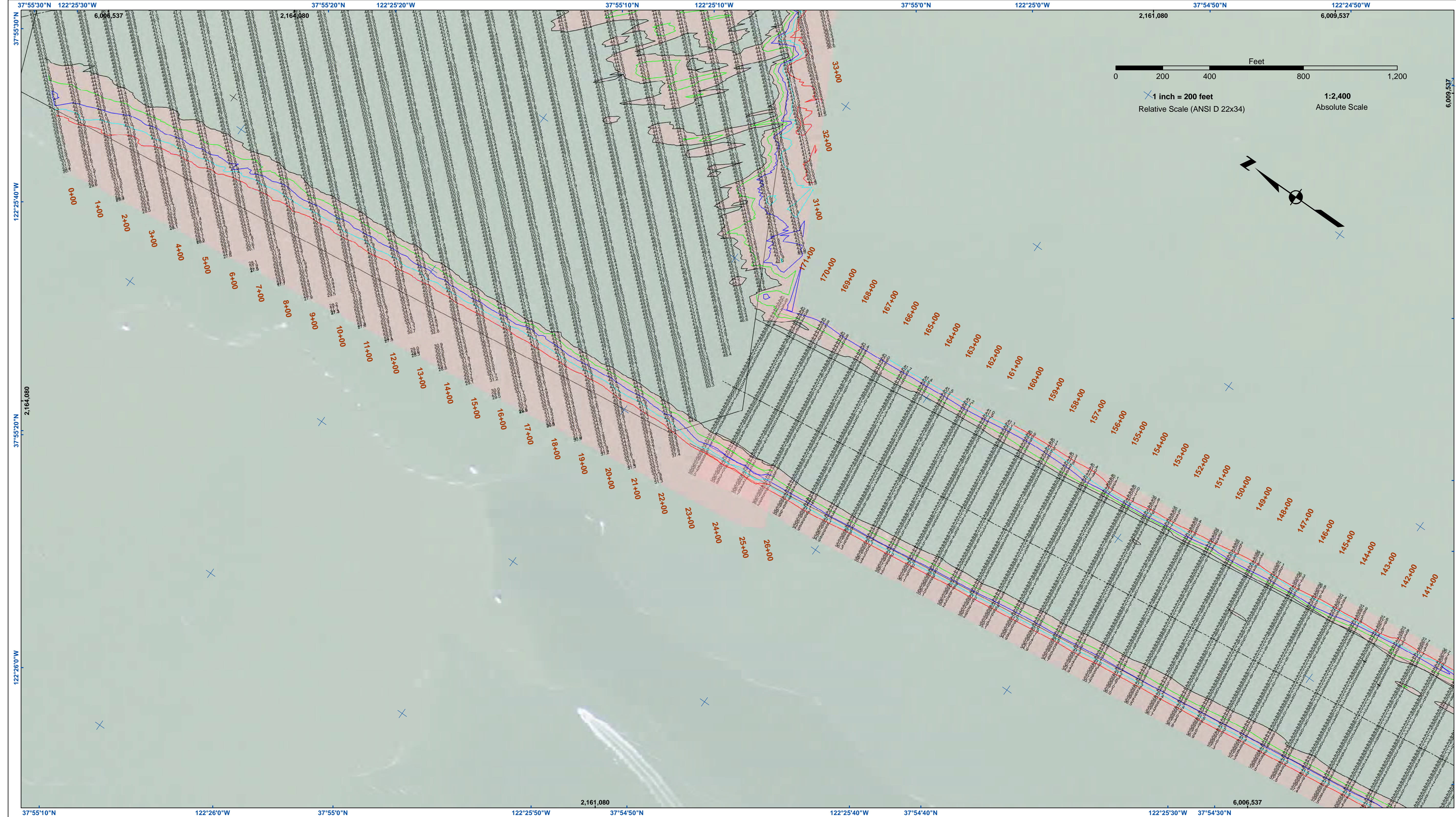
**Sheet**  
**Number**  
**2 of 4**



Federal Navigation Channel	Beacon, General	<b>Contours</b>
Shoaling Area	Obstruction Point	-45
Placement Area	Navigation Buoy	-44
Anchorage Area	Navigation Buoy	-43
Wreck Area	Shoalest Sounding*	-42
Submerged Wreck		-41
Angle Point		

**NOTES:**  
 HORIZONTAL COORDINATE SYSTEM:  
 NORTH AMERICAN DATUM OF 1983 (NAD83), PROJECTED TO THE STATE PLANE COORDINATE SYSTEM (SPCS), CALIFORNIA ZONE III. DISTANCE UNITS IN U.S. SURVEY FEET.  
 VERTICAL DATUM:  
 SOUNDINGS ARE SHOWN IN FEET AND INDICATE DEPTHS BELOW MEAN LOWER LOW WATER.  
 THE INFORMATION DEPICTED ON THIS MAP REPRESENTS THE RESULTS OF A SURVEY CONDUCTED ON THE DATE INDICATED AND CAN ONLY BE CONSIDERED TO REPRESENT THE GENERAL CONDITION EXISTING AT THAT TIME.  
 \*SHOALEST SOUNDING PER QUARTER PER REACH DRAWING NOT TO BE USED FOR NAVIGATION.  
 ONLY CHANNEL CONDITION AT DATE OF SURVEY.  
 THE LOCATION OF ALL NAVIGATION AIDS ARE BASED ON INFORMATION PROVIDED BY THE U.S. COAST GUARD. BUOY LOCATION REPRESENT THE POSITION OF THE SINKER ONLY.  
 SURVEYED BY THE CORPS OF ENGINEERS.

SOUNDINGS WERE TAKEN BY FATHOMETER AND ARE SHOWN TO THE NEAREST TENTH OF A FOOT. SOUNDINGS ARE BASED ON THE DATUM OF MEAN LOWER LOW WATER AT THE LOCALITY, NAVD 88. BASE MAPS ARE USDA NAIP 2010.  
 THE PROJECT DEPTHS ARE AS FOLLOWS:  
 SOUTHAMPTON SHOALS CHANNEL -45 FEET.  
 LONG WHARF MANEUVERING AREA -45 FEET.  
 1:00 INDICATED THE NUMBER AND BEGINNING OF A LINE OF SOUNDINGS.  
 HORIZONTAL CONTROL:  
 HORIZONTAL POSITIONING: COAST GUARD DGPS  
 VERTICAL TIDES: INTERPOLATED FROM NOAA ONLINE TIDE STATIONS:  
 941 4863 - RICHMOND, CA  
 941 4290 - SAN FRANCISCO, CA  
 VERTICAL CONTROL:  
 (SOUTHAMPTON SHOALS & LONG WHARF MANEUVERING) BENCHMARK '10' 1937 ELEV 15.86 FT. MLLW.  
 AND BENCHMARK '11' 1946 ELEV 15.47 FT. MLLW.  
 TIDE GAUGE LOCATED AT TIBURON NET DEPOT.

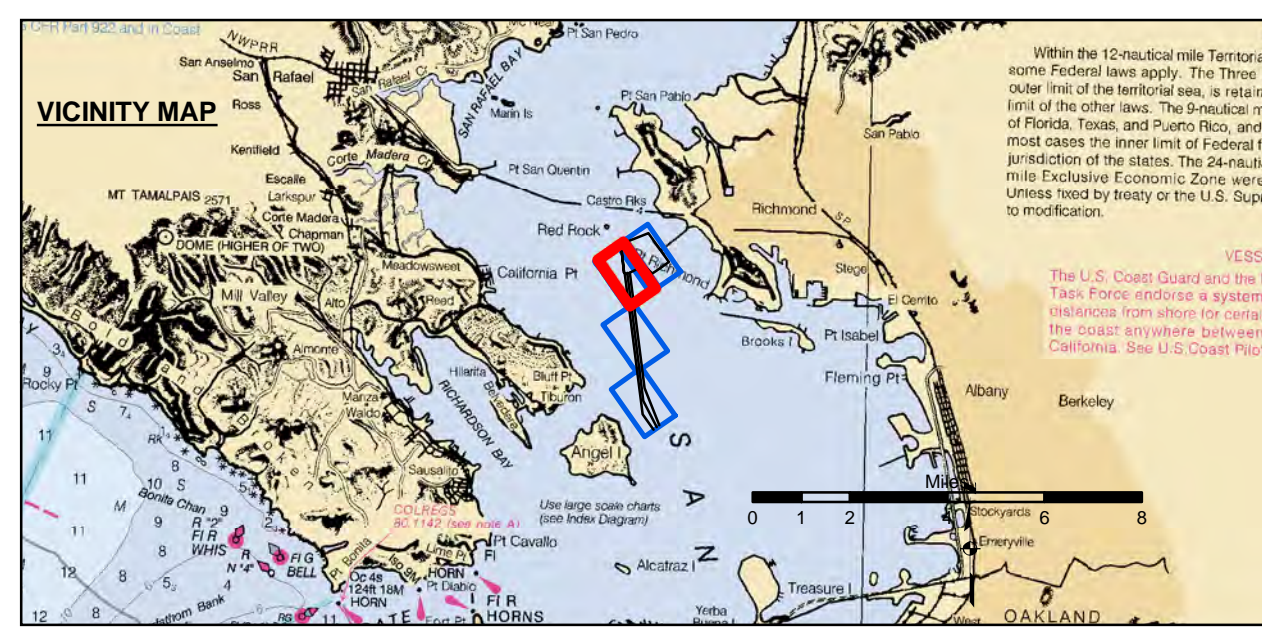


**US Army Corps of Engineers**  
 San Francisco District  
 1455 Market Street  
 San Francisco, CA 94103

**DISCLAIMER**  
 The United States Government furnishes this information as a service to the public and does not warrant, express or implied, the accuracy, completeness, or reliability of the information. The user is responsible for the results of any application of the data for other than its intended purpose. These data belong to the Government. Therefore the recipient may not transfer these data to others without also transferring this disclaimer.

Chart Date:	Apr 13, 2017
Designed by:	PDT
Plotted by:	PDT
Checked by:	PDT
Drawn by:	PDT

ALAMEDA COUNTY  
 CALIFORNIA  
**RICHMOND OUTER HARBOR  
 CONDITION SURVEY  
 4 & 10 APRIL 2017**



Federal Navigation Channel	Beacon, General	<b>Contours</b>
Shoaling Area	Obstruction Point	-45
Placement Area	Navigation Buoy	-44
Anchorage Area	Navigation Buoy	-43
Wreck Area	Shoalest Sounding*	-42
Submerged Wreck		-41
Angle Point		

**NOTES:**  
 HORIZONTAL COORDINATE SYSTEM:  
 NORTH AMERICAN DATUM OF 1983 (NAD83), PROJECTED TO THE STATE PLANE COORDINATE SYSTEM (SPCS), CALIFORNIA ZONE III. DISTANCE UNITS IN U.S. SURVEY FEET.  
 VERTICAL DATUM:  
 SOUNDINGS ARE SHOWN IN FEET AND INDICATE DEPTHS BELOW MEAN LOWER LOW WATER.  
 THE INFORMATION DEPICTED ON THIS MAP REPRESENTS THE RESULTS OF A SURVEY CONDUCTED ON THE DATE INDICATED AND CAN ONLY BE CONSIDERED TO REPRESENT THE GENERAL CONDITION EXISTING AT THAT TIME.  
 \*SHOALEST SOUNDING PER QUARTER PER REACH DRAWING NOT TO BE USED FOR NAVIGATION.  
 ONLY CHANNEL CONDITION AT DATE OF SURVEY.  
 THE LOCATION OF ALL NAVIGATION AIDS ARE BASED ON INFORMATION PROVIDED BY THE U.S. COAST GUARD. BUOY LOCATION REPRESENT THE POSITION OF THE SINKER ONLY.  
 SURVEYED BY THE CORPS OF ENGINEERS.

SOUNDINGS WERE TAKEN BY FATHOMETER AND ARE SHOWN TO THE NEAREST TENTH OF A FOOT.  
 SOUNDINGS ARE BASED ON THE DATUM OF MEAN LOWER LOW WATER AT THE LOCALITY, NAVD 88.  
 BASE MAPS ARE USDA NAIP 2010.  
 THE PROJECT DEPTHS ARE AS FOLLOWS:  
 SOUTHAMPTON SHOALS CHANNEL -45 FEET.  
 LONG WHARF MANEUVERING AREA -45 FEET.  
 1:00 INDICATED THE NUMBER AND BEGINNING OF A LINE OF SOUNDINGS.  
 HORIZONTAL POSITIONING: COAST GUARD DGPS  
 VERTICAL TIDES: INTERPOLATED FROM NOAA ONLINE TIDE STATIONS:  
 941 4293 - RICHMOND, CA  
 941 4290 - SAN FRANCISCO, CA  
 VERTICAL CONTROL:  
 (SOUTHAMPTON SHOALS & LONG WHARF MANEUVERING) BENCHMARK \*11 1937 ELEV 15.86 FT. MLLW.  
 AND BENCHMARK \*11 1946 ELEV 15.47 FT. MLLW.  
 TIDE GAUGE LOCATED AT TIBURON NET DEPOT.

**Sheet  
 Reference  
 Number  
 3 of 4**