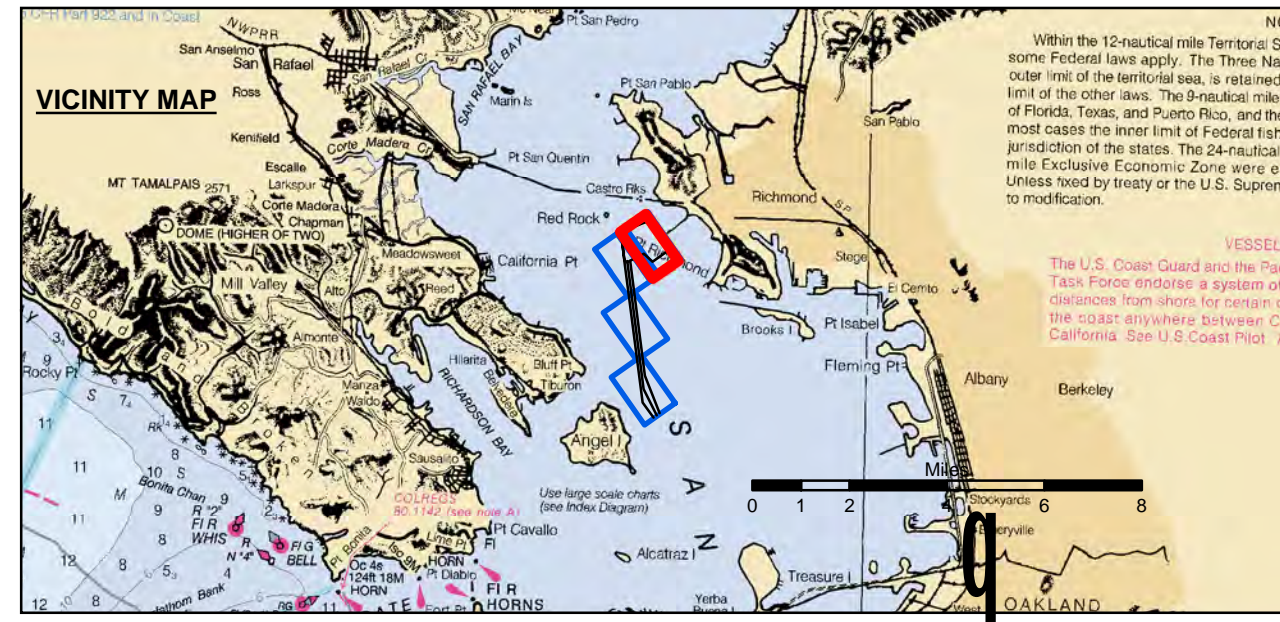


9



Federal Navigation Channel	Beacon, General	Contours
Shoaling Area	Obstruction Point	-45
Placement Area	Navigation Buoy	-44
Anchorage Area	Navigation Buoy	-43
Wreck Area	Shoalest Sounding*	-42
Submerged Wreck		-41
Angle Point		

NOTES:
 HORIZONTAL COORDINATE SYSTEM:
 NORTH AMERICAN DATUM OF 1983 (NAD83), PROJECTED TO THE STATE PLANE COORDINATE SYSTEM (SPCS), CALIFORNIA ZONE III. DISTANCE UNITS IN U.S. SURVEY FEET.
 VERTICAL DATUM:
 SOUNDINGS ARE SHOWN IN FEET AND INDICATE DEPTHS BELOW MEAN LOWER LOW WATER.
 DRAWING NOT TO BE USED FOR NAVIGATION.
 ONLY CHANNEL CONDITION AT DATE OF SURVEY.
 THE LOCATION OF ALL NAVIGATION AIDS ARE BASED ON INFORMATION PROVIDED BY THE U.S. COAST GUARD. BUOY LOCATION REPRESENT THE POSITION OF THE SINKER ONLY.
 SURVEYED BY THE CORPS OF ENGINEERS.

SOUNDINGS WERE TAKEN BY FATHOMETER AND ARE SHOWN TO THE NEAREST TENTH OF A FOOT.
 SOUNDINGS ARE BASED ON THE DATUM OF MEAN LOWER LOW WATER AT THE LOCALITY, NAVD 88.
 BASE MAPS ARE USDA NAIP 2010.
 THE PROJECT DEPTHS ARE AS FOLLOWS:
 SOUTHAMPTON SHOALS CHANNEL -45 FEET.
 LONG WHARF MANEUVERING AREA -45 FEET.
 1:00 INDICATED THE NUMBER AND BEGINNING OF A LINE OF SOUNDINGS.
 HORIZONTAL CONTROL:
 HORIZONTAL POSITIONING: COAST GUARD DGPS
 VERTICAL TIDES: INTERPOLATED FROM NOAA ONLINE TIDE STATIONS:
 941 8863 - RICHMOND, CA
 941 4290 - SAN FRANCISCO, CA
 VERTICAL CONTROL:
 (SOUTHAMPTON SHOALS & LONG WHARF MANEUVERING) BENCHMARK "10" 1937 ELEV 15.86 FT. MLLW.
 AND BENCHMARK "11" 1946 ELEV 15.47 FT. MLLW.
 TIDE GAUGE LOCATED AT TIBURON NET DEPOT.

US Army Corps of Engineers
 San Francisco District
 1455 Market Street
 San Francisco, CA 94103

DISCLAIMER
 The United States Government furnishes this information as a service to the public. It is not intended to be used for any purpose other than that for which it was prepared. The user is responsible for the results of any application of the data for other than its intended purpose. The user is responsible for the results of any application of the data for other than its intended purpose. The user is responsible for the results of any application of the data for other than its intended purpose. The user is responsible for the results of any application of the data for other than its intended purpose.

Prepared Under the Direction of JOHN C. MORROW LT Colonel, C.E., District Engineer	Chart Date: Apr 10, 2017
Submitted by: Hydro Survey Team Leader	Designed by: PDT
Recommended by: Chief, Hydro Survey Section	Drawn by: PDT
Approved by: Chief, Construction Branch	

CALIFORNIA
RICHMOND OUTER HARBOR
CONDITION SURVEY
 04 APRIL 2017

Sheet
Number
4 of 4