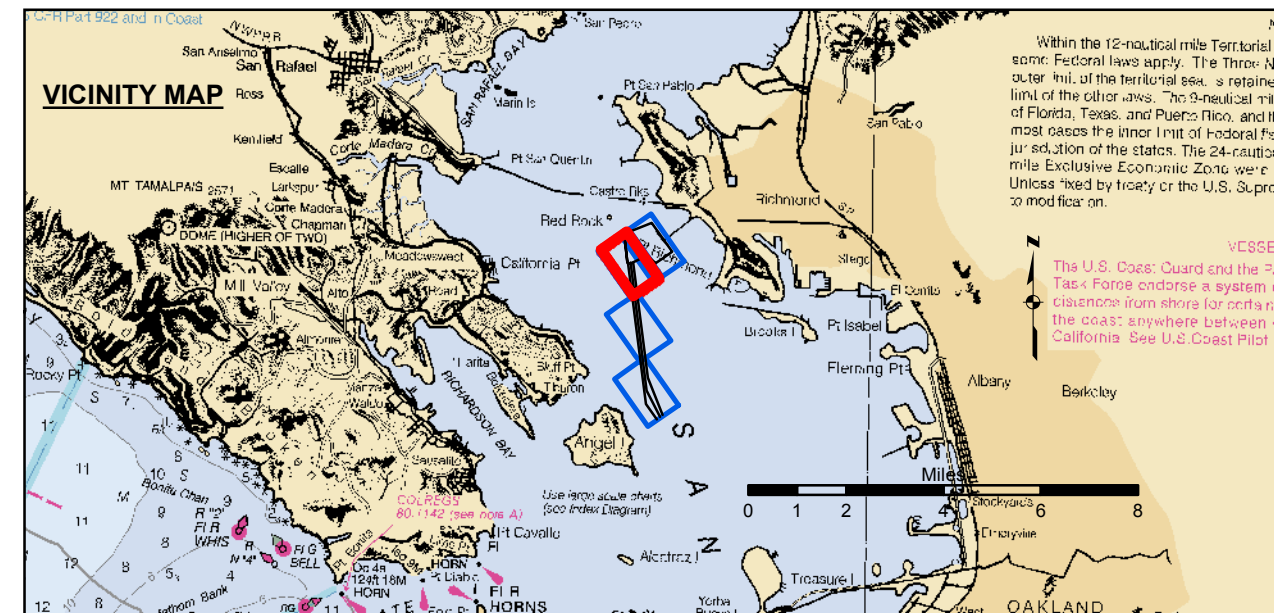


US Army Corps of Engineers
 San Francisco District
 1455 Market Street
 San Francisco, CA 94103

DISCLAIMER
 The United States Government furnishes this information for the general information of the public. It is not to be used for any purpose other than that intended by the Government. The United States Government makes no warranty, expressed or implied, concerning the accuracy, completeness, or reliability of the information. The user is responsible for the results of any application of the data for other than the intended purpose.
 Distribution Liability: The data represents the results of data collected by the United States Government. Engineers activity and indicates the general existing conditions. As such, it is only valid for its intended use, content, time and accuracy specifications. The user is responsible for the results of any application of the data for other than the intended purpose.

Chart Date:	Jul 09, 2014
Surveyed By:	JOHN C. MORROW
Plotted By:	PDT
Designed By:	PDT
Checked By:	PDT
Drawn By:	PDT

ALAMEDA COUNTY
RICHMOND OUTER HARBOR
LONG WHARF
PREDRIDGE SURVEY
 26-27 JUNE 2014



- | | | |
|----------------------------|--------------------|-----------------|
| Federal Navigation Channel | Beacon, General | Contours |
| Shoaling Area | Obstruction Point | -45 |
| Placement Area | Navigation Buoy | -44 |
| Anchorage Area | Navigation Buoy | -43 |
| Wreck Area | Navigation Buoy | -42 |
| Submerged Wreck | Shoalest Sounding* | -41 |
| Angle Point | | |

NOTES:
 HORIZONTAL COORDINATE SYSTEM:
 NORTH AMERICAN DATUM OF 1983 (NAD83), PROJECTED TO THE STATE PLANE COORDINATE SYSTEM (SPCS), CALIFORNIA ZONE III. DISTANCE UNITS IN U.S. SURVEY FEET.
 VERTICAL DATUM:
 SOUNDINGS ARE SHOWN IN FEET AND INDICATE DEPTHS BELOW MEAN LOWER LOW WATER.
 THE INFORMATION DEPICTED ON THIS MAP REPRESENTS THE RESULTS OF A SURVEY CONDUCTED ON THE DATE INDICATED AND CAN ONLY BE CONSIDERED TO REPRESENT THE GENERAL CONDITION EXISTING AT THAT TIME.
 SHOALEST SOUNDING PER QUARTER PER REACH
 DRAWING NOT TO BE USED FOR NAVIGATION.
 ONLY CHANNEL CONDITION AT DATE OF SURVEY. THE LOCATION OF ALL NAVIGATION AIDS ARE BASED ON INFORMATION PROVIDED BY THE U.S. COAST GUARD. BUOY LOCATION REPRESENT THE POSITION OF THE SINKER ONLY.
 SURVEYED BY THE CORPS OF ENGINEERS.
 SOUNDINGS WERE TAKEN BY FATHOMETER AND ARE SHOWN TO THE NEAREST TENTH OF A FOOT.

SOUNDINGS ARE BASED ON THE DATUM OF MEAN LOWER LOW WATER AT THE LOCALITY.
 BASE MAPS ARE USDA NAIP 2010.
 THE PROJECT DEPTHS ARE AS FOLLOWS:
 SOUTHAMPTON SHOALS CHANNEL - 45 FEET.
 LONG WHARF MANEUVERING AREA - 45 FEET.
 VERTICAL CONTROL
 (SOUTHAMPTON SHOALS & LONG WHARF MANEUVERING) BENCHMARK "10" 1937 ELEV 15.86 FT. MLLW.
 AND BENCHMARK "11" 1940 ELEV 15.47 FT. MLLW.
 TIDE GAUGE LOCATED AT TIBURON NET DEPOT.
 CONTROL:
 HORIZONTAL POSITIONING: COAST GUARD DGPS
 VERTICAL TIDES: INTERPOLATED FROM NOAA ONLINE TIDE STATIONS:
 941483 - RICHMOND, CA
 941429 - SAN FRANCISCO, CA

PRELIMINARY ISSUE
 THIS PLAN ISSUED FOR
 ADVANCE INFORMATION ONLY

Sheet
Reference
Number
3 of 4