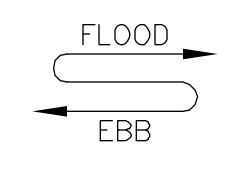
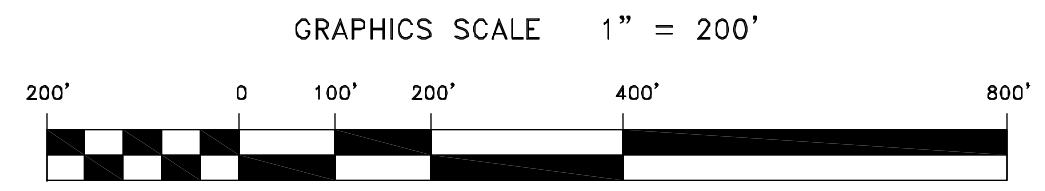
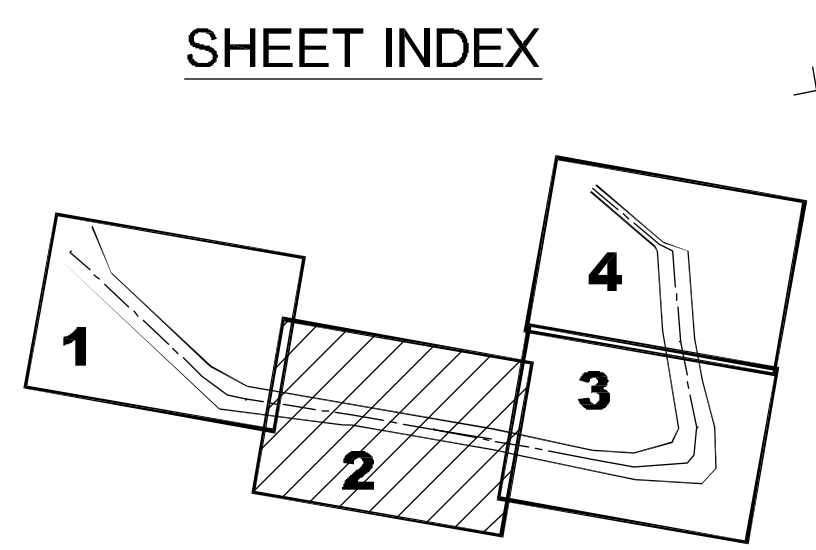


**PRELIMINARY ISSUE**  
THIS PLAN ISSUED FOR  
ADVANCE INFORMATION ONLY

**LEGEND:**

Red line	-38'
Blue line	-37'
Green line	-36'
Cyan line	-35'
Black line	-34'



US Army Corps  
of Engineers  
San Francisco District  
455 Market Street  
San Francisco, CA 94103

Mark	Description	Date	Appr.

DESIGNED BY:	PDT	DATE:	2/24/2014	SHEET NO.:	2 OF 4	DRAWING NO.:	9 2	
CHECKED BY:	PDT	APPROVAL RECOMMENDED:	PREPARED UNDER THE DIRECTION OF				JOHN K. BAKER	
DESIGNED BY:	PDT	APPROVED:	LT. COLONEL, C.E., DISTRICT ENGINEER					

ALAMEDA COUNTY  
CALIFORNIA  
**RICHMOND INNER HARBOR**  
CONDITION SURVEY  
18-19 FEBRUARY 2014

Sheet reference  
number  
**C2**