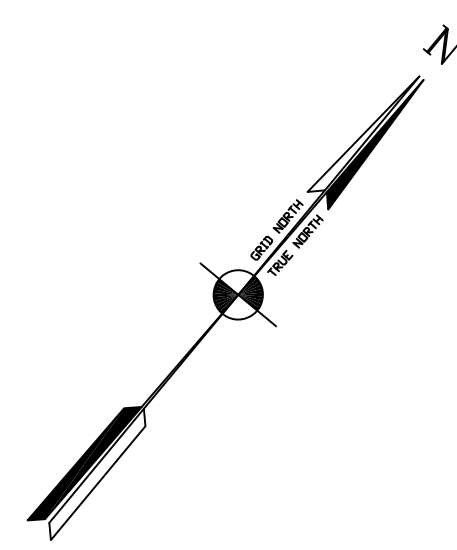


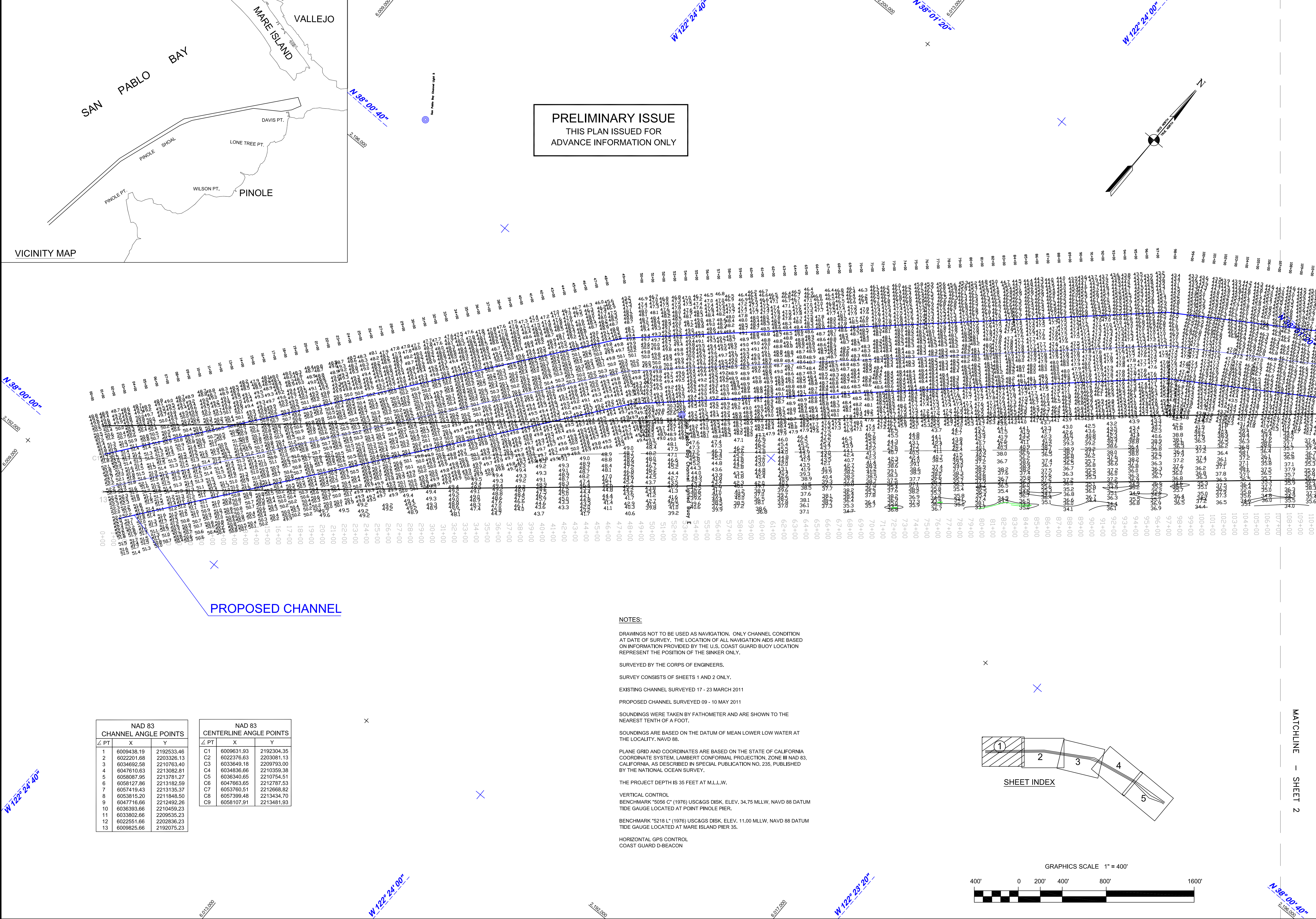
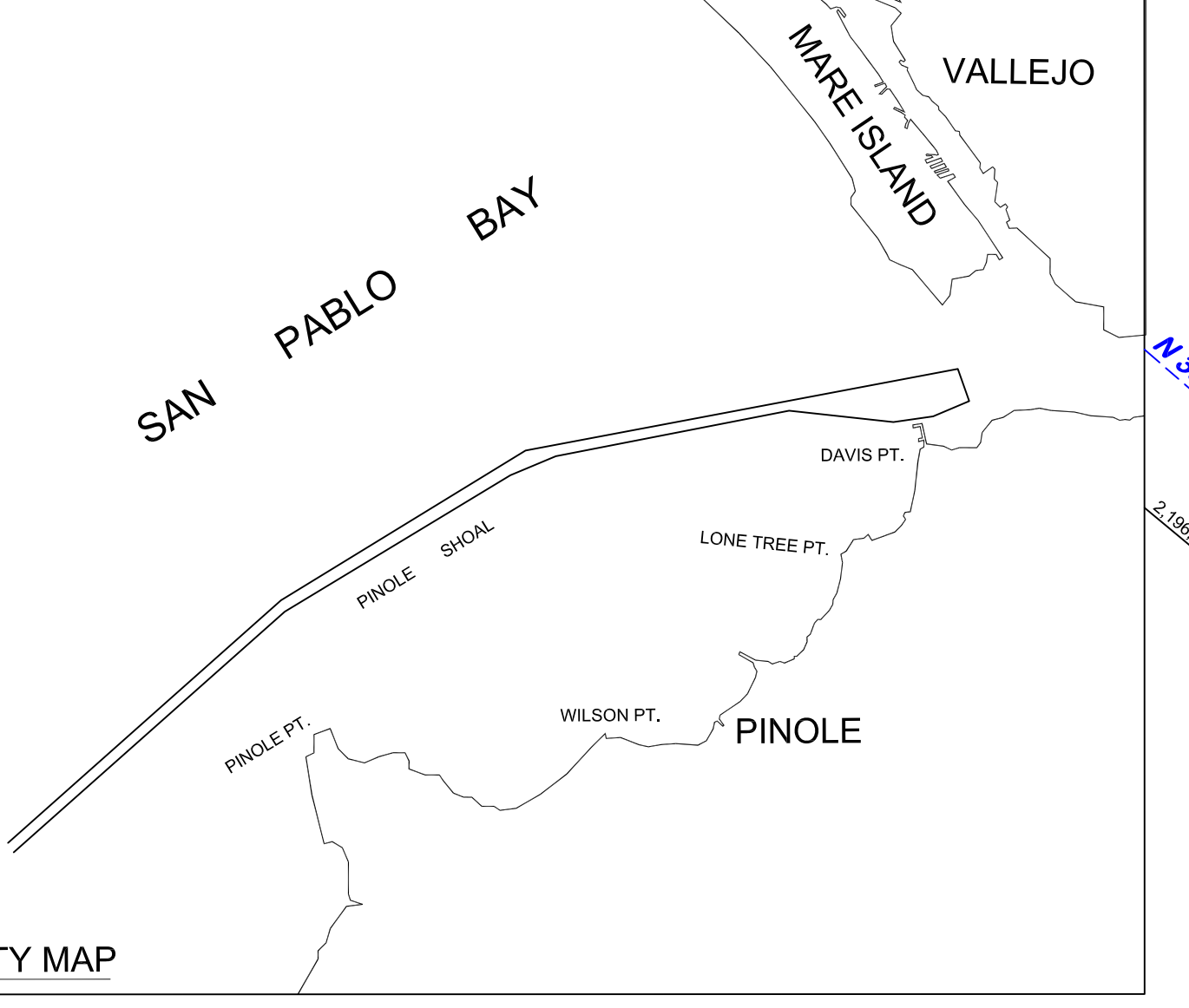
Mark	Description	Date	Appr.

DESIGNED BY: PDT Hydro Survey Team Leader	CHECKED BY: PDT DRAWING NO.	DATE: 05/10/2011			PREPARED UNDER THE DIRECTION OF TORREY A. DICIRO LT. COLONEL, C.E., DISTRICT ENGINEER
		SHEET NO. 3	OF 5	2	
SUBMITTED:		APPROVAL RECOMMENDED:		APPROVED:	

**PRELIMINARY ISSUE**  
THIS PLAN ISSUED FOR  
ADVANCE INFORMATION ONLY



VICINITY MAP



**NAD 83 CHANNEL ANGLE POINTS**

∠ PT	X	Y
1	6009438.19	2192533.46
2	6022201.68	2203326.13
3	6034692.58	2210763.40
4	6047610.63	2213082.81
5	6058087.95	2213781.27
6	6058127.88	2213182.59
7	6057419.43	2213135.37
8	6053815.20	2211848.50
9	6047716.66	2212492.26
10	6036393.66	2210459.23
11	6033802.66	2209535.23
12	6022551.66	2202836.23
13	6008825.66	2192075.23

**NAD 83 CENTERLINE ANGLE POINTS**

∠ PT	X	Y
C1	6009631.93	2192304.35
C2	6022376.63	2203081.13
C3	6034649.18	2209793.00
C4	6034836.66	2210359.38
C5	6036340.65	2210754.51
C6	6047663.65	2212787.53
C7	6053760.51	2212668.82
C8	6057399.48	2213434.70
C9	6058107.91	2213481.93

**NOTES:**  
DRAWINGS NOT TO BE USED AS NAVIGATION. ONLY CHANNEL CONDITION AT DATE OF SURVEY. THE LOCATION OF ALL NAVIGATION AIDS ARE BASED ON INFORMATION PROVIDED BY THE U.S. COAST GUARD BUOY LOCATION REPRESENT THE POSITION OF THE SINKER ONLY.  
SURVEYED BY THE CORPS OF ENGINEERS.  
SURVEY CONSISTS OF SHEETS 1 AND 2 ONLY.  
EXISTING CHANNEL SURVEYED 17 - 23 MARCH 2011  
PROPOSED CHANNEL SURVEYED 09 - 10 MAY 2011  
SOUNDINGS WERE TAKEN BY FATHOMETER AND ARE SHOWN TO THE NEAREST TENTH OF A FOOT.  
SOUNDINGS ARE BASED ON THE DATUM OF MEAN LOWER LOW WATER AT THE LOCALITY. NAVD 88.  
PLANE GRID AND COORDINATES ARE BASED ON THE STATE OF CALIFORNIA COORDINATE SYSTEM, LAMBERT CONFORMAL PROJECTION, ZONE III NAD 83, CALIFORNIA, AS DESCRIBED IN SPECIAL PUBLICATION NO. 235, PUBLISHED BY THE NATIONAL OCEAN SURVEY.  
THE PROJECT DEPTH IS 35 FEET AT M.L.L.W.  
VERTICAL CONTROL  
BENCHMARK "5056 C" (1976) USC&GS DISK, ELEV. 34.75 MLLW, NAVD 88 DATUM TIDE GAUGE LOCATED AT PINOLE PIER.  
BENCHMARK "5218 L" (1976) USC&GS DISK, ELEV. 11.00 MLLW, NAVD 88 DATUM TIDE GAUGE LOCATED AT MARE ISLAND PIER 3S.  
HORIZONTAL GPS CONTROL  
COAST GUARD D-BEACON

