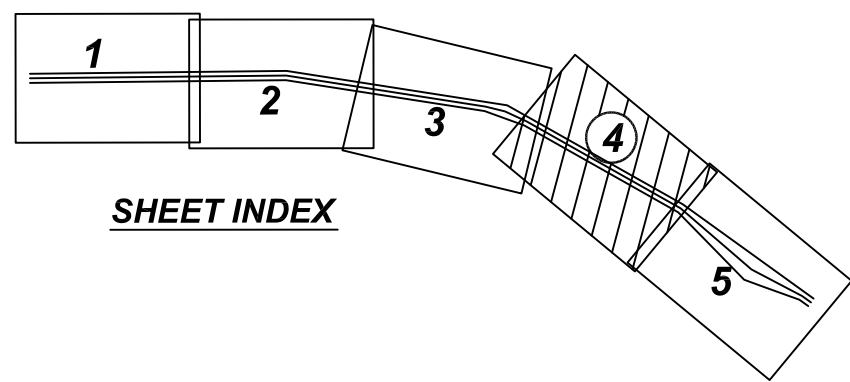
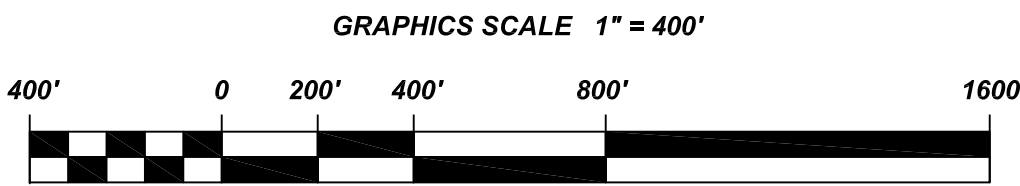
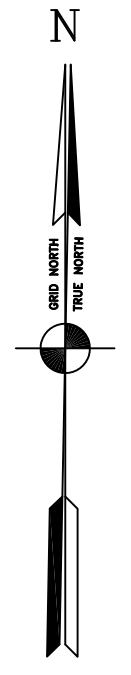


PRELIMINARY ISSUE
THIS PLAN ISSUED FOR
ADVANCE INFORMATION ONLY



Mark	Date	Appr.

SUBMITTED:	PDT	DRAWN BY:	PDT	CHECKED BY:	PDT
	Hydro Survey Team Leader		PDT		Hydro Survey Team Leader
	APPROVAL RECOMMENDED:		DRAWING NO.		DRAWING NO.
DATE:	1/31/2014	SHEET NO.	3 OF 5	DATE:	1/31/2014
APPROVED:	John K. Baker	PREPARED UNDER THE DIRECTION OF	JOHN K. BAKER	APPROVED:	LT. COLONEL C.E., DISTRICT ENGINEER
		Chief, Hydro Survey Section			
		Chief, Construction Branch			

CALIFORNIA
SAN PABLO BAY
PINOLE SHOALS
CONDITION SURVEY
24-29 JANUARY 2014

Sheet reference
number
C4



US Army Corps
of Engineers
San Francisco District
1455 Market Street
San Francisco, CA 94103