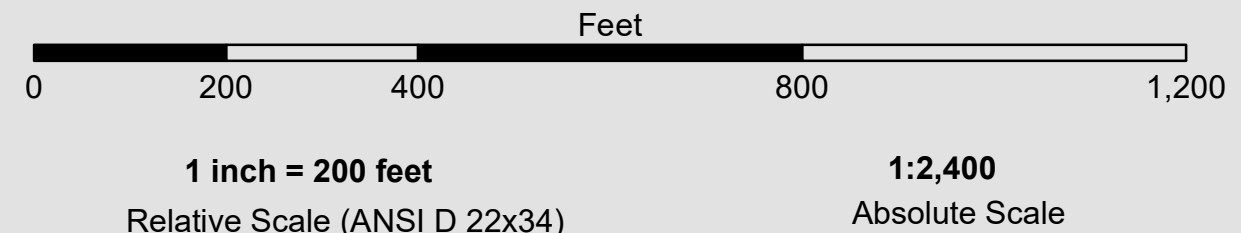


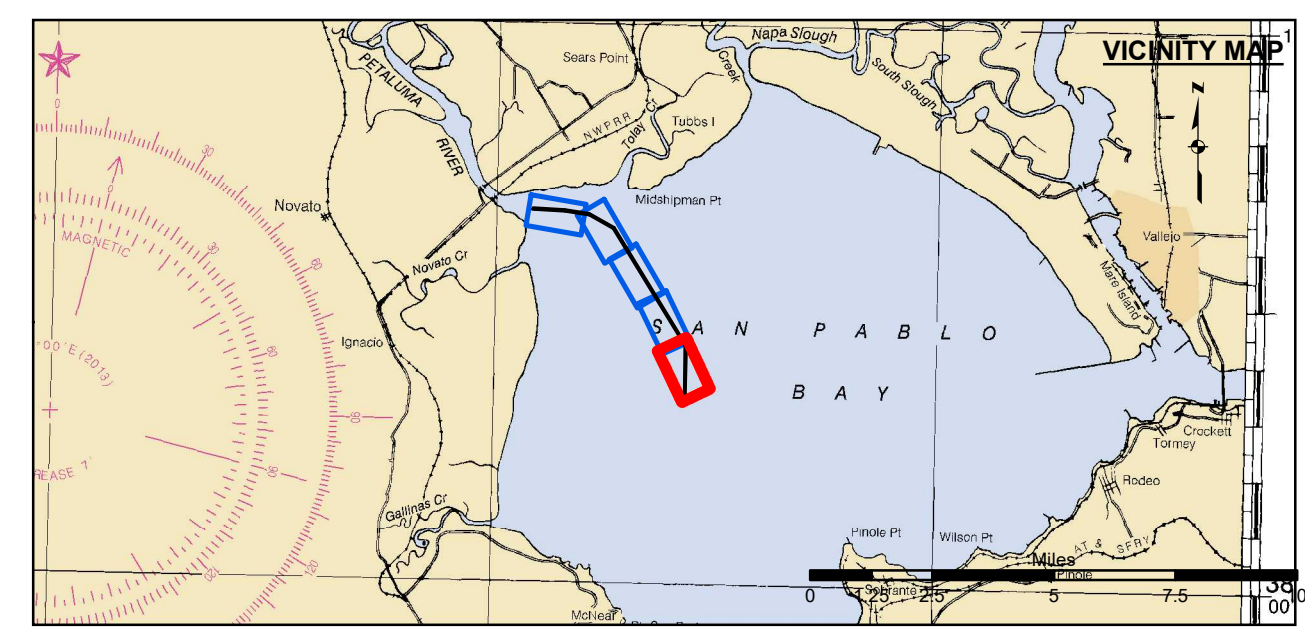
Angle Pt	X	Y
001	6006782.40	2212407.27
002	6006810.30	2218195.07
003	5998998.10	2230943.37
004	5996334.20	2232481.37
005	5993681.30	2232908.57
006	5990186.70	2233072.07

Angle Pt	X	Y
1	6006782.40	2212407.27
2	6006910.90	2218222.27
3	5999070.10	2231017.27
4	5996368.30	2232577.17
5	5993697.20	2233007.27
6	5990191.40	2233171.97
7	5990182.10	2232972.17
8	5993665.40	2232809.77
9	5996300.10	2232385.57
10	5998926.10	2230869.47
11	6006709.60	2218167.87
12	6006582.50	2212411.67

**PRELIMINARY ISSUE**  
THIS PLAN ISSUED FOR  
ADVANCE INFORMATION ONLY



← FLOOD  
EBB →



Federal Navigation Channel	Beacon, General	<b>Contours</b>
Shoaling Area	Obstruction Point	
Placement Area	Navigation Buoy	
Anchorage Area	Navigation Buoy	
Wreck Area	Shoalest Sounding*	
Submerged Wreck		-8
Angle Point		-7
		-6
		-5
		-4

NOTES:  
DRAWING NOT TO BE USED FOR NAVIGATION, ONLY CHANNEL CONDITION AT DATE OF SURVEY. THE LOCATION OF ALL NAVIGATION AIDS ARE BASED ON INFORMATION PROVIDED BY THE U.S. COAST GUARD. BUOY LOCATIONS REPRESENT THE POSITION OF THE SINKER ONLY.  
SURVEYED BY THE CORPS OF ENGINEERS.  
SOUNDINGS ARE TAKEN BY FATHOMETER AND ARE SHOWN TO THE NEAREST FOOT AND TENTHS OF A FOOT.  
SOUNDINGS ARE BASED ON THE DATUM OF MEAN LOWER LOW WATER AT THE LOCALITY.

PLANE GRID, BEARING AND COORDINATES ARE BASED ON THE STATE OF CALIFORNIA COORDINATE SYSTEM, LAMBERT PROJECTION, ZONE III NAD 83, CALIFORNIA, AS DESCRIBED IN SPECIAL PUBLICATION NO. 253, PUBLISHED BY NATIONAL OCEAN SURVEY.  
PROJECT DEPTH IS 8 FEET AT M.L.L.W.  
SOUNDINGS ARE BASED ON THE TIDE GAUGE LOCATED AT THE CHANNEL MARKER 4,10,16  
HORIZONTAL CONTROL: DESIGNATION, SOURCE, XYZ  
PRIMARY: RTK GPS VIA VRS NETWORK  
SECONDARY: COAST GUARD D-BEACON  
VERTICAL CONTROL: BENCHMARK, MLLW ELEV., AGENCY  
MON. "UNSTAMPED" USC&GS DISK., SW CONCRETE PIER OF R/R DRAWBRIDGE OVER CREEK., ELEV. 8.86 MLLW.

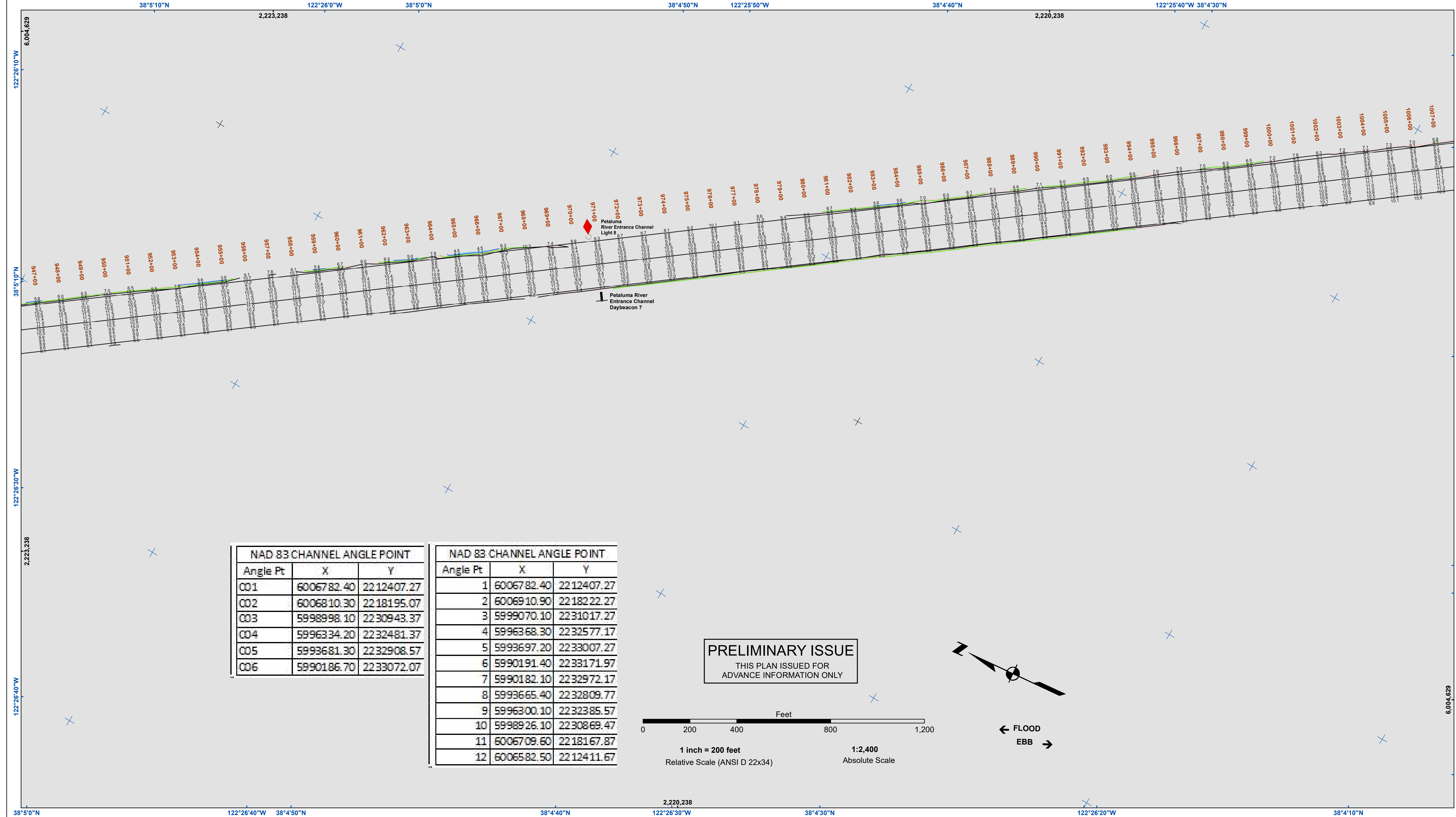


**DISCLAIMER**  
The United States Government furnishes this information as a service to the public and does not warrant, express or implied, the accuracy, completeness, or reliability of the data. The user is responsible for the results of any application of the data for other than its intended purpose. The United States Government makes no warranty, express or implied, concerning the accuracy, completeness, or reliability of the data. The user is responsible for the results of any application of the data for other than its intended purpose. These data belong to the Government. Therefore, the user is not to disseminate, copy, or otherwise use these data for other than its intended purpose. The recipient may not transfer these data to others without also transferring this disclaimer.

Prepared Under the Direction of <b>JOHN D. CUNNINGHAM</b> LT COLONEL, C.E., DISTRICT ENGINEER	Chart Date: Dec 18, 2020
Submitted: Hydro Survey Team Leader	Designed by:
Recommended: Chief, Hydro Survey Section	Drawn by: PDT
Approved: Chief, Construction Branch	Checked by: PDT

SONOMA COUNTY  
**PETALUMA RIVER  
ACROSS THE FLATS  
CONDITION SURVEY**  
15 DECEMBER 2020

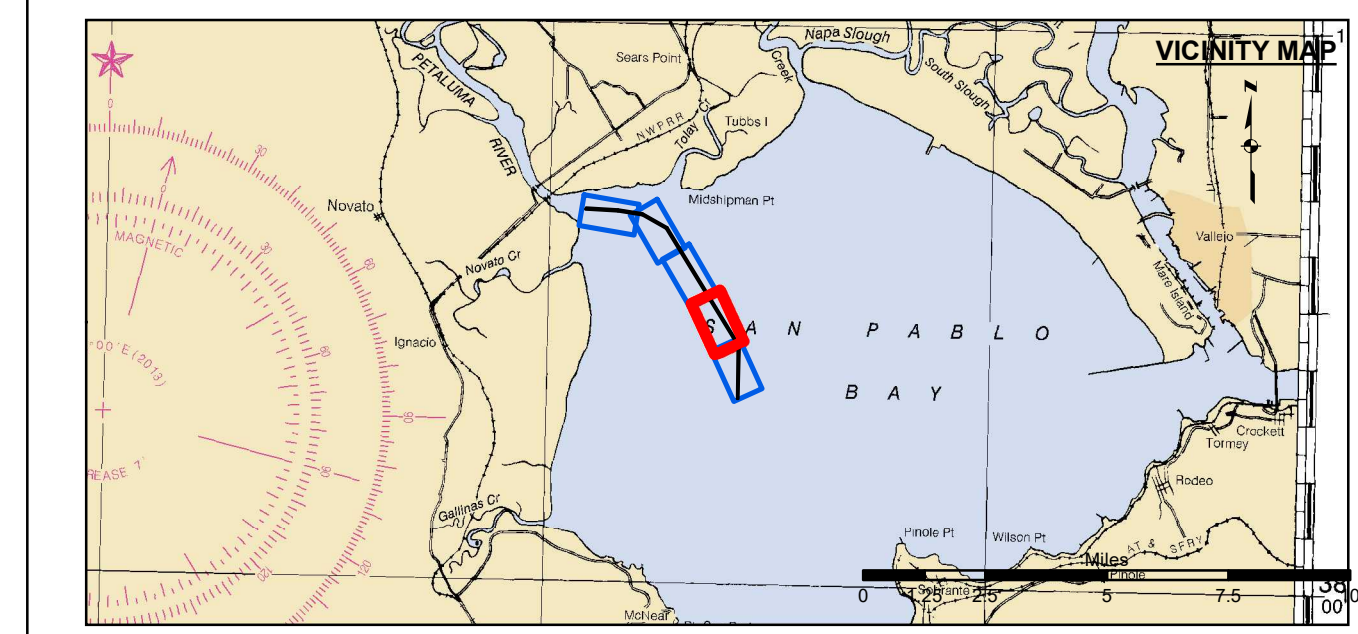
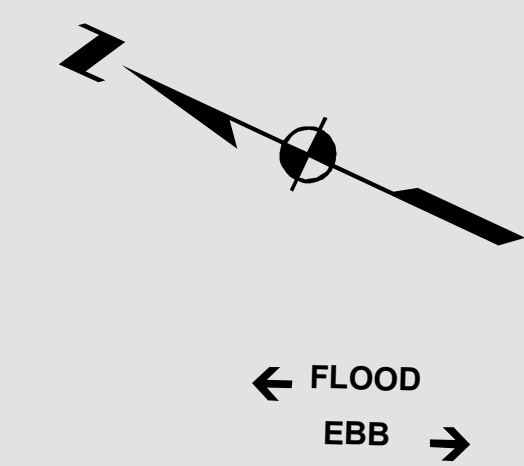
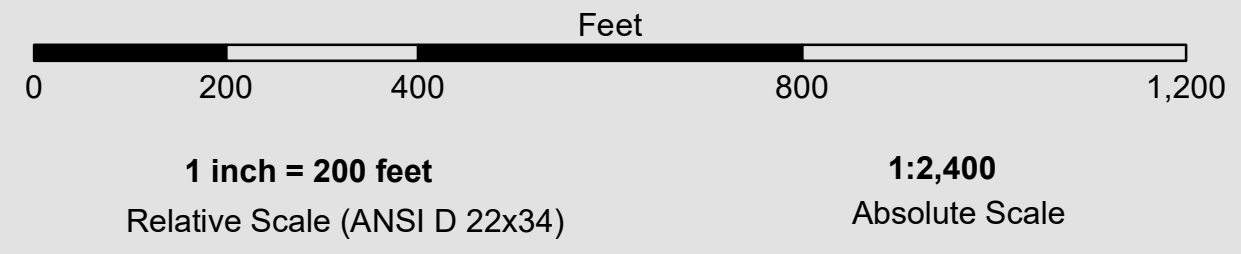
**Sheet  
Reference  
Number**  
1 of 5



NAD 83 CHANNEL ANGLE POINT		
Angle Pt	X	Y
001	6006782.40	2212407.27
002	6006810.30	2218195.07
003	5998998.10	2230943.37
004	5996334.20	2232481.37
005	5993681.30	2232908.57
006	5990186.70	2233072.07

NAD 83 CHANNEL ANGLE POINT		
Angle Pt	X	Y
1	6006782.40	2212407.27
2	6006910.90	2218222.27
3	5999070.10	2231017.27
4	5996368.30	2232577.17
5	5993697.20	2233007.27
6	5990191.40	2233171.97
7	5990182.10	2232972.17
8	5993665.40	2232809.77
9	5996300.10	2232385.57
10	5998926.10	2230869.47
11	6006709.60	2218167.87
12	6006582.50	2212411.67

**PRELIMINARY ISSUE**  
THIS PLAN ISSUED FOR  
ADVANCE INFORMATION ONLY



- Federal Navigation Channel
- Shoaling Area
- Placement Area
- Anchorage Area
- Wreck Area
- Submerged Wreck
- Angle Point
- Beacon, General
- Obstruction Point
- Navigation Buoy
- Navigation Buoy
- Shoalest Sounding\*
- Contours**
- 8
- 7
- 6
- 5
- 4

**NOTES:**

DRAWING NOT TO BE USED FOR NAVIGATION, ONLY CHANNEL CONDITION AT DATE OF SURVEY. THE LOCATION OF ALL NAVIGATION AIDS ARE BASED ON INFORMATION PROVIDED BY THE U.S. COAST GUARD. BUOY LOCATIONS REPRESENT THE POSITION OF THE SINKER ONLY.

SURVEYED BY THE CORPS OF ENGINEERS.

SOUNDINGS ARE TAKEN BY FATHOMETER AND ARE SHOWN TO THE NEAREST FOOT AND TENTHS OF A FOOT.

SOUNDINGS ARE BASED ON THE DATUM OF MEAN LOWER LOW WATER AT THE LOCALITY.

PLANE GRID, BEARING AND COORDINATES ARE BASED ON THE STATE OF CALIFORNIA COORDINATE SYSTEM, LAMBERT PROJECTION, ZONE III NAD 83, CALIFORNIA, AS DESCRIBED IN SPECIAL PUBLICATION NO. 253, PUBLISHED BY NATIONAL OCEAN SURVEY.

PROJECT DEPTH IS 8 FEET AT M.L.L.W.

SOUNDINGS ARE BASED ON THE TIDE GAUGE LOCATED AT THE CHANNEL MARKER 4,10,16

HORIZONTAL CONTROL: DESIGNATION, SOURCE, XYZ  
PRIMARY: RTK GPS VIA VRS NETWORK  
SECONDARY: COAST GUARD D-BEACON

VERTICAL CONTROL: BENCHMARK, MLLW ELEV., AGENCY  
MON. "UNSTAMPED" USC&GS DISK, SW CONCRETE PIER OF R/R DRAWBRIDGE OVER CREEK, ELEV. 8.86 MLLW.



**DISCLAIMER**

The United States Government furnishes this information as a service to the public and does not warrant, express or implied, the accuracy, completeness, or reliability of the data. The user is responsible for the results of any application of the data for other than its intended purpose. The user is responsible for the results of any application of the data for other than its intended purpose.

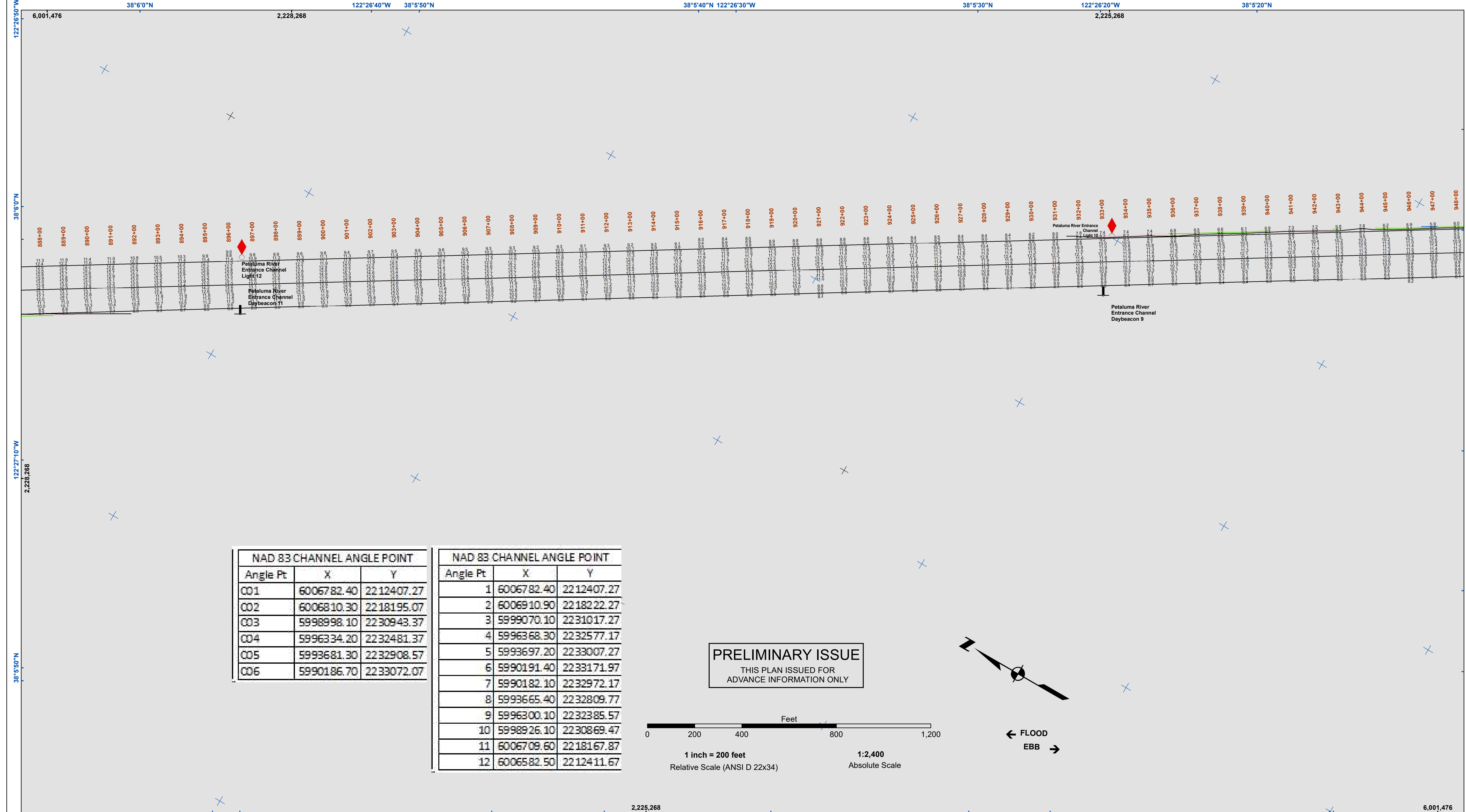
Prepared Under the Direction of <b>JOHN D. CUNNINGHAM</b> LT COLONEL, C.E., DISTRICT ENGINEER	Chart Date: Dec 18, 2020
Submitted by: PDT	Designed by:
Recommended by: Chief, Hydro Survey Section	Drawn by: PDT
Approved by: Chief, Construction Branch	Checked by: PDT

SONOMA COUNTY  
CALIFORNIA  
**PETALUMA RIVER  
ACROSS THE FLATS  
CONDITION SURVEY**  
15 DECEMBER 2020

**Sheet  
Reference  
Number**  
**2 of 5**

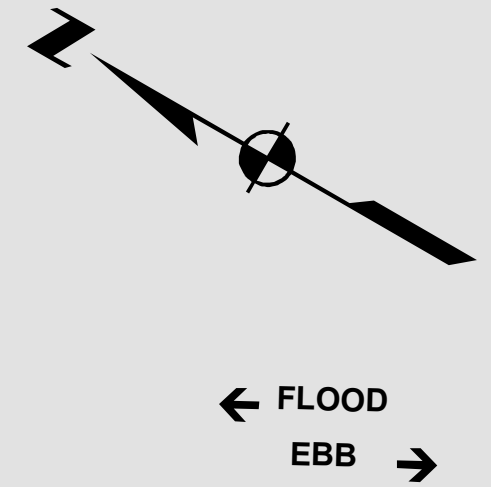
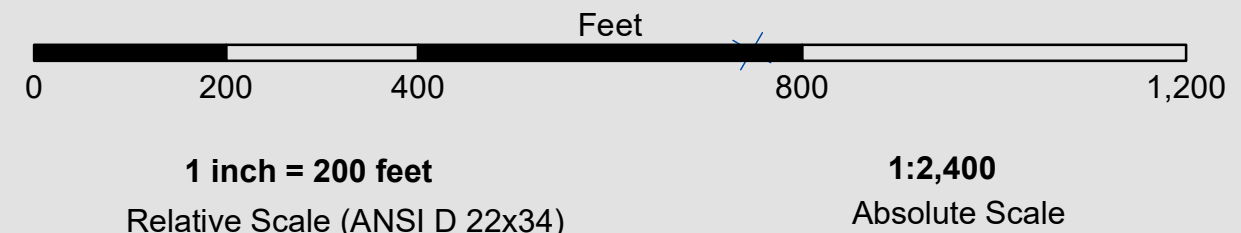


San Francisco District  
450 Golden Gate  
San Francisco, CA 94102



Angle Pt	X	Y
001	6006782.40	2212407.27
002	6006810.30	2218195.07
003	5998998.10	2230943.37
004	5996334.20	2232481.37
005	5993681.30	2232908.57
006	5990186.70	2233072.07

Angle Pt	X	Y
1	6006782.40	2212407.27
2	6006910.90	2218222.27
3	5999070.10	2231017.27
4	5996368.30	2232577.17
5	5993697.20	2233007.27
6	5990191.40	2233171.97
7	5990182.10	2232972.17
8	5993665.40	2232809.77
9	5996300.10	2232385.57
10	5998926.10	2230869.47
11	6006709.60	2218167.87
12	6006582.50	2212411.67



Federal Navigation Channel	Beacon, General	<b>Contours</b>
Shoaling Area	Obstruction Point	
Placement Area	Navigation Buoy	
Anchorage Area	Navigation Buoy	
Wreck Area	Shoalest Sounding*	
Submerged Wreck		-8
Angle Point		-7
		-6
		-5
		-4

**NOTES:**  
DRAWING NOT TO BE USED FOR NAVIGATION, ONLY CHANNEL CONDITION AT DATE OF SURVEY.  
THE LOCATION OF ALL NAVIGATION AIDS ARE BASED ON INFORMATION PROVIDED BY THE U.S. COAST GUARD. BUOY LOCATIONS REPRESENT THE POSITION OF THE SINKER ONLY.

SURVEYED BY THE CORPS OF ENGINEERS.  
SOUNDINGS ARE TAKEN BY FATHOMETER AND ARE SHOWN TO THE NEAREST FOOT AND TENTHS OF A FOOT.  
SOUNDINGS ARE BASED ON THE DATUM OF MEAN LOWER LOW WATER AT THE LOCALITY.

PLANE GRID, BEARING AND COORDINATES ARE BASED ON THE STATE OF CALIFORNIA COORDINATE SYSTEM, LAMBERT PROJECTION, ZONE III NAD 83, CALIFORNIA, AS DESCRIBED IN SPECIAL PUBLICATION NO. 253, PUBLISHED BY NATIONAL OCEAN SURVEY.

PROJECT DEPTH IS 8 FEET AT M.L.L.W.  
SOUNDINGS ARE BASED ON THE TIDE GAUGE LOCATED AT THE CHANNEL MARKER 4,10,16

HORIZONTAL CONTROL: DESIGNATION, SOURCE, XYZ  
PRIMARY: RTK GPS VIA VRS NETWORK  
SECONDARY: COAST GUARD D-BEACON

VERTICAL CONTROL: BENCHMARK, MLLW ELEV., AGENCY  
MON. "UNSTAMPED" USC&GS DISK., SW CONCRETE PIER OF R/R DRAWBRIDGE OVER CREEK., ELEV. 8.86 MLLW.

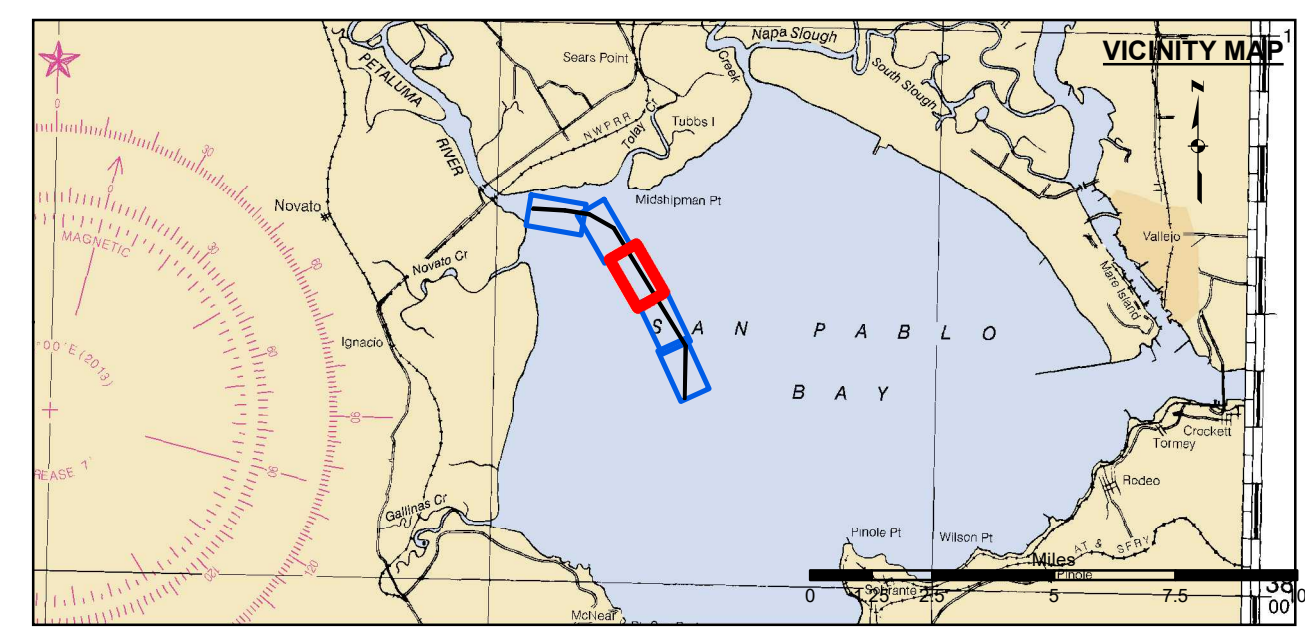
**DISCLAIMER:** The United States Government furnishes this information for general information only. The information is not to be used for any purpose other than that for which it was prepared. The user assumes all liability for any use of the information. The user is responsible for the results of any application of the data for other than its intended purpose.

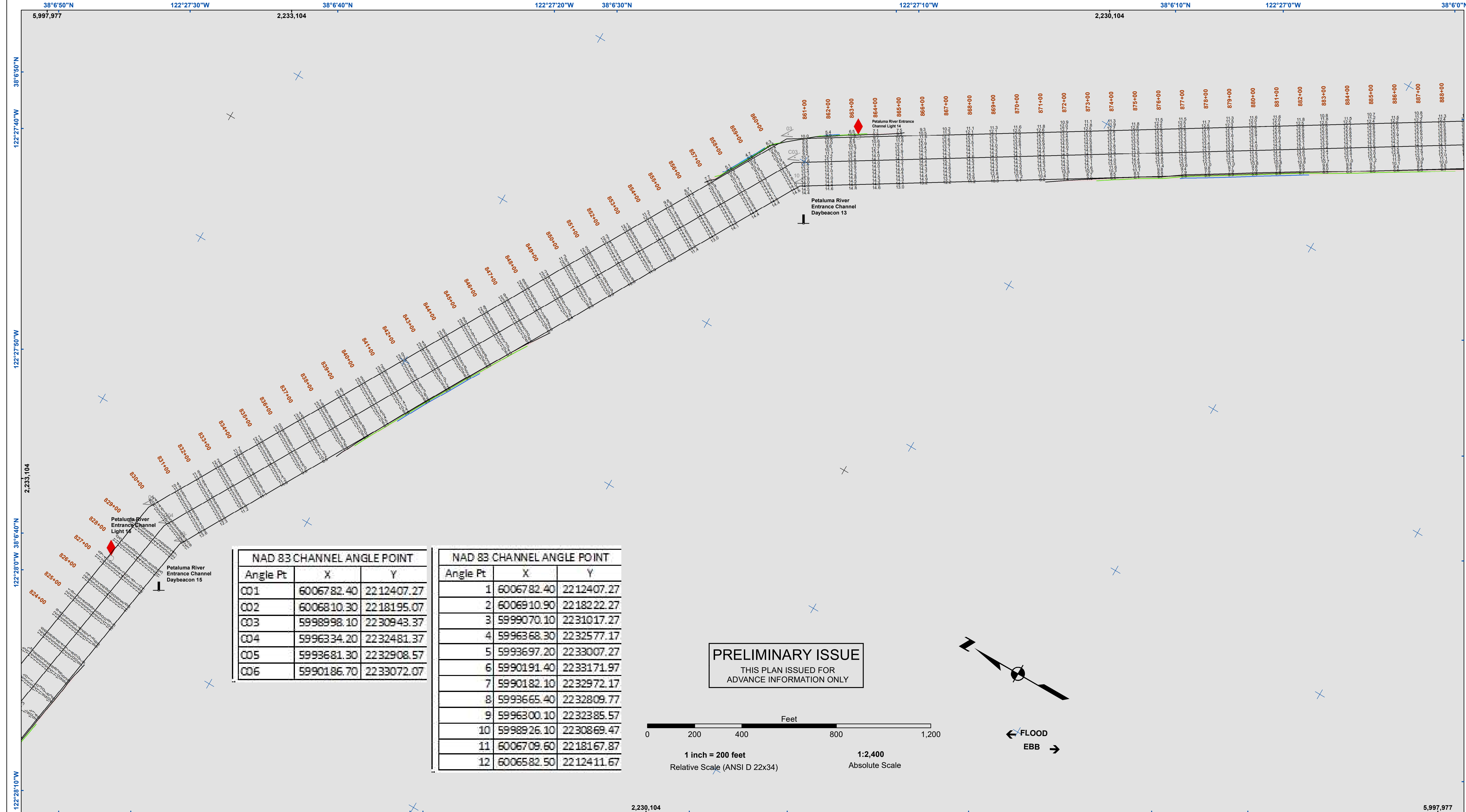
**Distribution Liability:** The data represents the results of data collection and processing. Engineers activity and indicates the general existing conditions. As such, it is only valid for its intended use, content, time and accuracy specifications. The user is responsible for the results of any application of the data for other than its intended purpose.

Prepared Under the Direction of <b>JOHN D. CUNNINGHAM</b> LT COLONEL, C.E., DISTRICT ENGINEER	Chart Date: Dec 18, 2020
Submitted by: PDT	Designed by:
Recommended by: Hydro Survey Team Leader	Drawn by: PDT
Approved by: Chief, Hydro Survey Section	Checked by: PDT
Approved by: Chief, Construction Branch	Drawn by: PDT

SONOMA COUNTY  
**PETALUMA RIVER  
ACROSS THE FLATS  
CONDITION SURVEY**  
15 DECEMBER 2020

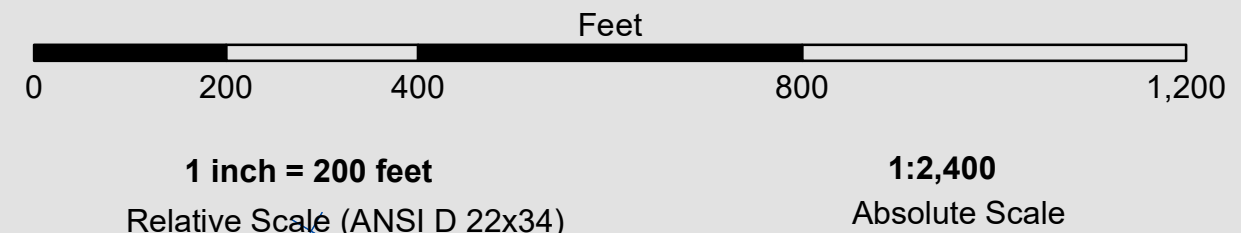
**Sheet  
Reference  
Number**  
**3 of 5**



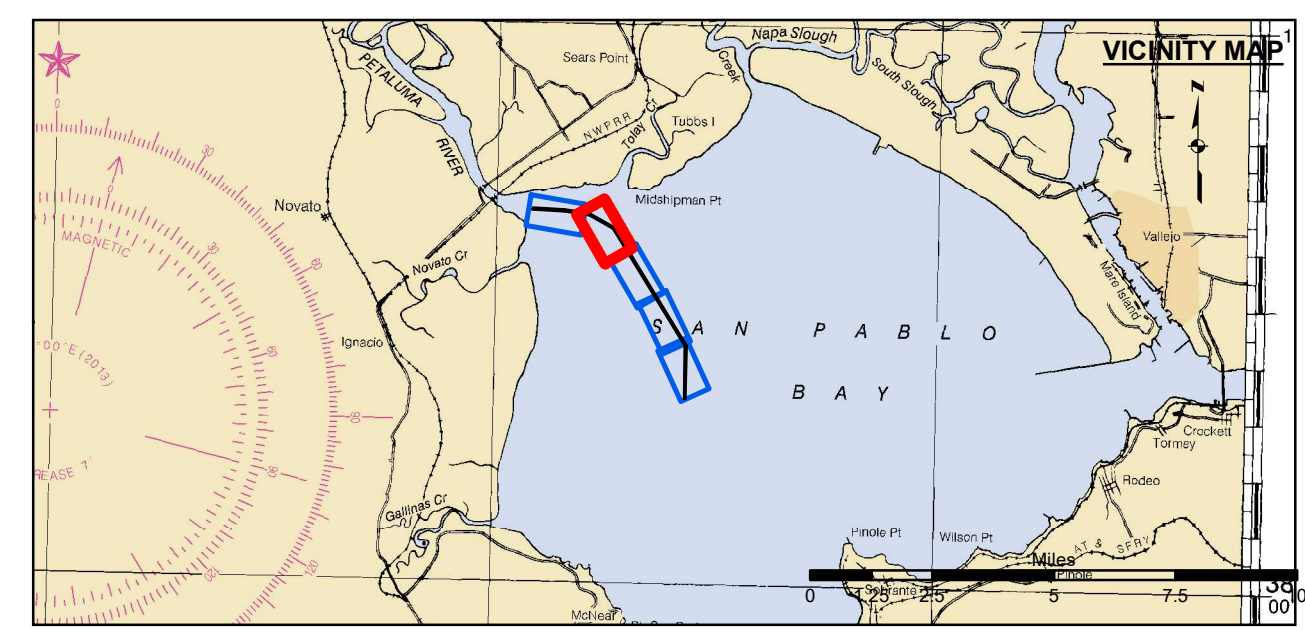


Angle Pt	X	Y
001	6006782.40	2212407.27
002	6006810.30	2218195.07
003	5998998.10	2230943.37
004	5996334.20	2232481.37
005	5993681.30	2232908.57
006	5990186.70	2233072.07

Angle Pt	X	Y
1	6006782.40	2212407.27
2	6006910.90	2218222.27
3	5999070.10	2231017.27
4	5996368.30	2232577.17
5	5993697.20	2233007.27
6	5990191.40	2233171.97
7	5990182.10	2232972.17
8	5993665.40	2232809.77
9	5996300.10	2232385.57
10	5998926.10	2230869.47
11	6006709.60	2218167.87
12	6006582.50	2212411.67



← FLOOD  
EBB →



- Federal Navigation Channel
- Shoaling Area
- Placement Area
- - - Anchorage Area
- ▨ Wreck Area
- ✈ Submerged Wreck
- ∠ Angle Point
- ⊥ Beacon, General
- ⊗ Obstruction Point
- ◇ Navigation Buoy
- ◆ Navigation Buoy
- Shoalest Sounding\*
- Contours**
- -8
- -7
- -6
- -5
- -4

NOTES:  
DRAWING NOT TO BE USED FOR NAVIGATION, ONLY CHANNEL CONDITION AT DATE OF SURVEY. THE LOCATION OF ALL NAVIGATION AIDS ARE BASED ON INFORMATION PROVIDED BY THE U.S. COAST GUARD. BUOY LOCATIONS REPRESENT THE POSITION OF THE SINKER ONLY.  
SURVEYED BY THE CORPS OF ENGINEERS.  
SOUNDINGS ARE TAKEN BY FATHOMETER AND ARE SHOWN TO THE NEAREST FOOT AND TENTHS OF A FOOT.  
SOUNDINGS ARE BASED ON THE DATUM OF MEAN LOWER LOW WATER AT THE LOCALITY.

PLANE GRID, BEARING AND COORDINATES ARE BASED ON THE STATE OF CALIFORNIA COORDINATE SYSTEM, LAMBERT PROJECTION, ZONE III NAD 83, CALIFORNIA, AS DESCRIBED IN SPECIAL PUBLICATION NO. 253, PUBLISHED BY NATIONAL OCEAN SURVEY.  
PROJECT DEPTH IS 8 FEET AT M.L.L.W.  
SOUNDINGS ARE BASED ON THE TIDE GAUGE LOCATED AT THE CHANNEL MARKER 4,10,16  
HORIZONTAL CONTROL: DESIGNATION, SOURCE, XYZ  
PRIMARY: RTK GPS VIA VRS NETWORK  
SECONDARY: COAST GUARD D-BEACON  
VERTICAL CONTROL: BENCHMARK, MLLW ELEV., AGENCY  
MON. "UNSTAMPED" USC&GS DISK, SW CONCRETE PIER OF R/R DRAWBRIDGE OVER CREEK, ELEV. 8.86 MLLW.

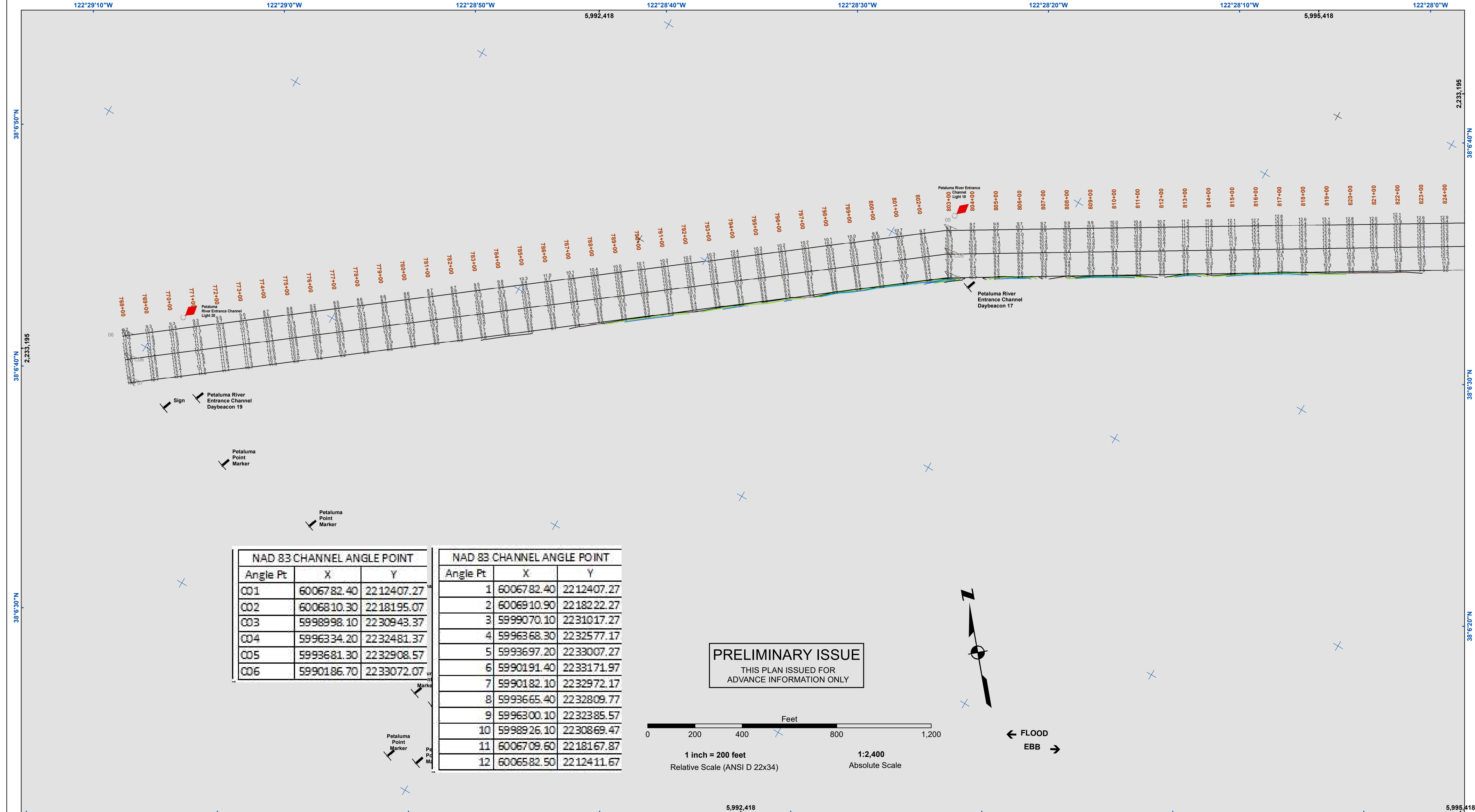


**DISCLAIMER**  
The United States Government furnishes this information for the purpose of providing accurate and reliable data for the use of the user. The user is responsible for the results of any application of the data for other than its intended purpose. The user is responsible for the results of any application of the data for other than its intended purpose. The user is responsible for the results of any application of the data for other than its intended purpose.

Prepared Under the Direction of <b>JOHN D. CUNNINGHAM</b> LT COLONEL, C.E., DISTRICT ENGINEER	Chart Date: Dec 16, 2020
Submitted by: PDT	Designed by:
Recommended by: Chief, Hydro Survey Section	Drawn by: PDT
Approved by: Chief, Construction Branch	Checked by: PDT

SONOMA COUNTY  
CALIFORNIA  
**PETALUMA RIVER  
ACROSS THE FLATS  
CONDITION SURVEY**  
15 DECEMBER 2020

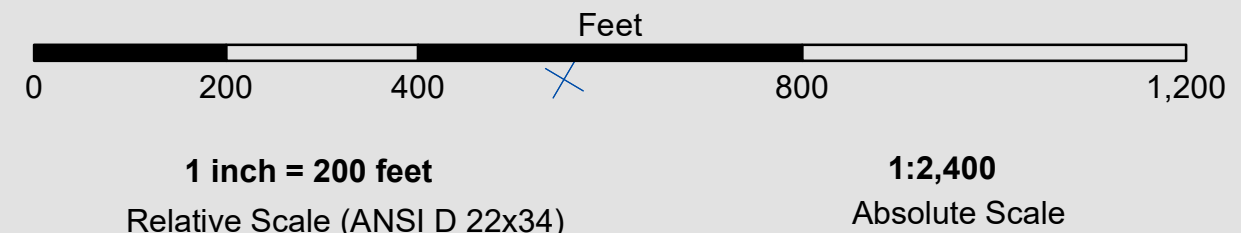
**Sheet  
Reference  
Number  
4 of 5**



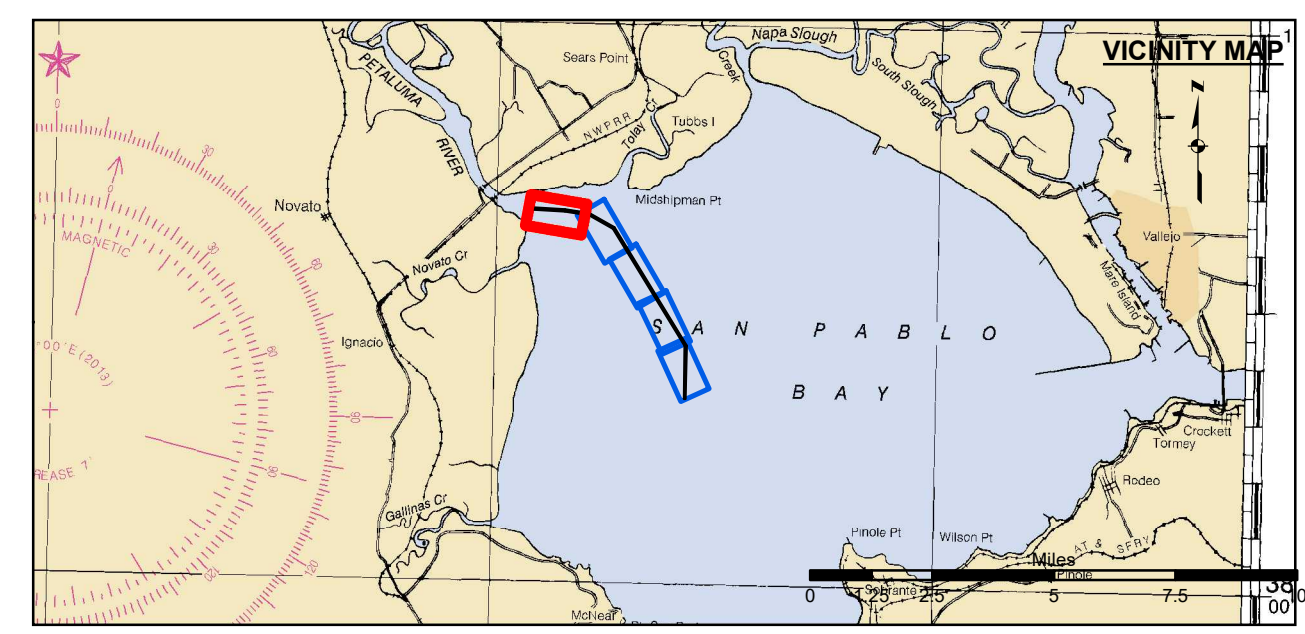
Angle Pt	X	Y
001	6006782.40	2212407.27
002	6006810.30	2218195.07
003	5998998.10	2230943.37
004	5996334.20	2232481.37
005	5993681.30	2232908.57
006	5990186.70	2233072.07

Angle Pt	X	Y
1	6006782.40	2212407.27
2	6006910.90	2218222.27
3	5999070.10	2231017.27
4	5996368.30	2232577.17
5	5993697.20	2233007.27
6	5990191.40	2233171.97
7	5990182.10	2232972.17
8	5993665.40	2232809.77
9	5996300.10	2232385.57
10	5998926.10	2230869.47
11	6006709.60	2218167.87
12	6006582.50	2212411.67

**PRELIMINARY ISSUE**  
THIS PLAN ISSUED FOR  
ADVANCE INFORMATION ONLY



← FLOOD  
EBB →



- Federal Navigation Channel
  - Shoaling Area
  - Placement Area
  - Anchorage Area
  - Wreck Area
  - Submerged Wreck
  - Angle Point
  - Beacon, General
  - Obstruction Point
  - Navigation Buoy
  - Navigation Buoy
  - Shoalest Sounding\*
- Contours**
- 8
  - 7
  - 6
  - 5
  - 4

NOTES:  
DRAWING NOT TO BE USED FOR NAVIGATION, ONLY CHANNEL CONDITION AT DATE OF SURVEY.  
THE LOCATION OF ALL NAVIGATION AIDS ARE BASED ON INFORMATION PROVIDED BY THE U.S. COAST GUARD. BUOY LOCATIONS REPRESENT THE POSITION OF THE SINKER ONLY.  
SURVEYED BY THE CORPS OF ENGINEERS.  
SOUNDINGS ARE TAKEN BY FATHOMETER AND ARE SHOWN TO THE NEAREST FOOT AND TENTHS OF A FOOT.  
SOUNDINGS ARE BASED ON THE DATUM OF MEAN LOWER LOW WATER AT THE LOCALITY.

PLANE GRID, BEARING AND COORDINATES ARE BASED ON THE STATE OF CALIFORNIA COORDINATE SYSTEM, LAMBERT PROJECTION, ZONE III NAD 83, CALIFORNIA, AS DESCRIBED IN SPECIAL PUBLICATION NO. 253, PUBLISHED BY NATIONAL OCEAN SURVEY.  
PROJECT DEPTH IS 8 FEET AT M.L.L.W.  
SOUNDINGS ARE BASED ON THE TIDE GAUGE LOCATED AT THE CHANNEL MARKER 4,10,16  
HORIZONTAL CONTROL: DESIGNATION, SOURCE, XYZ  
PRIMARY: RTK GPS VIA VRS NETWORK  
SECONDARY: COAST GUARD D-BEACON  
VERTICAL CONTROL: BENCHMARK, MLLW ELEV., AGENCY  
MON. "UNSTAMPED" USC&GS DISK., SW CONCRETE PIER OF R/R DRAWBRIDGE OVER CREEK., ELEV. 8.86 MLLW.



**DISCLAIMER**  
The United States Government furnishes this information as a service to the public. It is not intended to be used for any purpose other than that for which it was prepared. The United States Government makes no warranty, expressed or implied, concerning the accuracy, completeness, or timeliness of the data furnished. The user is responsible for the results of any application of the data for other than its intended purpose. Distribution Liability: The data represents the results of data collection and processing. Engineers activity and indicates the general existing conditions. As such, it is only valid for its intended use, content, time and accuracy applications. The user is responsible for the results of any application of the data for other than its intended purpose.

Prepared Under the Direction of <b>JOHN D. CUNNINGHAM</b> LT COLONEL, C.E., DISTRICT ENGINEER	Chart Date: Dec 18, 2020
Submitted by: PDT	Designed by:
Recommended by: Chief, Hydro Survey Section	Drawn by: PDT
Approved by: Chief, Construction Branch	

SONOMA COUNTY  
**PETALUMA RIVER  
ACROSS THE FLATS  
CONDITION SURVEY**  
15 DECEMBER 2020

**Sheet  
Reference  
Number**  
**5 of 5**