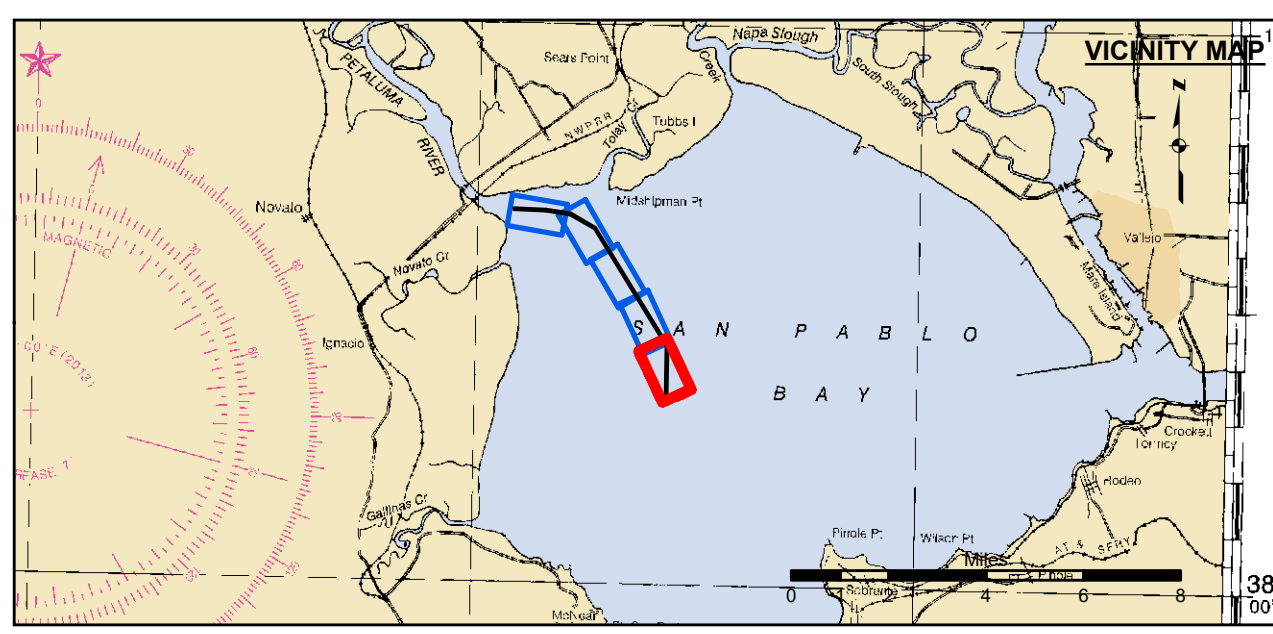
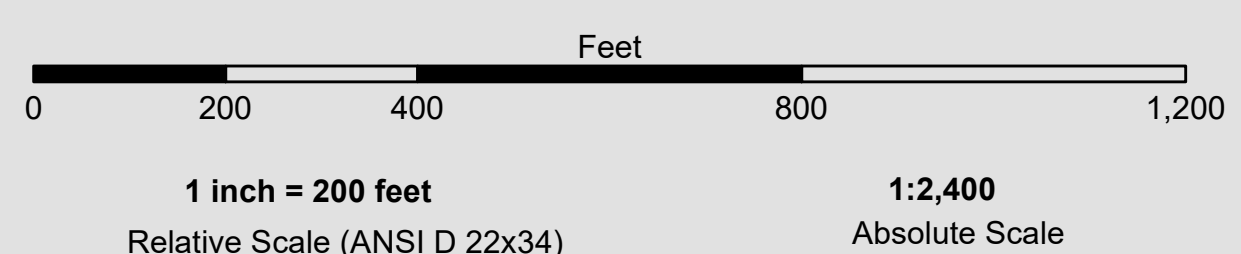


Angle Pt	X	Y
001	6006782.40	2212407.27
002	6006810.30	2218195.07
003	5998998.10	2230943.37
004	5996334.20	2232481.37
005	5993681.30	2232908.57
006	5990186.70	2233072.07

Angle Pt	X	Y
1	6006782.40	2212407.27
2	6006910.90	2218222.27
3	5999070.10	2231017.27
4	5996368.30	2232577.17
5	5993697.20	2233007.27
6	5990191.40	2233171.97
7	5990182.10	2232972.17
8	5993665.40	2232809.77
9	5996300.10	2232385.57
10	5998926.10	2230869.47
11	6006709.60	2218167.87
12	6006582.50	2212411.67

PRELIMINARY ISSUE
THIS PLAN ISSUED FOR
ADVANCE INFORMATION ONLY



Federal Navigation Channel	Beacon, General	Contours
Shoaling Area	Obstruction Point	-8
Placement Area	Navigation Buoy	-7
Anchorage Area	Navigation Buoy	-6
Wreck Area	Shoalest Sounding*	-5
Submerged Wreck		-4
Angle Point		

NOTES:
DRAWING NOT TO BE USED FOR NAVIGATION, ONLY CHANNEL CONDITION AT DATE OF SURVEY. THE LOCATION OF ALL NAVIGATION AIDS ARE BASED ON INFORMATION PROVIDED BY THE U.S. COAST GUARD. BUOY LOCATIONS REPRESENT THE POSITION OF THE SINKER ONLY.
SURVEYED BY THE CORPS OF ENGINEERS.
SOUNDINGS ARE TAKEN BY FATHOMETER AND ARE SHOWN TO THE NEAREST FOOT AND TENTHS OF A FOOT.
SOUNDINGS ARE BASED ON THE DATUM OF MEAN LOWER LOW WATER AT THE LOCALITY.

PLANE GRID, BEARING AND COORDINATES ARE BASED ON THE STATE OF CALIFORNIA COORDINATE SYSTEM, LAMBERT PROJECTION, ZONE III NAD 83, CALIFORNIA, AS DESCRIBED IN SPECIAL PUBLICATION NO. 253, PUBLISHED BY NATIONAL OCEAN SURVEY.
PROJECT DEPTH IS 8 FEET AT M.L.L.W.
SOUNDINGS ARE BASED ON THE TIDE GAUGE LOCATED AT THE CHANNEL MARKER 4, 10, 16
HORIZONTAL CONTROL: DESIGNATION, SOURCE, XYZ
PRIMARY: RTK GPS VIA VRS NETWORK
SECONDARY: COAST GUARD D-BEACON
VERTICAL CONTROL: BENCHMARK, MMLW ELEV., AGENCY
MON. "UNSTAMPED" USC&GS DISK., SW CONCRETE PIER OF R/R DRAWBRIDGE OVER CREEK., ELEV. 8.86 MLLW AND NAVD 88 DATUM.

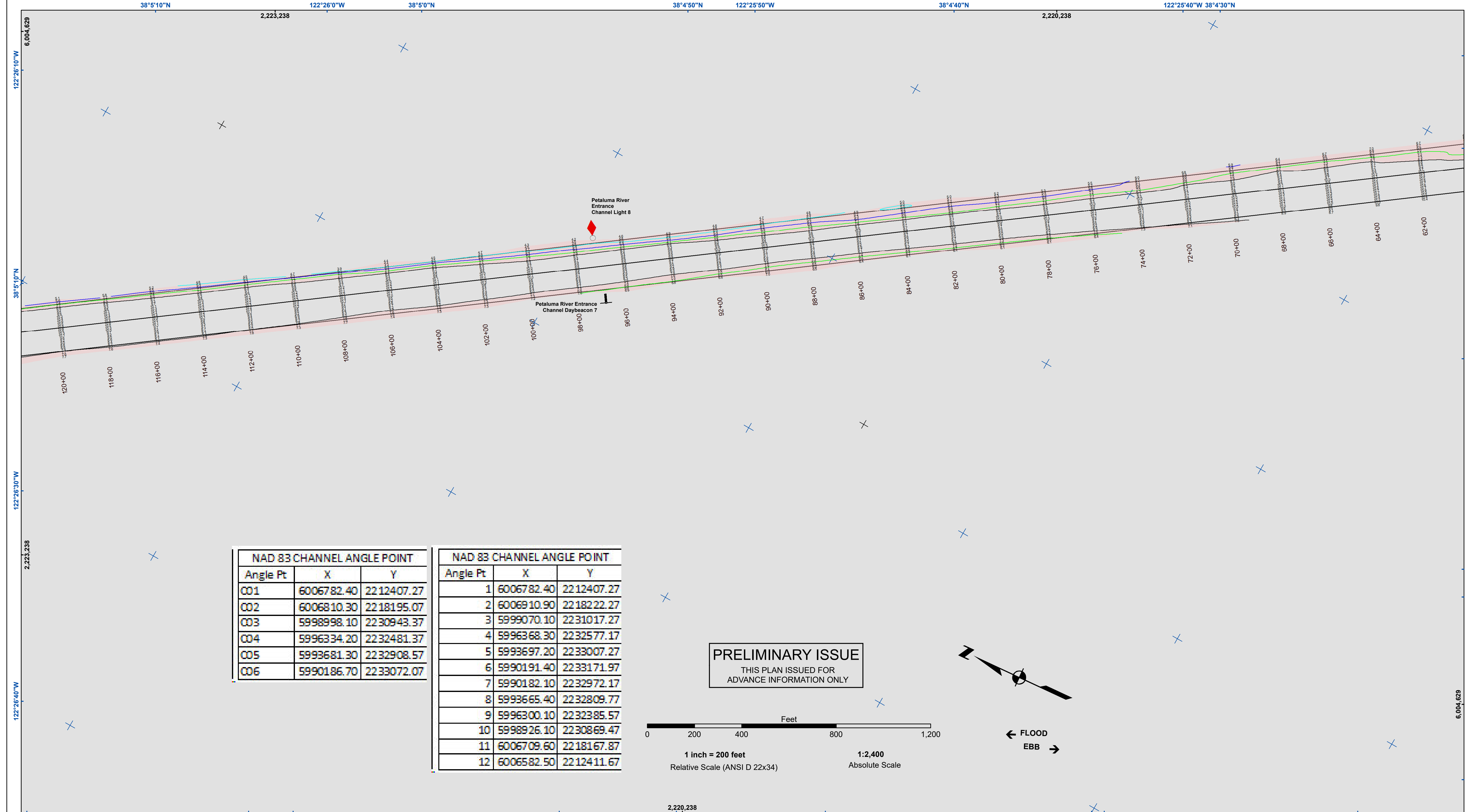
US Army Corps of Engineers
San Francisco District
1455 Market Street
San Francisco, CA 94103

DISCLAIMER
The United States Government furnishes this information for the general information of the recipient. The data represents the results of data collected by the U.S. Army Corps of Engineers and is not intended for use in any other manner than for the intended purpose. The user is responsible for the results of any application of the data for other than the intended purpose. The recipient may not transfer these data to others without also transferring this disclaimer.

Prepared Under the Direction of TRAVIS J. RAYFIELD LT COLONEL, C.E., DISTRICT ENGINEER	Chart Date: Mar 26, 2018
Submitted: PDT	Designed by:
Recommended: Hydro Survey Team Leader	Drawn by: PDT
Approved: Chief, Hydro Survey Section	Checked by: PDT
Approved: Chief, Construction Branch	

SONOMA COUNTY
PETALUMA RIVER
CONDITION SURVEY
19 DECEMBER 2017

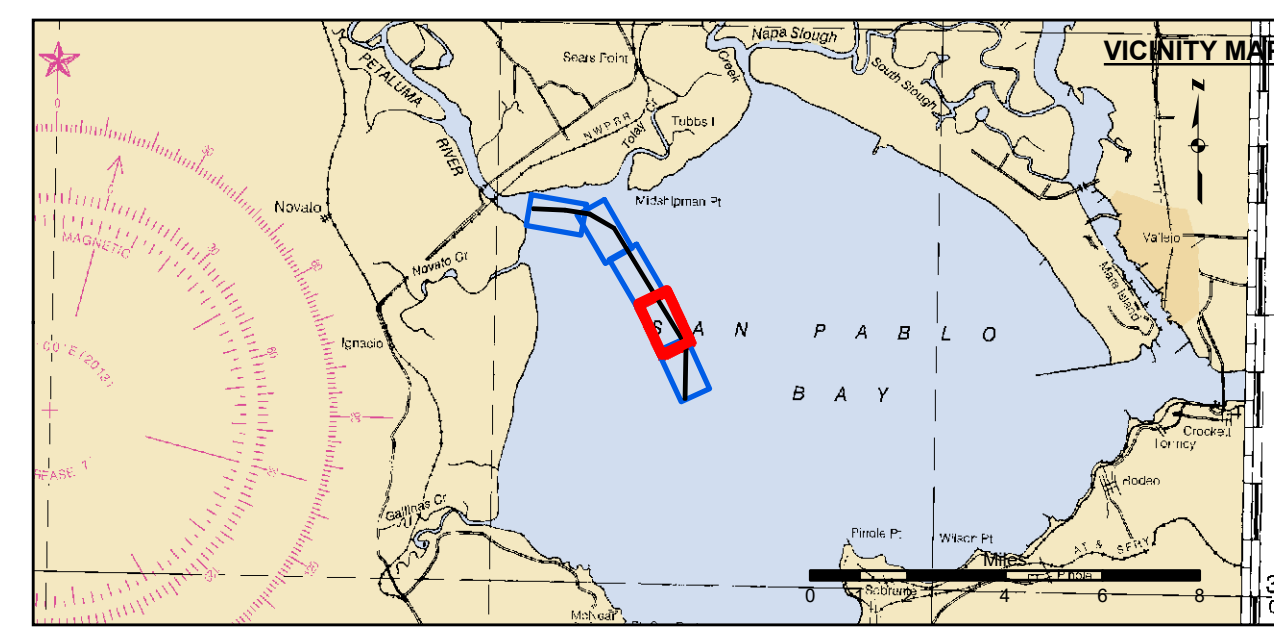
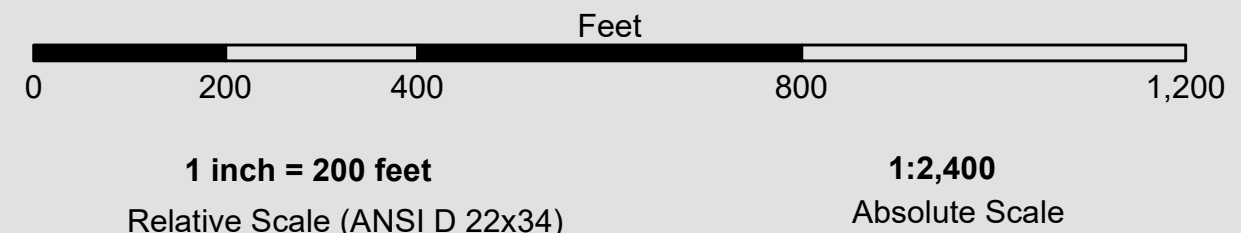
Sheet Reference Number
1 of 5



NAD 83 CHANNEL ANGLE POINT		
Angle Pt	X	Y
001	6006782.40	2212407.27
002	6006810.30	2218195.07
003	5998898.10	2230943.37
004	5996334.20	2232481.37
005	5993681.30	2232908.57
006	5990186.70	2233072.07

NAD 83 CHANNEL ANGLE POINT		
Angle Pt	X	Y
1	6006782.40	2212407.27
2	6006910.90	2218222.27
3	5999070.10	2231017.27
4	5996368.30	2232577.17
5	5993697.20	2233007.27
6	5990191.40	2233171.97
7	5990182.10	2232972.17
8	5993665.40	2232809.77
9	5996300.10	2232385.57
10	5998926.10	2230869.47
11	6006709.60	2218167.87
12	6006582.50	2212411.67

PRELIMINARY ISSUE
THIS PLAN ISSUED FOR
ADVANCE INFORMATION ONLY



Federal Navigation Channel	Beacon, General	Contours
Shoaling Area	Obstruction Point	-8
Placement Area	Navigation Buoy	-7
Anchorage Area	Navigation Buoy	-6
Wreck Area	Shoalest Sounding*	-5
Submerged Wreck		-4
Angle Point		

NOTES:
DRAWING NOT TO BE USED FOR NAVIGATION, ONLY CHANNEL CONDITION AT DATE OF SURVEY. THE LOCATION OF ALL NAVIGATION AIDS ARE BASED ON INFORMATION PROVIDED BY THE U.S. COAST GUARD. BUOY LOCATIONS REPRESENT THE POSITION OF THE SINKER ONLY.
SURVEYED BY THE CORPS OF ENGINEERS.
SOUNDINGS ARE TAKEN BY FATHOMETER AND ARE SHOWN TO THE NEAREST FOOT AND TENTHS OF A FOOT.
SOUNDINGS ARE BASED ON THE DATUM OF MEAN LOWER LOW WATER AT THE LOCALITY.

PLANE GRID, BEARING AND COORDINATES ARE BASED ON THE STATE OF CALIFORNIA COORDINATE SYSTEM, LAMBERT PROJECTION, ZONE III NAD 83, CALIFORNIA, AS DESCRIBED IN SPECIAL PUBLICATION NO. 253, PUBLISHED BY NATIONAL OCEAN SURVEY.
PROJECT DEPTH IS 8 FEET AT M.L.L.W.
SOUNDINGS ARE BASED ON THE TIDE GAUGE LOCATED AT THE CHANNEL MARKER 4, 10, 16
HORIZONTAL CONTROL: DESIGNATION, SOURCE, XYZ
PRIMARY: RTK GPS VIA VRS NETWORK
SECONDARY: COAST GUARD D-BEACON
VERTICAL CONTROL: BENCHMARK, MMLW ELEV., AGENCY
MON. "UNSTAMPED" USC&GS DISK., SW CONCRETE PIER OF R/R DRAWBRIDGE OVER CREEK., ELEV. 8.86 MLLW AND NAVD 88 DATUM.

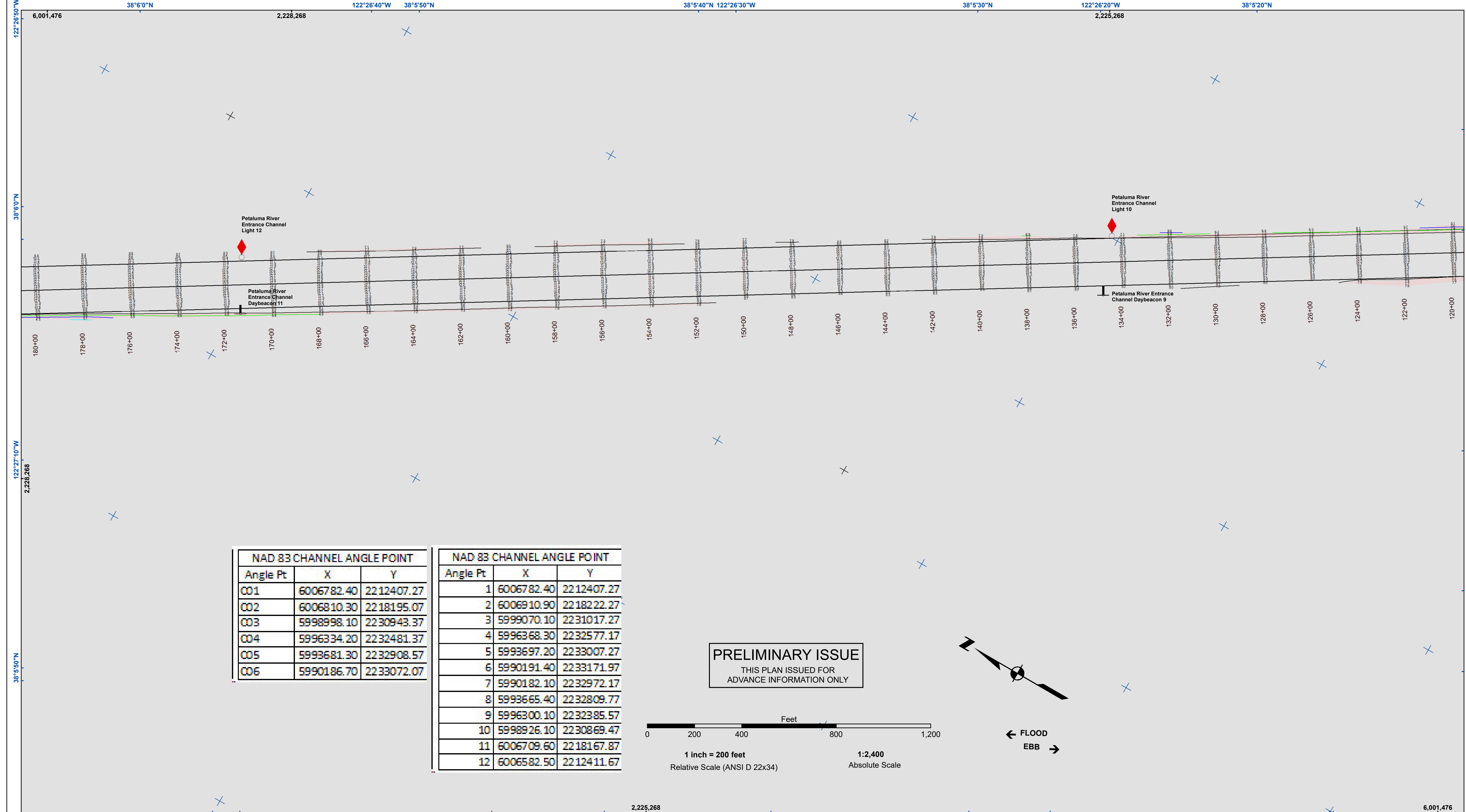


DISCLAIMER: The United States Government furnishes this information for general information only. The United States Government makes no warranty, expressed or implied, concerning the accuracy, completeness, reliability, usability, or timeliness of the information. The United States Government shall not be liable for any damages, including any general, special, incidental, or consequential damages, arising out of the use of the information. The user assumes all liability for the use of the information. The user shall not transfer these data to others without also transferring this disclaimer.

Prepared Under the Direction of TRAVIS J. RAYFIELD LT COLONEL, C.E., DISTRICT ENGINEER	Chart Date: Mar 26, 2018
Submitted by: PDT	Designed by:
Recommended by: Hydro Survey Team Leader	Drawn by: PDT
Approved by: Chief, Hydro Survey Section	Checked by: PDT
Approved by: Chief, Construction Branch	

SONOMA COUNTY
PETALUMA RIVER
CONDITION SURVEY
19 DECEMBER 2017

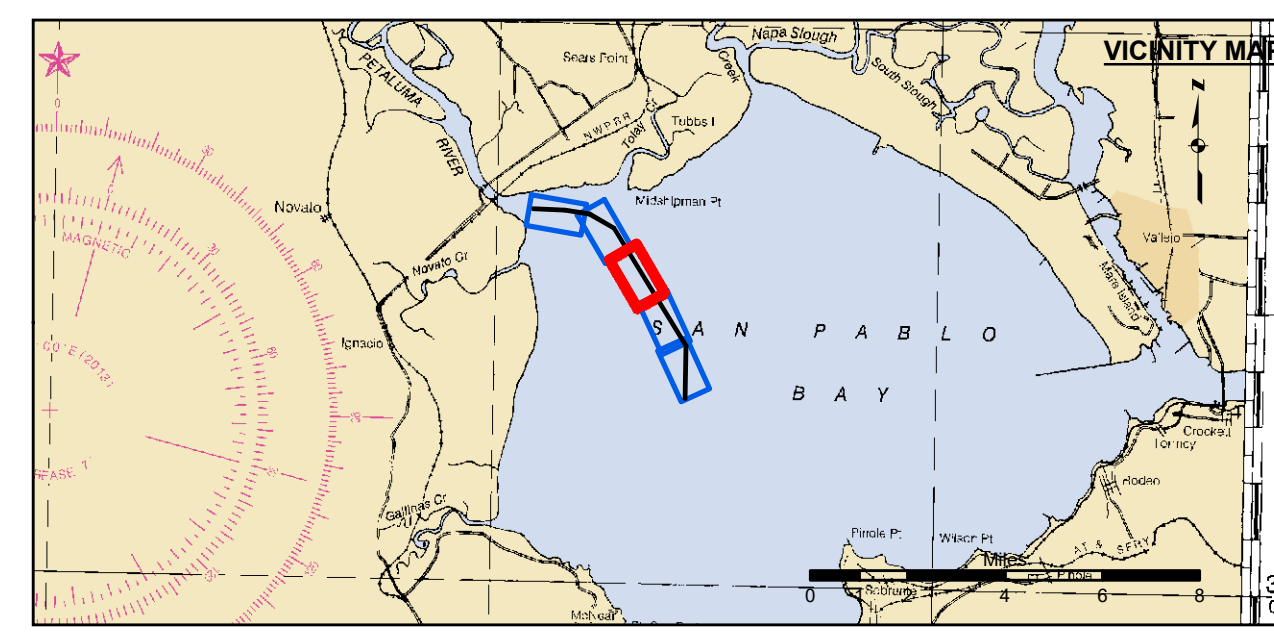
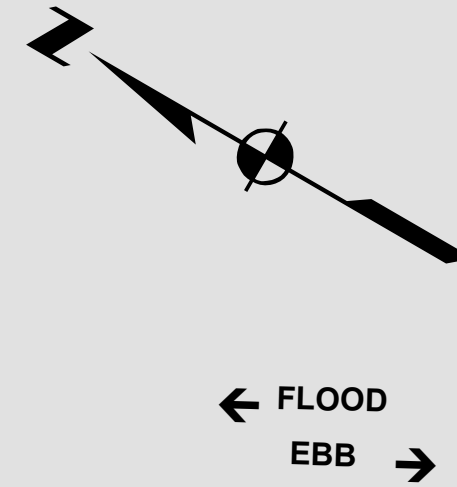
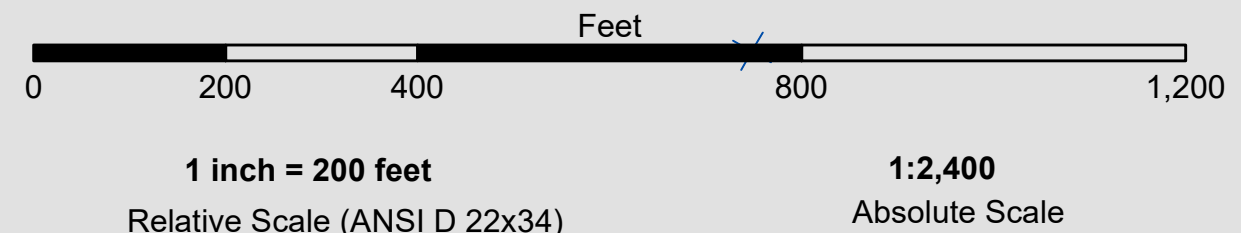
Sheet Reference Number
2 of 5



NAD 83 CHANNEL ANGLE POINT		
Angle Pt	X	Y
001	6006782.40	2212407.27
002	6006810.30	2218195.07
003	5998998.10	2230943.37
004	5996334.20	2232481.37
005	5993681.30	2232908.57
006	5990186.70	2233072.07

NAD 83 CHANNEL ANGLE POINT		
Angle Pt	X	Y
1	6006782.40	2212407.27
2	6006910.90	2218222.27
3	5999070.10	2231017.27
4	5996368.30	2232577.17
5	5993697.20	2233007.27
6	5990191.40	2233171.97
7	5990182.10	2232972.17
8	5993665.40	2232809.77
9	5996300.10	2232385.57
10	5998926.10	2230869.47
11	6006709.60	2218167.87
12	6006582.50	2212411.67

PRELIMINARY ISSUE
THIS PLAN ISSUED FOR
ADVANCE INFORMATION ONLY



Federal Navigation Channel	Beacon, General	Contours
Shoaling Area	Obstruction Point	-8
Placement Area	Navigation Buoy	-7
Anchorage Area	Navigation Buoy	-6
Wreck Area	Shoalest Sounding*	-5
Submerged Wreck		-4
Angle Point		

NOTES:
DRAWING NOT TO BE USED FOR NAVIGATION, ONLY CHANNEL CONDITION AT DATE OF SURVEY. THE LOCATION OF ALL NAVIGATION AIDS ARE BASED ON INFORMATION PROVIDED BY THE U.S. COAST GUARD. BUOY LOCATIONS REPRESENT THE POSITION OF THE SINKER ONLY.
SURVEYED BY THE CORPS OF ENGINEERS.
SOUNDINGS ARE TAKEN BY FATHOMETER AND ARE SHOWN TO THE NEAREST FOOT AND TENTHS OF A FOOT.
SOUNDINGS ARE BASED ON THE DATUM OF MEAN LOWER LOW WATER AT THE LOCALITY.

PLANE GRID, BEARING AND COORDINATES ARE BASED ON THE STATE OF CALIFORNIA COORDINATE SYSTEM, LAMBERT PROJECTION, ZONE III NAD 83, CALIFORNIA, AS DESCRIBED IN SPECIAL PUBLICATION NO. 253, PUBLISHED BY NATIONAL OCEAN SURVEY.
PROJECT DEPTH IS 8 FEET AT M.L.L.W.
SOUNDINGS ARE BASED ON THE TIDE GAUGE LOCATED AT THE CHANNEL MARKER 4, 10, 16
HORIZONTAL CONTROL: DESIGNATION, SOURCE, XYZ
PRIMARY: RTK GPS VIA VRS NETWORK
SECONDARY: COAST GUARD D-BEACON
VERTICAL CONTROL: BENCHMARK, MMLW ELEV., AGENCY
MON. "UNSTAMPED" USC&GS DISK., SW CONCRETE PIER OF R/R DRAWBRIDGE OVER CREEK., ELEV. 8.86 MLLW AND NAVD 88 DATUM.

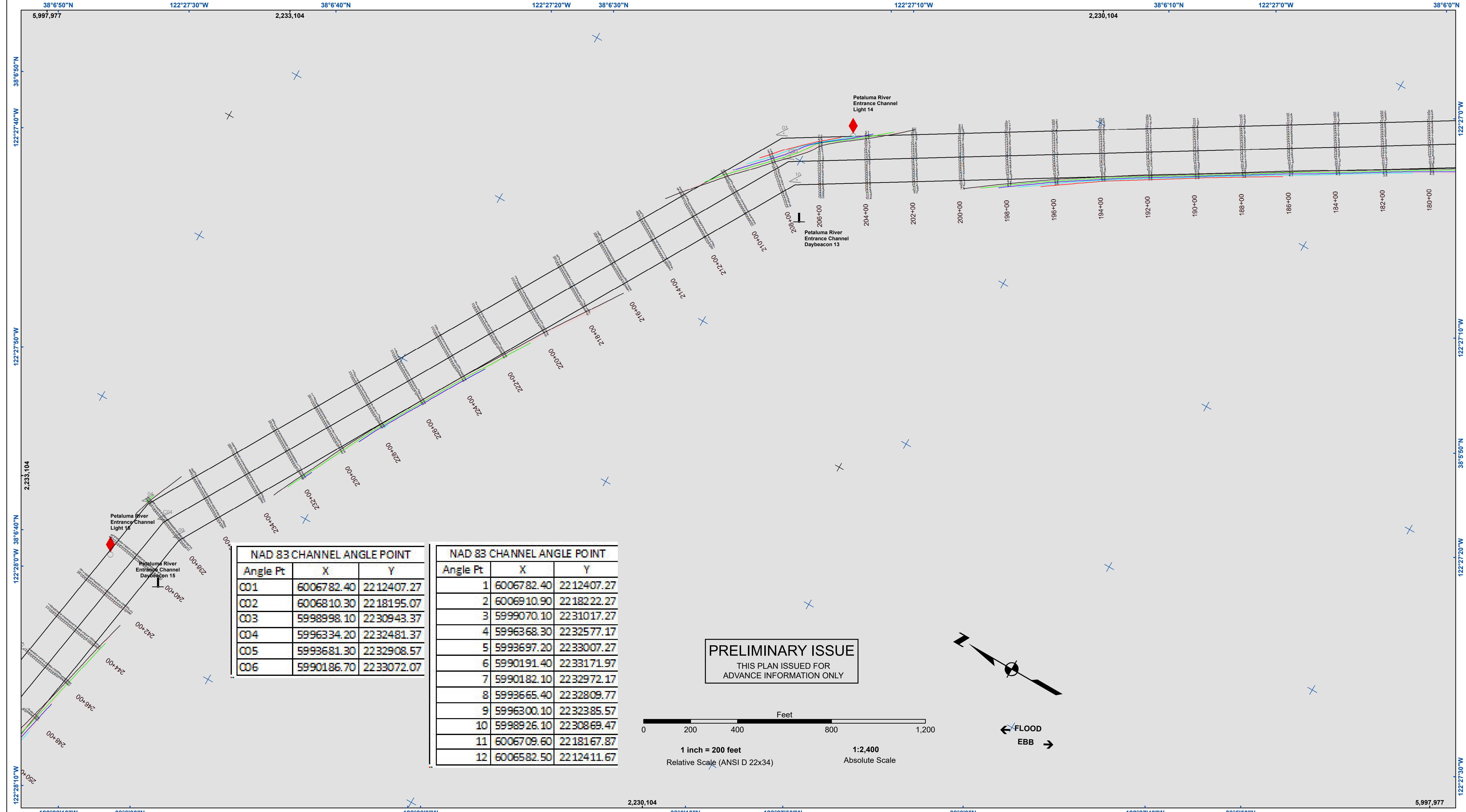


DISCLAIMER
The United States Government furnishes this information for the general information of the recipient. The data represents the results of data collected by the United States Government and is not intended for use in any other manner than that intended by the United States Government. The user is responsible for the results of any application of the data for other than its intended purpose. The United States Government makes no warranty, expressed or implied, concerning the accuracy, completeness, reliability, usability or timeliness of the information. The user is responsible for the results of any application of the data for other than its intended purpose. These data belong to the Government. Therefore the recipient may not transfer these data to others without also transferring this disclaimer.

Chart Date:	Mar 26, 2018
Surveyed By:	LT COLONEL C.E. DISTRICT ENGINEER TRAVIS J. RAYFIELD
Plotted By:	PDT
Designed by:	
Drawn by:	PDT
Checked By:	PDT
Approved:	Chief, Construction Branch

SONOMA COUNTY
PETALUMA RIVER
CONDITION SURVEY
19 DECEMBER 2017

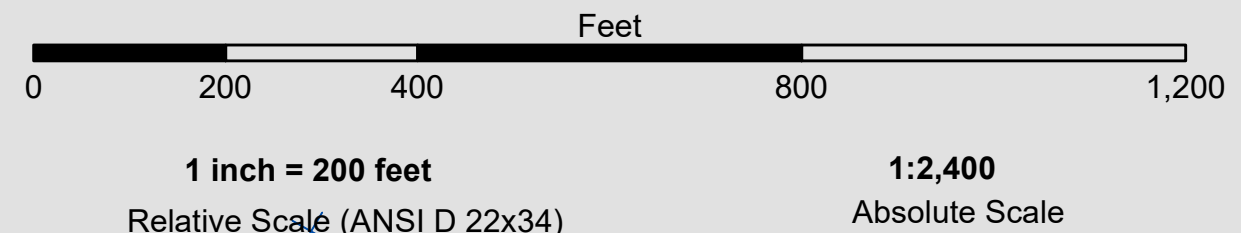
Sheet Reference Number
3 of 5



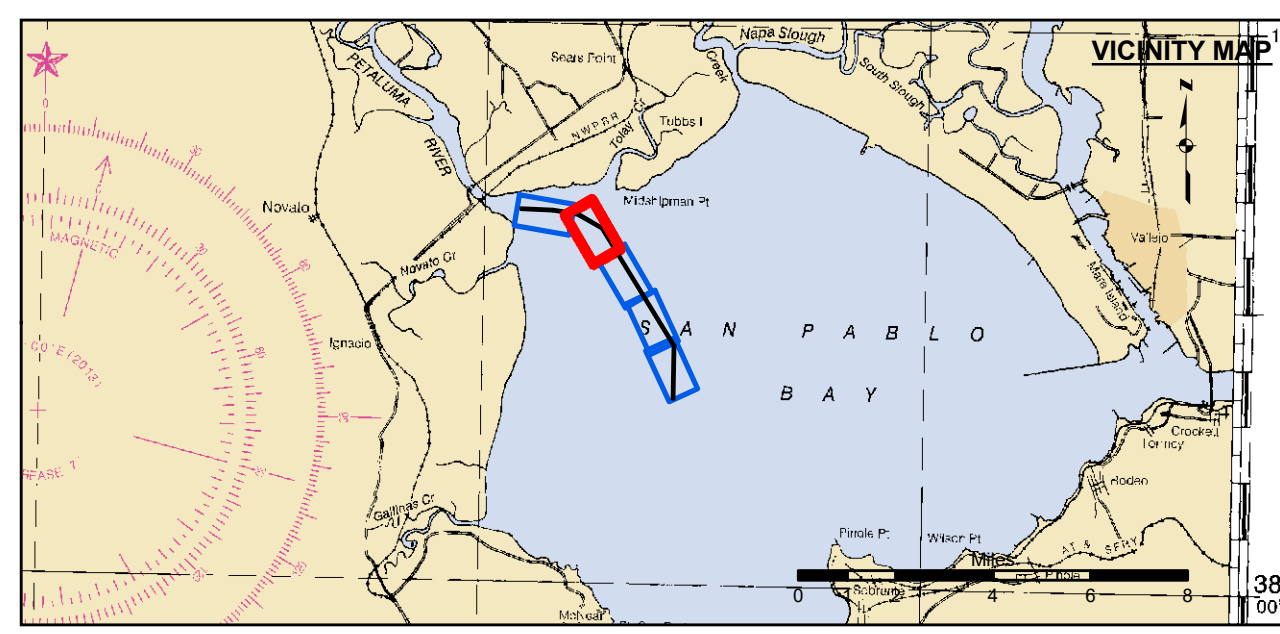
Angle Pt	X	Y
001	6006782.40	2212407.27
002	6006810.30	2218195.07
003	5998998.10	2230943.37
004	5996334.20	2232481.37
005	5993681.30	2232908.57
006	5990186.70	2233072.07

Angle Pt	X	Y
1	6006782.40	2212407.27
2	6006910.90	2218222.27
3	5999070.10	2231017.27
4	5996368.30	2232577.17
5	5993697.20	2233007.27
6	5990191.40	2233171.97
7	5990182.10	2232972.17
8	5993665.40	2232809.77
9	5996300.10	2232385.57
10	5998926.10	2230869.47
11	6006709.60	2218167.87
12	6006582.50	2212411.67

PRELIMINARY ISSUE
THIS PLAN ISSUED FOR
ADVANCE INFORMATION ONLY



← FLOOD
EBB →



Federal Navigation Channel	Beacon, General	Contours
Shoaling Area	Obstruction Point	-8
Placement Area	Navigation Buoy	-7
Anchorage Area	Navigation Buoy	-6
Wreck Area	Shoalest Sounding*	-5
Submerged Wreck		-4
Angle Point		

NOTES:
DRAWING NOT TO BE USED FOR NAVIGATION, ONLY CHANNEL CONDITION AT DATE OF SURVEY. THE LOCATION OF ALL NAVIGATION AIDS ARE BASED ON INFORMATION PROVIDED BY THE U.S. COAST GUARD. BUOY LOCATIONS REPRESENT THE POSITION OF THE SINKER ONLY.
SURVEYED BY THE CORPS OF ENGINEERS.
SOUNDINGS ARE TAKEN BY FATHOMETER AND ARE SHOWN TO THE NEAREST FOOT AND TENTHS OF A FOOT.
SOUNDINGS ARE BASED ON THE DATUM OF MEAN LOWER LOW WATER AT THE LOCALITY.

PLANE GRID, BEARING AND COORDINATES ARE BASED ON THE STATE OF CALIFORNIA COORDINATE SYSTEM, LAMBERT PROJECTION, ZONE III NAD 83, CALIFORNIA, AS DESCRIBED IN SPECIAL PUBLICATION NO. 253, PUBLISHED BY NATIONAL OCEAN SURVEY.
PROJECT DEPTH IS 8 FEET AT M.L.L.W.
SOUNDINGS ARE BASED ON THE TIDE GAUGE LOCATED AT THE CHANNEL MARKER 4, 10, 16
HORIZONTAL CONTROL: DESIGNATION, SOURCE, XYZ
PRIMARY: RTK GPS VIA VRS NETWORK
SECONDARY: COAST GUARD D-BEACON
VERTICAL CONTROL: BENCHMARK, MMLW ELEV., AGENCY
MON. "UNSTAMPED" USC&GS DISK., SW CONCRETE PIER OF R/R DRAWBRIDGE OVER CREEK., ELEV. 8.86 MLLW AND NAVD 88 DATUM.

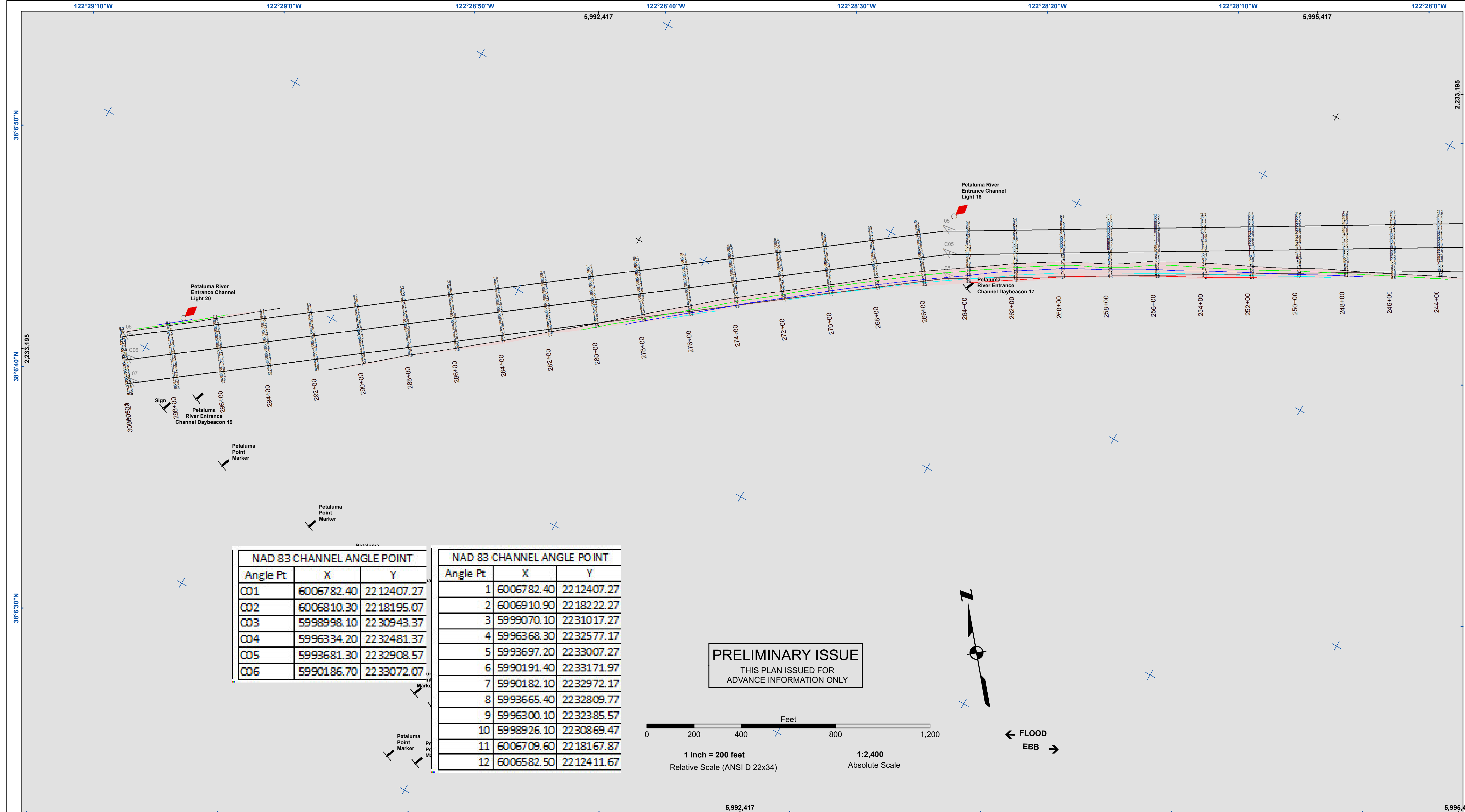
US Army Corps of Engineers
San Francisco District
1455 Market Street
San Francisco, CA 94103

DISCLAIMER
The United States Government furnishes this information for the general information of the recipient. The data represents the results of data collected by the United States Government and is not intended for use in any other manner than that intended by the United States Government. The recipient shall not be held liable for any damage or loss resulting from the use of this information. The recipient shall not be held liable for any damage or loss resulting from the use of this information. The recipient shall not be held liable for any damage or loss resulting from the use of this information.

Prepared Under the Direction of TRAVIS J. RAYFIELD LT Colonel, C.E. District Engineer	Chart Date: Mar 26, 2018
Submitted: PDT Hydro Survey Team Leader	Designed by:
Recommended: Chief, Hydro Survey Section	Drawn by: PDT
Approved: Chief, Construction Branch	Checked by: PDT

SONOMA COUNTY
PETALUMA RIVER
CONDITION SURVEY
19 DECEMBER 2017

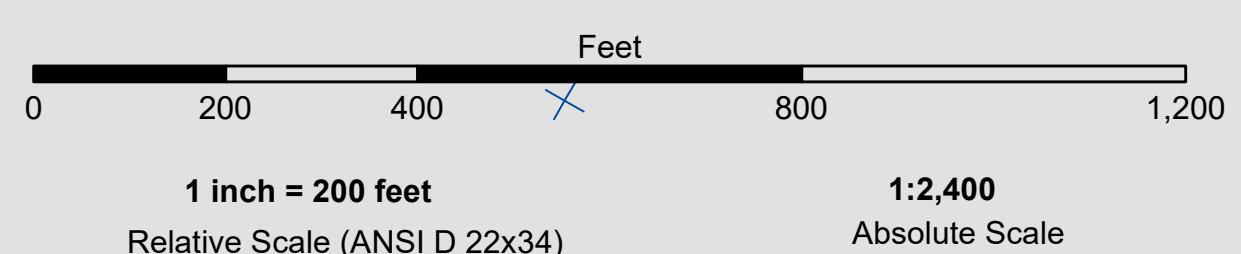
Sheet Reference Number
4 of 5



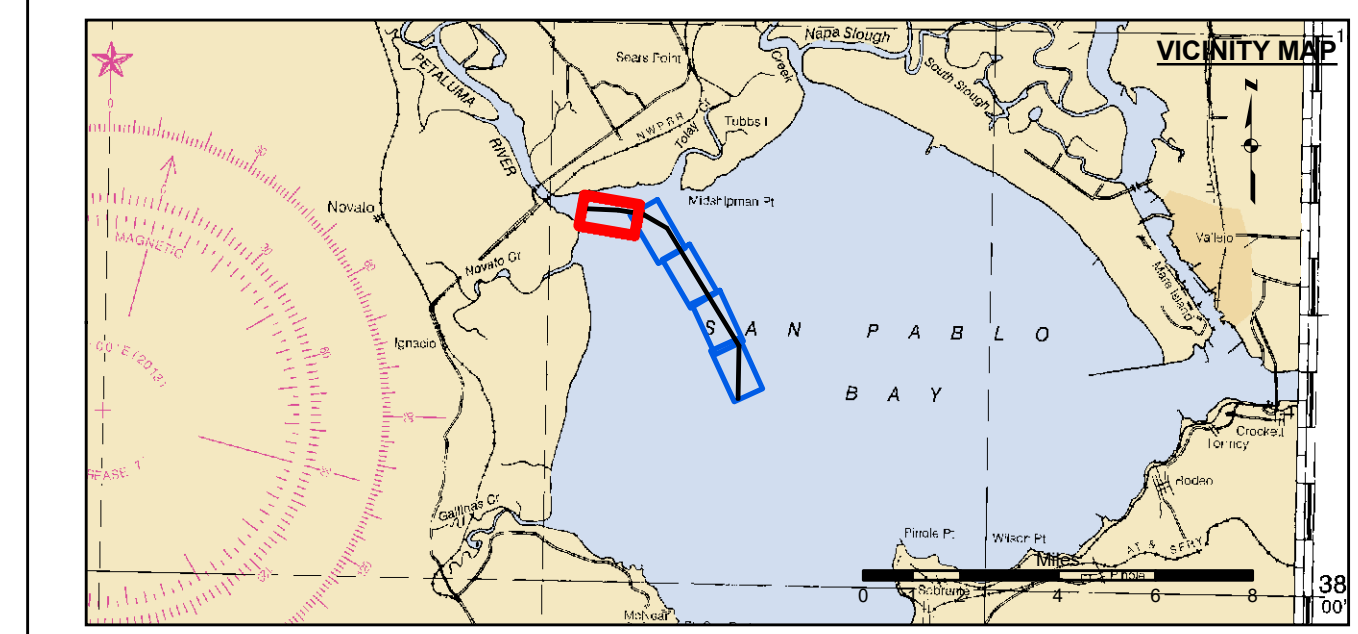
NAD 83 CHANNEL ANGLE POINT		
Angle Pt	X	Y
001	6006782.40	2212407.27
002	6006810.30	2218195.07
003	5998998.10	2230943.37
004	5996334.20	2232481.37
005	5993681.30	2232908.57
006	5990186.70	2233072.07

NAD 83 CHANNEL ANGLE POINT		
Angle Pt	X	Y
1	6006782.40	2212407.27
2	6006910.90	2218222.27
3	5999070.10	2231017.27
4	5996368.30	2232577.17
5	5993697.20	2233007.27
6	5990191.40	2233171.97
7	5990182.10	2232972.17
8	5993665.40	2232809.77
9	5996300.10	2232385.57
10	5998926.10	2230869.47
11	6006709.60	2218167.87
12	6006582.50	2212411.67

PRELIMINARY ISSUE
THIS PLAN ISSUED FOR
ADVANCE INFORMATION ONLY



← FLOOD
EBB →



Federal Navigation Channel	Beacon, General	Contours
Shoaling Area	Obstruction Point	
Placement Area	Navigation Buoy	-8
Anchorage Area	Navigation Buoy	-7
Wreck Area	Shoalest Sounding*	-6
Submerged Wreck		-5
Angle Point		-4

NOTES:
DRAWING NOT TO BE USED FOR NAVIGATION, ONLY CHANNEL CONDITION AT DATE OF SURVEY.
THE LOCATION OF ALL NAVIGATION AIDS ARE BASED ON INFORMATION PROVIDED BY THE U.S. COAST GUARD. BUOY LOCATIONS REPRESENT THE POSITION OF THE SINKER ONLY.
SURVEYED BY THE CORPS OF ENGINEERS.
SOUNDINGS ARE TAKEN BY FATHOMETER AND ARE SHOWN TO THE NEAREST FOOT AND TENTHS OF A FOOT.
SOUNDINGS ARE BASED ON THE DATUM OF MEAN LOWER LOW WATER AT THE LOCALITY.

PLANE GRID, BEARING AND COORDINATES ARE BASED ON THE STATE OF CALIFORNIA COORDINATE SYSTEM, LAMBERT PROJECTION, ZONE III NAD 83, CALIFORNIA, AS DESCRIBED IN SPECIAL PUBLICATION NO. 253, PUBLISHED BY NATIONAL OCEAN SURVEY.
PROJECT DEPTH IS 8 FEET AT M.L.L.W.
SOUNDINGS ARE BASED ON THE TIDE GAUGE LOCATED AT THE CHANNEL MARKER 4, 10, 16
HORIZONTAL CONTROL: DESIGNATION, SOURCE, XYZ
PRIMARY: RTK GPS VIA VRS NETWORK
SECONDARY: COAST GUARD D-BEACON
VERTICAL CONTROL: BENCHMARK, MMLW ELEV., AGENCY
MON. "UNSTAMPED" USC&GS DISK., SW CONCRETE PIER OF R/R DRAWBRIDGE OVER CREEK., ELEV. 8.86 MLLW AND NAVD 88 DATUM.

US Army Corps of Engineers
San Francisco District
1455 Market Street
San Francisco, CA 94103

DISCLAIMER
The United States Government furnishes this information as a service to the public. It is not intended to be used for any purpose other than that for which it was prepared. The user is responsible for the results of any application of the data for other than its intended purpose. The user is responsible for the results of any application of the data for other than its intended purpose. The user is responsible for the results of any application of the data for other than its intended purpose.

Prepared Under the Direction of LT COLONEL C.E. DISTRICT ENGINEER TRAVIS J. RAYFIELD	Chart Date: Mar 26, 2018
Submitted: PDT	Designed by:
Recommended: Hydro Survey Team Leader	Drawn by: PDT
Approved: Chief, Hydro Survey Section	Checked by: PDT
Approved: Chief, Construction Branch	

SONOMA COUNTY
PETALUMA RIVER
CONDITION SURVEY
19 DECEMBER 2017

Sheet Reference Number
5 of 5