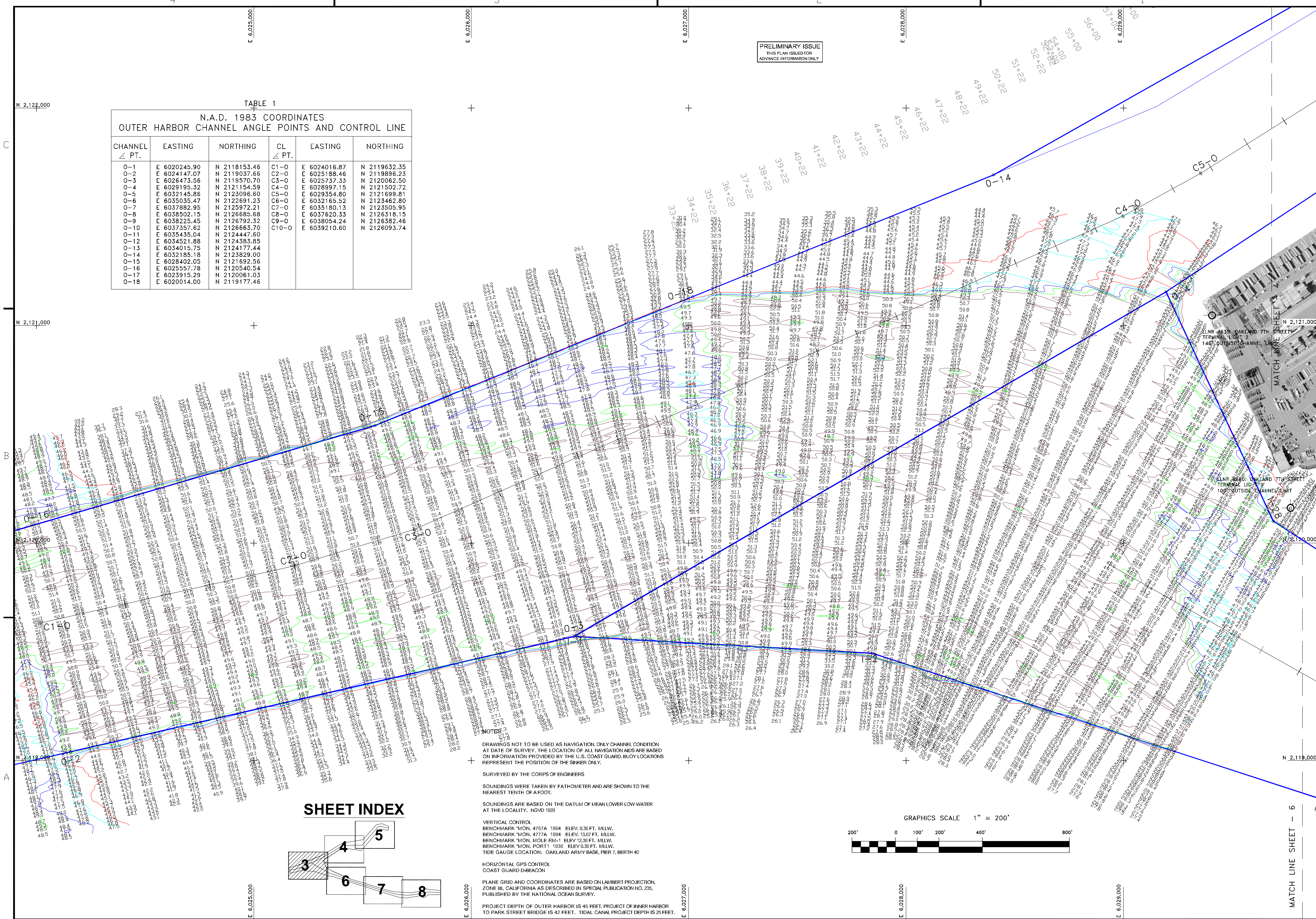


TABLE 1
N.A.D. 1983 COORDINATES
OUTER HARBOR CHANNEL ANGLE POINTS AND CONTROL LINE

CHANNEL ∠ PT.	EASTING	NORTHING	CL ∠ PT.	EASTING	NORTHING
O-1	E 6020245.90	N 2118153.46	C1-0	E 6024016.87	N 2119632.35
O-2	E 6024147.07	N 2119037.66	C2-0	E 6025188.46	N 2119896.23
O-3	E 6026473.56	N 2119570.70	C3-0	E 6025737.33	N 2120062.50
O-4	E 6029195.32	N 2121154.59	C4-0	E 6028997.15	N 2121502.72
O-5	E 6032145.86	N 2123096.60	C5-0	E 6029354.80	N 2121699.81
O-6	E 6035035.47	N 2122691.23	C6-0	E 6032165.52	N 2123462.80
O-7	E 6037882.95	N 2125972.21	C7-0	E 6035180.13	N 2123505.95
O-8	E 6038502.15	N 2126685.68	C8-0	E 6037620.33	N 2126318.15
O-9	E 6038225.45	N 2126792.32	C9-0	E 6038054.24	N 2126382.46
O-10	E 6037357.62	N 2126663.70	C10-0	E 6039210.60	N 2126093.74
O-11	E 6035435.04	N 2124447.60			
O-12	E 6034521.88	N 2124383.85			
O-13	E 6034015.75	N 2124177.44			
O-14	E 6032185.18	N 2123829.00			
O-15	E 6028402.05	N 2121692.56			
O-16	E 6025557.78	N 2120540.54			
O-17	E 6023915.29	N 2120061.03			
O-18	E 6020014.00	N 2119177.46			



NOTES:

DRAWINGS NOT TO BE USED AS NAVIGATION. ONLY CHANNEL CONDITION AT DATE OF SURVEY. THE LOCATION OF ALL NAVIGATION AIDS ARE BASED ON INFORMATION PROVIDED BY THE U.S. COAST GUARD. BUOY LOCATIONS REPRESENT THE POSITION OF THE SINKER ONLY.

SURVEYED BY THE CORPS OF ENGINEERS

SOUNDINGS WERE TAKEN BY FATHOMETER AND ARE SHOWN TO THE NEAREST TENTH OF A FOOT.

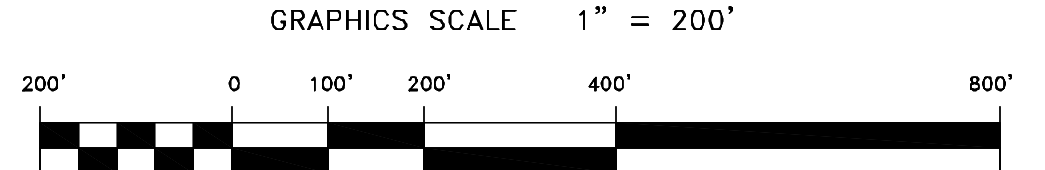
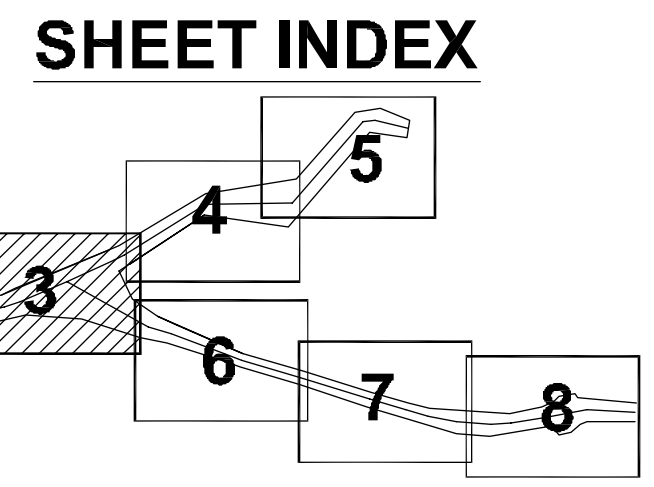
SOUNDINGS ARE BASED ON THE DATUM OF MEAN LOWER LOW WATER AT THE LOCALITY. NGVD 1929

VERTICAL CONTROL
BENCHMARK 1/MON. 4757A 1954 ELEV. 3.36 FT. MLLW.
BENCHMARK 1/MON. 4777A 1994 ELEV. 13.57 FT. MLLW.
BENCHMARK 1/MON. MOLE RM-1 ELEV. 12.36 FT. MLLW.
BENCHMARK 1/MON. PORT 1 1936 ELEV. 3.36 FT. MLLW.
TIDE GAUGE LOCATION: OAKLAND ARMY BASE, PIER 7, BERTH 40

HORIZONTAL GPS CONTROL
COAST GUARD D-BEACON

PLANE GRID AND COORDINATES ARE BASED ON LAMBERT PROJECTION, ZONE III, CALIFORNIA AS DESCRIBED IN SPECIAL PUBLICATION NO. 235, PUBLISHED BY THE NATIONAL OCEAN SURVEY.

PROJECT DEPTH OF OUTER HARBOR IS 46 FEET. PROJECT OF INNER HARBOR TO PARK STREET BRIDGE IS 42 FEET. TIDAL CANAL PROJECT DEPTH IS 25 FEET.



US Army Corps of Engineers
San Francisco District
333 Market Street
San Francisco, CA 94105

<p>DESIGNED BY: MC Checked by: TYW DATE: 03/10/2007</p> <p>APPROVAL RECOMMENDED: Chief, Technical Support Section APPROVED:</p>	<p>DRAWN BY: EWC SHEET NO. 3 OF 8 DATE: 03/10/2007</p> <p>PREPARED UNDER THE DIRECTION OF: CRAIG W. KILEY LT. COLONEL, C.E., DISTRICT ENGINEER</p>
---	--

ALAMEDA COUNTY
OAKLAND HARBOR
OAKLAND INNER/OUTER HARBOR
CONDITION SURVEY
01&05 FEBRUARY 2007

Sheet reference number
C3