

PRELIMINARY ISSUE
 THIS PLAN ISSUED FOR
 ADVANCE INFORMATION ONLY

Mark	Description	Date	Appr.

DESIGNED BY:	CHECKED BY:	DRAWN BY:
MC	TW	EVC
Hydro Survey Team Leader		
APPROVAL RECOMMENDED:	SHEET NO.	DRAWING NO.
2/4/2009	6 OF 8	2 XXX
Chief, Technical Support Section	PREPARED UNDER THE DIRECTION OF	
APPROVED:	LAURENCE M. FARRELL	
Chief, Construction Branch	LT. COLONEL, C.E., DISTRICT ENGINEER	

ALAMEDA COUNTY
 OAKLAND HARBOR
 OUTER HARBOR
 CONDITION SURVEY
 23 & 27 FEBRUARY 2009

Sheet reference number
C6

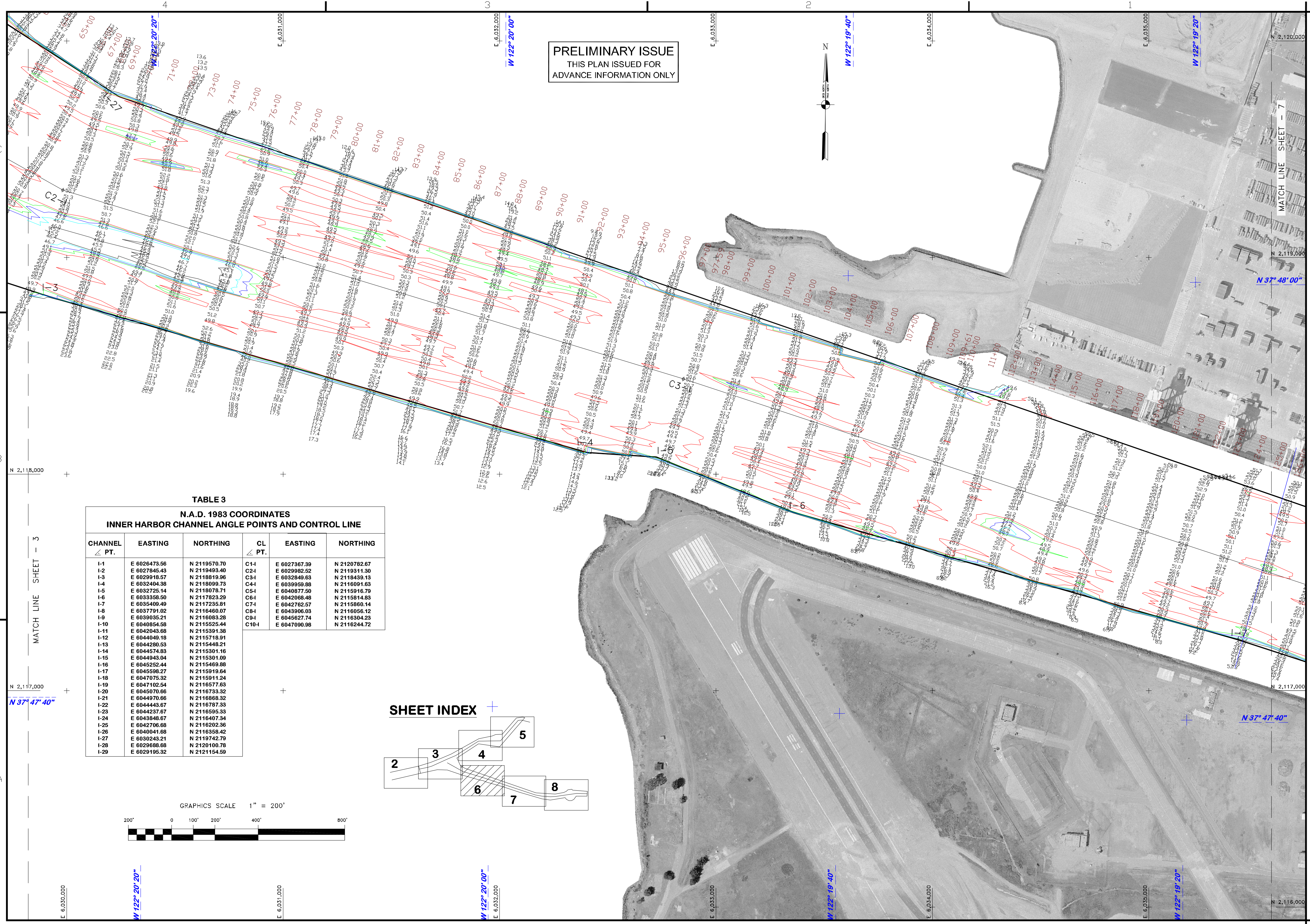


TABLE 3
N.A.D. 1983 COORDINATES
INNER HARBOR CHANNEL ANGLE POINTS AND CONTROL LINE

CHANNEL ∠ PT.	EASTING	NORTHING	CL ∠ PT.	EASTING	NORTHING
I-1	E 6026473.56	N 2119570.70	C1-1	E 6027367.39	N 2120782.67
I-2	E 6027845.43	N 2119493.40	C2-1	E 6029982.52	N 2119311.30
I-3	E 6029918.57	N 2118819.96	C3-1	E 6032849.63	N 2118439.13
I-4	E 6032404.38	N 2118099.73	C4-1	E 6039959.88	N 2116091.63
I-5	E 6032725.14	N 2118078.71	C5-1	E 6040877.50	N 2115916.79
I-6	E 6033358.50	N 2117823.29	C6-1	E 6042068.48	N 2115814.83
I-7	E 6035409.49	N 2117235.81	C7-1	E 6042762.57	N 2115860.14
I-8	E 6037791.02	N 2116460.07	C8-1	E 6043906.09	N 2116055.12
I-9	E 6039035.21	N 2116083.28	C9-1	E 6045627.74	N 2116304.23
I-10	E 6040854.58	N 2115525.44	C10-1	E 6047090.98	N 2116244.72
I-11	E 6042043.68	N 2115391.38			
I-12	E 6044049.18	N 2115718.91			
I-13	E 6044280.53	N 2115448.21			
I-14	E 6044574.83	N 2115301.16			
I-15	E 6044943.04	N 2115301.09			
I-16	E 6045252.44	N 2115469.88			
I-17	E 6045598.27	N 2115919.84			
I-18	E 6047075.32	N 2115911.24			
I-19	E 6047102.54	N 2116577.63			
I-20	E 6045070.66	N 2116733.32			
I-21	E 6044970.66	N 2116868.32			
I-22	E 6044443.67	N 2116787.33			
I-23	E 6044237.67	N 2116595.33			
I-24	E 6043848.67	N 2116407.34			
I-25	E 6042706.68	N 2116202.36			
I-26	E 6040941.68	N 2116358.42			
I-27	E 6030243.21	N 2119742.79			
I-28	E 6029688.68	N 2120100.78			
I-29	E 6029195.32	N 2121154.59			

