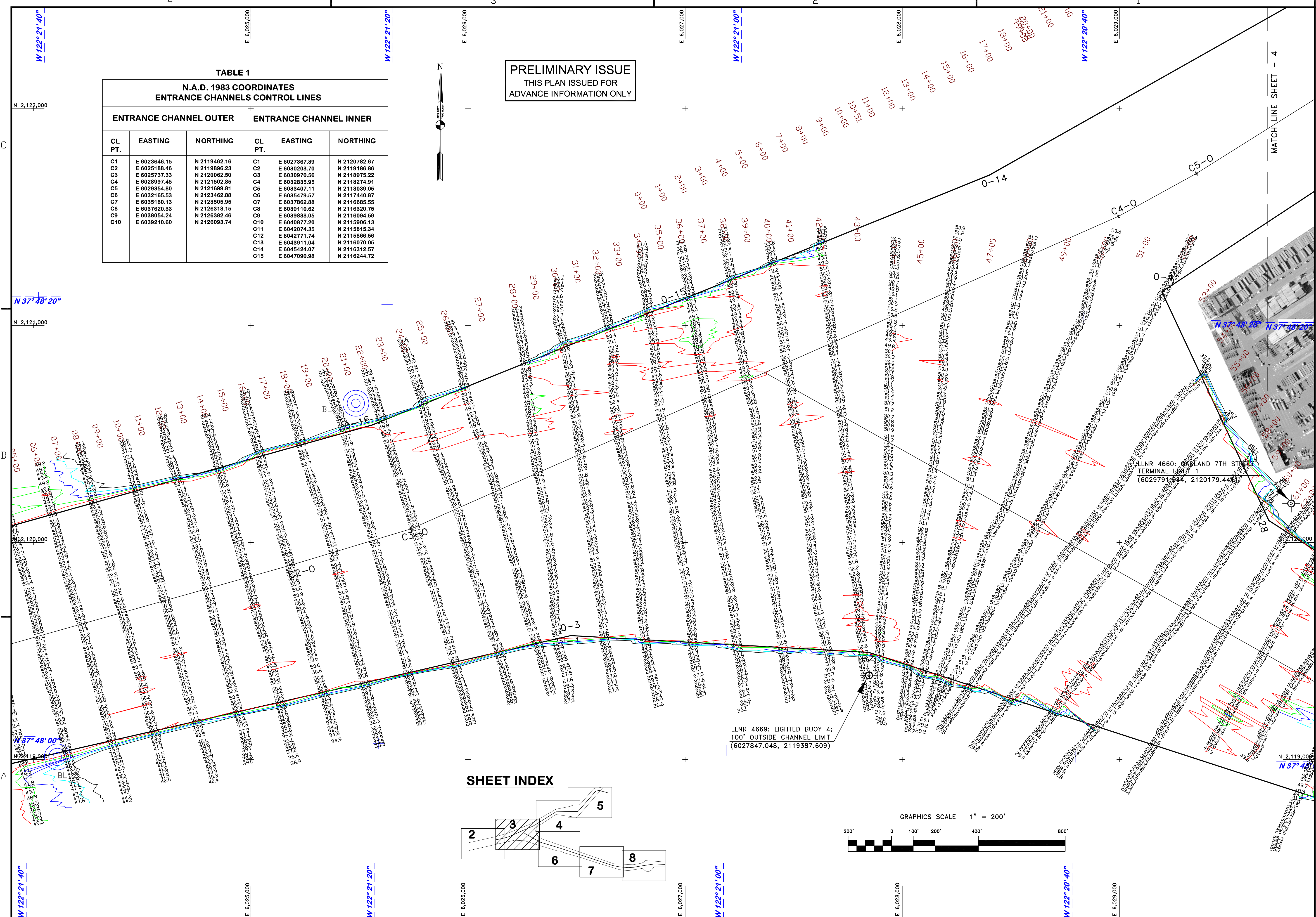


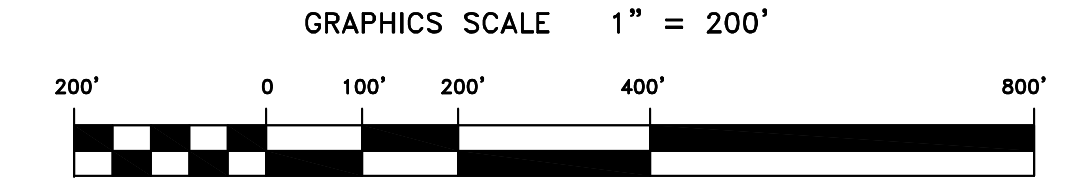
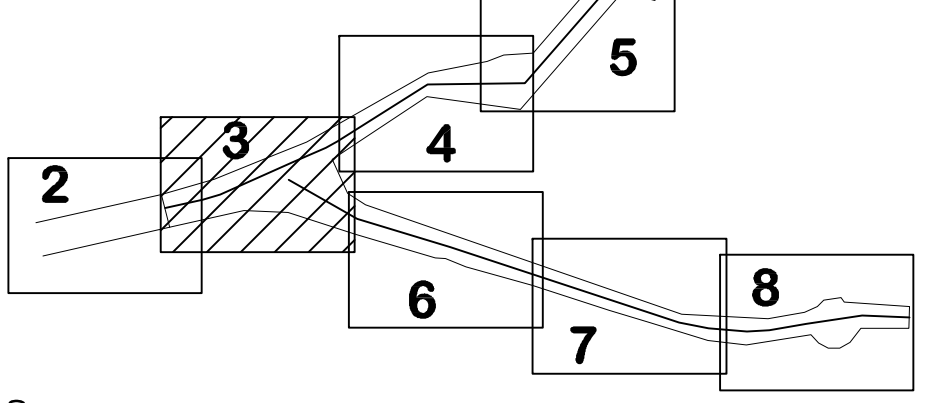
**PRELIMINARY ISSUE**  
THIS PLAN ISSUED FOR  
ADVANCE INFORMATION ONLY

**TABLE 1**  
N.A.D. 1983 COORDINATES  
ENTRANCE CHANNELS CONTROL LINES

| ENTRANCE CHANNEL OUTER |              |              | ENTRANCE CHANNEL INNER |              |              |
|------------------------|--------------|--------------|------------------------|--------------|--------------|
| CL PT.                 | EASTING      | NORTHING     | CL PT.                 | EASTING      | NORTHING     |
| C1                     | E 6023646.15 | N 2119462.16 | C1                     | E 6027367.39 | N 2120782.67 |
| C2                     | E 6025188.46 | N 2119389.23 | C2                     | E 6030203.70 | N 2119186.86 |
| C3                     | E 6025737.33 | N 2120062.50 | C3                     | E 6030870.56 | N 2118975.22 |
| C4                     | E 6028997.45 | N 2121502.85 | C4                     | E 6032835.95 | N 2118274.91 |
| C5                     | E 6029354.80 | N 2121699.81 | C5                     | E 6033407.11 | N 2118039.05 |
| C6                     | E 6032165.53 | N 2123462.88 | C6                     | E 6035479.57 | N 2117440.87 |
| C7                     | E 6035180.13 | N 2123505.95 | C7                     | E 6037862.88 | N 2116685.55 |
| C8                     | E 6037620.33 | N 2126318.15 | C8                     | E 6039110.62 | N 2116320.75 |
| C9                     | E 6038054.24 | N 2126382.46 | C9                     | E 6039888.05 | N 2116094.59 |
| C10                    | E 6039210.60 | N 2126093.74 | C10                    | E 6040877.20 | N 2115906.13 |
|                        |              |              | C11                    | E 6042074.35 | N 2115815.34 |
|                        |              |              | C12                    | E 6042771.74 | N 2115868.56 |
|                        |              |              | C13                    | E 6043911.04 | N 2116070.05 |
|                        |              |              | C14                    | E 6045424.07 | N 2116312.57 |
|                        |              |              | C15                    | E 6047090.98 | N 2116244.72 |



**SHEET INDEX**



US Army Corps of Engineers  
San Francisco District  
1455 Market Street  
San Francisco, CA 94103

| Mark | Description | Date | Appr. |
|------|-------------|------|-------|
|      |             |      |       |
|      |             |      |       |
|      |             |      |       |
|      |             |      |       |
|      |             |      |       |
|      |             |      |       |

|                       |                                  |                                  |                                      |        |
|-----------------------|----------------------------------|----------------------------------|--------------------------------------|--------|
| SUBMITTED:            | MC                               | DESIGNED BY:                     | TVW                                  | EWC    |
|                       | Hydro Survey Team Leader         | DATE:                            | 2/4/2009                             | 3 OF 8 |
| APPROVAL RECOMMENDED: | CHIEF, Technical Support Section | CHECKED BY:                      | 2                                    | XXX    |
| APPROVED:             | LAURENCE M. FARRELL              | DESIGNED UNDER THE DIRECTION OF: | LAURENCE M. FARRELL                  |        |
|                       |                                  |                                  | LT. COLONEL, C.E., DISTRICT ENGINEER |        |

ALAMEDA COUNTY  
OAKLAND HARBOR  
ENTRANCE/INNER CHANNEL  
CONDITION SURVEY  
24-25 FEBRUARY 2009

Sheet reference number  
**C3**