

PRELIMINARY ISSUE
 THIS PLAN ISSUED FOR
 ADVANCE INFORMATION ONLY

Mark	Description	Date	Appr.

DESIGNED BY:	CHECKED BY:	DRAWN BY:
PDT	PDT	PDT
Hydro Survey Team Leader	Hydro Survey Team Leader	Hydro Survey Team Leader
DATE:	SHEET NO.	DRAWING NO.
5/31/2012	6 OF 8	2 XXX
APPROVED:	PREPARED UNDER THE DIRECTION OF:	
Chief, Geomatics Section	TORREY A. DICIRO	
Chief, Construction Branch	LT. COLONEL, C.E., DISTRICT ENGINEER	

ALAMEDA COUNTY
 OAKLAND INNER HARBOR
 POSTDREDGE SURVEY
 KNOCK DOWN COMPOSITE SURVEY
 31 MAY 2012

Sheet reference number
C6

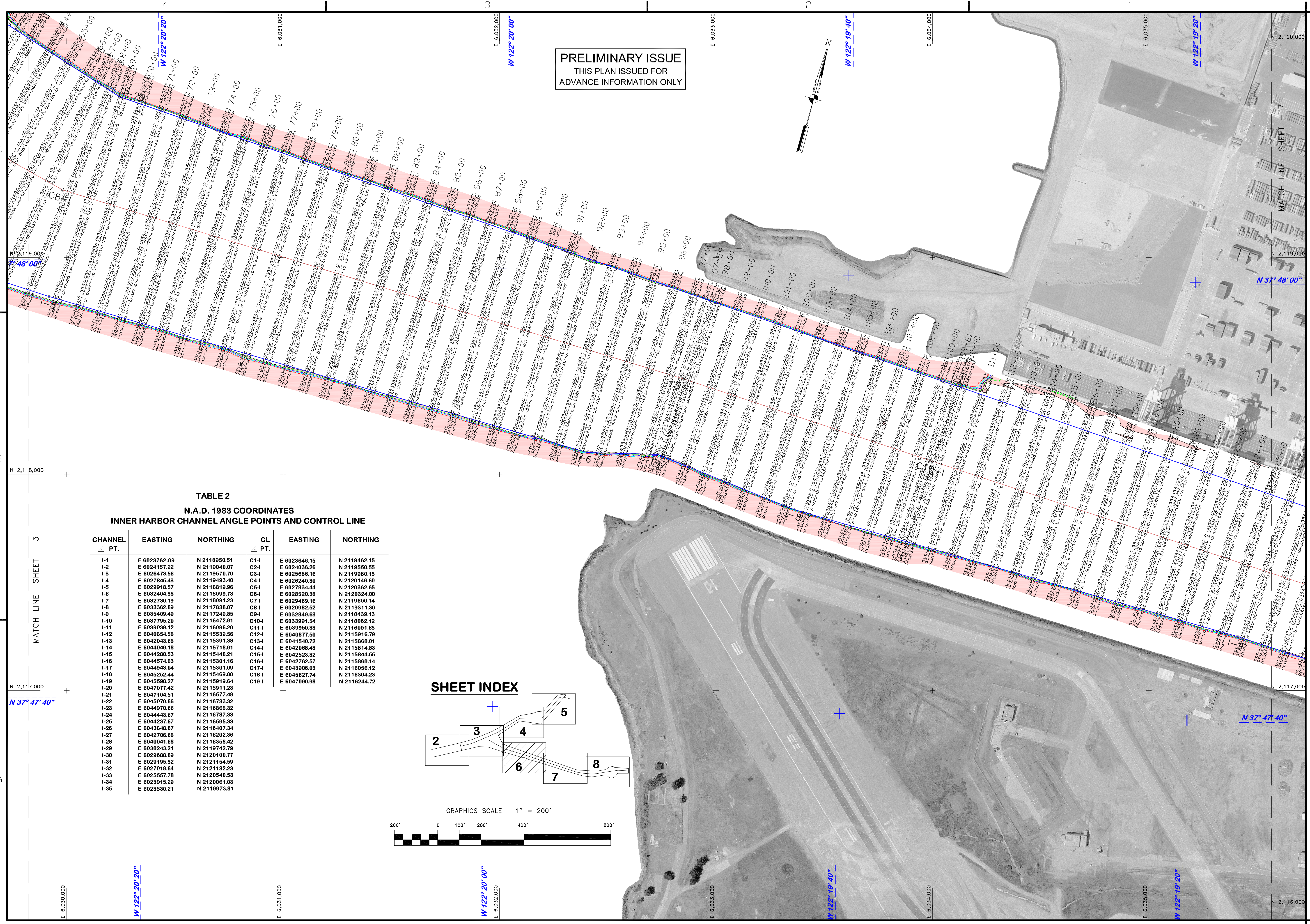


TABLE 2
N.A.D. 1983 COORDINATES
INNER HARBOR CHANNEL ANGLE POINTS AND CONTROL LINE

CHANNEL PT.	EASTING	NORTHING	CL PT.	EASTING	NORTHING
I-1	E 6023762.09	N 2118950.51	C1-1	E 6023646.15	N 2119462.15
I-2	E 6024157.22	N 2119040.07	C2-1	E 6024036.26	N 2119550.55
I-3	E 6026473.56	N 2119570.70	C3-1	E 6026586.16	N 2119980.13
I-4	E 6027845.43	N 2119493.40	C4-1	E 6026240.30	N 2120146.80
I-5	E 6029918.57	N 2118819.96	C5-1	E 6027834.44	N 2120362.65
I-6	E 6032404.38	N 2118099.73	C6-1	E 6028520.38	N 2120324.00
I-7	E 6032730.19	N 2118091.23	C7-1	E 6029469.16	N 2119600.14
I-8	E 6033362.89	N 2117836.07	C8-1	E 6029982.52	N 2119311.30
I-9	E 6035409.49	N 2117249.85	C9-1	E 6032849.63	N 2118439.13
I-10	E 6037795.20	N 2116472.91	C10-1	E 6033991.54	N 2118062.12
I-11	E 6039039.12	N 2116096.20	C11-1	E 6039959.88	N 2116091.63
I-12	E 6040954.58	N 2115539.56	C12-1	E 6040877.50	N 2115916.79
I-13	E 6042643.88	N 2115391.38	C13-1	E 6041540.72	N 2115860.01
I-14	E 6044049.18	N 2115718.91	C14-1	E 6042058.48	N 2115814.83
I-15	E 6044280.53	N 2115448.21	C15-1	E 6042523.82	N 2115844.55
I-16	E 6044574.83	N 2115301.16	C16-1	E 6042762.57	N 2115860.14
I-17	E 6044943.04	N 2115301.09	C17-1	E 6043906.03	N 2116056.12
I-18	E 6045252.44	N 2115469.88	C18-1	E 6045627.74	N 2116304.23
I-19	E 6045598.27	N 2115919.64	C19-1	E 6047090.98	N 2116244.72
I-20	E 6047077.42	N 2115911.23			
I-21	E 6047104.51	N 2116577.48			
I-22	E 6045070.86	N 2116733.32			
I-23	E 6044970.66	N 2116868.32			
I-24	E 6044443.67	N 2116787.33			
I-25	E 6044237.67	N 2116595.33			
I-26	E 6043848.67	N 2116407.34			
I-27	E 6042706.68	N 2116202.36			
I-28	E 6040041.68	N 2116358.42			
I-29	E 6030243.21	N 2119742.79			
I-30	E 6029688.89	N 2120100.77			
I-31	E 6029195.32	N 2121154.59			
I-32	E 6027018.64	N 2121132.23			
I-33	E 6025557.78	N 2120540.53			
I-34	E 6023915.29	N 2120061.03			
I-35	E 6023530.21	N 2119973.81			

