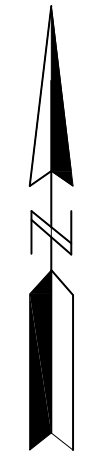
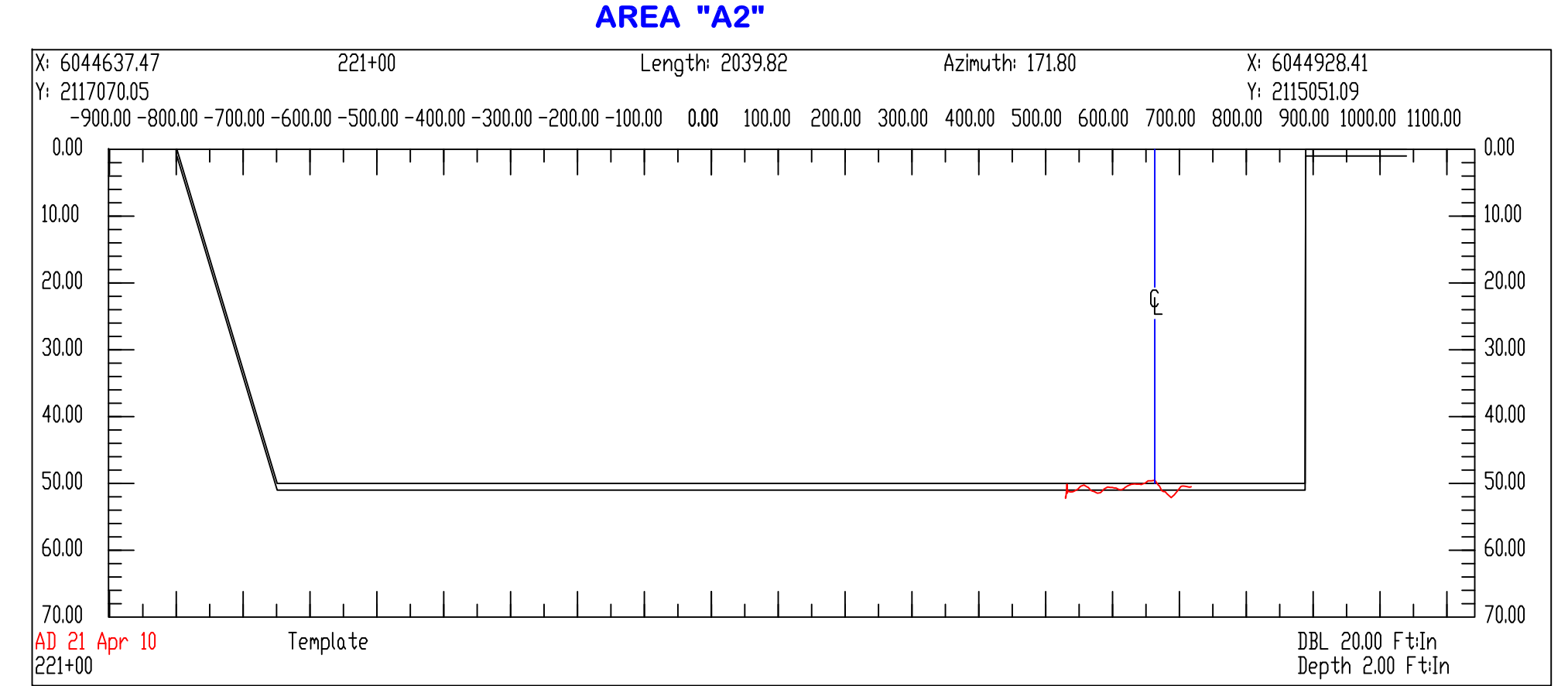
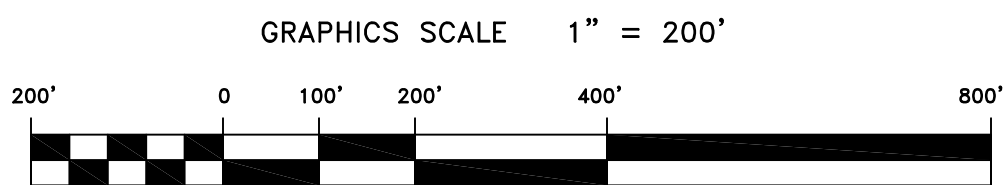
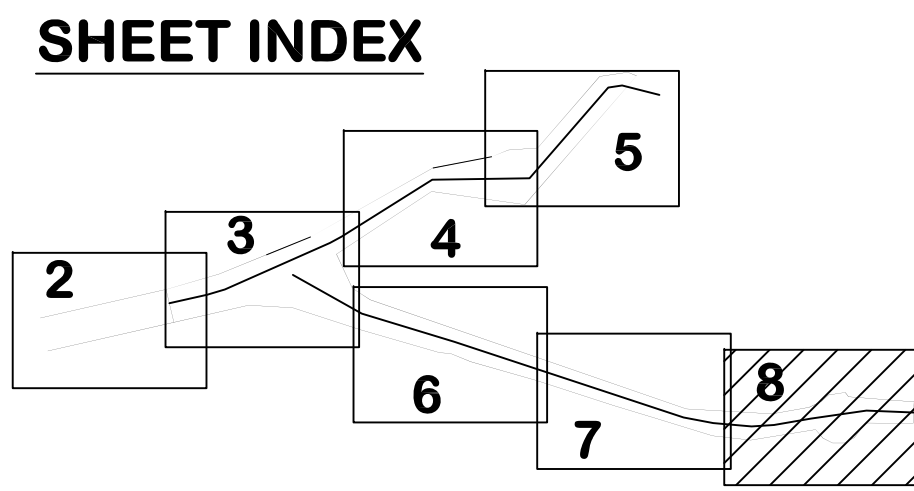
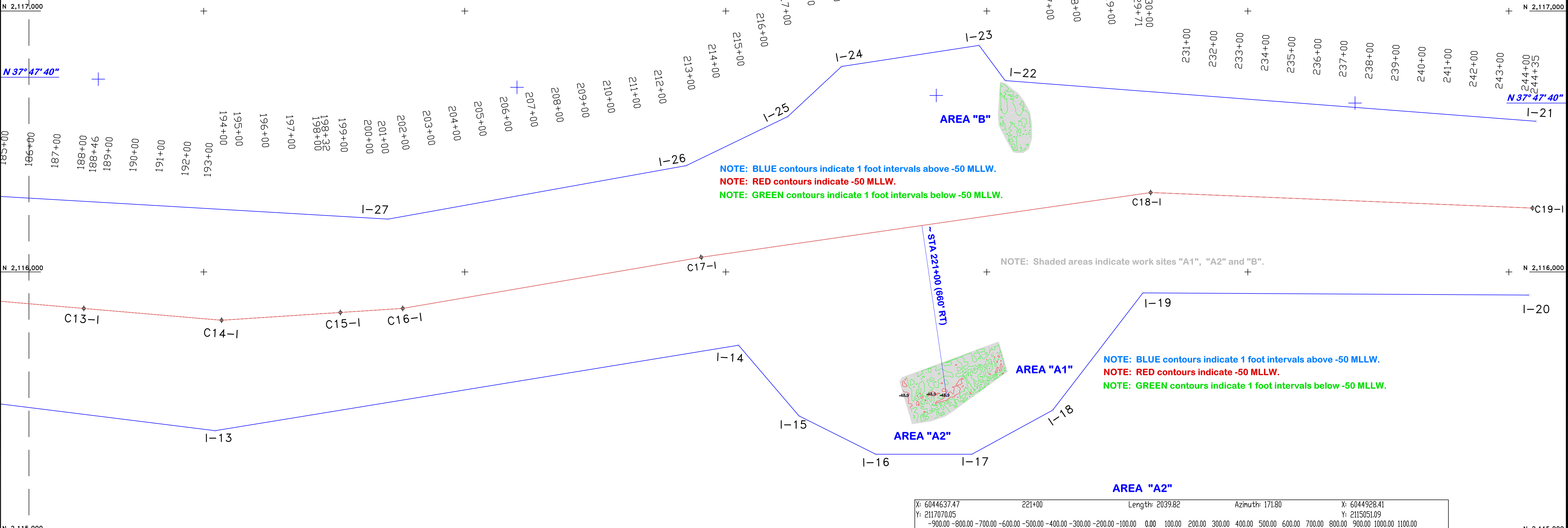


PRELIMINARY ISSUE
THIS PLAN ISSUED FOR
ADVANCE INFORMATION ONLY



MATCH LINE SHEET - 7



| Mark | Description | Date | Appr. |
|------|--|------|-------|
| | UPDATED SURVEY TO INCLUDE ADDITIONAL HIGH RESOLUTION EXAMINATIONS FOR THREE (3) SITES SHOWN HEREON | | |
| | FIELD OBSERVATION DATE: 21 APRIL 2010 | | |
| | REVISION DATE: 26 APRIL 2010 | | |

| DESIGNED BY: | CHECKED BY: | DRAWN BY: |
|--|---|---------------|
| PDT | PDT | PDT |
| DATE: 04/26/2010 | SHEET NO. 8 OF 8 | DRAWING NO. 2 |
| APPROVED: STEPHEN P. KILMONI, P.S.M., Chief of Geomatics | PREPARED UNDER THE DIRECTION OF LAURENCE M. FARRELL, LT. COLONEL, C.E., DISTRICT ENGINEER | XXX |

ALAMEDA COUNTY CALIFORNIA
**OAKLAND HARBOR
INNER HARBOR
POST-DREDGE ANOMALY**
21 APRIL 2010

Sheet reference number
C9