
 US Army Corps
 of Engineers
 San Francisco District
 1455 Market Street
 San Francisco, CA 94103

NO.	DATE	DESCRIPTION	BY	APPV.

SUBMITTED: PDT Initial Stamp Item Letter APPROVAL RECOMMENDED: APPROVED: Civil, Technical Support Section Civil, Construction Branch	DESIGNED BY: PDT CHECKED BY: PDT DATE: 12/15/2016	DRAWN BY: PDT DRAWING NO.: 4 OF 8 SHEET NO.: 2 PREPARED UNDER THE DIRECTION OF: JOHN K. MORROW LT. COLONEL, C.E., DISTRICT ENGINEER
--	---	--

CALIFORNIA
 ALAMEDA COUNTY
**OAKLAND INNER HARBOR
 POSTDRUDGE SURVEY
 REACH 9**
 12 DECEMBER 2016

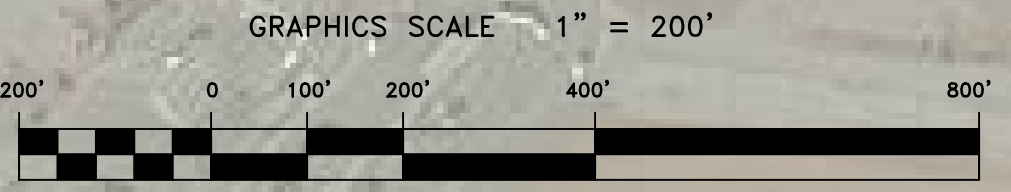
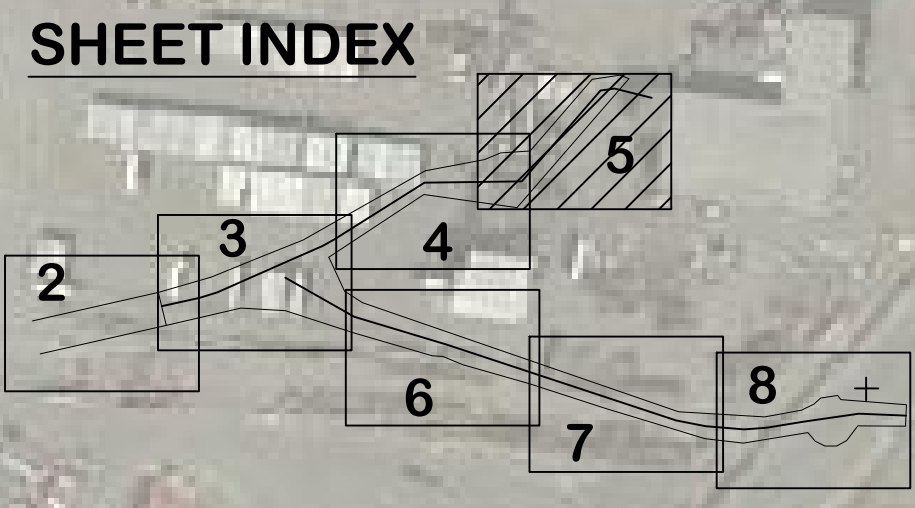
Sheet
 reference
 number
C5

M:\BRANCH_FOLDERS\CONSTRUCTION\NA\0_Survey\Admin\Survey\stb\almond\2016\F_21_CO_H_20161212_AD_R618F_21_CO_H_20161212_AD_R618F_21_CO_H_20161212_AD_R618F.dwg Dec 18, 2016 - 10:16am



Mark	Description	Date	Appr.

SUBMITTED: PDT Hydro Survey Team Leader APPROVAL RECOMMENDED:	DESIGNED BY: PDT DATE: 11/14/2016	CHECKED BY: PDT SHEET NO. 4 OF 8	DRAWN BY: PDT DRAWING NO. 2 DATE: 11/14/2016
APPROVED: CHM, Technical Support Section CHM, Construction Branch	PREPARED UNDER THE DIRECTION OF JOHN C. MORROW LT. COLONEL, C.E., DISTRICT ENGINEER		



CALIFORNIA
 ALAMEDA COUNTY
 OAKLAND HARBOR
 OUTER HARBOR
 REACH 10
 POSTDREDGE SURVEY COMPOSITE
 11 NOVEMBER 2016

Sheet reference number
C5