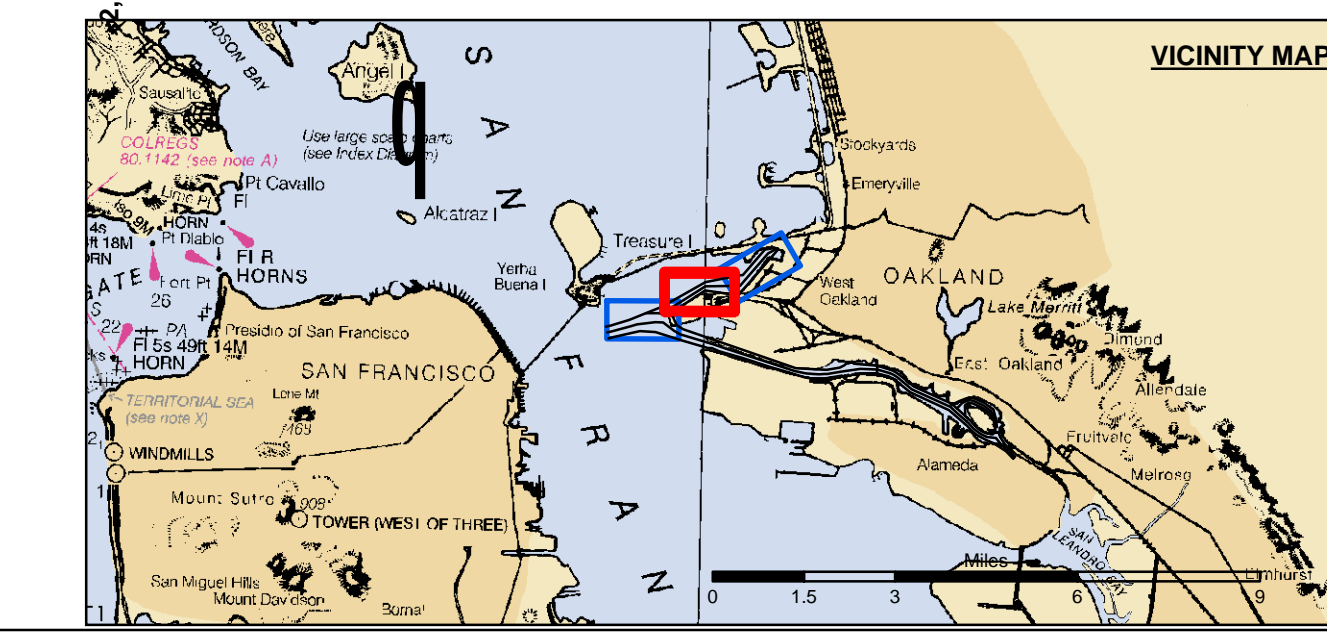


0 200 400 800 1,200
 Feet
 1 inch = 200 feet
 Relative Scale (ANSI D 22x34)
 1:2,400
 Absolute Scale
 FLOOD a
 b EBB



- Federal Navigation Channel
- Shoaling Area
- Placement Area
- Anchorage Area
- Wreck Area
- Submerged Wreck
- Angle Point
- Beacon, General
- Obstruction Point
- Navigation Buoy
- Navigation Buoy
- Shoalest Sounding*
- Contours
- 50
- 49
- 48
- 47
- 46

NOTES:
 DRAWING NOT TO BE USED FOR NAVIGATION. ONLY CHANNEL CONDITION AT DATE OF SURVEY.
 THE LOCATION OF ALL NAVIGATION AIDS ARE BASED ON INFORMATION PROVIDED BY THE U.S. COAST GUARD. BUOY LOCATIONS REPRESENT THE POSITION OF THE SINKER ONLY.
 SOUNDINGS WERE TAKEN BY FATHOMETER AND ARE SHOWN TO THE NEAREST TENTH OF A FOOT.
 SOUNDINGS ARE BASED ON THE DATUM OF MEAN LOWER LOW WATER AT THE LOCALITY. NAVD 88.
 SURVEYED BY THE CORPS OF ENGINEERS.
 BASE MAPS ARE USDA NAIP 2010.
 PLANE GRID AND COORDINATES ARE BASED ON LAMBERT PROJECTION, NAD 83, ZONE III CALIFORNIA AS DESCRIBED IN SPECIAL PUBLICATION NO. 235, PUBLISHED BY THE NATIONAL OCEAN SURVEY.
 PROJECT DEPTH OF OUTER AND INNER HARBOR IS -50 FEET.
 PROJECT DEPTH FROM INNER HARBOR TURNING BASIN TO PARK STREET BRIDGE IS 35 FEET.
 TIDAL CANAL PROJECT DEPTH IS 18 FEET.

VERTICAL CONTROL:
 PRCP: PORT 1 1836/PID HT8654.
 OAKLAND INNER, REACH 4-6 DISK SET AT SOUTH END OF CLAY STREET, AT THE PORT OF OAKLAND CLAY STREET PIER. ELEVATION: 9.56 FEET MLLW - PUBLISHED 21 APR 2003 ON NOAA STATION 941 4764 TIDE GAUGE LOCATION IS CHISEL MARK APPROX. 10 FEET WEST ON TOP OF CONCRETE CURB; CHISEL ELEVATION 11.0 FEET MLLW.
 LCP1: 941 4777 B TIDAL/PID AE5211, OAKLAND INNER REACH 1-3 DISK SET IN BALLARD FOUNDATION NEAR THE NORTHEAST END OF BERTH 40 OF THE OAKLAND MIDDLE HARBOR. ELEVATION: 13.48 FEET MLLW - DERIVED FROM WGS-84 ELLIPSOID ELEVATION, GEOID09 AND VDATUM MODELS TIDE GAUGE LOCATION IS IN FACE OF PILING AT BERTH 37; NAIL ELEVATION 9.7 FEET MLLW.
 LCP2: OAK OUTER 1 2012/NO PID, OAKLAND OUTER REACH 7-10 DISK SET IN PARKING LOT AT PIER 6 AMNAV TUG TERMINAL AT THE EDGE OF THE PIER. ELEVATION: 14.04 FEET MLLW - DERIVED FROM WGS-84 ELLIPSOID ELEVATION, GEOID09 AND DATUM MODELS TIDE GAUGE LOCATION IS IN FACE OF PILING AT PIER 6, 10' EAST OF BENCHMARK; NAIL ELEVATION 10.1 FEET MLLW.

HORIZONTAL CONTROL:
 PRIMARY: RTK POSITIONING
 SECONDARY: COAST GURAD DGPS D-BEACON

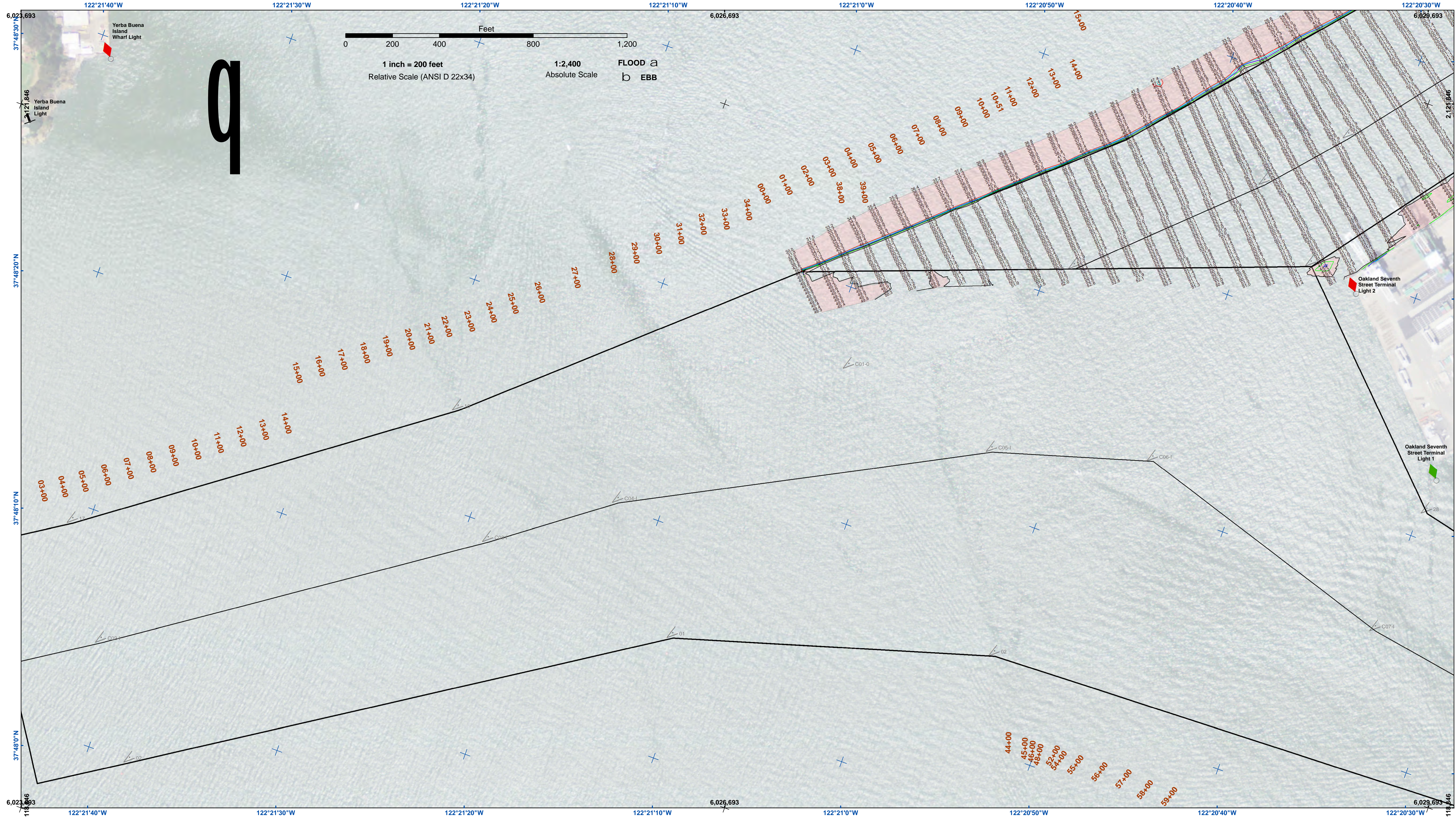
US Army Corps of Engineers
 San Francisco District
 1455 Market Street
 San Francisco, CA 94103

DISCLAIMER
 The United States Government furnishes this information as a service to the public. It is not intended to be used for any purpose other than that for which it was prepared. The United States Government makes no warranty, expressed or implied, concerning the accuracy, completeness, or timeliness of the information. The user is responsible for the results of any application of the data for other than its intended purpose. The United States Government shall not be liable for any damages, including those resulting from the use of the information, whether or not such damages were foreseeable. The United States Government shall not be liable for any damages, including those resulting from the use of the information, whether or not such damages were foreseeable. The United States Government shall not be liable for any damages, including those resulting from the use of the information, whether or not such damages were foreseeable.

Chart Date:	Sep 15, 2016
Surveyed By:	JOHN C. MORROW
Plotted By:	PDT
Checked By:	PDT
Drawn by:	PDT

ALAMEDA COUNTY
 OAKLAND HARBOR
 POSTREDGE SURVEY
 REACH 7 & 8
 10-12 SEPTEMBER 2016

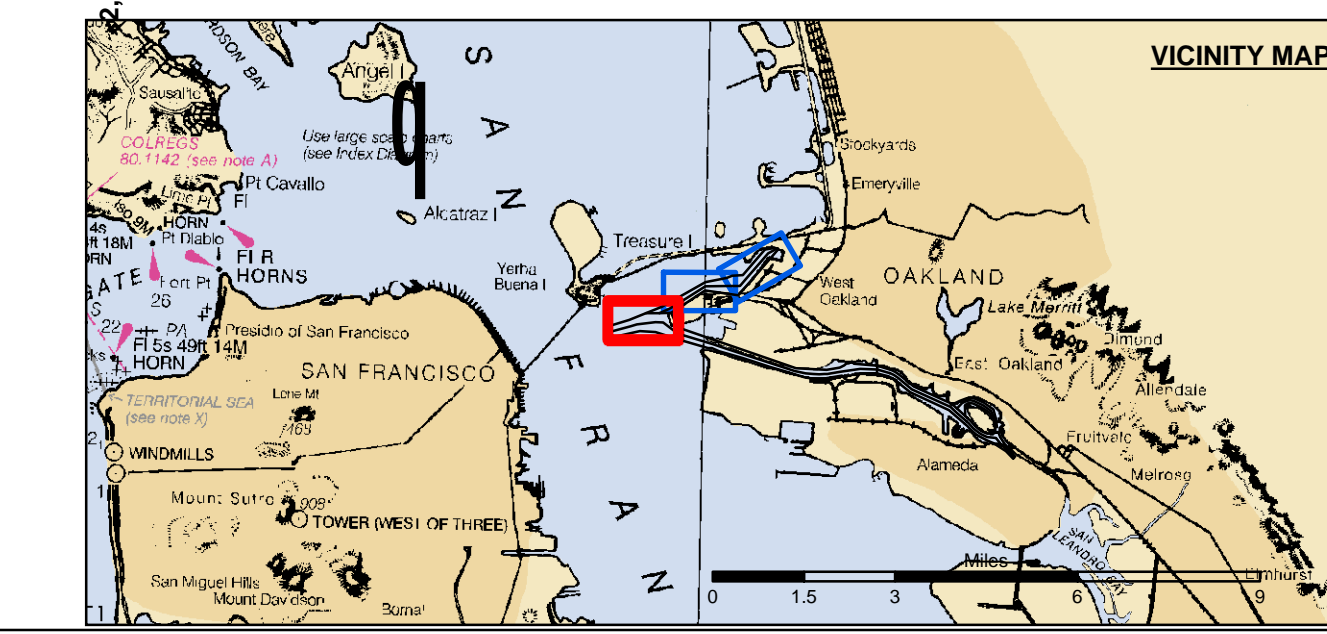
Sheet Reference Number
 2 of 3



0 200 400 800 1,200
 Feet
 1 inch = 200 feet
 Relative Scale (ANSI D 22x34)
 1:2,400
 Absolute Scale

US Army Corps of Engineers
 San Francisco District
 1455 Market Street
 San Francisco, CA 94103

DISCLAIMER
 The United States Government furnishes this information as a service to the public and does not warrant, express or implied, the accuracy, completeness, or reliability of the information. The user is responsible for the results of any application of the data for other than its intended purpose. The United States Government makes no warranty, express or implied, concerning the accuracy, completeness, or reliability of the information. The user is responsible for the results of any application of the data for other than its intended purpose. These data belong to the Government. Therefore the recipient may not transfer these data to others without also transferring this disclaimer.



- | | | |
|----------------------------|--------------------|----------|
| Federal Navigation Channel | Beacon, General | Contours |
| Shoaling Area | Obstruction Point | -50 |
| Placement Area | Navigation Buoy | -49 |
| Anchorage Area | Navigation Buoy | -48 |
| Wreck Area | Shoalest Sounding* | -47 |
| Submerged Wreck | | -46 |
| Angle Point | | |

NOTES:
 DRAWING NOT TO BE USED FOR NAVIGATION. ONLY CHANNEL CONDITION AT DATE OF SURVEY.
 THE LOCATION OF ALL NAVIGATION AIDS ARE BASED ON INFORMATION PROVIDED BY THE U.S. COAST GUARD. BUOY LOCATIONS REPRESENT THE POSITION OF THE SINKER ONLY.
 SOUNDINGS WERE TAKEN BY FATHOMETER AND ARE SHOWN TO THE NEAREST TENTH OF A FOOT.
 SOUNDINGS ARE BASED ON THE DATUM OF MEAN LOWER LOW WATER AT THE LOCALITY. NAVD 88.
 BASE MAPS ARE USDA NAIP 2010.
 SURVEYED BY THE CORPS OF ENGINEERS.
 PLANE GRID AND COORDINATES ARE BASED ON LAMBERT PROJECTION, NAD 83, ZONE III CALIFORNIA AS DESCRIBED IN SPECIAL PUBLICATION NO. 235, PUBLISHED BY THE NATIONAL OCEAN SURVEY.
 PROJECT DEPTH OF OUTER AND INNER HARBOR IS -50 FEET.
 PROJECT DEPTH FROM INNER HARBOR TURNING BASIN TO PARK STREET BRIDGE IS 35 FEET.
 TIDAL CANAL PROJECT DEPTH IS 18 FEET.

VERTICAL CONTROL:
 PRCP: PORT 1 1836/PID HT/064.
 OAKLAND INNER, REACH 4-6 DISK SET AT SOUTH END OF CLAY STREET, AT THE PORT OF OAKLAND CLAY STREET PIER. ELEVATION: 9.56 FEET MLLW - PUBLISHED 21 APR 2003 ON NOAA STATION 941 4764 TIDE GAUGE LOCATION IS CHISEL MARK APPROX. 10 FEET WEST ON TOP OF CONCRETE CURB; CHISEL ELEVATION 11.0 FEET MLLW.
 LCP1: 941 4777 B TIDAL/PID AE5211, OAKLAND INNER REACH 1-3 DISK SET IN BALLARD FOUNDATION NEAR THE NORTHEAST END OF BERTH 40 OF THE OAKLAND MIDDLE HARBOR. ELEVATION: 13.48 FEET MLLW - DERIVED FROM WGS-84 ELLIPSOID ELEVATION, GEOID09 AND VDUTUM MODELS TIDE GAUGE LOCATION IS IN FACE OF PILING AT BERTH 37; NAIL ELEVATION 9.7 FEET MLLW.
 LCP2: OAK OUTER 1 2012/NO PID, OAKLAND OUTER REACH 7-10 DISK SET IN PARKING LOT AT PIER 6 AMNAV TUG TERMINAL AT THE EDGE OF THE PIER. ELEVATION: 14.04 FEET MLLW - DERIVED FROM WGS-84 ELLIPSOID ELEVATION, GEOID09 AND DATUM MODELS TIDE GAUGE LOCATION IS IN FACE OF PILING AT BERTH 6, 10' EAST OF BENCHMARK; NAIL ELEVATION 10.1 FEET MLLW.

HORIZONTAL CONTROL:
 PRIMARY: RTK POSITIONING
 SECONDARY: COAST GURAD DGPS D-BEACON

Chart Date:	Sep 15, 2016
Designed by:	PDT
Plotted by:	PDT
Checked by:	PDT
Drawn by:	PDT

ALAMEDA COUNTY
 CALIFORNIA
OAKLAND HARBOR
 POSTREDGE SURVEY
 REACH 7 & 8
 10-12 SEPTEMBER 2016

Sheet Reference Number
 3 of 3