

US Army Corps of Engineers
 San Francisco District
 1455 Market Street
 San Francisco, CA 94103

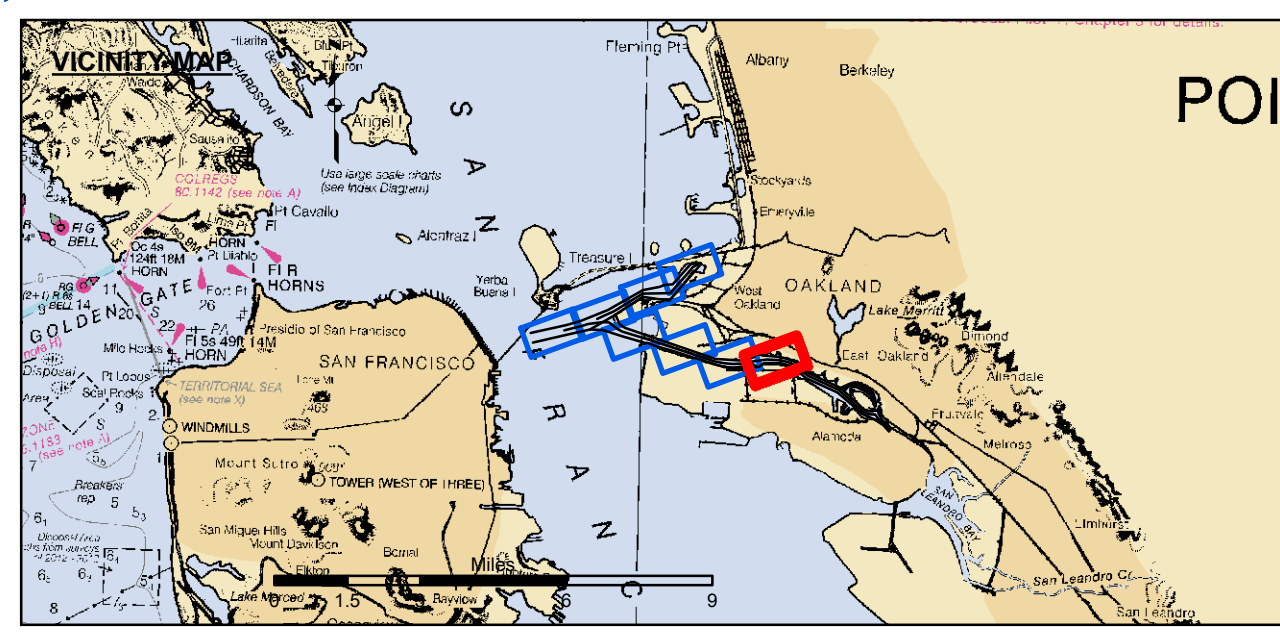
DISCLAIMER
 The United States Government furnishes this information as a service to the public. It is not intended to be used for any purpose other than that intended by the Government. The user is responsible for the results of any application of the data for other than the intended purpose. The user is responsible for the results of any application of the data for other than the intended purpose. The user is responsible for the results of any application of the data for other than the intended purpose.

Chart Date:	Jul 18, 2014
Designed by:	PDT
Plotted by:	PDT
Checked by:	PDT
Drawn by:	PDT

ALAMEDA COUNTY
OAKLAND HARBOR
 OAKLAND INNER HARBOR
 CONDITION SURVEY
 15 JULY 2014

Sheet
Number
8 of 8

PRELIMINARY ISSUE
 THIS PLAN ISSUED FOR
 ADVANCE INFORMATION ONLY



- Federal Navigation Channel
- Shoaling Area
- Placement Area
- Anchorage Area
- Wreck Area
- Submerged Wreck
- Angle Point
- Beacon, General
- Obstruction Point
- Navigation Buoy
- Navigation Buoy
- Shoalest Sounding*
- Contours**
- 50
- 49
- 48
- 47
- 46

NOTES:
 HORIZONTAL COORDINATE SYSTEM:
 NORTH AMERICAN DATUM OF 1983 (NAD83), PROJECTED TO THE STATE PLANE COORDINATE SYSTEM (SPCS), CALIFORNIA ZONE III. DISTANCE UNITS IN U.S. SURVEY FEET.

VERTICAL DATUM:
 SOUNDINGS ARE SHOWN IN FEET AND INDICATE DEPTHS BELOW MEAN LOWER LOW WATER.

THE INFORMATION DEPICTED ON THIS MAP REPRESENTS THE RESULTS OF A SURVEY CONDUCTED ON THE DATE INDICATED AND CAN ONLY BE CONSIDERED TO REPRESENT THE GENERAL CONDITION EXISTING AT THAT TIME.

SOUNDINGS WERE TAKEN BY FATHOMETER AND ARE SHOWN TO THE NEAREST TENTH OF A FOOT. SOUNDINGS ARE BASED ON THE DATUM OF MEAN LOWER LOW WATER AT THE LOCALITY.

SURVEYED BY THE CORPS OF ENGINEERS.
 BASE MAPS ARE USDA NAIP 2010.

*SHOALEST SOUNDING PER QUARTER PER REACH

DRAWING NOT TO BE USED FOR NAVIGATION. ONLY CHANNEL CONDITION AT DATE OF SURVEY. THE LOCATION OF ALL NAVIGATION AIDS ARE BASED ON INFORMATION PROVIDED BY THE U.S. COAST GUARD. BUOY LOCATIONS REPRESENT THE POSITION OF THE SINKER ONLY. THE PROJECT DEPTHS ARE AS FOLLOWS:
 OUTER AND INNER HARBOR IS -50 FEET
 INNER HARBOR TURNING BASIN TO PARK STREET BRIDGE IS -35 FEET.
 TIDAL CANAL PROJECT DEPTH IS -18 FEET.
 PLANE GRID AND COORDINATES ARE BASED ON LAMBERT PROJECTION, NAD 83, ZONE III CALIFORNIA AS DESCRIBED IN SPECIAL PUBLICATION NO. 235, PUBLISHED BY THE NATIONAL OCEAN SURVEY.

PRIMARY: RTK POSITIONING
 SECONDARY: COAST GUARD DGPS D-BEACON
 VERTICAL CONTROL:
 PCIP: PORT 1 1936/PID H10654
 OAKLAND INNER REACH 4-B DISK SET AT SOUTH END OF CLAY STREET, AT THE PORT OF OAKLAND CLAY STREET PIER. ELEVATION: 9.56 FEET MLLW - PUBLISHED 21 APR 2003 ON NOAA STATION 941 4764 TIDE GAUGE LOCATION IS CHISEL MARK APPROX. 10 FEET WEST ON TOP OF CONCRETE CURB. CHISEL ELEVATION 11.0 FEET MLLW.
 LPOIP 1 941 4777 B TIDAL PILE 5211, OAKLAND INNER REACH 1-3 DISK SET IN BALLARD FOUNDATION NEAR THE NORTHEAST END OF BERTH 40 OF THE OAKLAND MIDDLE HARBOR. ELEVATION: 13.48 FEET MLLW - DERIVED FROM WGS-84 ELLIPSOID ELEVATION, GEOID09 AND VDUTUM MODELS
 TIDE GAUGE LOCATION IS IN FACE OF PILING AT BERTH 37. NAIL ELEVATION 9.7 FEET MLLW.
 LPOIP 2 OAK OUTER 1 2012/NO PID, OAKLAND OUTER REACH 7-10 DISK SET IN PARKING LOT AT PIER 6 AMNAV TUG TERMINAL AT THE EDGE OF THE PIER. ELEVATION: 14.04 FEET MLLW - DERIVED FROM WGS-84 ELLIPSOID ELEVATION, GEOID09 AND VDUTUM MODELS TIDE GAUGE LOCATION IS IN FACE OF PILING AT PIER 6, 10' EAST OF BENCHMARK. NAIL ELEVATION 10.1 FEET MLLW.