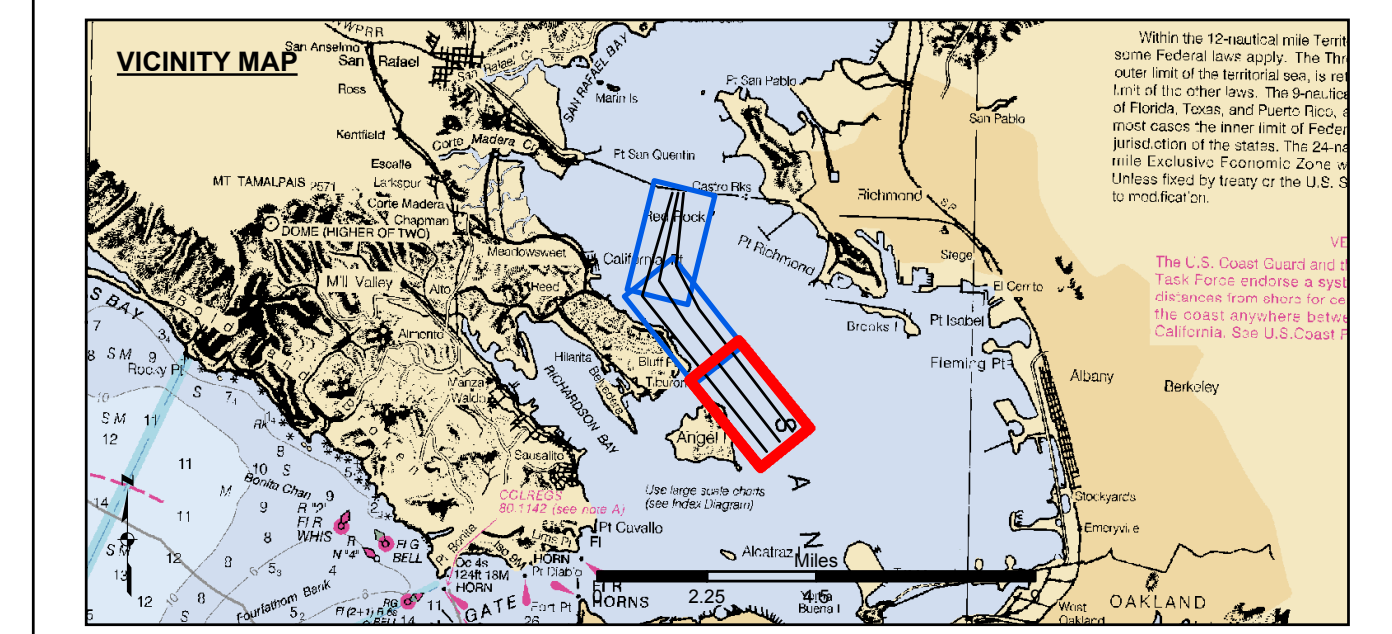


PRELIMINARY ISSUE
THIS PLAN ISSUED FOR
ADVANCE INFORMATION ONLY



- Federal Navigation Channel
- Shoaling Area
- Placement Area
- Anchorage Area
- Wreck Area
- Submerged Wreck
- Angle Point
- Beacon, General
- Obstruction Point
- Navigation Buoy
- Navigation Buoy
- Shoalest Sounding*
- Contours -45
- Contours -44
- Contours -43
- Contours -42
- Contours -41

NOTES:
HORIZONTAL COORDINATE SYSTEM:
NORTH AMERICAN DATUM OF 1983 (NAD83), PROJECTED TO THE STATE PLANE COORDINATE SYSTEM (SPCS), CALIFORNIA ZONE III. DISTANCE UNITS IN U.S. SURVEY FEET.
VERTICAL DATUM:
SOUNDINGS ARE SHOWN IN FEET AND INDICATE DEPTHS BELOW MEAN LOWER LOW WATER.
THE INFORMATION DEPICTED ON THIS MAP REPRESENTS THE RESULTS OF A SURVEY CONDUCTED ON THE DATE INDICATED AND CAN ONLY BE CONSIDERED TO REPRESENT THE GENERAL CONDITION EXISTING AT THAT TIME.
BASE MAPS ARE USDA NAIP 2010.
*SHOALEST SOUNDING PER QUARTER PER REACH

DRAWING NOT TO BE USED FOR NAVIGATION. ONLY CHANNEL CONDITION AT DATE OF SURVEY.
THE LOCATION OF ALL NAVIGATION AIDS ARE BASED ON INFORMATION PROVIDED BY THE U.S. COAST GUARD. BUOY LOCATIONS REPRESENT THE POSITION OF THE SINKER ONLY.
SURVEYED BY THE CORPS OF ENGINEERS.
THE PROJECT DEPTH IS -45 FEET AT MLW.
PLANE GRID AND COORDINATES ARE BASED ON LAMBERT PROJECTION, NAD 83, ZONE III CALIFORNIA AS DESCRIBED IN SPECIAL PUBLICATION NO. 235, PUBLISHED BY THE NATIONAL OCEAN SURVEY.
SOUNDINGS ARE BASED ON THE TIDE GAUGE LOCATED AT TIBERON NET DEPOT.
HORIZONTAL CONTROL:
COAST GUARD D-BEACON
VERTICAL CONTROL:
BENCHMARK "10" (1937) ELEV. 15.86 FT. MLLW.
BENCHMARK "11" (1948) ELEV. 15.47 FT. MLLW.

US Army Corps of Engineers
San Francisco District
1455 Market Street
San Francisco, CA 94103

DISCLAIMER: The United States Government furnishes this information as it is received and does not express any opinion or endorsement of the accuracy, completeness, or reliability of the information for any purpose other than that for which it was provided. The user is responsible for the accuracy of the information and for the consequences of any use of the information. The user is responsible for the accuracy of the information and for the consequences of any use of the information. The user is responsible for the accuracy of the information and for the consequences of any use of the information.

Prepared Under the Direction of	Chart Date	Sept 22, 2014
LT COLONEL C.E. MORROW	Designed by:	
Hydro Survey Team Leader	Plotted by:	PDT
Chief Hydro Survey Section	Checked by:	PDT
Approved:	Drawn by:	PDT

CALIFORNIA
CONTRA COSTA COUNTY
NORTH SHIP CHANNEL
CONDITION SURVEY
16-20 SEPTEMBER 2014
Sheet
Reference
Number
3 of 3