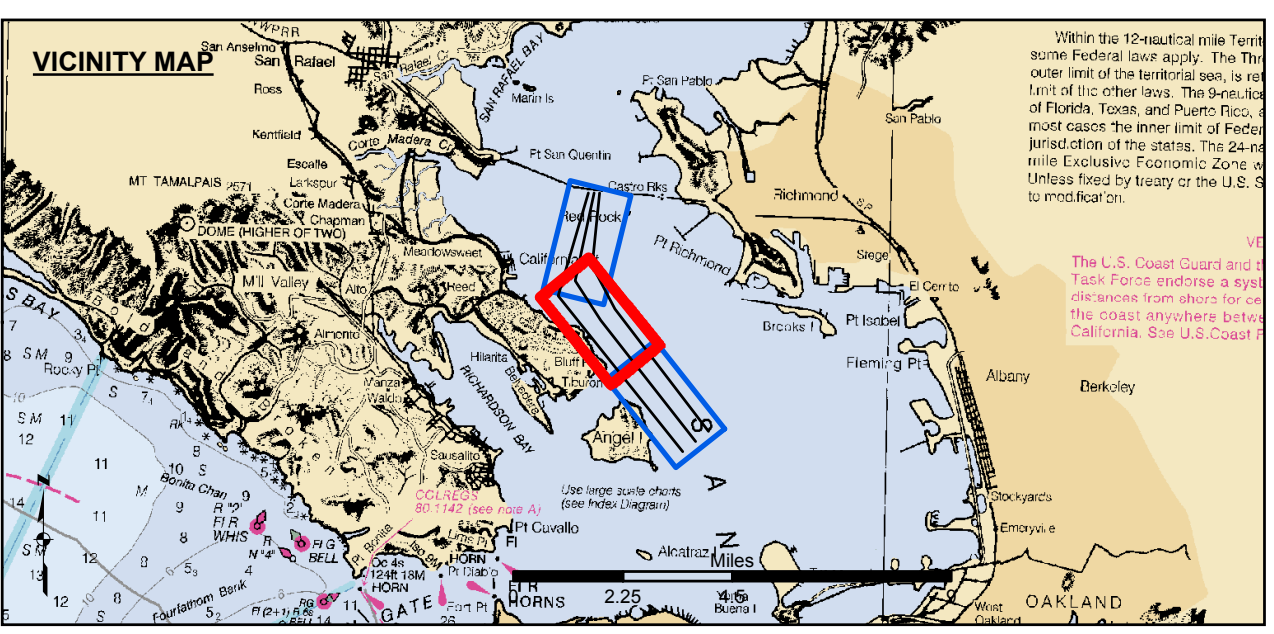


PRELIMINARY ISSUE
THIS PLAN ISSUED FOR
ADVANCE INFORMATION ONLY



- Federal Navigation Channel
- Shoaling Area
- Placement Area
- - - Anchorage Area
- ▨ Wreck Area
- ↖ Submerged Wreck
- ∠ Angle Point
- ⊥ Beacon, General
- ⊗ Obstruction Point
- ◆ Navigation Buoy
- ♦ Navigation Buoy
- Shoalest Sounding*
- Contours
- -45
- -44
- -43
- -42
- -41

NOTES:
HORIZONTAL COORDINATE SYSTEM:
NORTH AMERICAN DATUM OF 1983 (NAD83), PROJECTED TO THE STATE PLANE COORDINATE SYSTEM (SPCS), CALIFORNIA ZONE III. DISTANCE UNITS IN U.S. FEET.
VERTICAL DATUM:
SOUNDINGS ARE SHOWN IN FEET AND INDICATE DEPTHS BELOW MEAN LOWER LOW WATER.
THE INFORMATION DEPICTED ON THIS MAP REPRESENTS THE RESULTS OF A SURVEY CONDUCTED ON THE DATE INDICATED AND CAN ONLY BE CONSIDERED TO REPRESENT THE GENERAL CONDITION EXISTING AT THAT TIME.
BASE MAPS ARE USDA NAIP 2010.
*SHOALEST SOUNDING PER QUARTER PER REACH

DRAWING NOT TO BE USED FOR NAVIGATION. ONLY CHANNEL CONDITION AT DATE OF SURVEY. THE LOCATION OF ALL NAVIGATION AIDS ARE BASED ON INFORMATION PROVIDED BY THE U.S. COAST GUARD. BUOY LOCATIONS REPRESENT THE POSITION OF THE SINKER ONLY.
SURVEYED BY THE CORPS OF ENGINEERS.
THE PROJECT DEPTH IS -45 FEET AT MLLW.
SOUNDINGS ARE BASED ON THE TIDE GAUGE LOCATED AT TIBERON NET DEPOT.
HORIZONTAL CONTROL:
COAST GUARD D-BEACON
VERTICAL CONTROL:
BENCHMARK "10" (1937) ELEV. 15.86 FT. MLLW.
BENCHMARK "11" (1946) ELEV. 15.47 FT. MLLW.

US Army Corps of Engineers
San Francisco District
1455 Market Street
San Francisco, CA 94103

DISCLAIMER
The United States Government furnishes this information as a service to the public and does not warrant, express or implied, the accuracy, completeness, or reliability of the data. The user is responsible for the results of any application of the data for other than the intended purpose. These data belong to the Government. Therefore, the recipient may not transfer these data to others without also transferring this disclaimer.

Prepared Under the Direction of	Chart Date
LT COLONEL C.E. MORROW	Sept 22, 2014
Surveyed By	Designed by
PDT	PDT
Flatted By	Checked By
PDT	PDT
Recommended	Drawn by
Chief Hydro Survey Section	PDT
Approved	Chief, Construction Branch

CALIFORNIA
CONTRA COSTA COUNTY
NORTH SHIP CHANNEL
CONDITION SURVEY
16-20 SEPTEMBER 2014

Sheet Reference Number
2 of 3