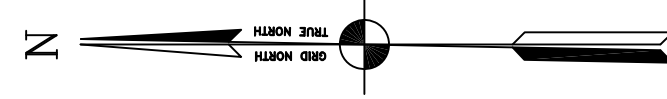


PRELIMINARY ISSUE
THIS PLAN ISSUED FOR
ADVANCE INFORMATION ONLY



MATCHLINE - SHEET 24

MATCHLINE - SHEET 22

6,047,000

6,047,000

B

A

6,046,000

6,046,000

C

2,247,000

2,246,000

2,245,000

2,247,000

2,246,000

2,245,000

646+00

647+00

648+00

649+00

650+00

651+00

652+00

653+00

654+00

655+00

656+00

657+00

658+00

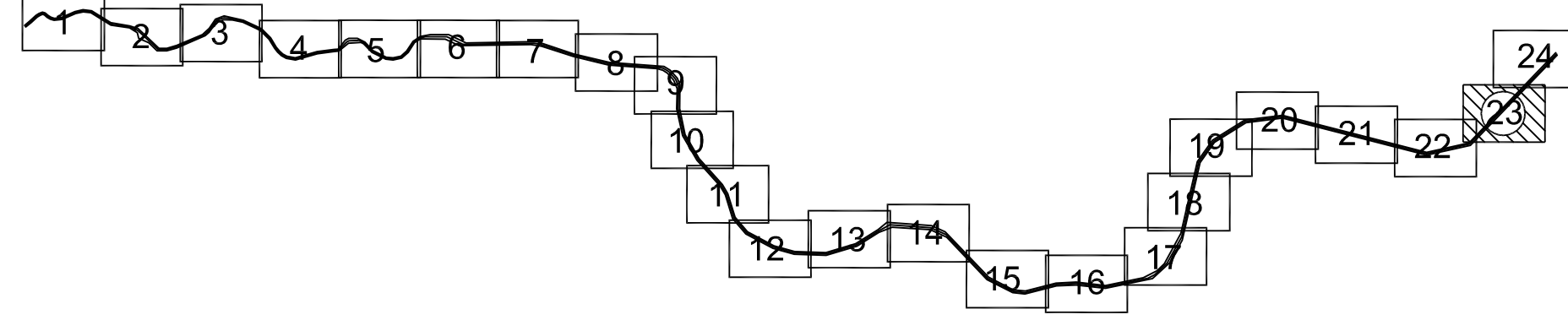
659+00

660+00

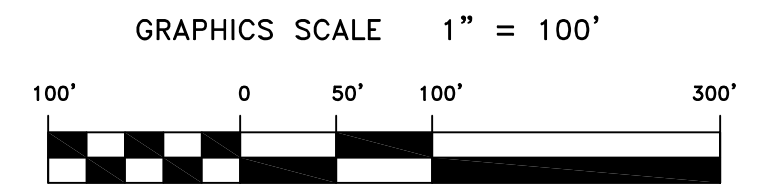
661+00

662+00

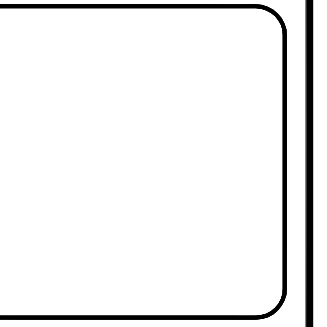
663+00



SHEET INDEX



US Army Corps
of Engineers
San Francisco District
1455 Market Street
San Francisco, CA 94103



Mark	Description	Date	Appr.

SUBMITTED:	MC	DESIGNED BY:	TJV	CHECKED BY:	EWC	DRAWN BY:	EWC
	Harris Survey Team Leader		APPROVAL RECOMMENDED:		SHEET NO.		23
DATE:				6/13/2008			
APPROVED:				PREPARED UNDER THE DIRECTION OF			
Chief, Technical Support Section				CRAIG W. KILEY			
Chief, Construction Branch				LT. COLONEL, C.E., DISTRICT ENGINEER			

NAPA COUNTY
CALIFORNIA
NAPA RIVER
CONDITION SURVEY
06, 9-11 JUNE 2008

Sheet reference number
C23