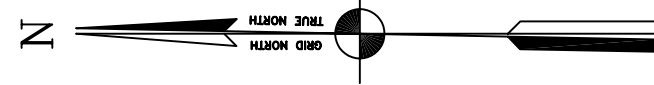
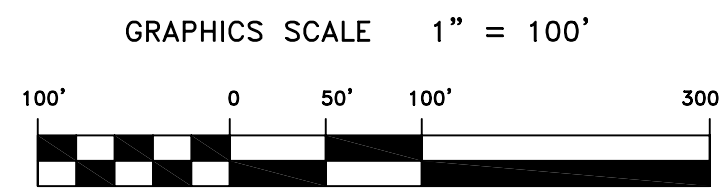
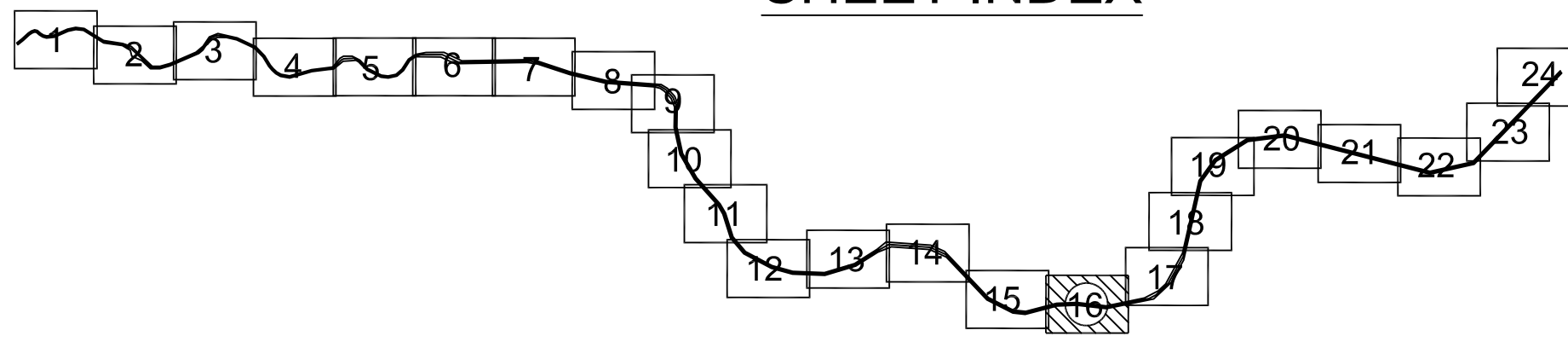


PRELIMINARY ISSUE
THIS PLAN ISSUED FOR
ADVANCE INFORMATION ONLY



SHEET INDEX



US Army Corps
of Engineers
San Francisco District
333 Market Street
San Francisco, CA 94105

Mark	Description	Date	Appr.

SUBMITTED:	PDT	DESIGNED BY:	PDT	CHECKED BY:	HSS	DRAWN BY:	HSS	
Hydro Survey Section		DATE:	9/3/2004	SHEET NO.:	16 OF 24	DRAWING NO.:	2 161	
APPROVAL RECOMMENDED:		PREPARED UNDER THE DIRECTION OF					PHILIP T. FEIR	
Chief, Engineering Branch		LT. COLONEL, C.E., DISTRICT ENGINEER						
APPROVED:								

CALIFORNIA
NAPA COUNTY
NAPA RIVER
CONDITION SURVEY
9-25 JUNE 2004

Sheet reference number
C16