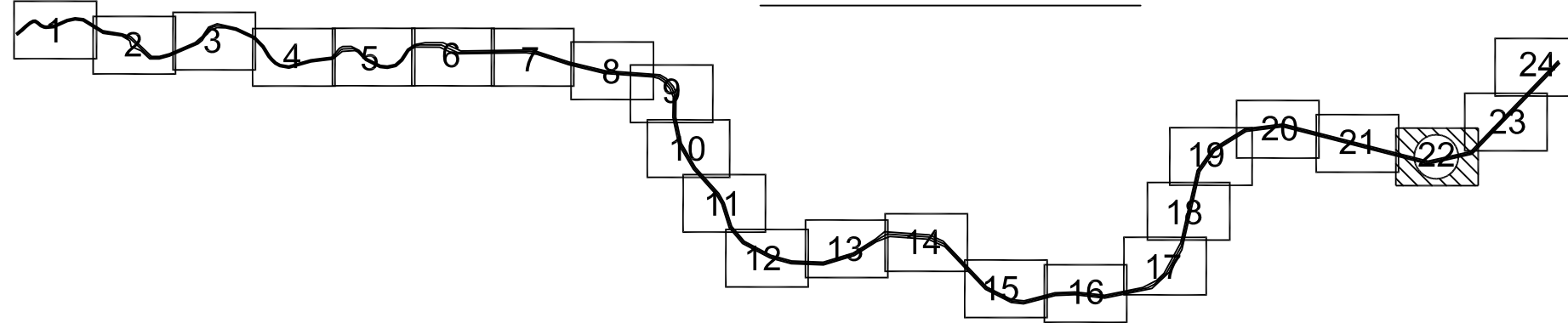
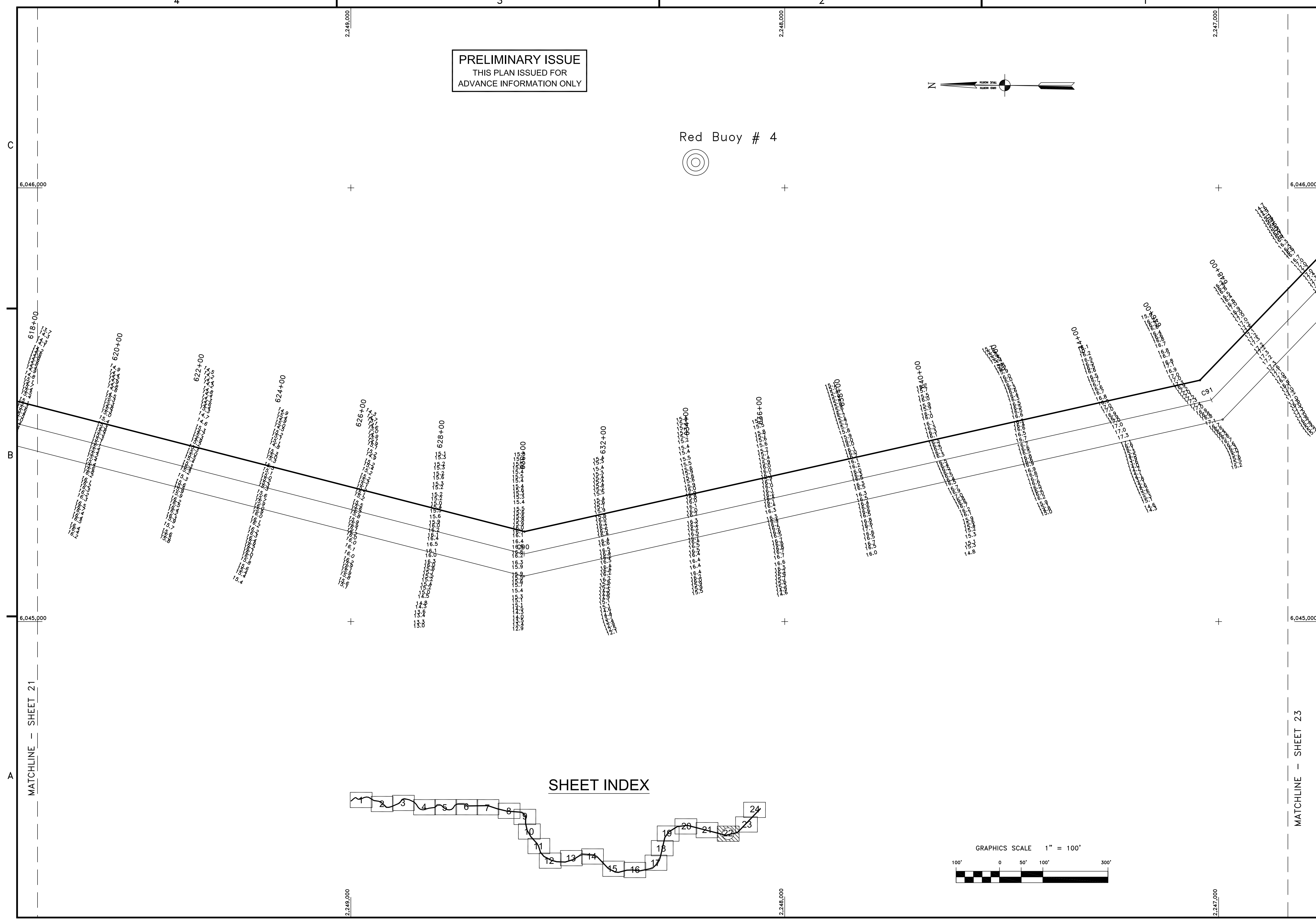
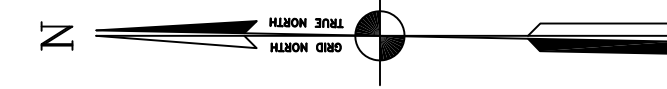
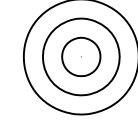
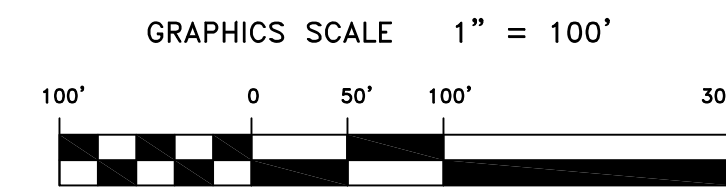


PRELIMINARY ISSUE
THIS PLAN ISSUED FOR
ADVANCE INFORMATION ONLY

Red Buoy # 4



SHEET INDEX



US Army Corps
of Engineers
San Francisco District
1455 Market Street
San Francisco, CA 94103

Mark	Description	Date	Appr.

SUBMITTED: Hydro Survey Team Leader	DESIGNED BY:	DRAWN BY:
	PDT	PDT
	DATE: 02/23/2010	DATE: 02/24/10
APPROVAL RECOMMENDED:	SHEET NO. 22 OF 24	DRAWING NO. 50 2
Chief, Technical Support Section	PREPARED UNDER THE DIRECTION OF	
APPROVED:	LAURENCE M. FARRELL	
Chief, Construction Branch	LT. COLONEL, C.E., DISTRICT ENGINEER	

NAPA COUNTY
CALIFORNIA
NAPA RIVER
CONDITION SURVEY
26-28 JANUARY 2010
AND
10 FEBRUARY 2010

Sheet
reference
number
C22