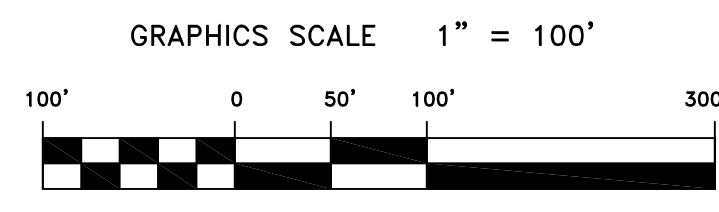
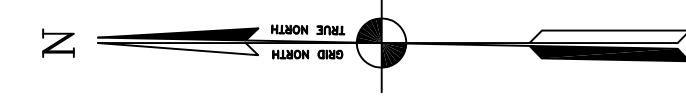
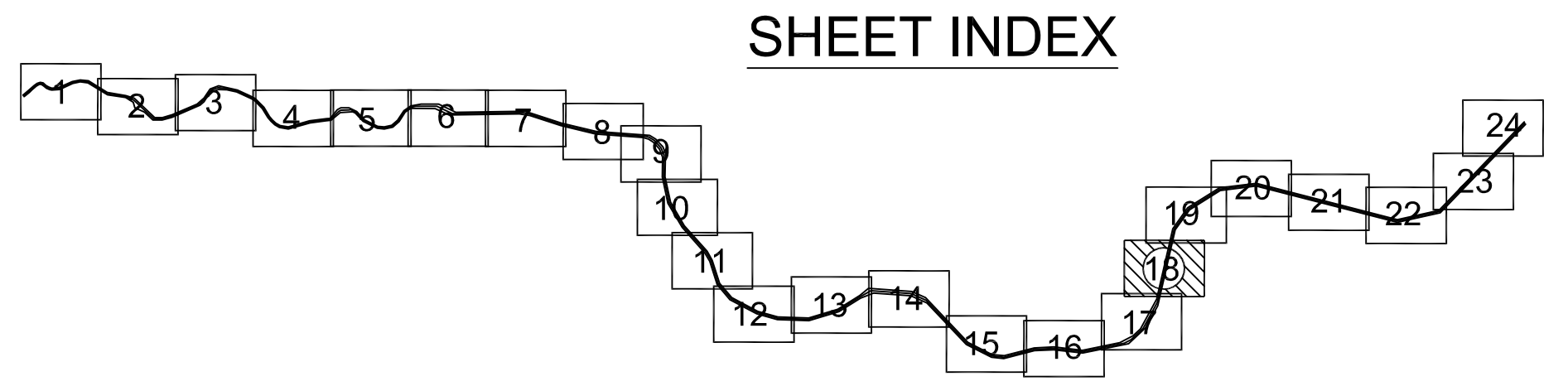
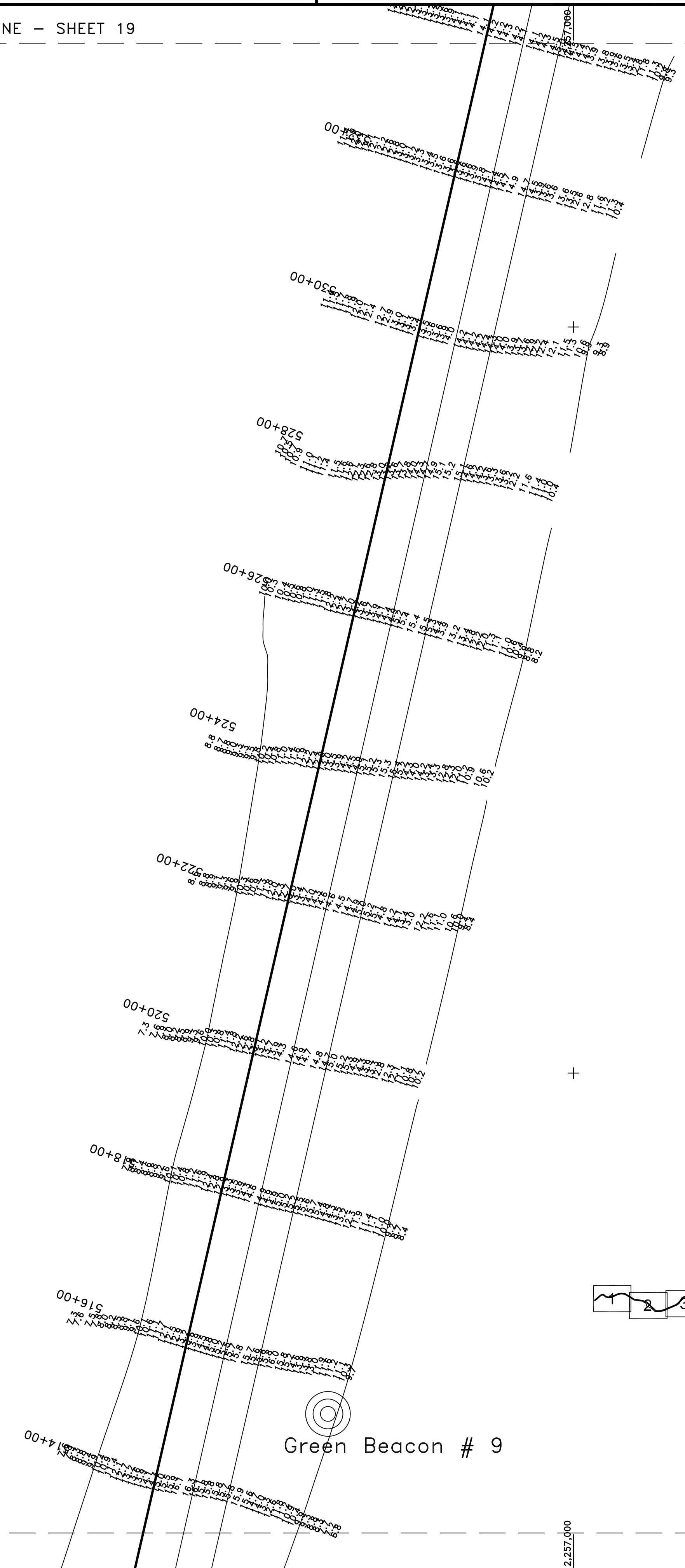


PRELIMINARY ISSUE  
THIS PLAN ISSUED FOR  
ADVANCE INFORMATION ONLY



MATCHLINE - SHEET 19

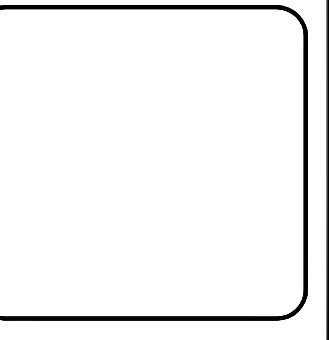
MATCHLINE - SHEET 17



SHEET INDEX



US Army Corps  
of Engineers  
San Francisco District  
1455 Market Street  
San Francisco, CA 94103



Mark	Description	Date	Appr.

SUBMITTED:	MC	CHECKED BY:	TVW	DRAWN BY:	EWC
	Hydro Survey Team Leader		DRAWING NO.		2
APPROVAL RECOMMENDED:	CHIEF, Technical Support Section	DATE:	PREPARED UNDER THE DIRECTION OF		
			6/13/2008	18 OF 24	50
APPROVED:			CRAIG W. KILEY LT. COLONEL, C.E., DISTRICT ENGINEER		
	Chief, Construction Branch				

CALIFORNIA  
NAPA COUNTY  
NAPA RIVER  
CONDITION SURVEY  
06, 9-11 JUNE 2008

Sheet reference number  
C18